



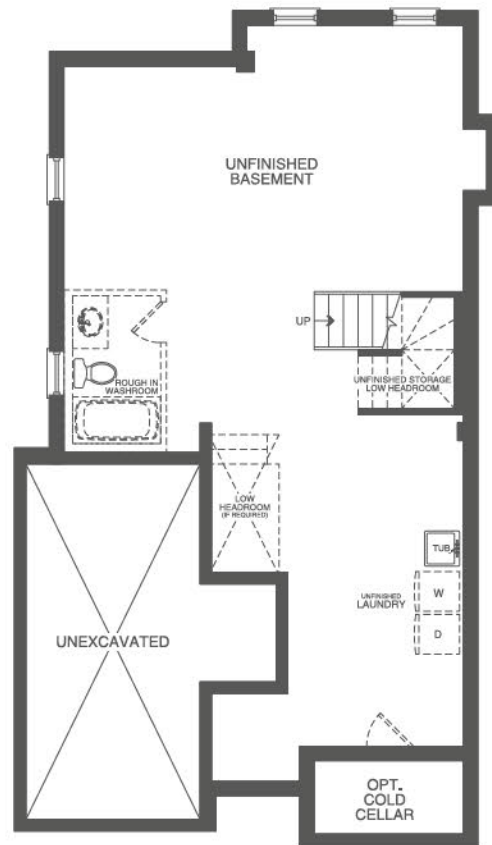
Elevation A 1,870 sq.ft.



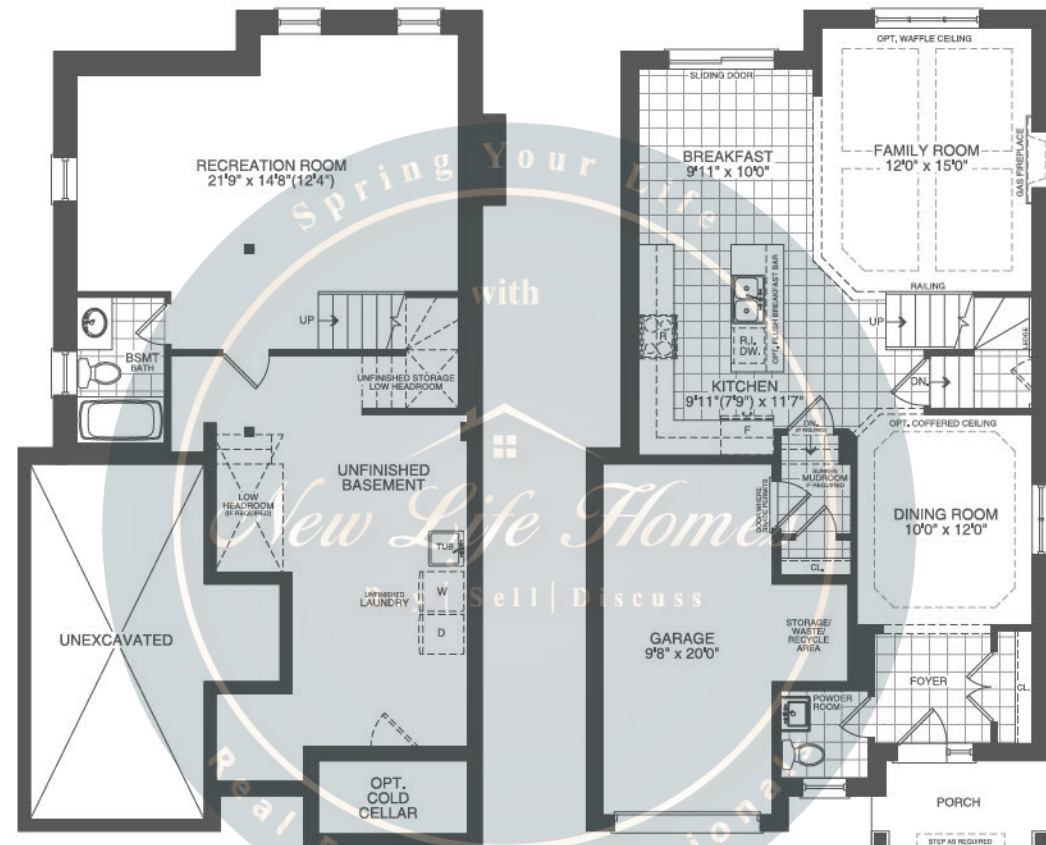
Elevation C 1,870 sq.ft.



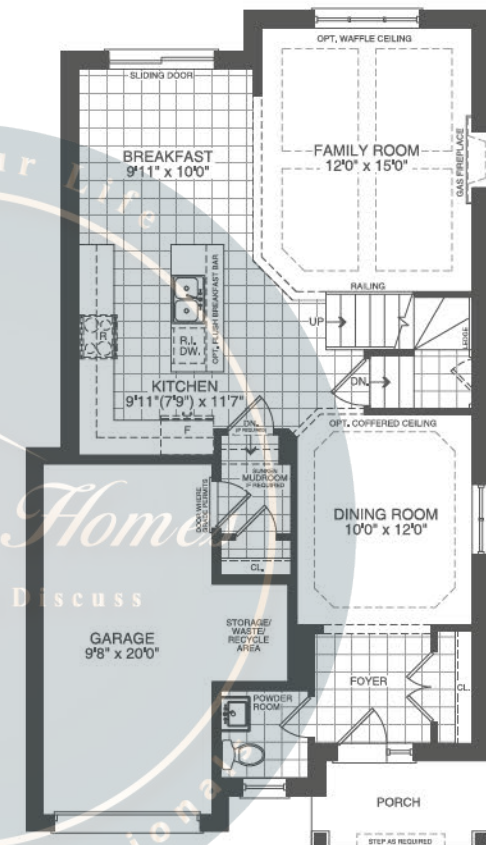
The floor plans, elevations, dimensions, specifications and architectural detailing shown are pre-construction plans only and may be changed or revised without notice including As may be necessitated by architectural controls and the construction process. All dimensions are approximate. Actual usable floor space may vary from the stated area. House may be reversed. Steps may vary at any exterior entrance. Illustrations are artist's concept only. Exterior railings to be installed only as required by grade notwithstanding any illustrations or plans. E. & O.E. NOV 15 2023



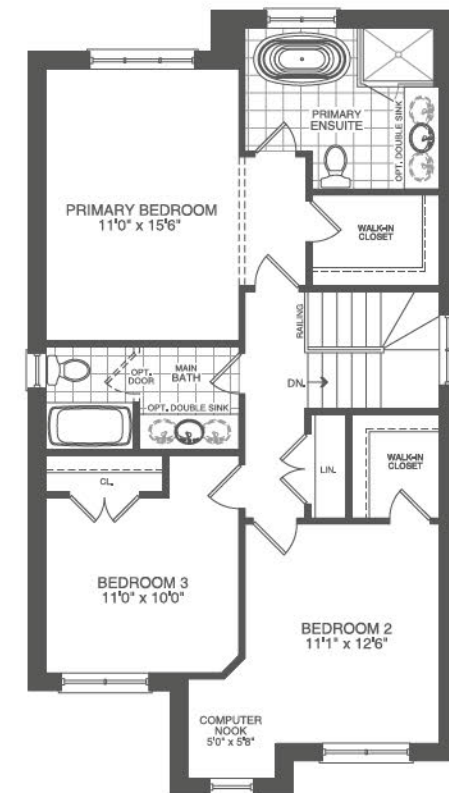
UNFINISHED BASEMENT
ELEV. A/C
1870 sf



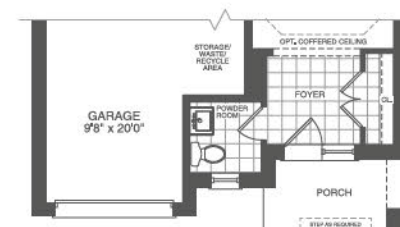
FINISHED BASEMENT
ELEV. A/C
2340 sf



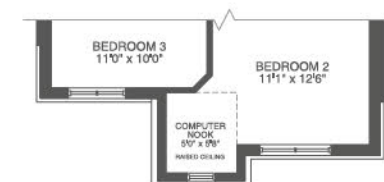
GROUND FLOOR
ELEV. A
1870 sf



SECOND FLOOR
ELEV. A
1870 sf



GROUND FLOOR
ELEV. C
1870 sf



SECOND FLOOR
ELEV. C
1870 sf





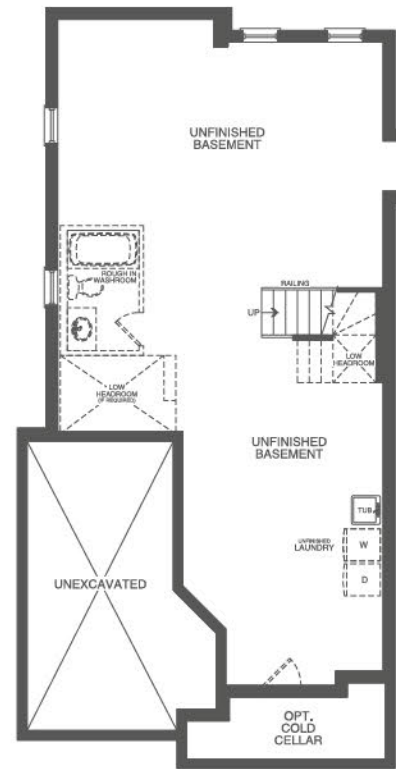
Elevation A 2,080 sq.ft.



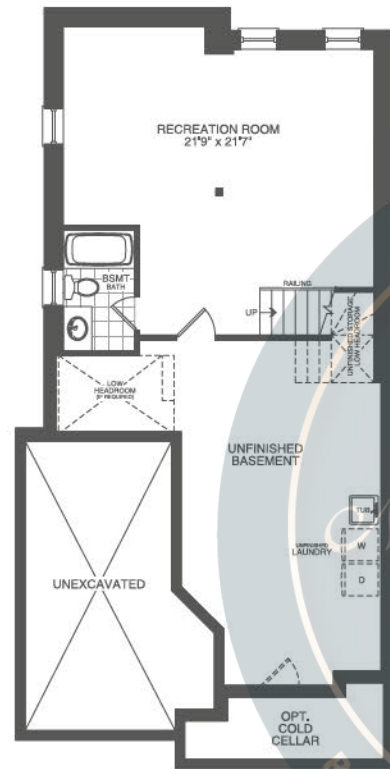
Elevation C 2,075 sq.ft.



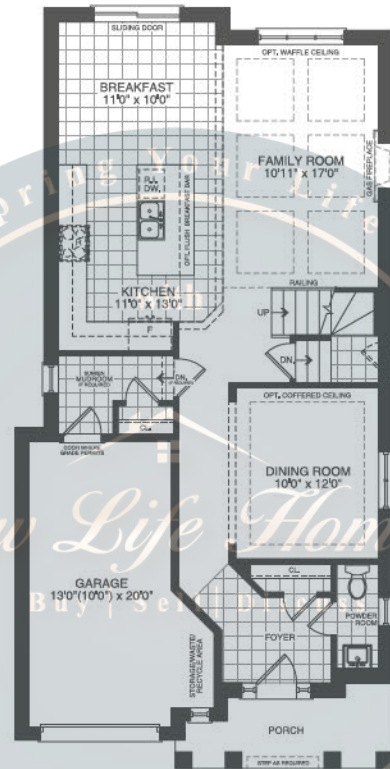
The floor plans, elevations, dimensions, specifications and architectural detailing shown are pre-construction plans only and may be changed or revised without notice including As may be necessitated by architectural controls and the construction process. All dimensions are approximate. Actual usable floor space may vary from the stated area. House may be reversed. Steps may vary at any exterior entrance. Illustrations are artist's concept only. Exterior railings to be installed only as required by grade notwithstanding any illustrations or plans. E. & O.E. NOV 15 2023



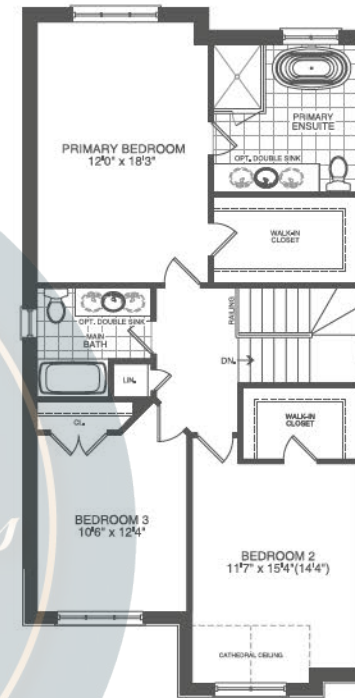
UNFINISHED BASEMENT
ELEV. A
2080 sf



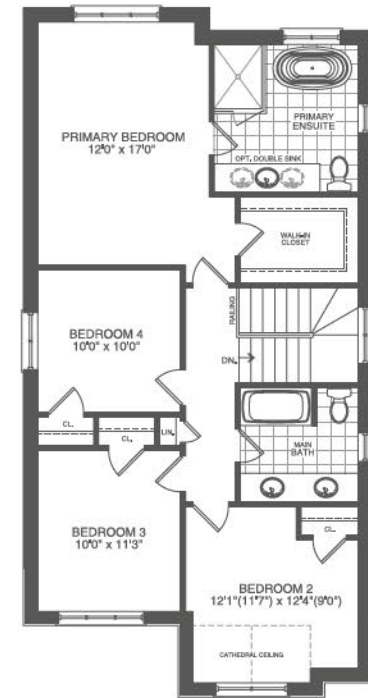
FINISHED BASEMENT
ELEV. A
2610 sf



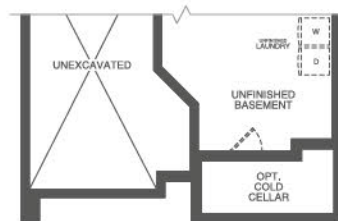
GROUND FLOOR
ELEV. A
2080 sf



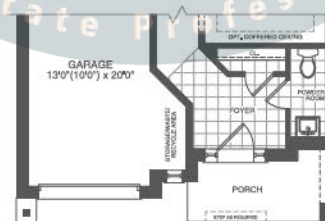
SECOND FLOOR
3 BEDROOM
ELEV. A
2080 sf



ALT. SECOND FLOOR
4 BEDROOM
ELEV. A
2080 sf



UNFINISHED BASEMENT/
FINISHED BASEMENT
ELEV. C
2075/2605 sf



GROUND FLOOR
ELEV. C
2075 sf



SECOND FLOOR
3 BEDROOM
ELEV. C
2075 sf



ALT. SECOND FLOOR
4 BEDROOM
ELEV. C
2075 sf





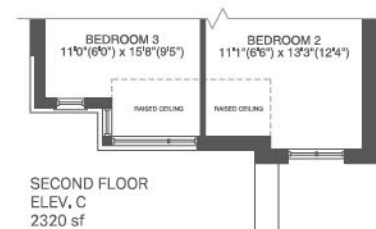
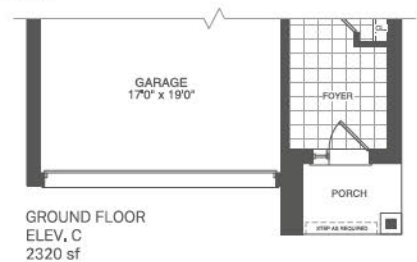
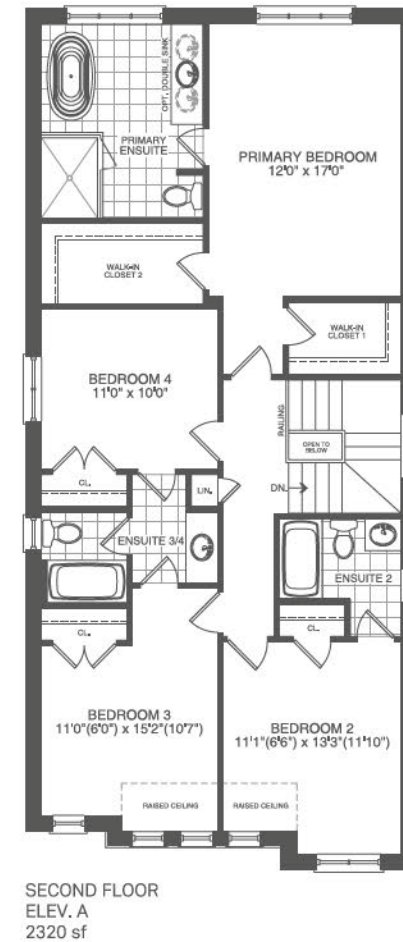
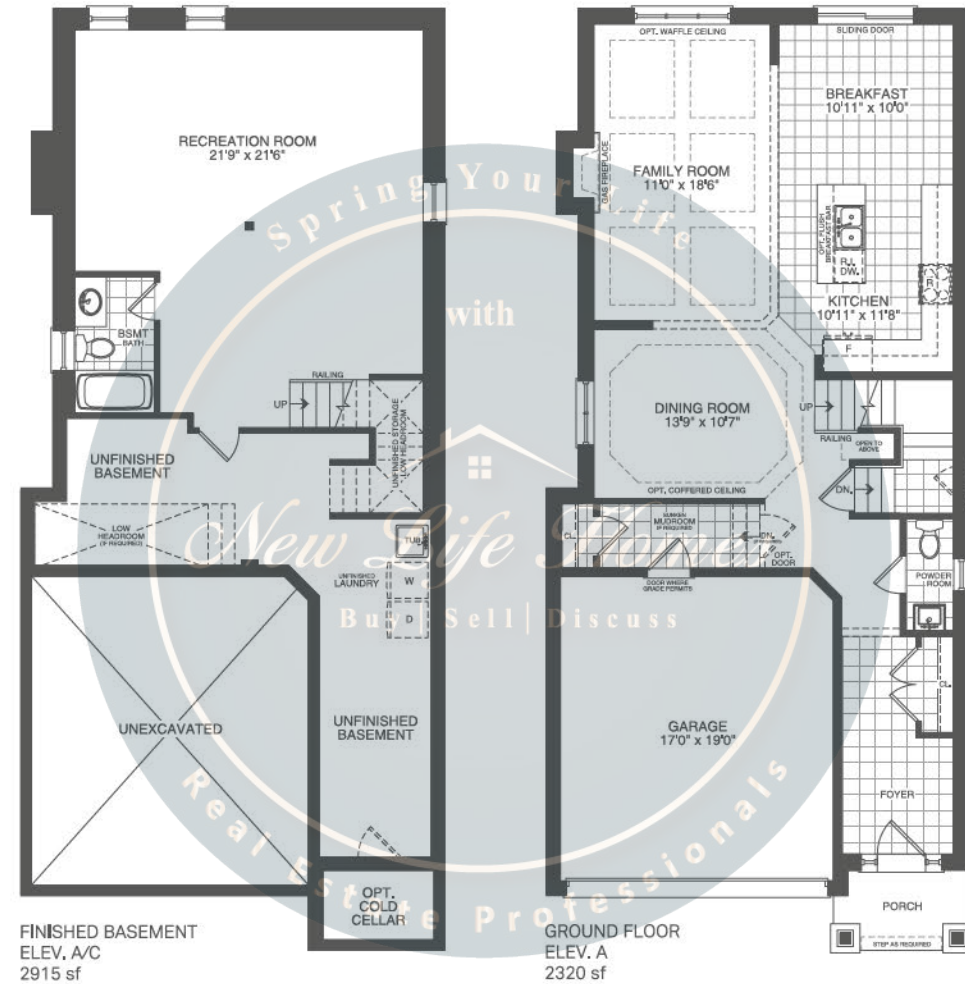
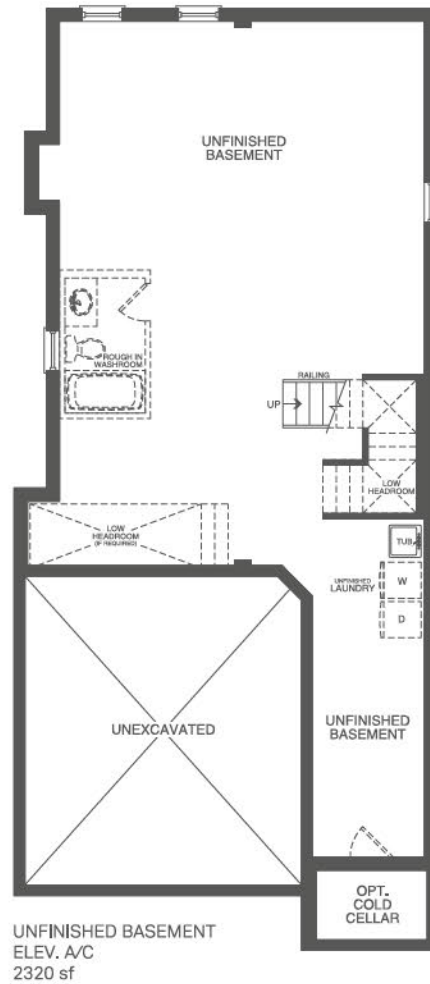
Elevation A 2,320 sq.ft.



Elevation C 2,320 sq.ft.



The floor plans, elevations, dimensions, specifications and architectural detailing shown are pre-construction plans only and may be changed or revised without notice including As may be necessitated by architectural controls and the construction process. All dimensions are approximate. Actual usable floor space may vary from the stated area. House may be reversed. Steps may vary at any exterior entrance. Illustrations are artist's concept only. Exterior railings to be installed only as required by grade notwithstanding any illustrations or plans. E.& O.E. NOV 15 2023



The floor plans, elevations, dimensions, specifications and architectural detailing shown are pre-construction plans only and may be changed or revised without notice including As may be necessitated by architectural controls and the construction process. All dimensions are approximate. Actual usable floor space may vary from the stated area. House may be reversed. Steps may vary at any exterior entrance. Illustrations are artist's concept only. Exterior railings to be installed only as required by grade notwithstanding any illustrations or plans. E.&O.E. NOV 15 2023



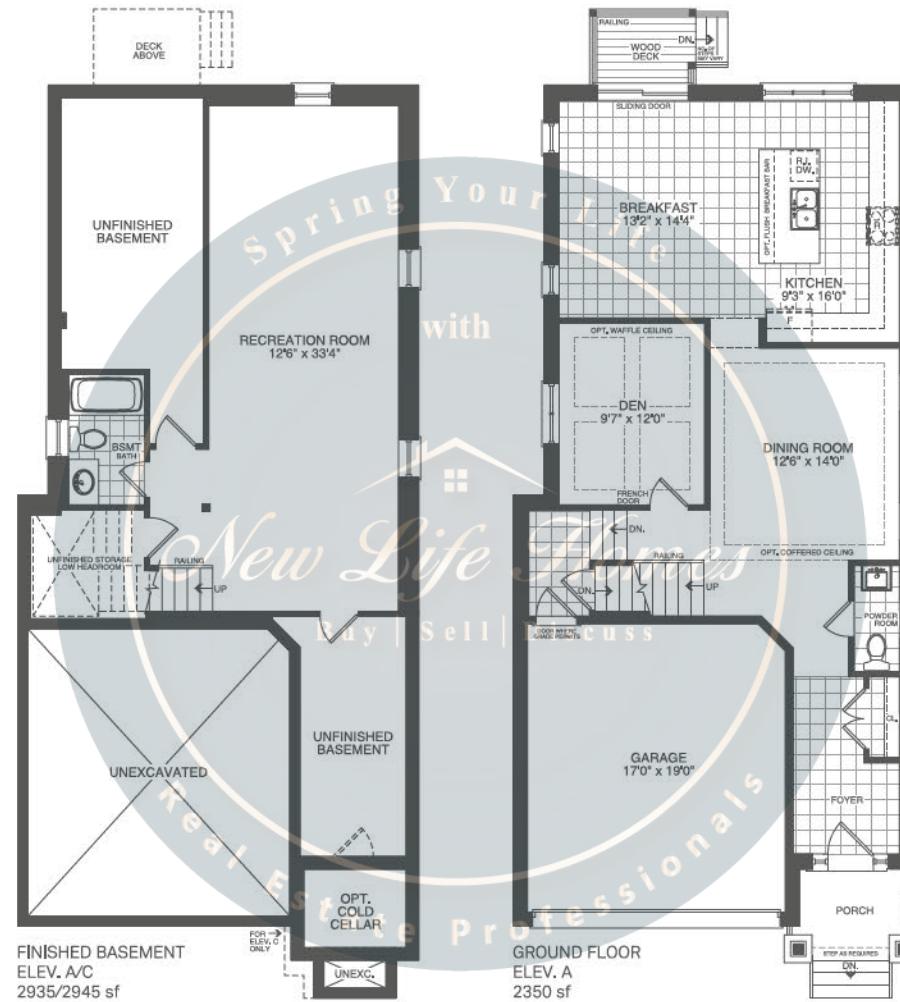
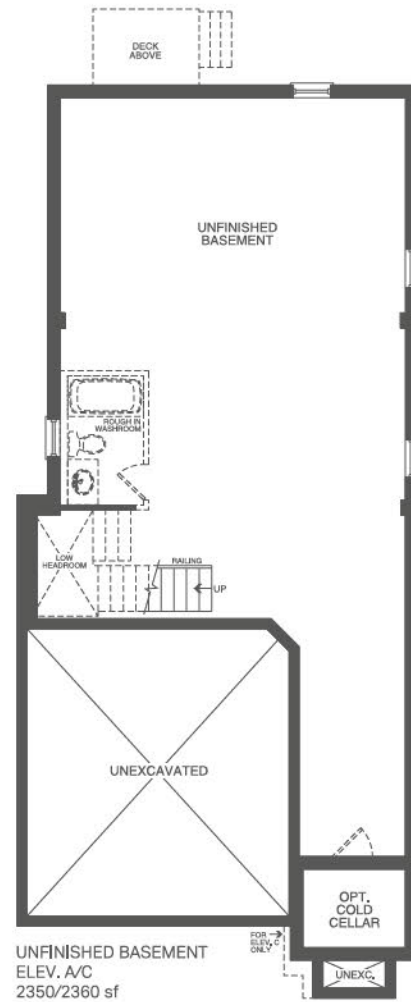
Elevation A 2,350 sq.ft.



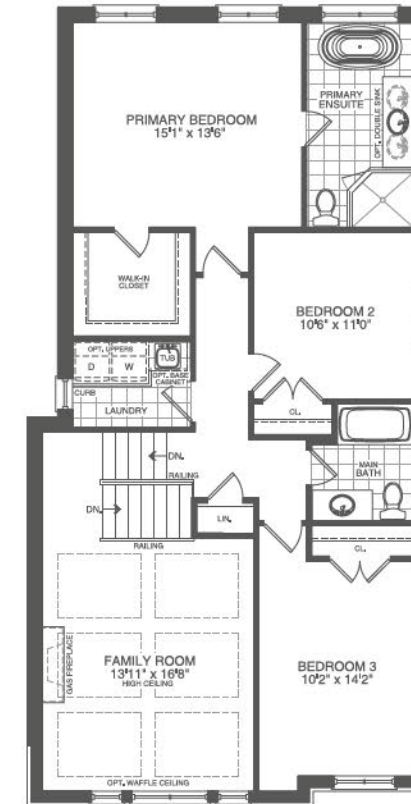
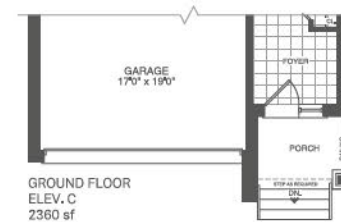
Elevation C 2,360 sq.ft.



The floor plans, elevations, dimensions, specifications and architectural detailing shown are pre-construction plans only and may be changed or revised without notice including As may be necessitated by architectural controls and the construction process. All dimensions are approximate. Actual usable floor space may vary from the stated area. House may be reversed. Steps may vary at any exterior entrance. Illustrations are artist's concept only. Exterior railings to be installed only as required by grade notwithstanding any illustrations or plans. E.& O.E. NOV 15 2023



GROUND FLOOR
ELEV. A
2350 sf



The floor plans, elevations, dimensions, specifications and architectural detailing shown are pre-construction plans only and may be changed or revised without notice including As may be necessitated by architectural controls and the construction process. All dimensions are approximate. Actual usable floor space may vary from the stated area. House may be reversed. Steps may vary at any exterior entrance. Illustrations are artist's concept only. Exterior railings to be installed only as required by grade notwithstanding any illustrations or plans. E.& O.E. NOV 15 2023



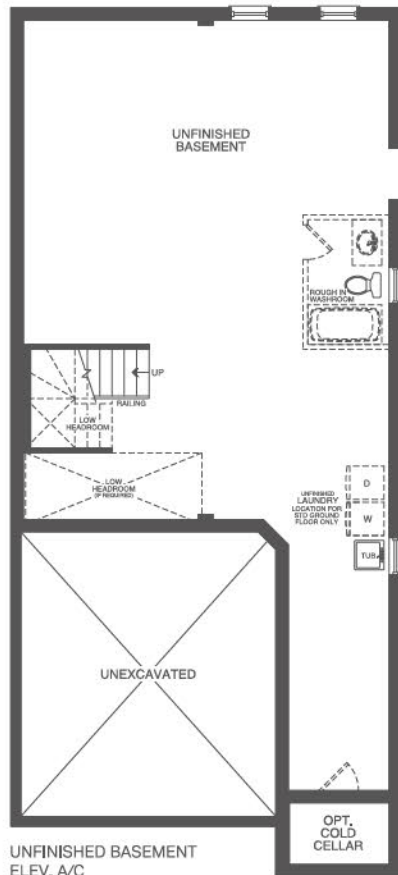
Elevation A 2,490 sq.ft.



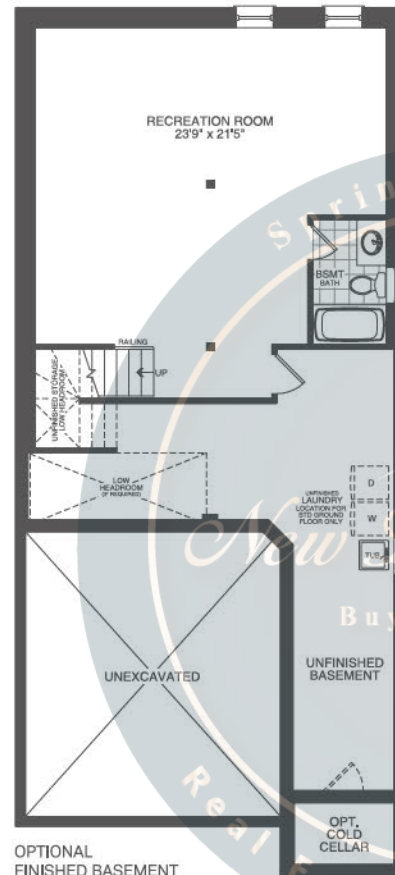
Elevation C 2,495 sq.ft.



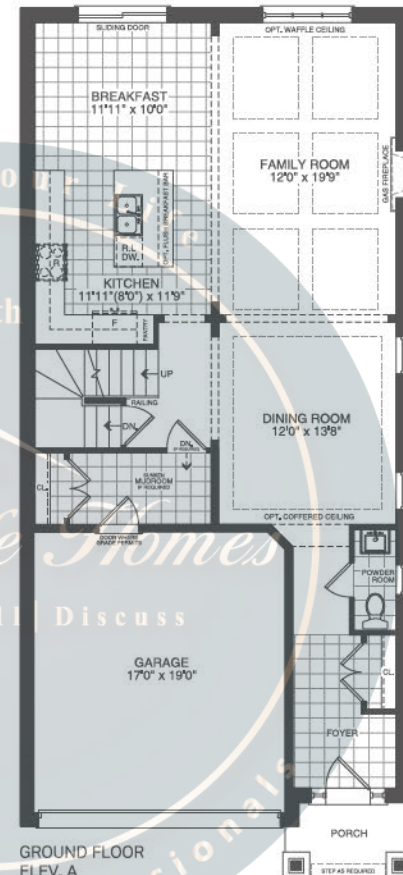
The floor plans, elevations, dimensions, specifications and architectural detailing shown are pre-construction plans only and may be changed or revised without notice as may be necessitated by architectural controls and the construction process. All dimensions are approximate. Actual usable floor space may vary from the stated area. House may be reversed. Steps may vary at any exterior entrance. Illustrations are artist's concept only. Exterior railings to be installed only as required by grade notwithstanding any illustrations or plans. E. & O.E. AUG 21 2024



UNFINISHED BASEMENT
ELEV. A/C
2490/2495 sf



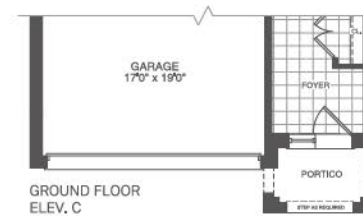
OPTIONAL
FINISHED BASEMENT
ELEV. A/C
3135/3140 sf



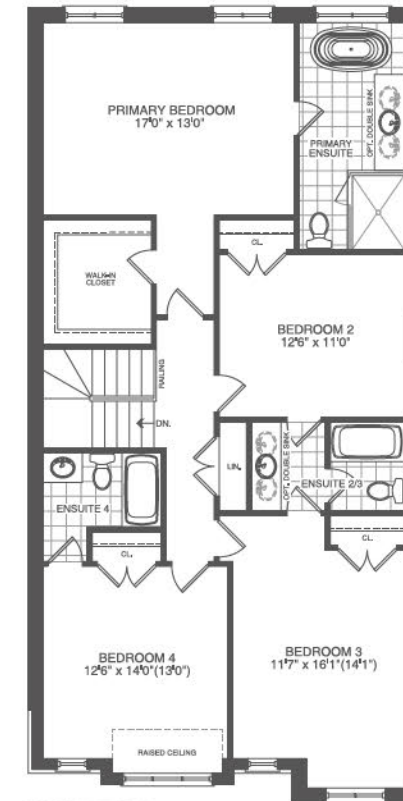
GROUND FLOOR
ELEV. A
2490 sf



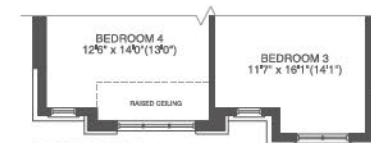
ALT. GROUND FLOOR
ELEV. A/C
2490/2495 sf



GROUND FLOOR
ELEV. C
2495 sf



SECOND FLOOR
ELEV. A
2490 sf



SECOND FLOOR
ELEV. C
2495 sf





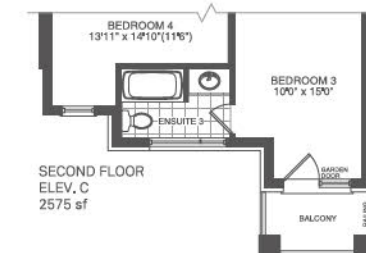
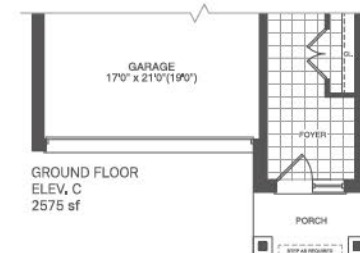
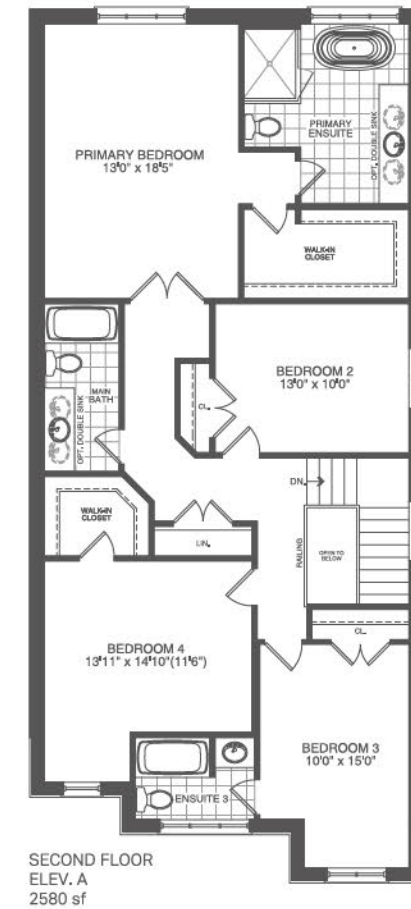
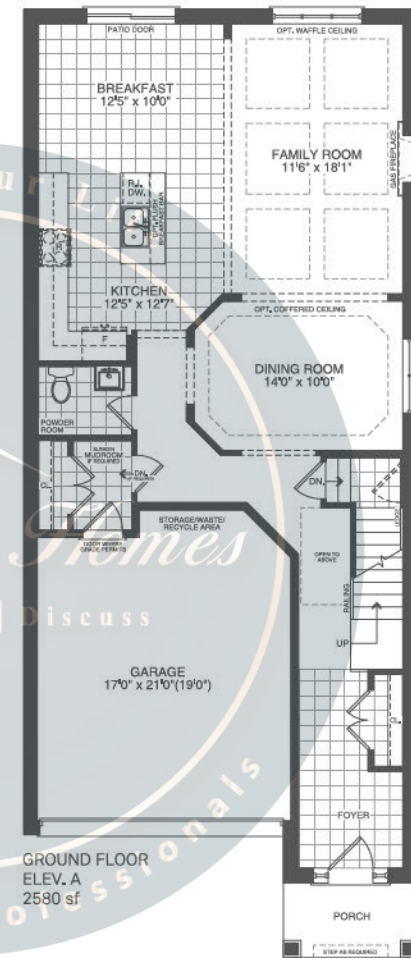
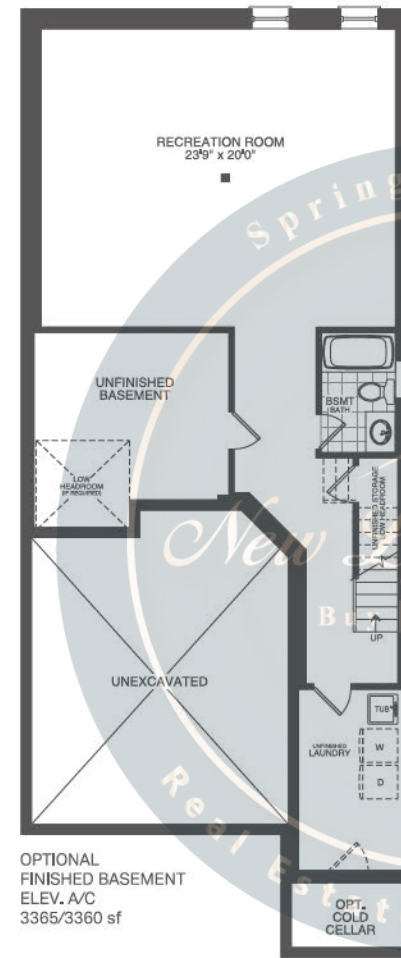
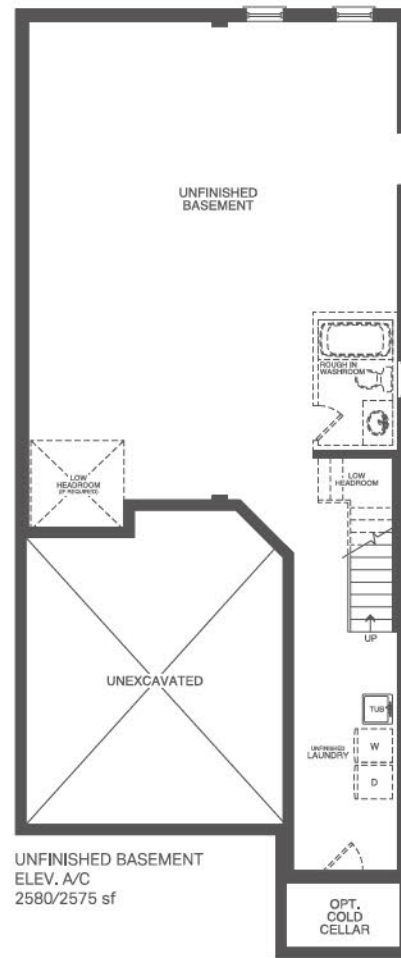
Elevation A 2,580 sq.ft.



Elevation C 2,575 sq.ft.



The floor plans, elevations, dimensions, specifications and architectural detailing shown are pre-construction plans only and may be changed or revised without notice as may be necessitated by architectural controls and the construction process. All dimensions are approximate. Actual usable floor space may vary from the stated area. House may be reversed. Steps may vary at any exterior entrance. Illustrations are artist's concept only. Exterior railings to be installed only as required by grade notwithstanding any illustrations or plans. E. & O.E. AUG 21 2024





Elevation A 2,720 sq.ft.



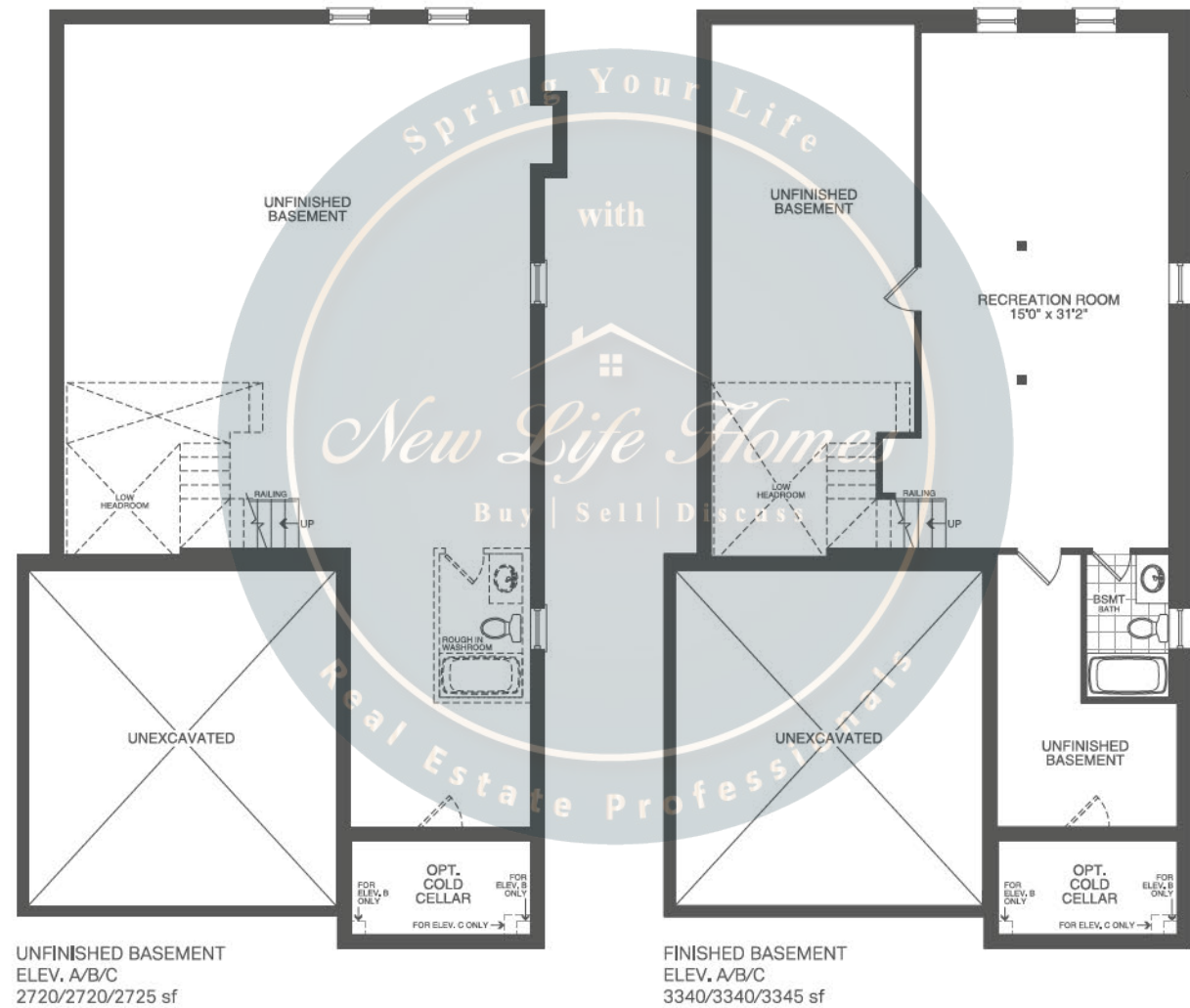
Elevation B 2,720 sq.ft.

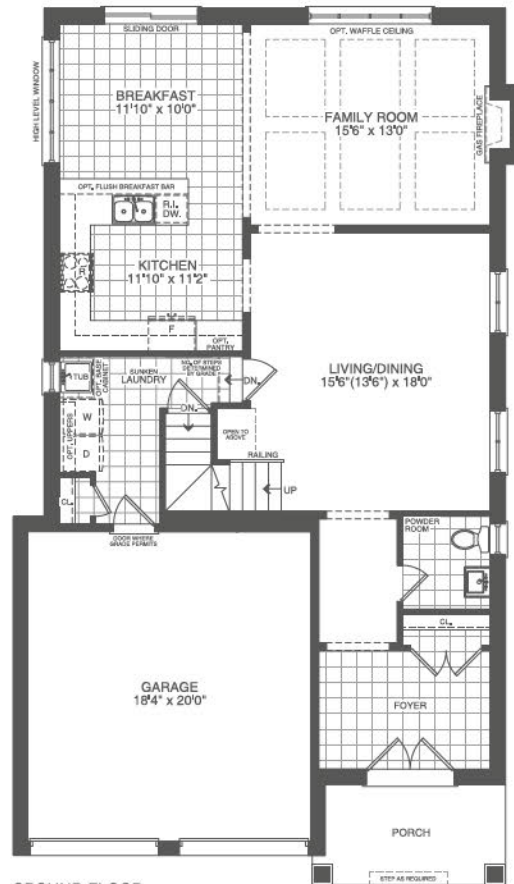


Elevation C 2,725 sq.ft.

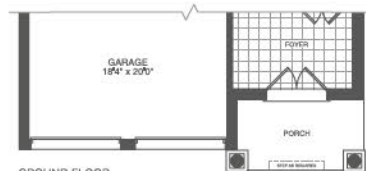


The floor plans, elevations, dimensions, specifications and architectural detailing shown are pre-construction plans only and may be changed or revised without notice including As may be necessitated by architectural controls and the construction process. All dimensions are approximate. Actual usable floor space may vary from the stated area. House may be reversed. Steps may vary at any exterior entrance. Illustrations are artist's concept only. Exterior railings to be installed only as required by grade notwithstanding any illustrations or plans. E. & O.E. NOV 14 2023

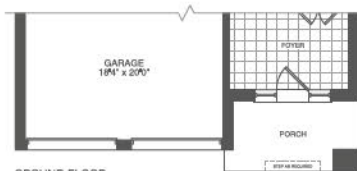




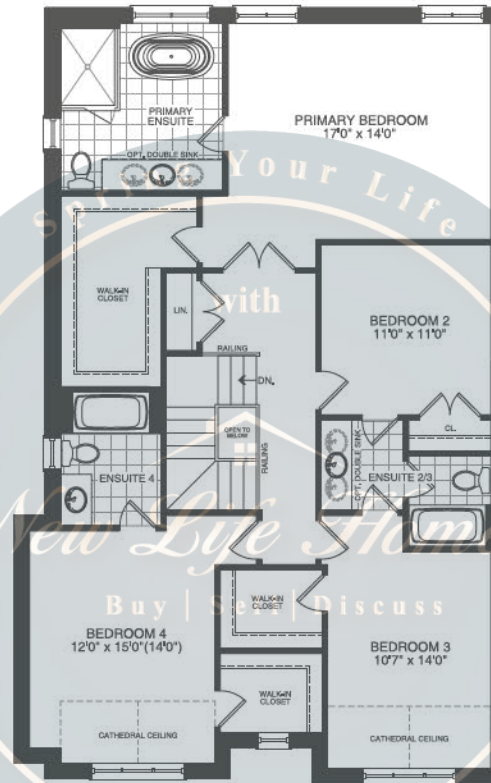
GROUND FLOOR
ELEV. A
2720 sf



GROUND FLOOR
ELEV. B
2720 sf



GROUND FLOOR
ELEV. C
2725 sf



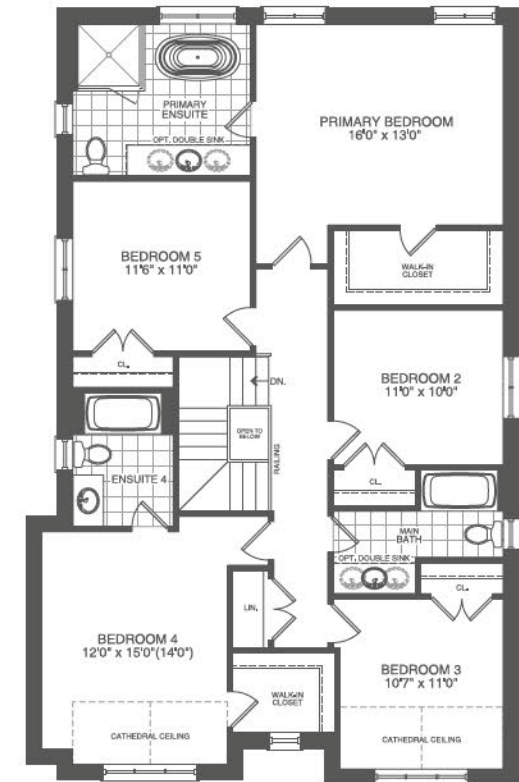
SECOND FLOOR
4 BEDROOM
ELEV. A
2720 sf



SECOND FLOOR
4 BEDROOM
ELEV. B
2720 sf



SECOND FLOOR
4 BEDROOM
ELEV. C
2725 sf



ALT. SECOND FLOOR
5 BEDROOM
ELEV. A
2720 sf



ALT. SECOND FLOOR
5 BEDROOM
ELEV. B
2720 sf



ALT. SECOND FLOOR
5 BEDROOM
ELEV. C
2725 sf





Elevation C 2,845 sq.ft.



Elevation A 2,845 sq.ft.



Elevation A with Optional Loft 3,440 sq.ft.



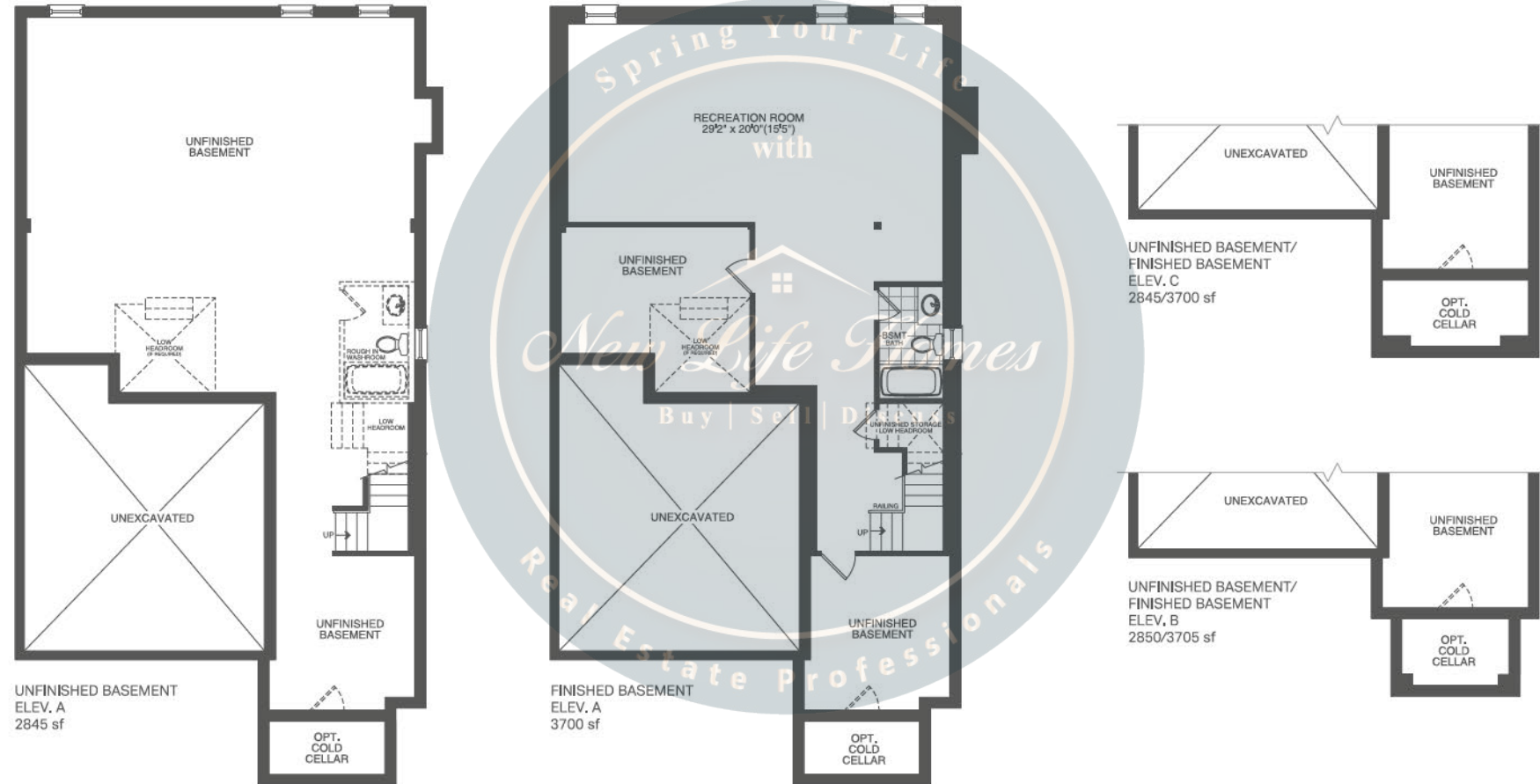
Elevation B 2,850 sq.ft.

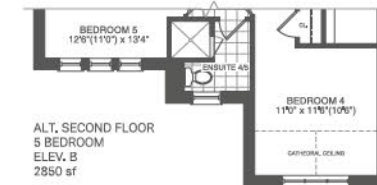
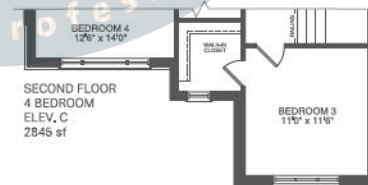
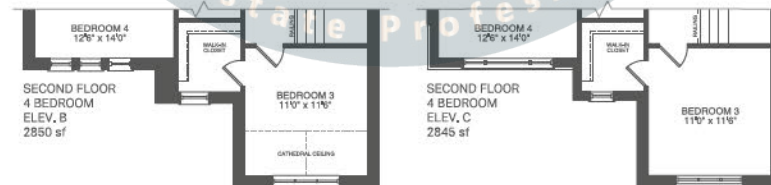
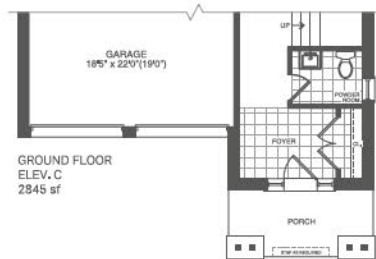
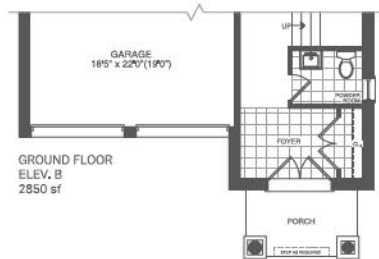
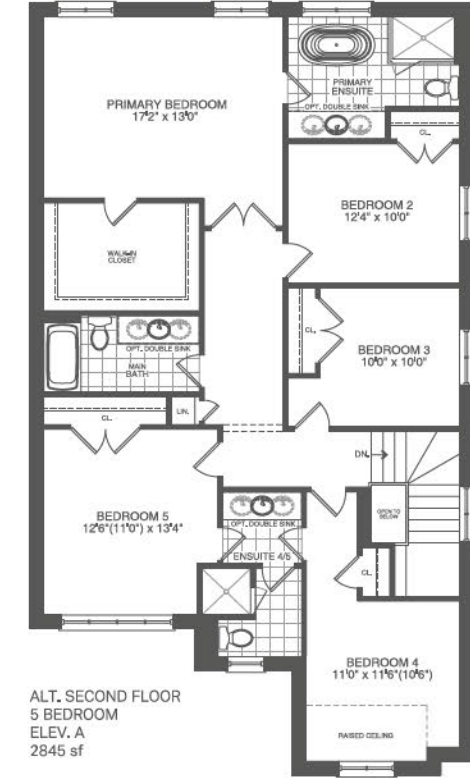
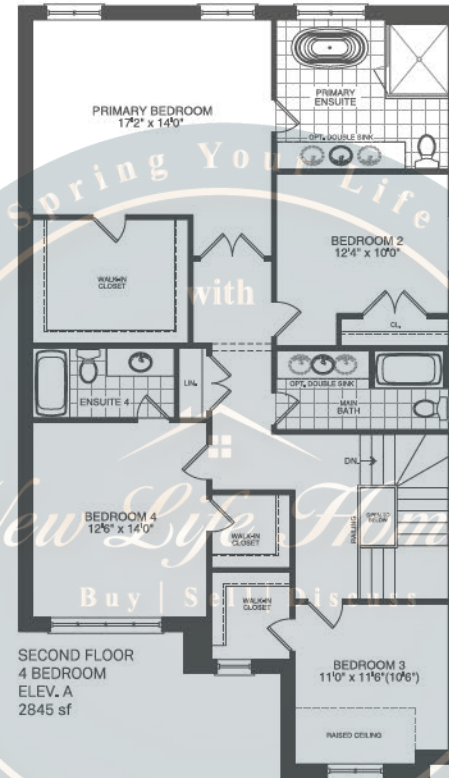
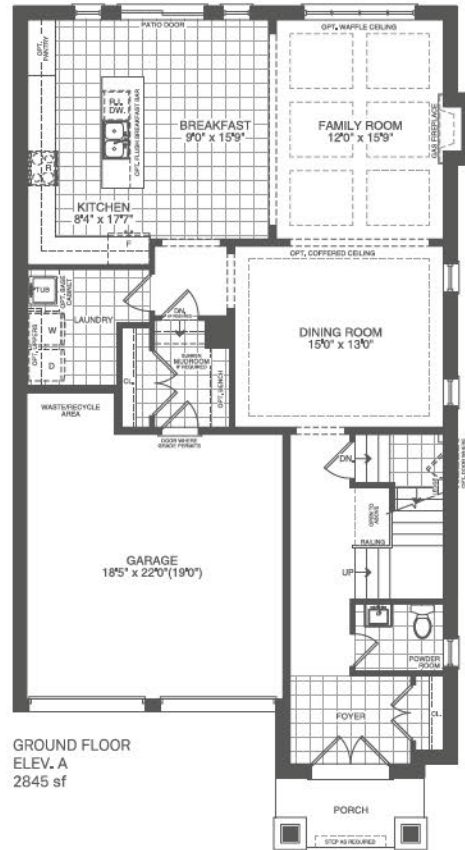


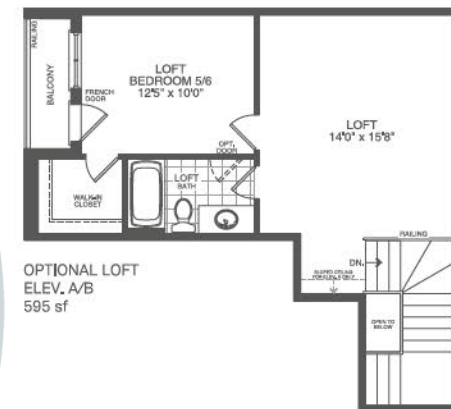
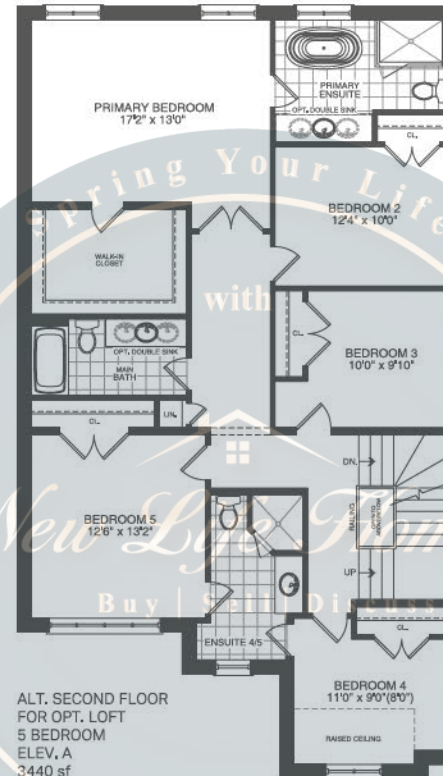
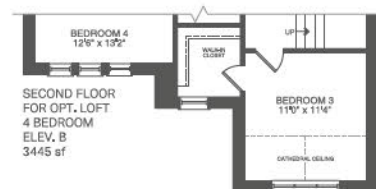
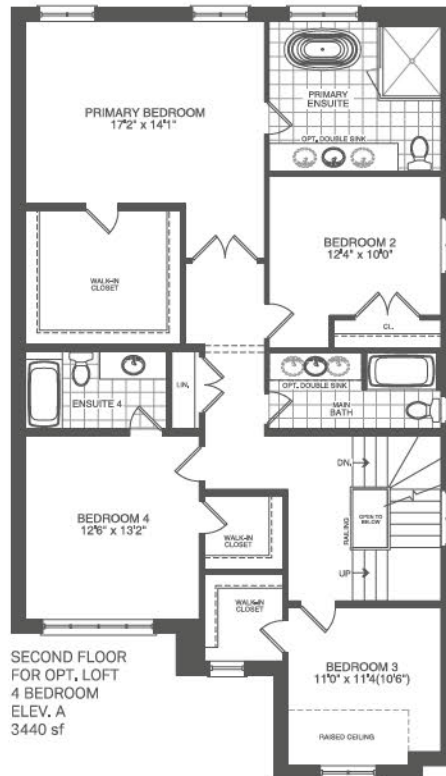
Elevation B with Optional Loft 3,445 sq.ft.



The floor plans, elevations, dimensions, specifications and architectural detailing shown are pre-construction plans only and may be changed or revised without notice including As may be necessitated by architectural controls and the construction process. All dimensions are approximate. Actual usable floor space may vary from the stated area. House may be reversed. Steps may vary at any exterior entrance. Illustrations are artist's concept only. Exterior railings to be installed only as required by grade notwithstanding any illustrations or plans. E.& O.E. NOV 14 2023









Elevation A 2,700 sq.ft.

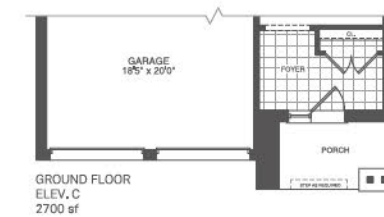
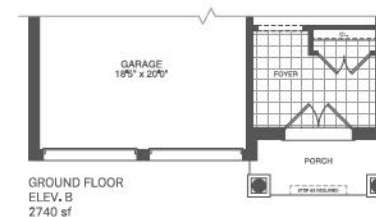
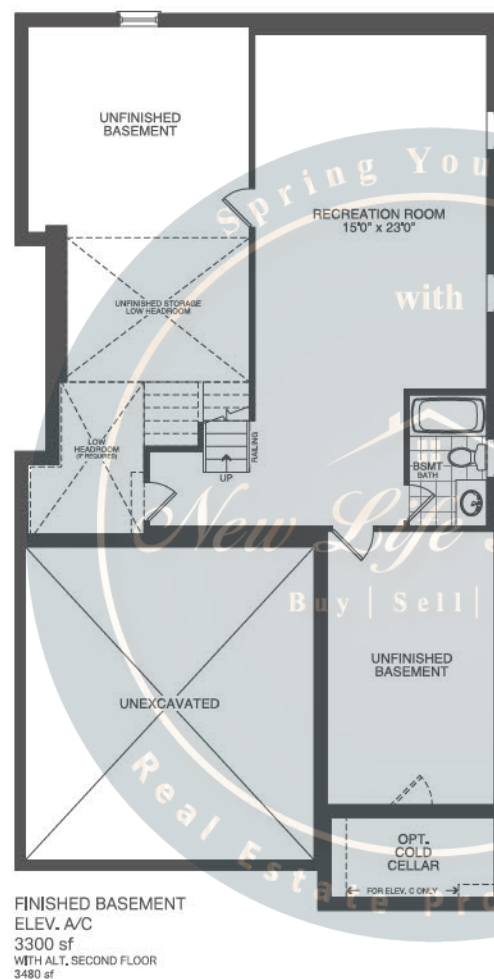
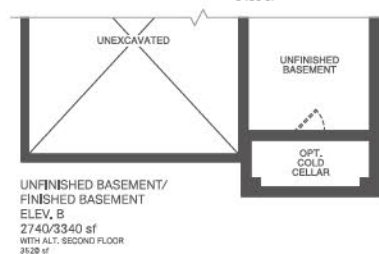


Elevation B 2,740 sq.ft.



Elevation C 2,700 sq.ft.



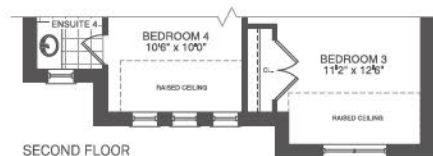


The floor plans, elevations, dimensions, specifications and architectural detailing shown are pre-construction plans only and may be changed or revised without notice including As may be necessitated by architectural controls and the construction process. All dimensions are approximate. Actual usable floor space may vary from the stated area. House may be reversed. Steps may vary at any exterior entrance. Illustrations are artist's concept only. Exterior railings to be installed only as required by grade notwithstanding any illustrations or plans. E & O.E. NOV 14 2023

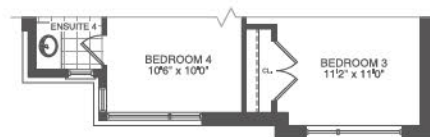


SECOND FLOOR
ELEV. A
2700 sf

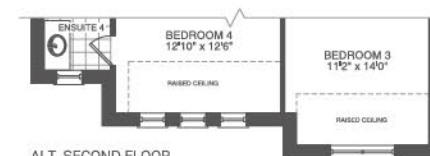
ALT. SECOND FLOOR
ELEV. A
2880 sf



SECOND FLOOR
ELEV. B
2740 sf



SECOND FLOOR
ELEV. C
2700 sf



ALT. SECOND FLOOR
ELEV. B
2920 sf



ALT. SECOND FLOOR
ELEV. C
2880 sf





Elevation A 2,905 sq.ft.

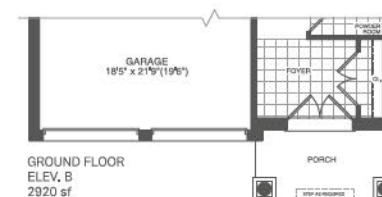
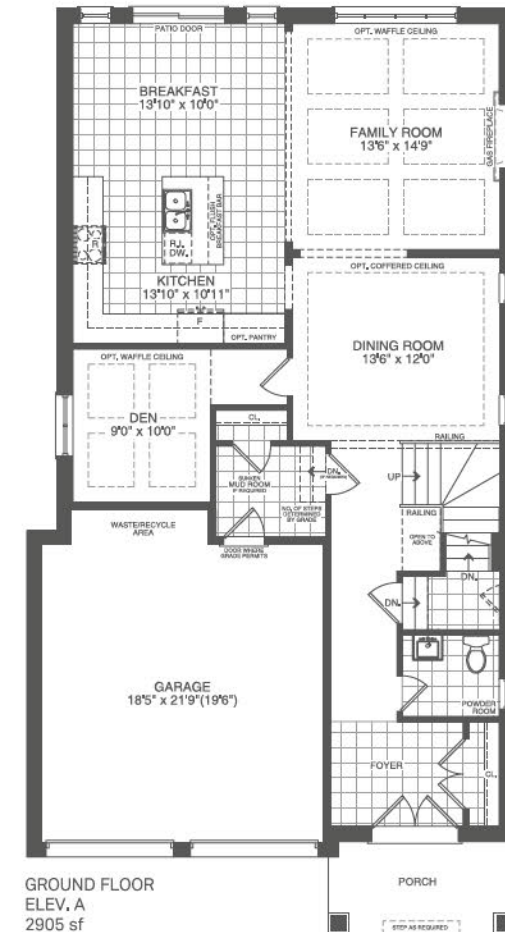
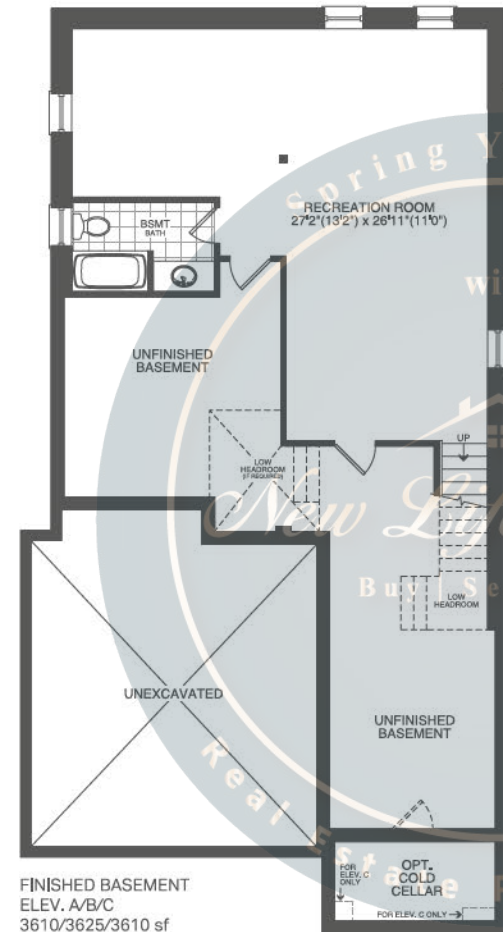
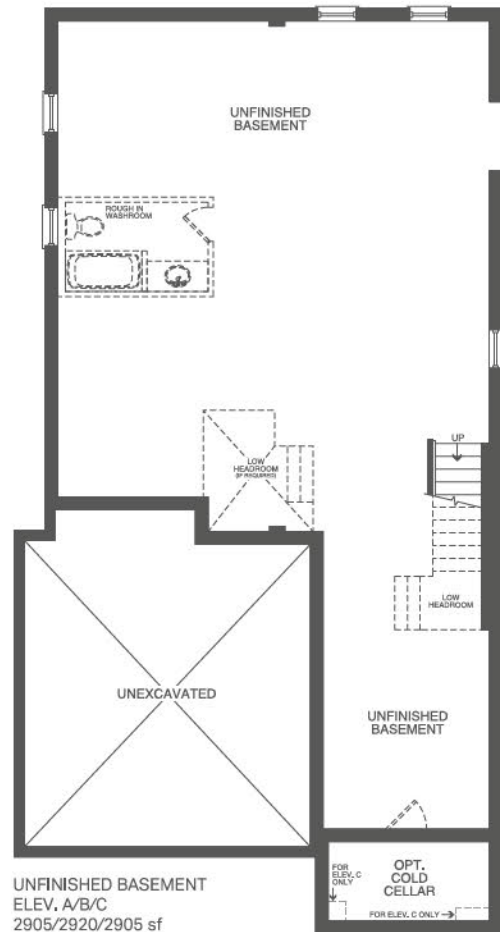


Elevation B 2,920 sq.ft.

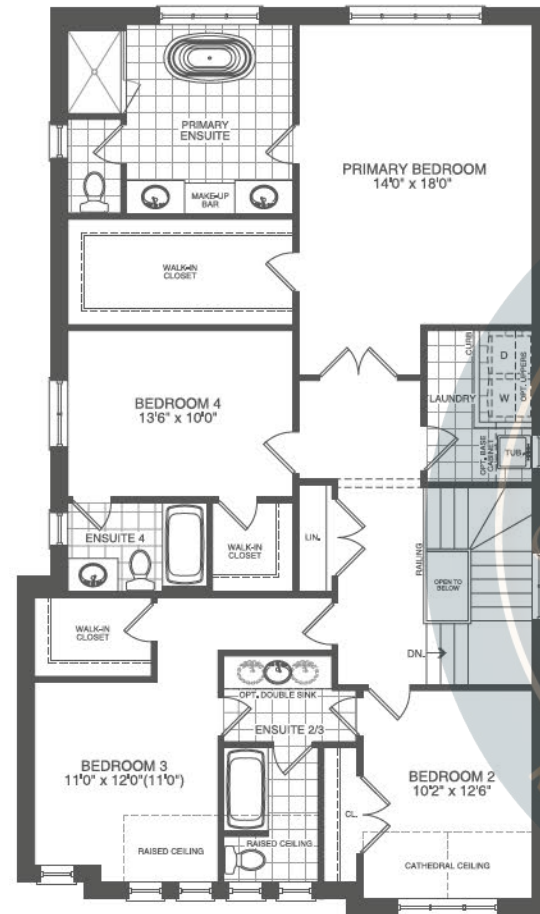


Elevation C 2,905 sq.ft.

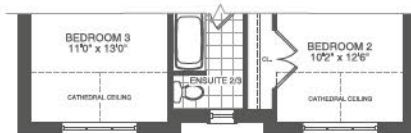




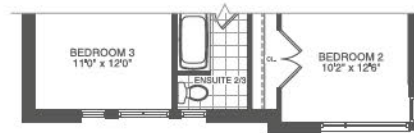
The floor plans, elevations, dimensions, specifications and architectural detailing shown are pre-construction plans only and may be changed or revised without notice including As may be necessitated by architectural controls and the construction process. All dimensions are approximate. Actual usable floor space may vary from the stated area. House may be reversed. Steps may vary at any exterior entrance. Illustrations are artist's concept only. Exterior railings to be installed only as required by grade notwithstanding any illustrations or plans. E. & O.E. NOV 14 2023



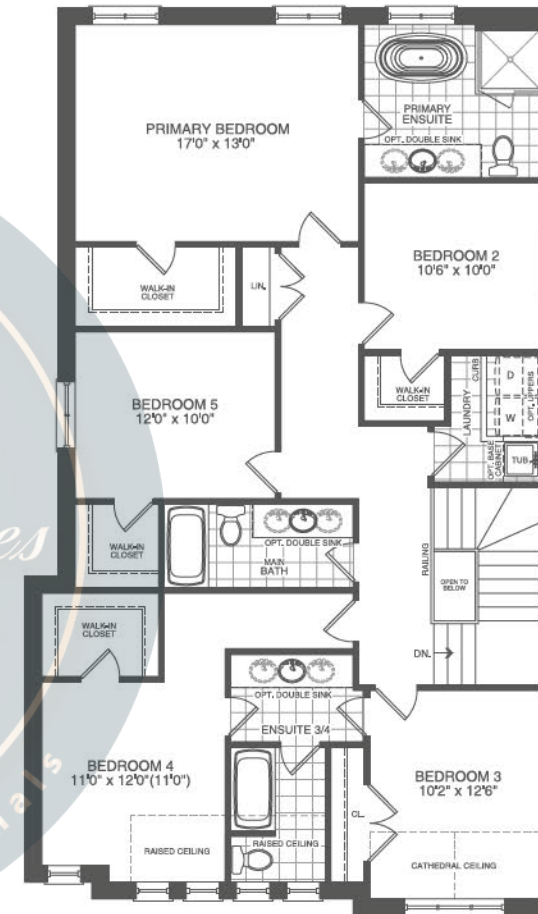
SECOND FLOOR
4 BEDROOM
ELEV. A
2905 sf



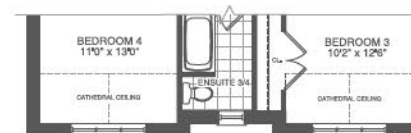
SECOND FLOOR
4 BEDROOM
ELEV. B
2920 sf



SECOND FLOOR
4 BEDROOM
ELEV. C
2905 sf



ALT. SECOND FLOOR
5 BEDROOM
ELEV. A
2905 sf



ALT. SECOND FLOOR
5 BEDROOM
ELEV. B
2920 sf



ALT. SECOND FLOOR
5 BEDROOM
ELEV. C
2905 sf





Elevation A 2,880 sq.ft.

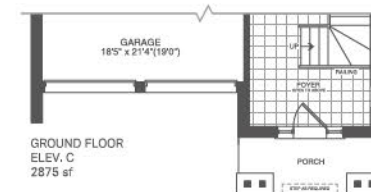
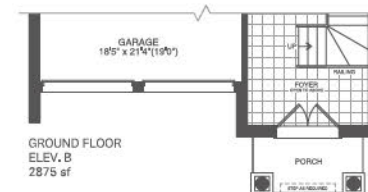
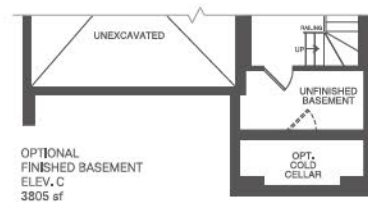
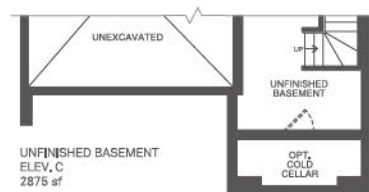
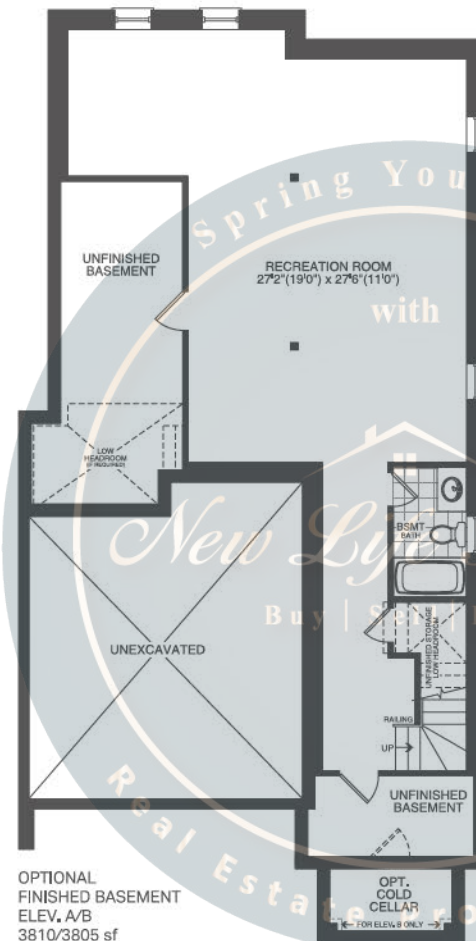
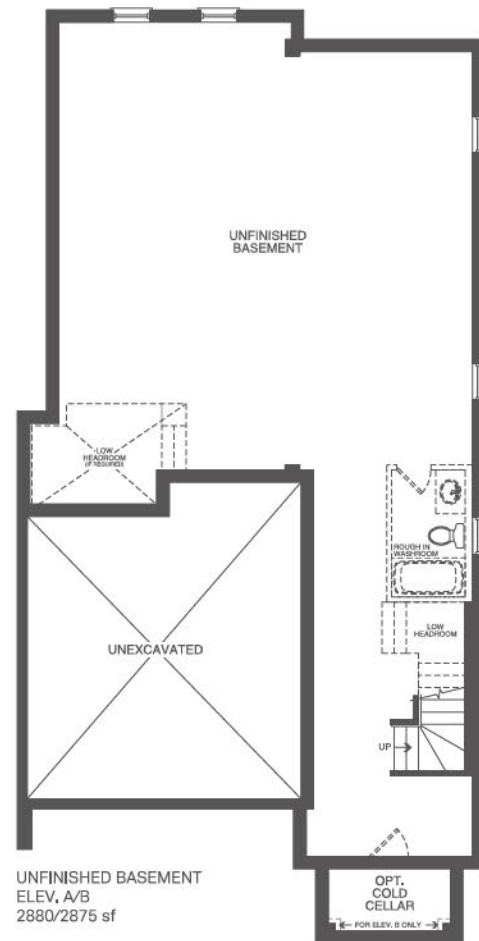


Elevation B 2,875 sq.ft.

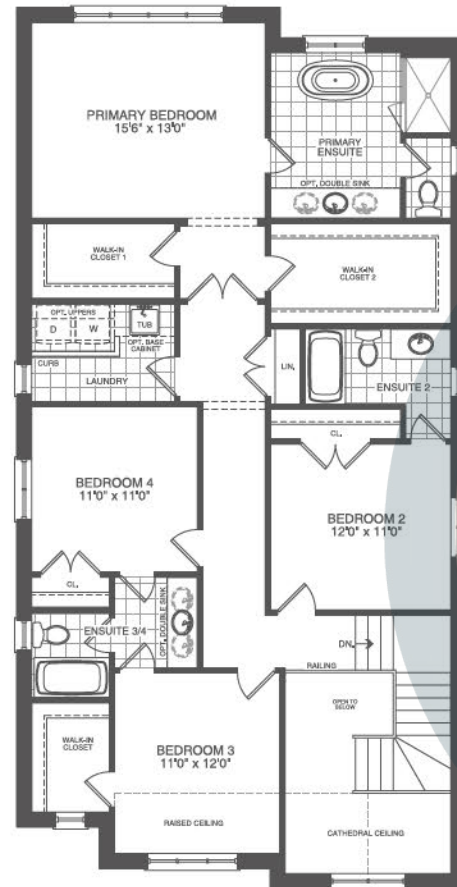


Elevation C 2,875 sq.ft.

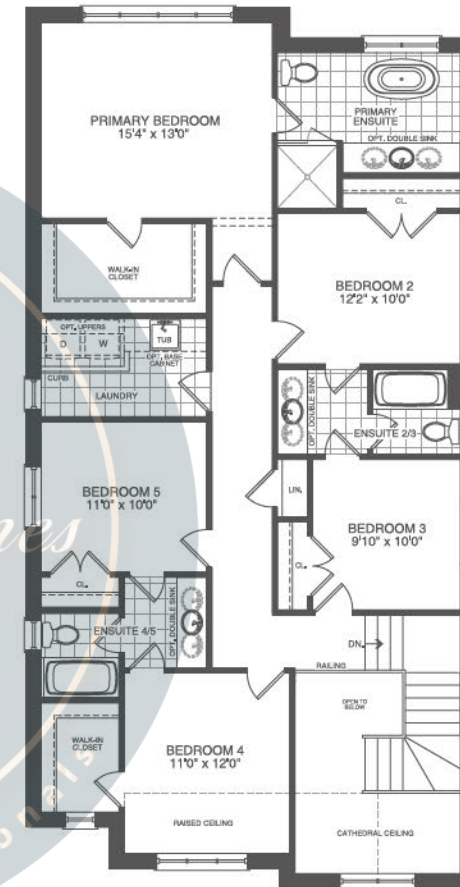




The floor plans, elevations, dimensions, specifications and architectural detailing shown are pre-construction plans only and may be changed or revised without notice as may be necessitated by architectural controls and the construction process. All dimensions are approximate. Actual usable floor space may vary from the stated area. House may be reversed. Steps may vary at any exterior entrance. Illustrations are artist's concept only. Exterior railings to be installed only as required by grade notwithstanding any illustrations or plans. E. & O.E. AUG 21 2024



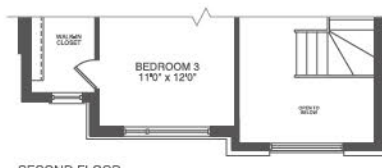
SECOND FLOOR
4 BEDROOM
ELEV. A
2880 sf



ALT. SECOND FLOOR
5 BEDROOM
ELEV. A
2880 sf



SECOND FLOOR
4 BEDROOM
ELEV. B
2875 sf



SECOND FLOOR
4 BEDROOM
ELEV. C
2875 sf



ALT. SECOND FLOOR
5 BEDROOM
ELEV. B
2875 sf



ALT. SECOND FLOOR
5 BEDROOM
ELEV. C
2875 sf





Elevation C 3,240 sq.ft.



Elevation A 3,240 sq.ft.



Elevation A with Optional Loft 3,845 sq.ft.



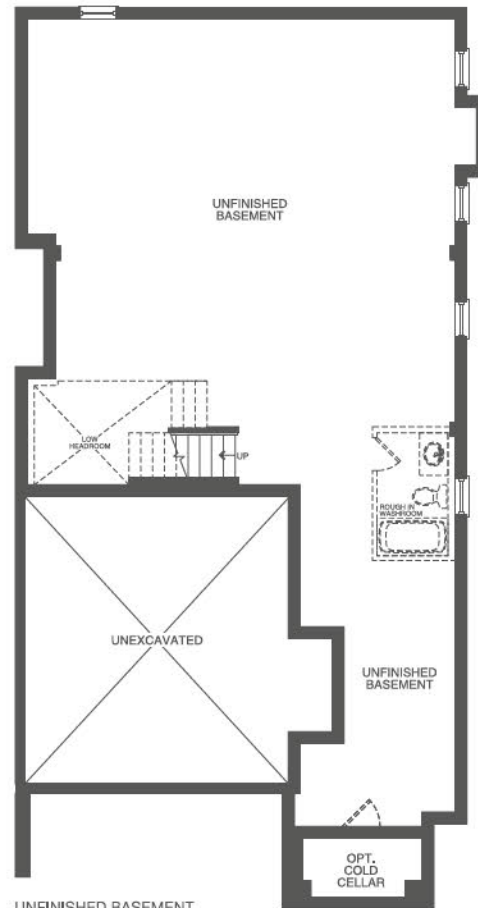
Elevation B 3,235 sq.ft.



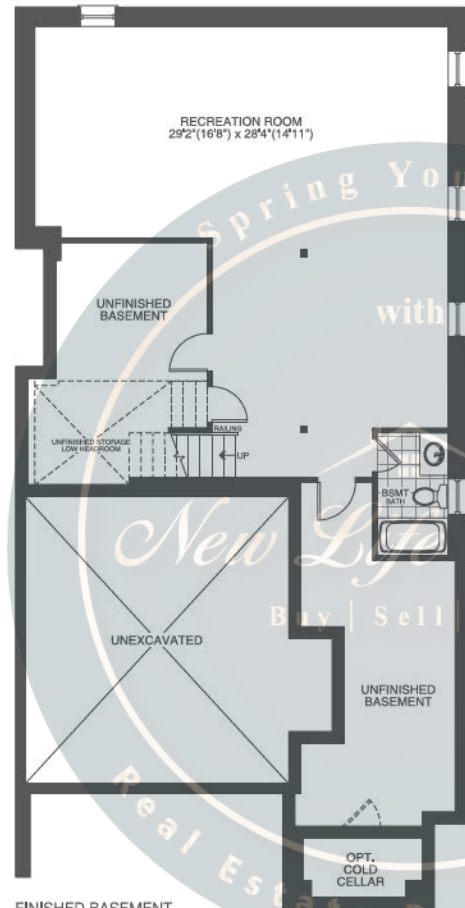
Elevation B with Optional Loft 3,840 sq.ft.



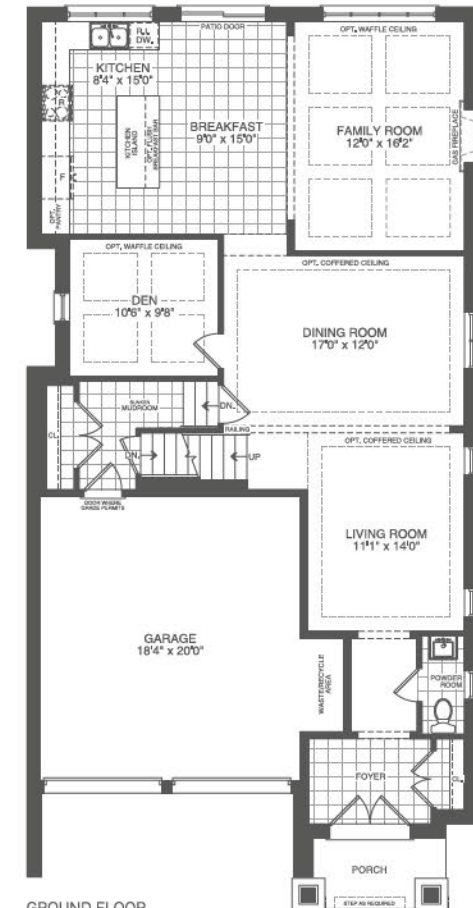
The floor plans, elevations, dimensions, specifications and architectural detailing shown are pre-construction plans only and may be changed or revised without notice including As may be necessitated by architectural controls and the construction process. All dimensions are approximate. Actual usable floor space may vary from the stated area. House may be reversed. Steps may vary at any exterior entrance. Illustrations are artist's concept only. Exterior railings to be installed only as required by grade notwithstanding any illustrations or plans. E.& O.E. NOV 14 2023



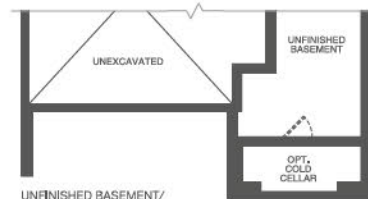
UNFINISHED BASEMENT
ELEV. A
3240 sf



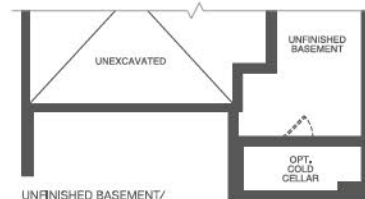
FINISHED BASEMENT
ELEV. A
4120 sf



GROUND FLOOR
ELEV. A
3240 sf



UNFINISHED BASEMENT/
FINISHED BASEMENT
ELEV. B
3235/4115 sf



UNFINISHED BASEMENT/
FINISHED BASEMENT
ELEV. C
3240/4120 sf



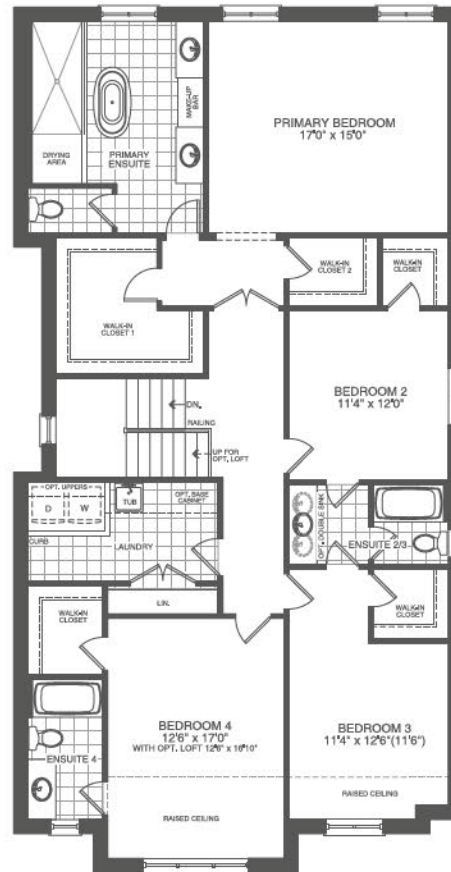
GROUND FLOOR
ELEV. B
3235 sf



GROUND FLOOR
ELEV. C
3240 sf



The floor plans, elevations, dimensions, specifications and architectural detailing shown are pre-construction plans only and may be changed or revised without notice including As may be necessitated by architectural controls and the construction process. All dimensions are approximate. Actual usable floor space may vary from the stated area. House may be reversed. Steps may vary at any exterior entrance. Illustrations are artist's concept only. Exterior railings to be installed only as required by grade notwithstanding any illustrations or plans. E. & O.E. NOV 14 2023



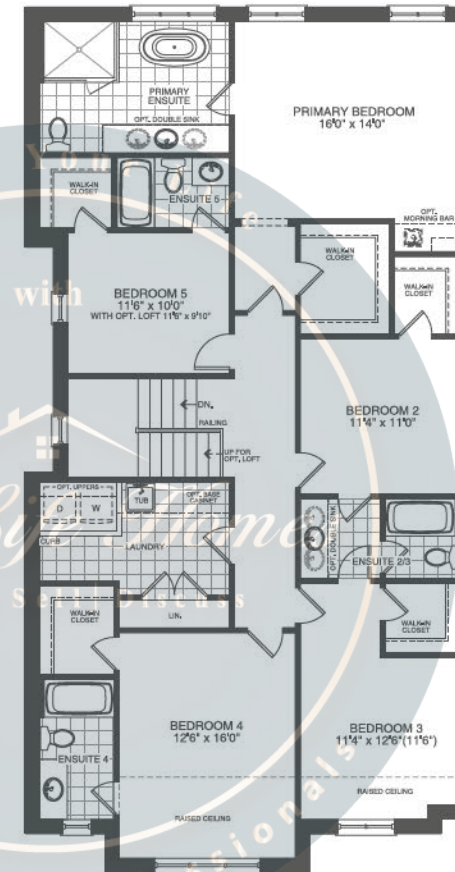
SECOND FLOOR
4 BEDROOM
ELEV. A
3240 sf



SECOND FLOOR
4 BEDROOM
ELEV. B
3235 sf



SECOND FLOOR
4 BEDROOM
ELEV. C
3240 sf



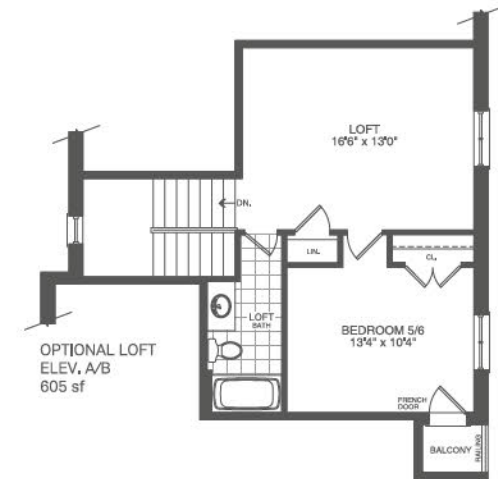
ALT. SECOND FLOOR
5 BEDROOM
ELEV. A
3240 sf



ALT. SECOND FLOOR
5 BEDROOM
ELEV. B
3235 sf



ALT. SECOND FLOOR
5 BEDROOM
ELEV. C
3240 sf



OPTIONAL LOFT
ELEV. A/B
605 sf



The floor plans, elevations, dimensions, specifications and architectural detailing shown are pre-construction plans only and may be changed or revised without notice including As may be necessitated by architectural controls and the construction process. All dimensions are approximate. Actual usable floor space may vary from the stated area. House may be reversed. Steps may vary at any exterior entrance. Illustrations are artist's concept only. Exterior railings to be installed only as required by grade notwithstanding any illustrations or plans. E. & O.E. NOV 14 2023



Elevation A 3,220 sq.ft.

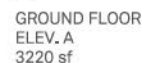
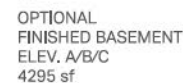


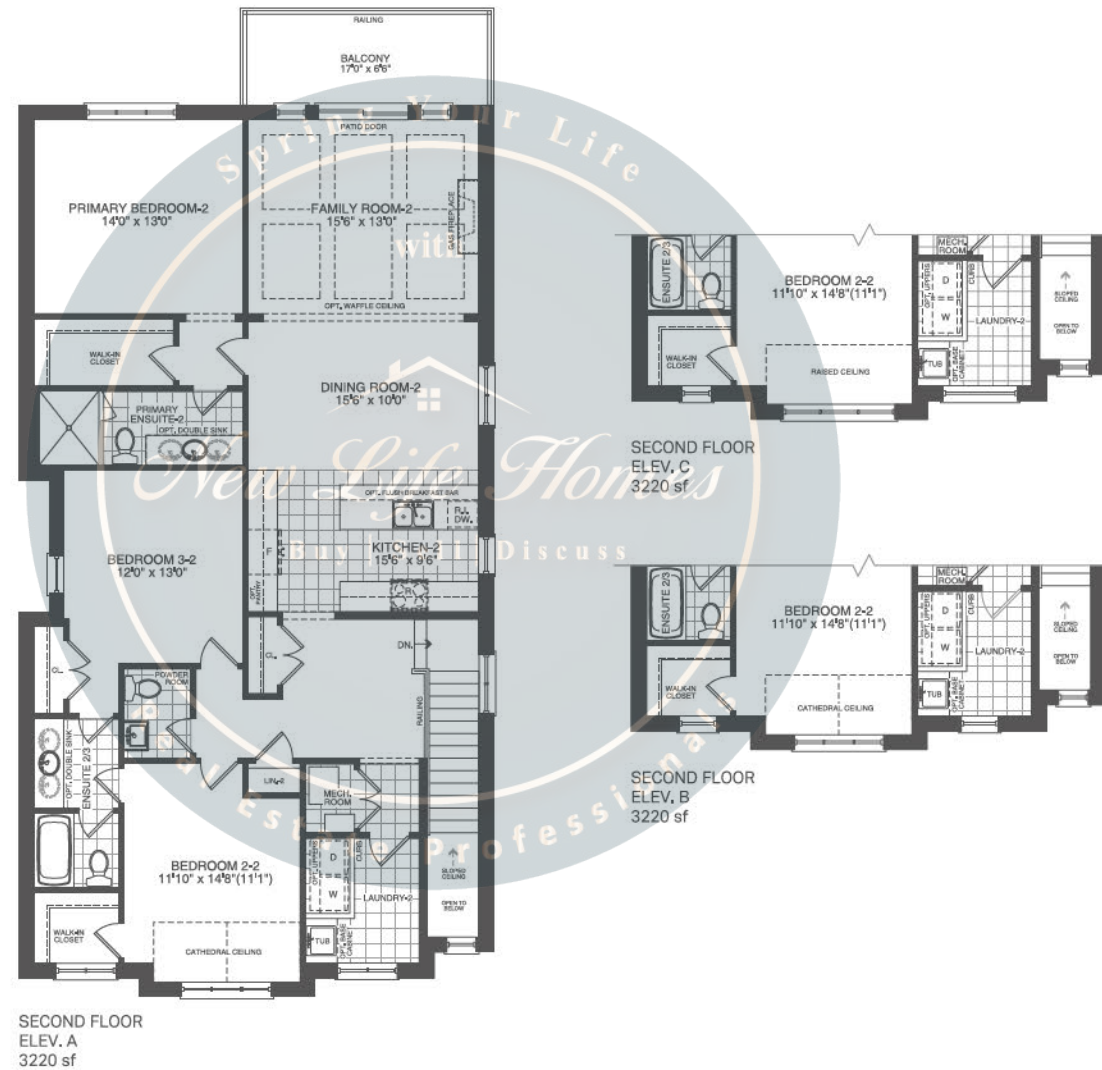
Elevation B 3,220 sq.ft.



Elevation C 3,220 sq.ft.









Elevation A 1,825 sq.ft.



Elevation B 1,825 sq.ft.



Elevation C 1,825 sq.ft.



The floor plans, elevations, dimensions, specifications and architectural detailing shown are pre-construction plans only and may be changed or revised without notice including As may be necessitated by architectural controls and the construction process. All dimensions are approximate. Actual usable floor space may vary from the stated area. House may be reversed. Steps may vary at any exterior entrance. Illustrations are artist's concept only. Exterior railings to be installed only as required by grade notwithstanding any illustrations or plans. E.& O.E. NOV 17 2023





Elevation A 3,170 sq.ft.

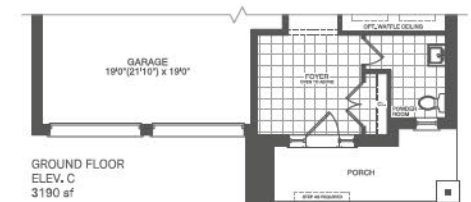
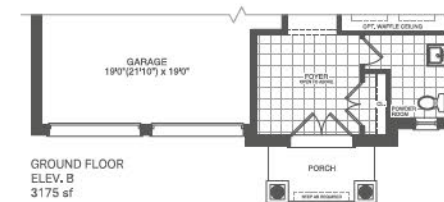
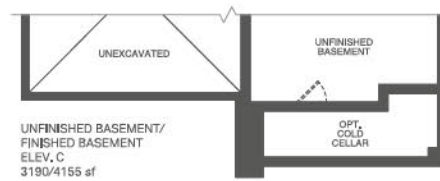
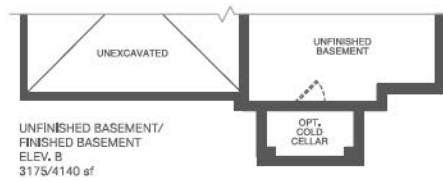
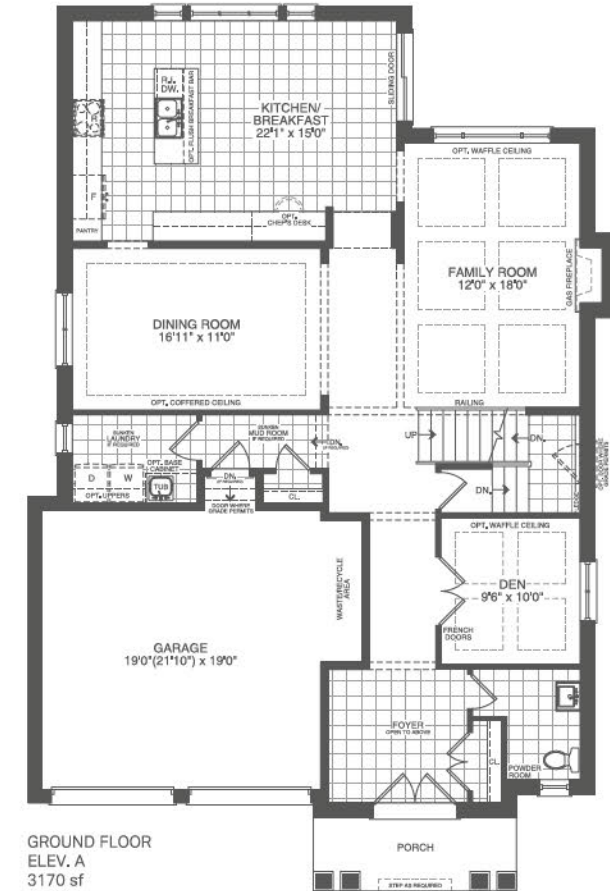
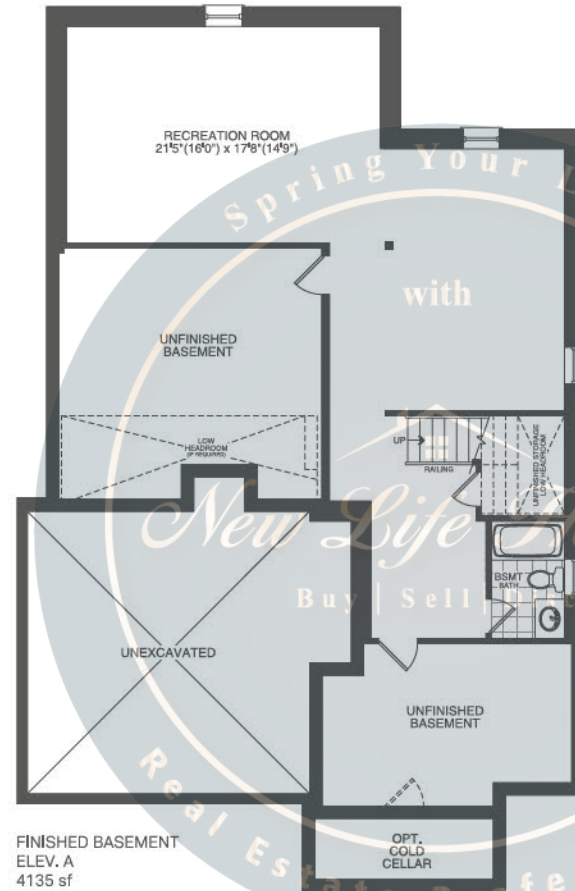
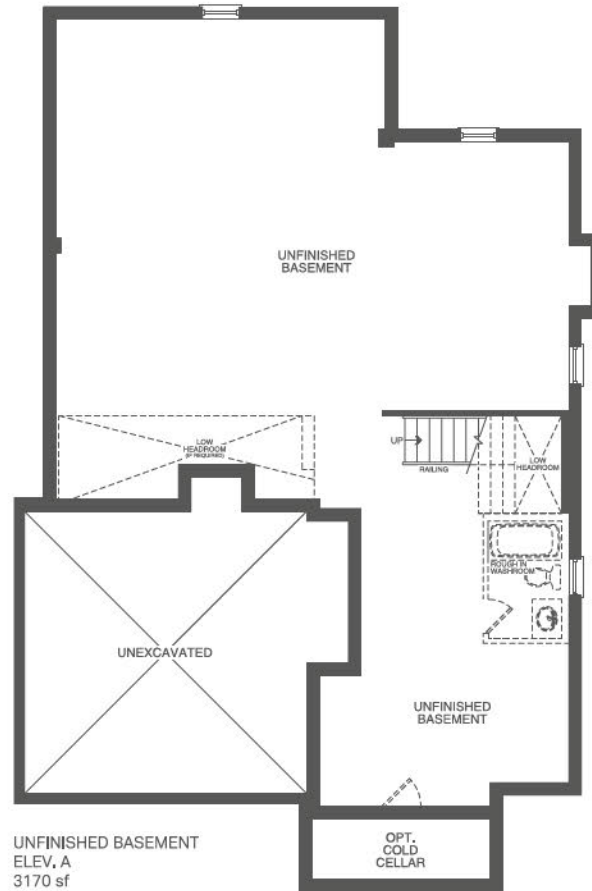


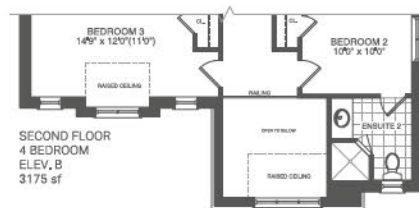
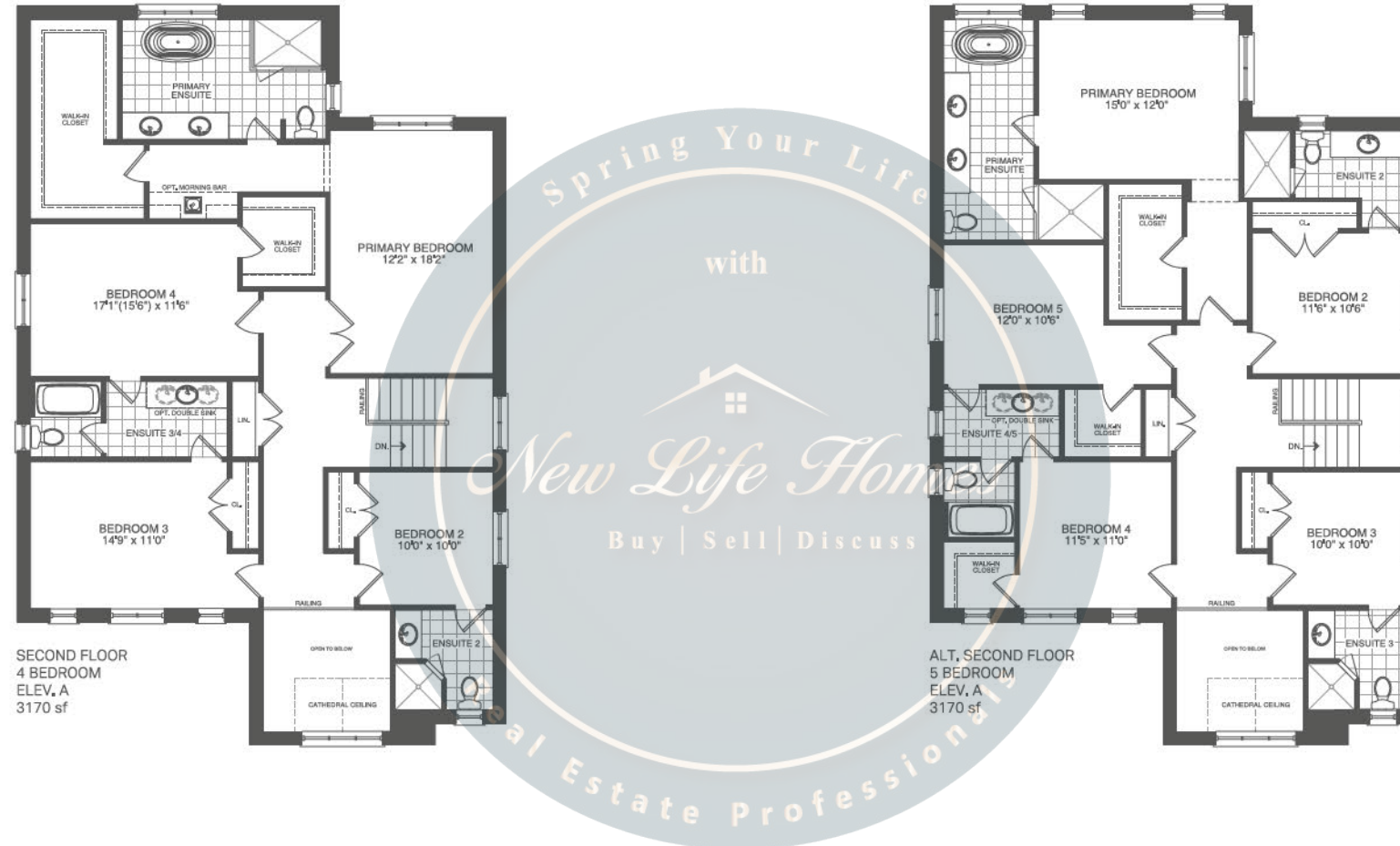
Elevation B 3,175 sq.ft.



Elevation C 3,190 sq.ft.









Elevation A 3,420 sq.ft.

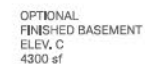
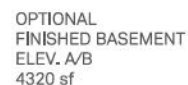


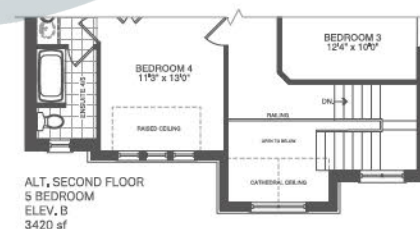
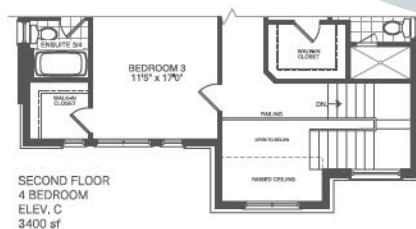
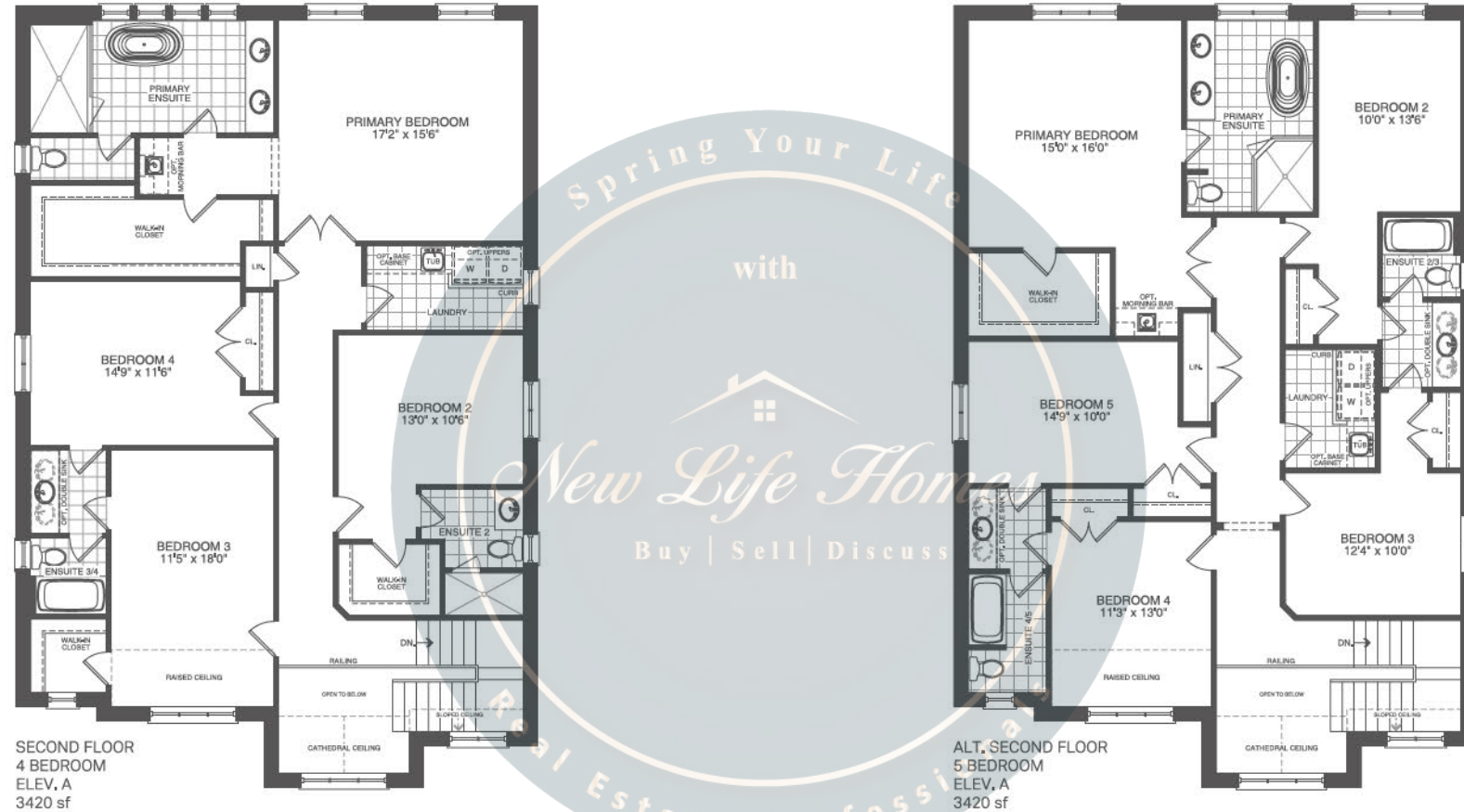
Elevation B 3,420 sq.ft.



Elevation C 3,400 sq.ft.









Elevation A 3,605 sq.ft.

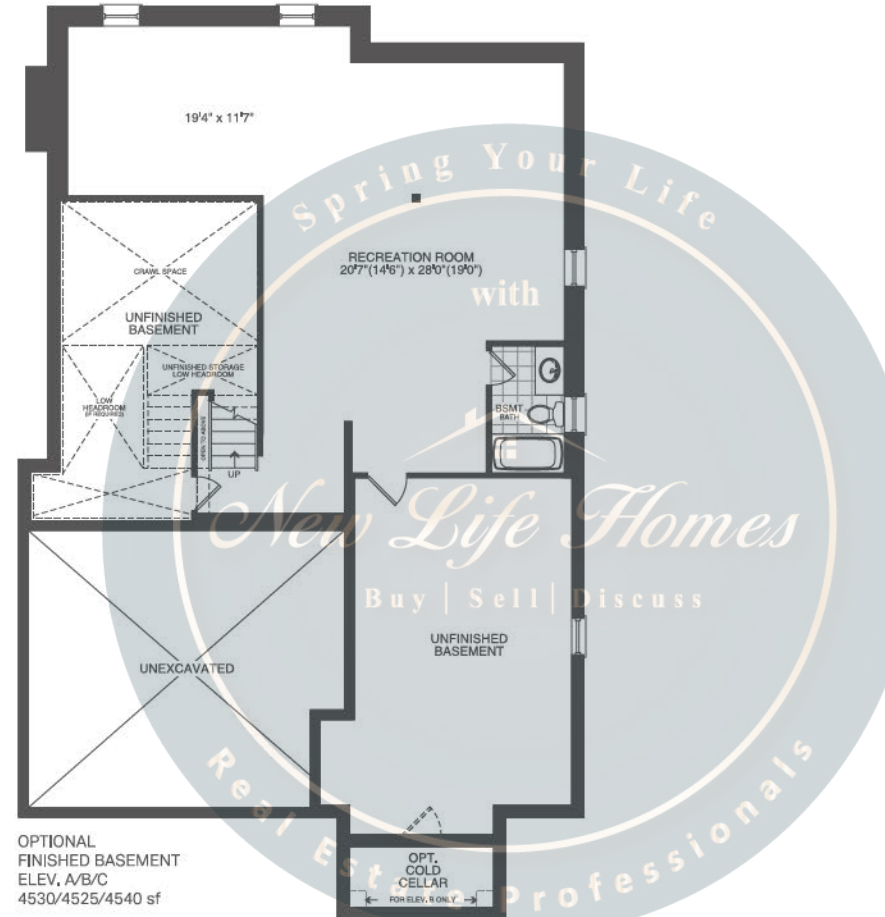
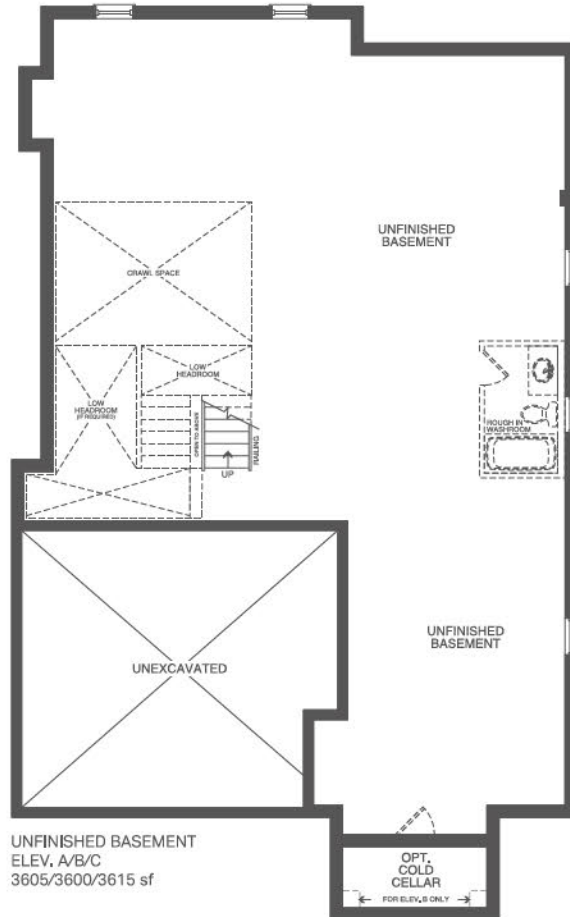


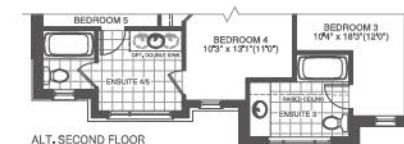
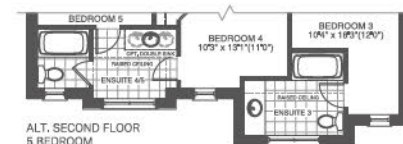
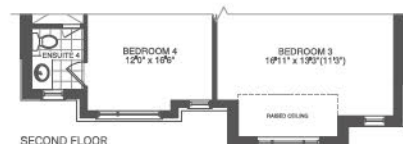
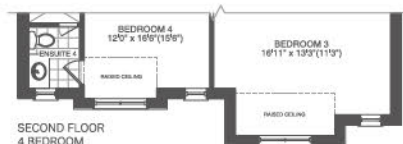
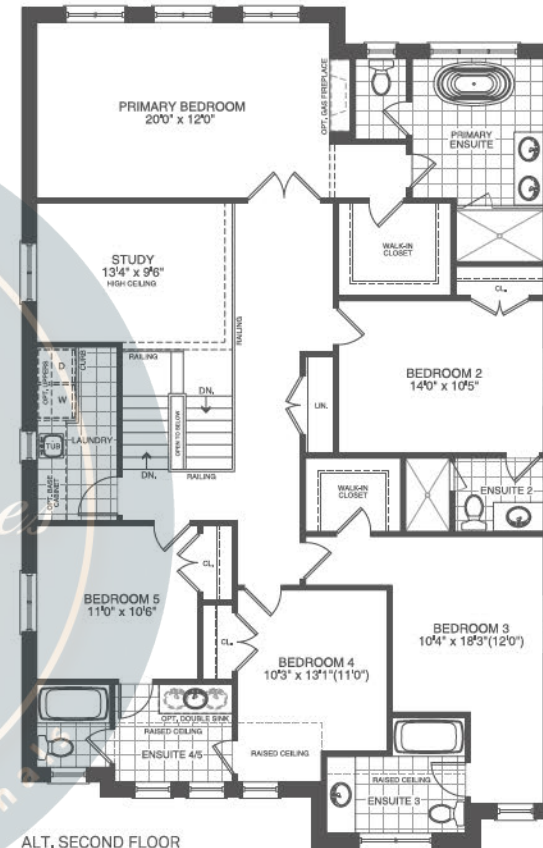
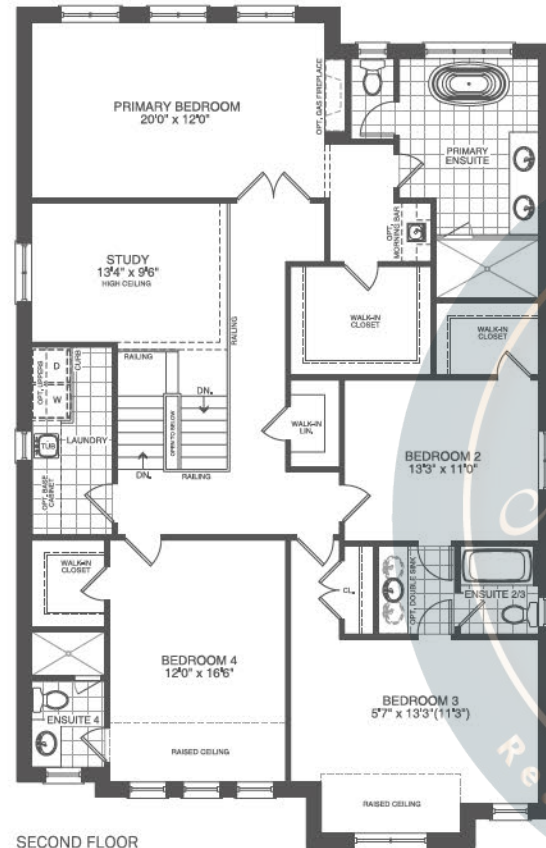
Elevation B 3,600 sq.ft.



Elevation C 3,615 sq.ft.









Elevation A 3,505 sq.ft.



Elevation B 3,490 sq.ft.

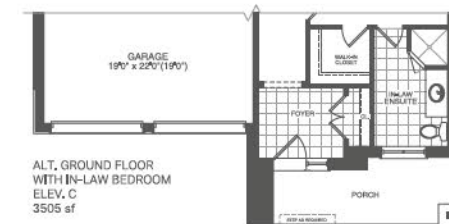
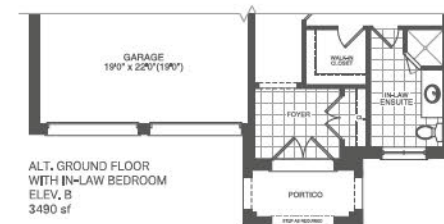
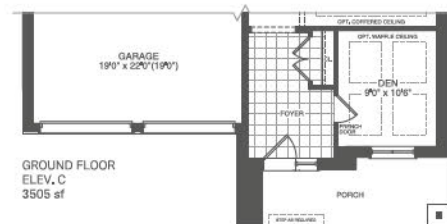
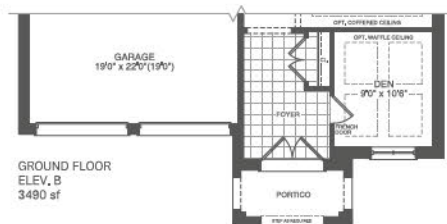
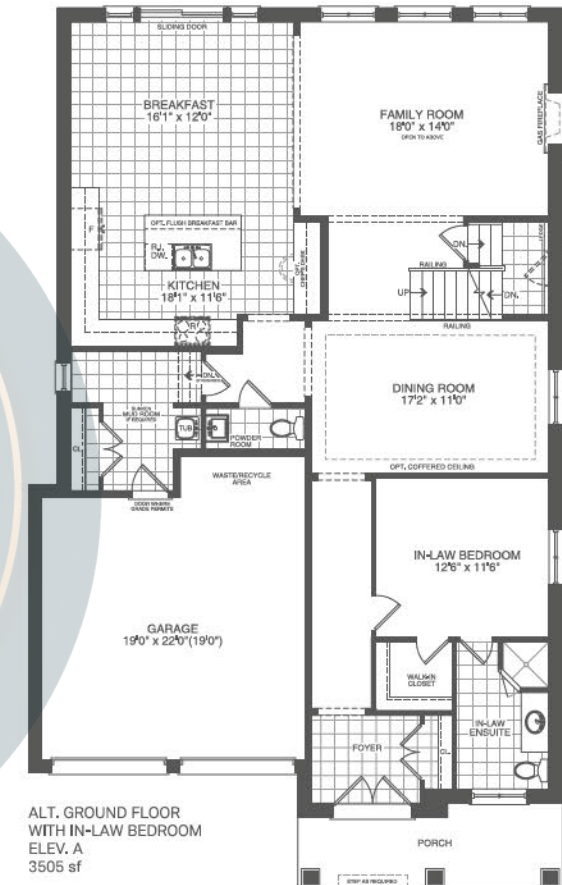
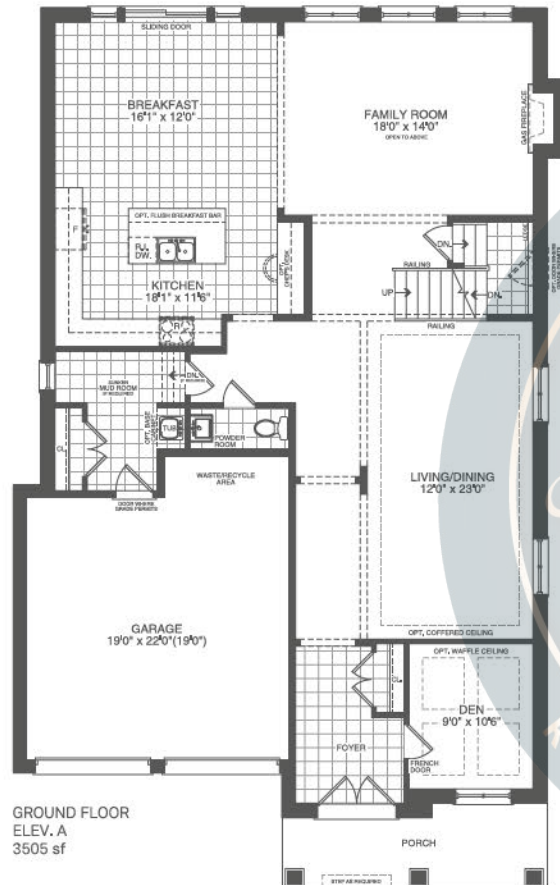


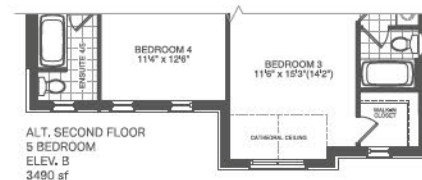
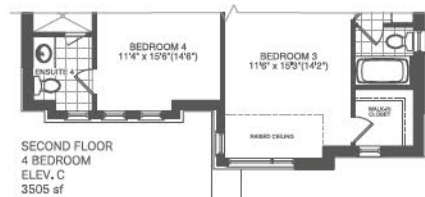
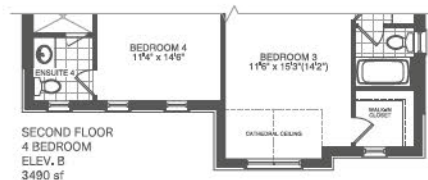
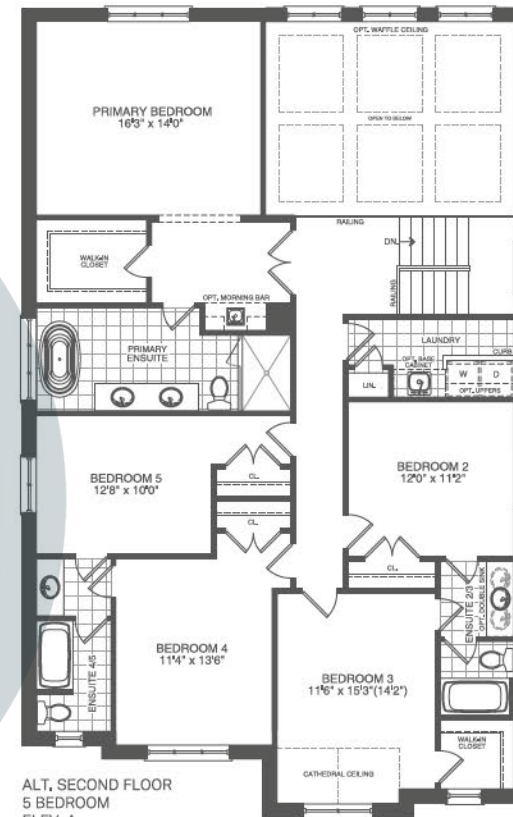
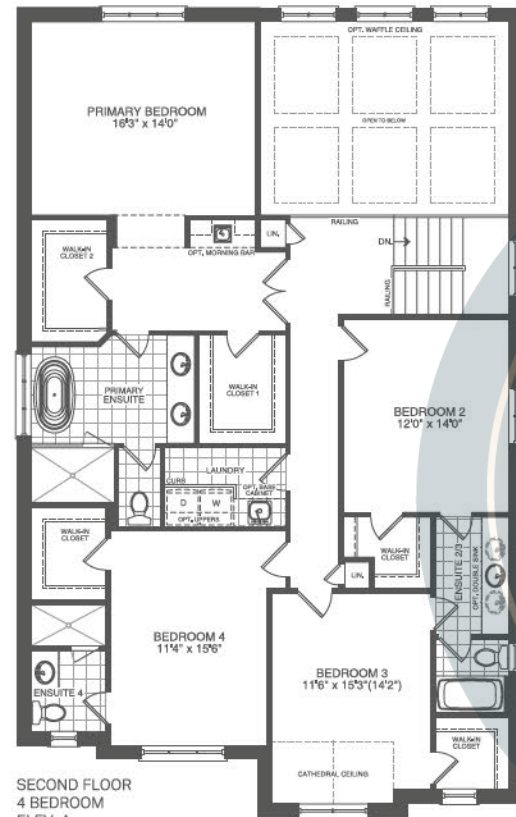
Elevation C 3,505 sq.ft.



The floor plans, elevations, dimensions, specifications and architectural detailing shown are pre-construction plans only and may be changed or revised without notice including As may be necessitated by architectural controls and the construction process. All dimensions are approximate. Actual usable floor space may vary from the stated area. House may be reversed. Steps may vary at any exterior entrance. Illustrations are artist's concept only. Exterior railings to be installed only as required by grade notwithstanding any illustrations or plans. E.& O.E. NOV 17 2023







The floor plans, elevations, dimensions, specifications and architectural detailing shown are pre-construction plans only and may be changed or revised without notice including As may be necessitated by architectural controls and the construction process. All dimensions are approximate. Actual usable floor space may vary from the stated area. House may be reversed. Steps may vary at any exterior entrance. Illustrations are artist's concept only. Exterior railings to be installed only as required by grade notwithstanding any illustrations or plans. E. & O.E. NOV 17 2023



Elevation C 3,940 sq.ft.



Elevation A 3,935 sq.ft.



Elevation A with Optional Loft 4,675 sq.ft.



Elevation B 3,940 sq.ft.



Elevation B with Optional Loft 4,680 sq.ft.



The floor plans, elevations, dimensions, specifications and architectural detailing shown are pre-construction plans only and may be changed or revised without notice including As may be necessitated by architectural controls and the construction process. All dimensions are approximate. Actual usable floor space may vary from the stated area. House may be reversed. Steps may vary at any exterior entrance. Illustrations are artist's concept only. Exterior railings to be installed only as required by grade notwithstanding any illustrations or plans. E.& O.E. NOV 17 2023



Elevation A 1,995 sq.ft.



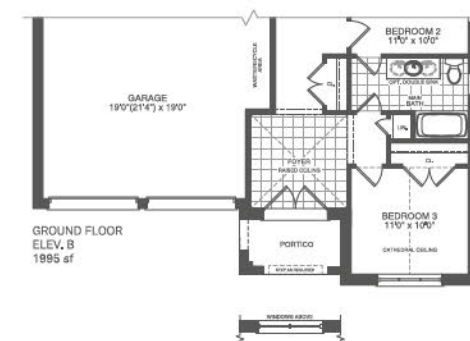
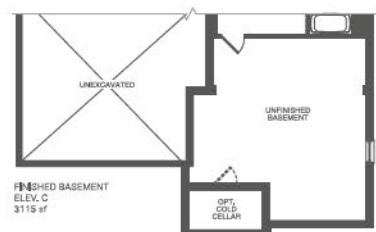
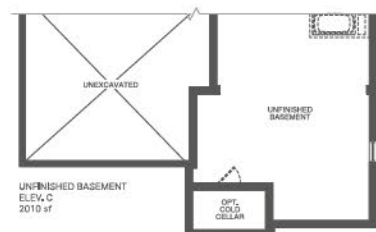
Elevation B 1,995 sq.ft.



Elevation C 2,010 sq.ft.



The floor plans, elevations, dimensions, specifications and architectural detailing shown are pre-construction plans only and may be changed or revised without notice including As may be necessitated by architectural controls and the construction process. All dimensions are approximate. Actual usable floor space may vary from the stated area. House may be reversed. Steps may vary at any exterior entrance. Illustrations are artist's concept only. Exterior railings to be installed only as required by grade notwithstanding any illustrations or plans. E. & O.E. NOV 17 2023



The floor plans, elevations, dimensions, specifications and architectural detailing shown are pre-construction plans only and may be changed or revised without notice including As may be necessitated by architectural controls and the construction process. All dimensions are approximate. Actual usable floor space may vary from the stated area. House may be reversed. Steps may vary at any exterior entrance. Illustrations are artist's concept only. Exterior railings to be installed only as required by grade notwithstanding any illustrations or plans. E & O.E. NOV 17 2023



Elevation A 3,720 sq.ft.



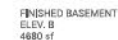
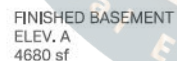
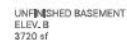
Elevation B 3,720 sq.ft.



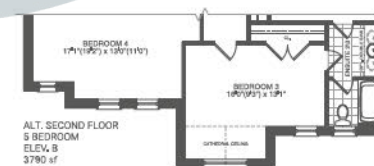
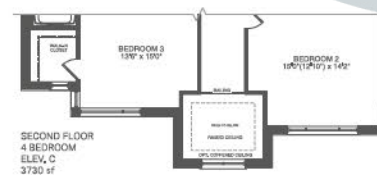
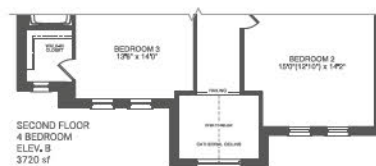
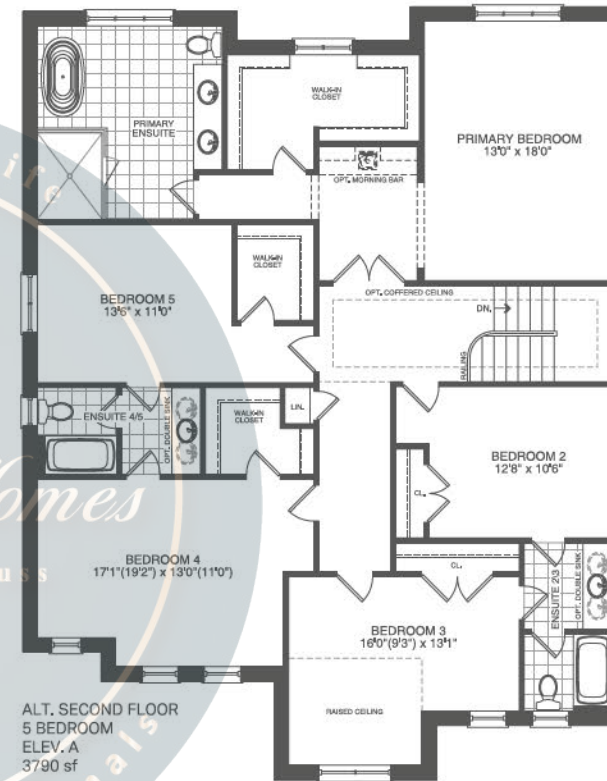
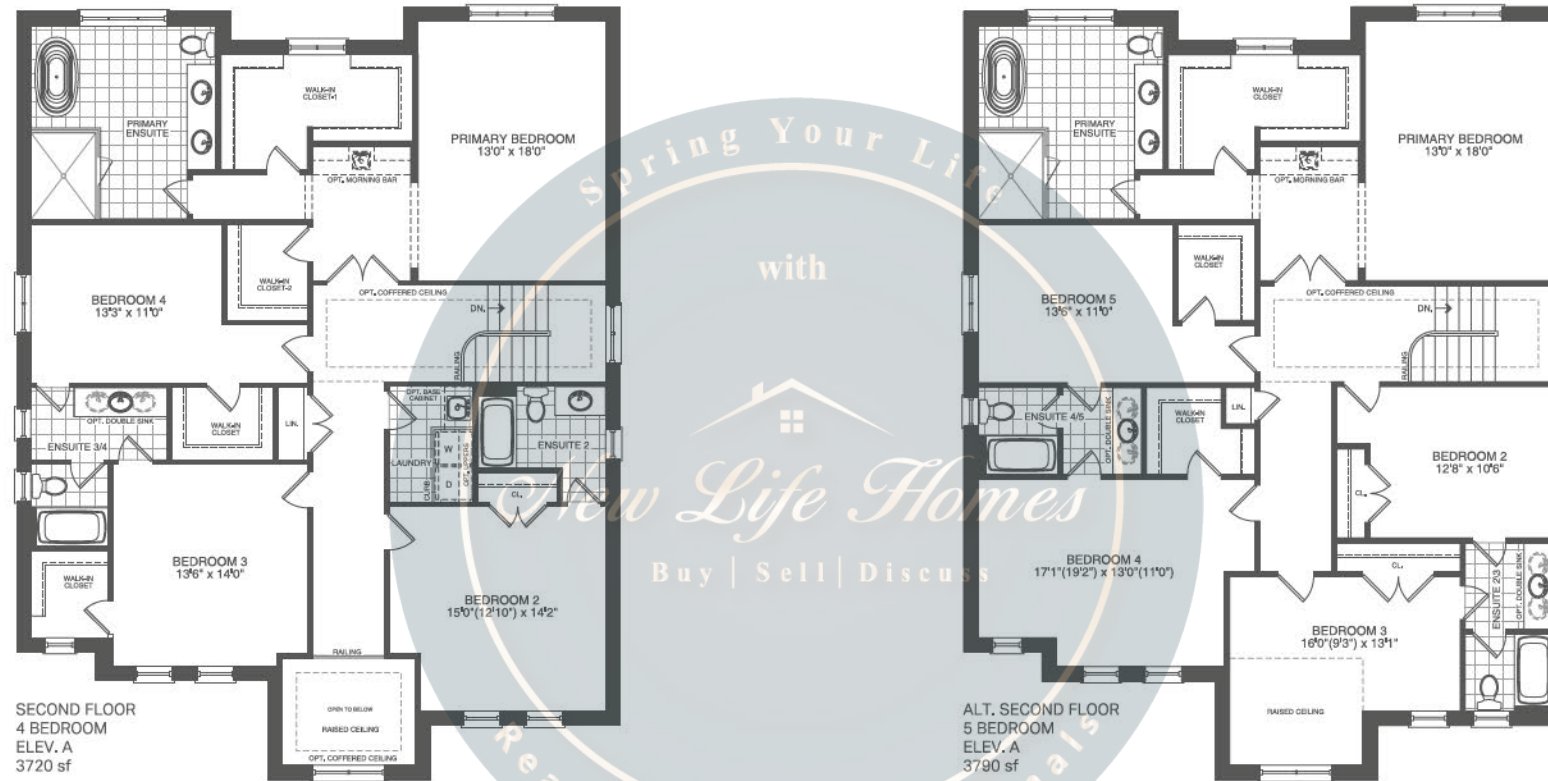
Elevation C 3,730 sq.



The floor plans, elevations, dimensions, specifications and architectural detailing shown are pre-construction plans only and may be changed or revised without notice including As may be necessitated by architectural controls and the construction process. All dimensions are approximate. Actual usable floor space may vary from the stated area. House may be reversed. Steps may vary at any exterior entrance. Illustrations are artist's concept only. Exterior railings to be installed only as required by grade notwithstanding any illustrations or plans. E. & O.E. NOV 17 2023



The floor plans, elevations, dimensions, specifications and architectural detailing shown are pre-construction plans only and may be changed or revised without notice including As may be necessitated by architectural controls and the construction process. All dimensions are approximate. Actual usable floor space may vary from the stated area. House may be reversed. Steps may vary at any exterior entrance. Illustrations are artist's concept only. Exterior railings to be installed only as required by grade notwithstanding any illustrations or plans. E & O.E. NOV 17 2023





Elevation C 3,760 sq.ft.



Elevation A 3,760 sq.ft.



Elevation A with Optional Loft 4,495 sq.ft.

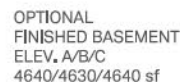


Elevation B 3,750 sq.ft.

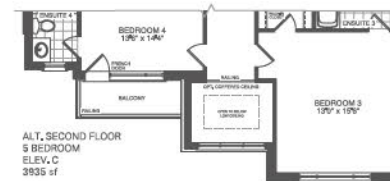
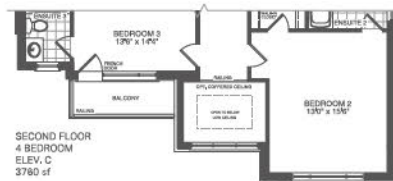
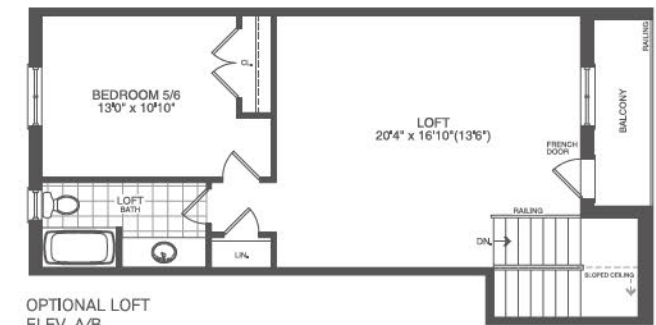
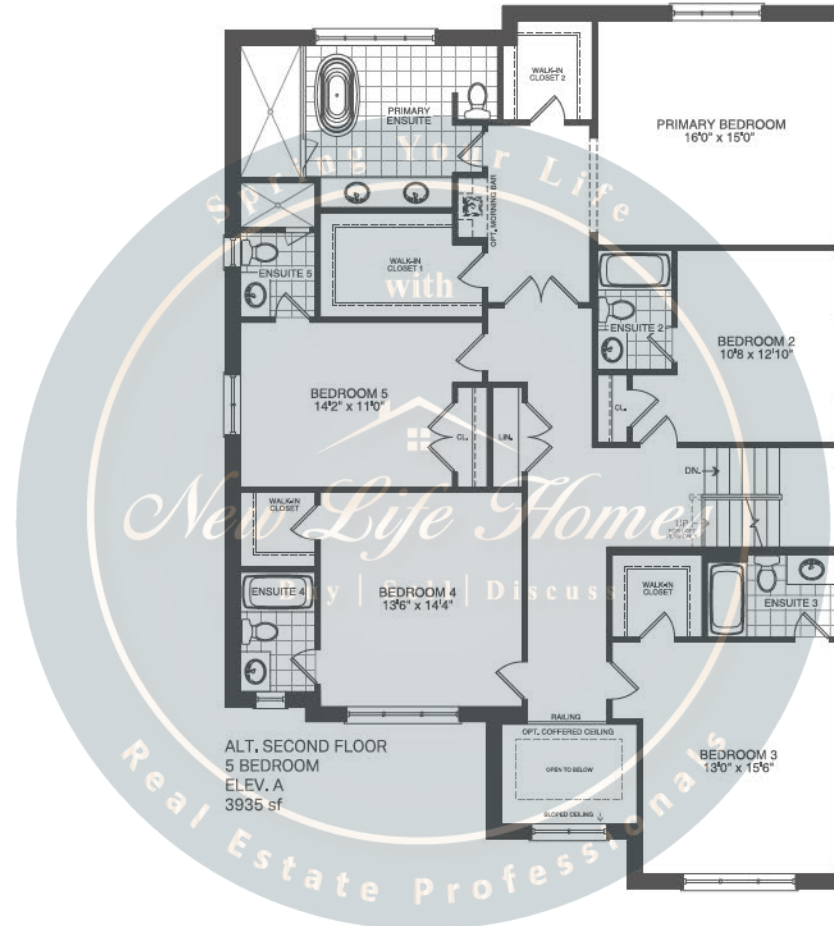
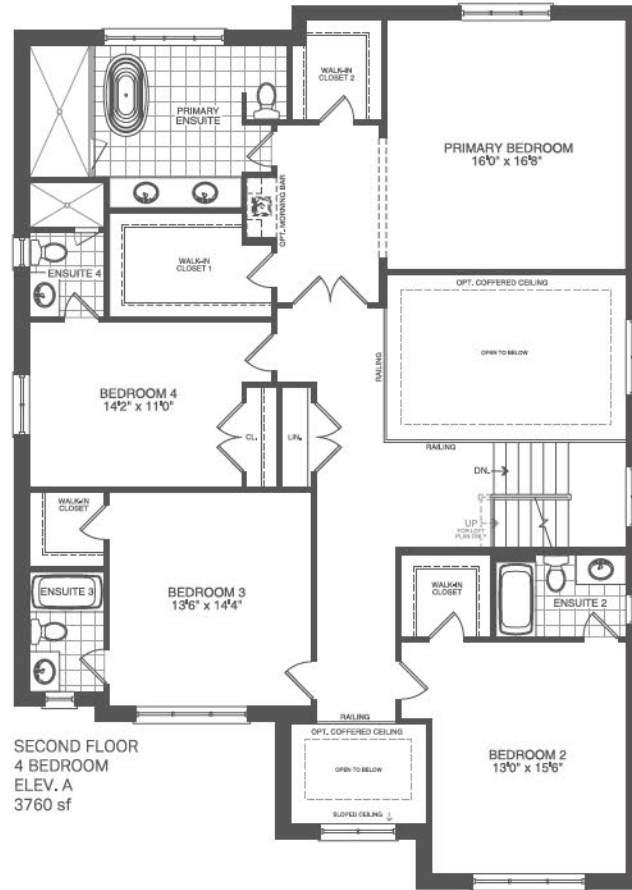


Elevation B with Optional Loft 4,485 sq.ft.





The floor plans, elevations, dimensions, specifications and architectural detailing shown are pre-construction plans only and may be changed or revised without notice as may be necessitated by architectural controls and the construction process. All dimensions are approximate. Actual usable floor space may vary from the stated area. House may be reversed. Steps may vary at any exterior entrance. Illustrations are artist's concept only. Exterior railings to be installed only as required by grade notwithstanding any illustrations or plans. E & O.E. DEC 6 2023





Elevation A 3,940 sq.ft.

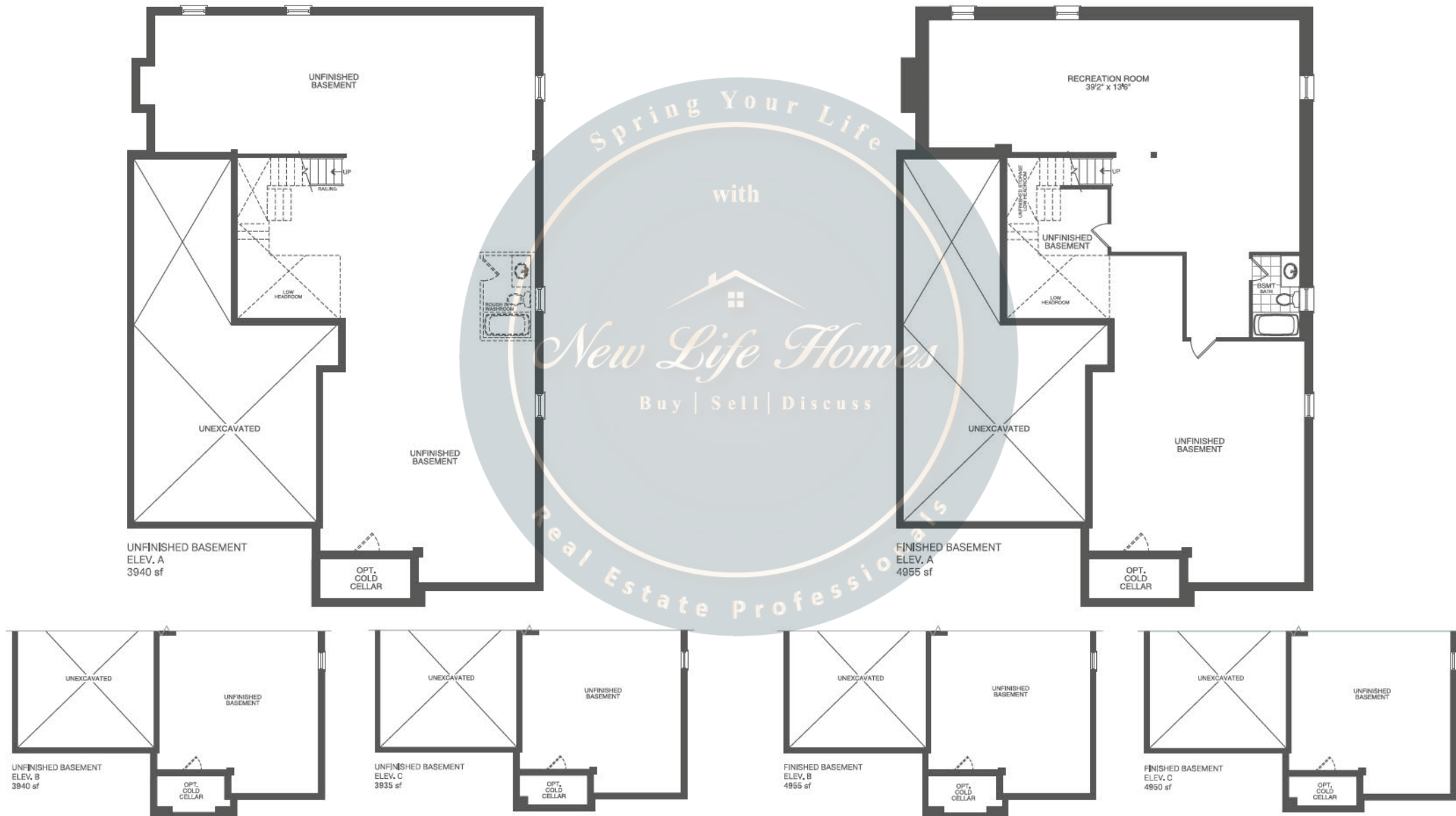


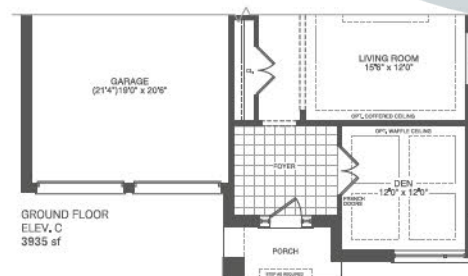
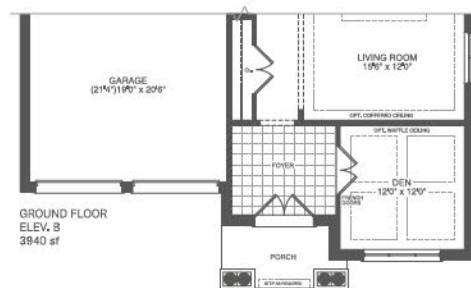
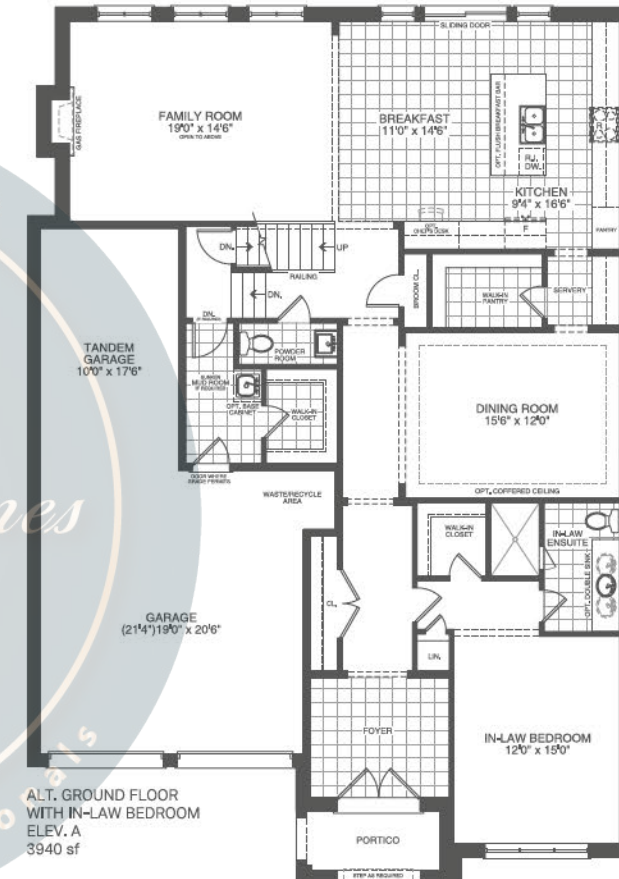
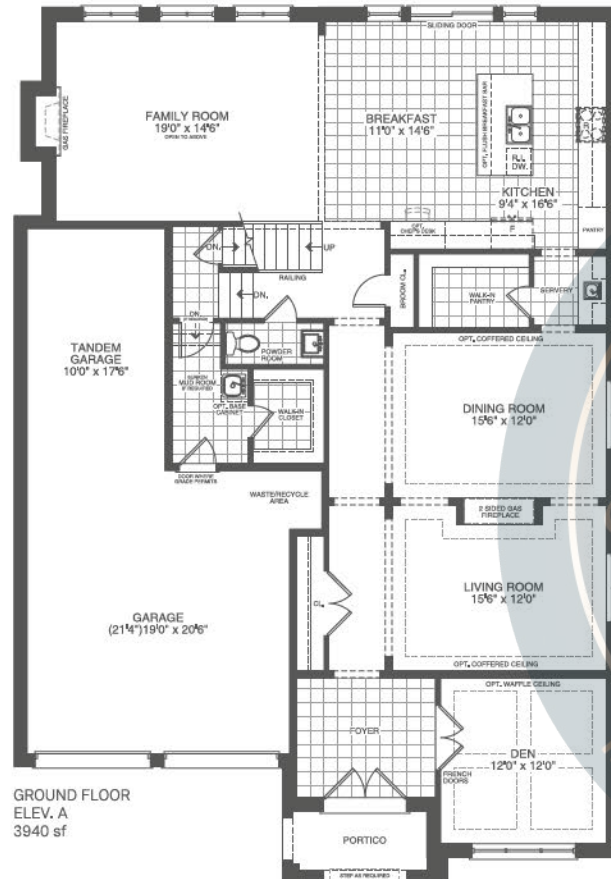
Elevation B 3,940 sq.ft.



Elevation C 3,935 sq.ft.







The floor plans, elevations, dimensions, specifications and architectural detailing shown are pre-construction plans only and may be changed or revised without notice including As may be necessitated by architectural controls and the construction process. All dimensions are approximate. Actual usable floor space may vary from the stated area. House may be reversed. Steps may vary at any exterior entrance. Illustrations are artist's concept only. Exterior railings to be installed only as required by grade notwithstanding any illustrations or plans. E & O.E. NOV 17 2023





Elevation C 4,400 sq.ft.



Elevation A 4,390 sq.ft.



Elevation A with Optional Loft 5,165 sq.ft.



Elevation B 4,355 sq.ft.



Elevation B with Optional Loft 5,130 sq.ft.



