

HEARTWOOD

BY CACHET

THE PERIWINKLE

ELEV. A | 2097 SQ FT

ELEV. B | 2098 SQ FT

ELEV. C | 2106 SQ FT

Spring Y
with
36'
COLLECTION

New Life Homes

Buy | Sell | Invest

A Real Estate Business Center



Artist's Concept

ELEVATION B



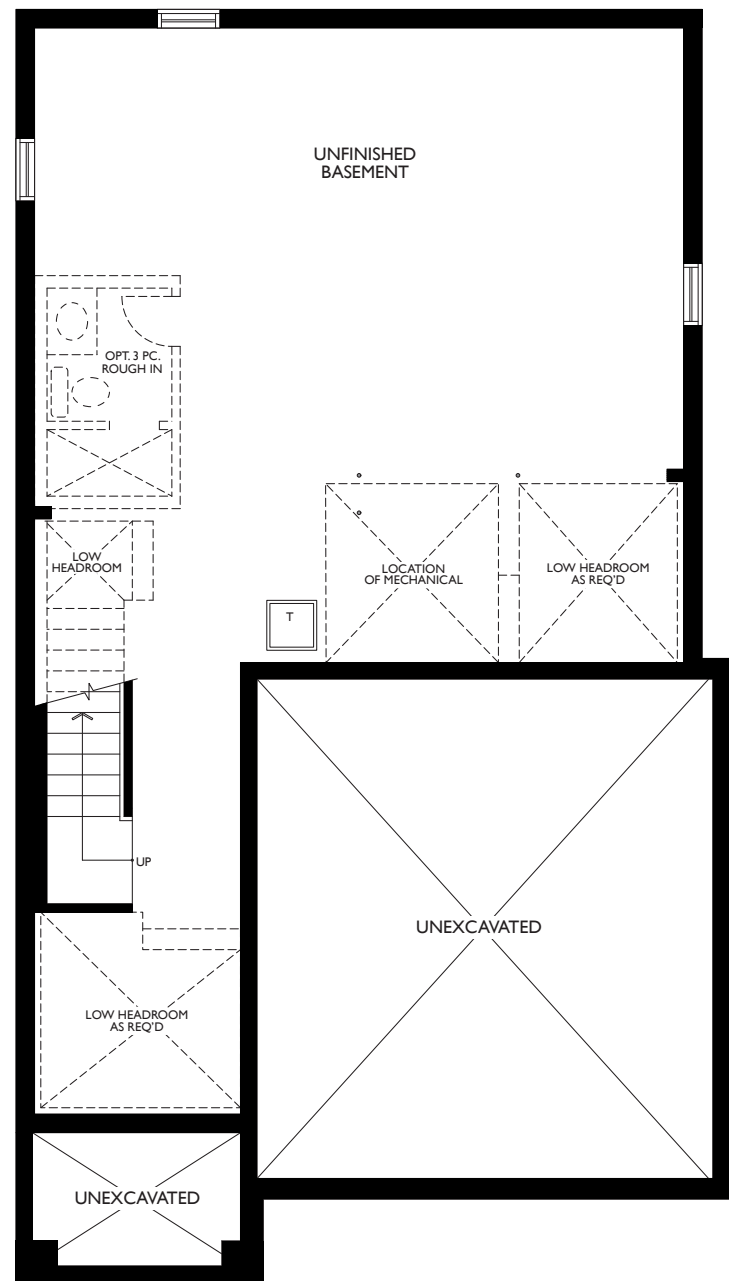
Artist's Concept

ELEVATION A

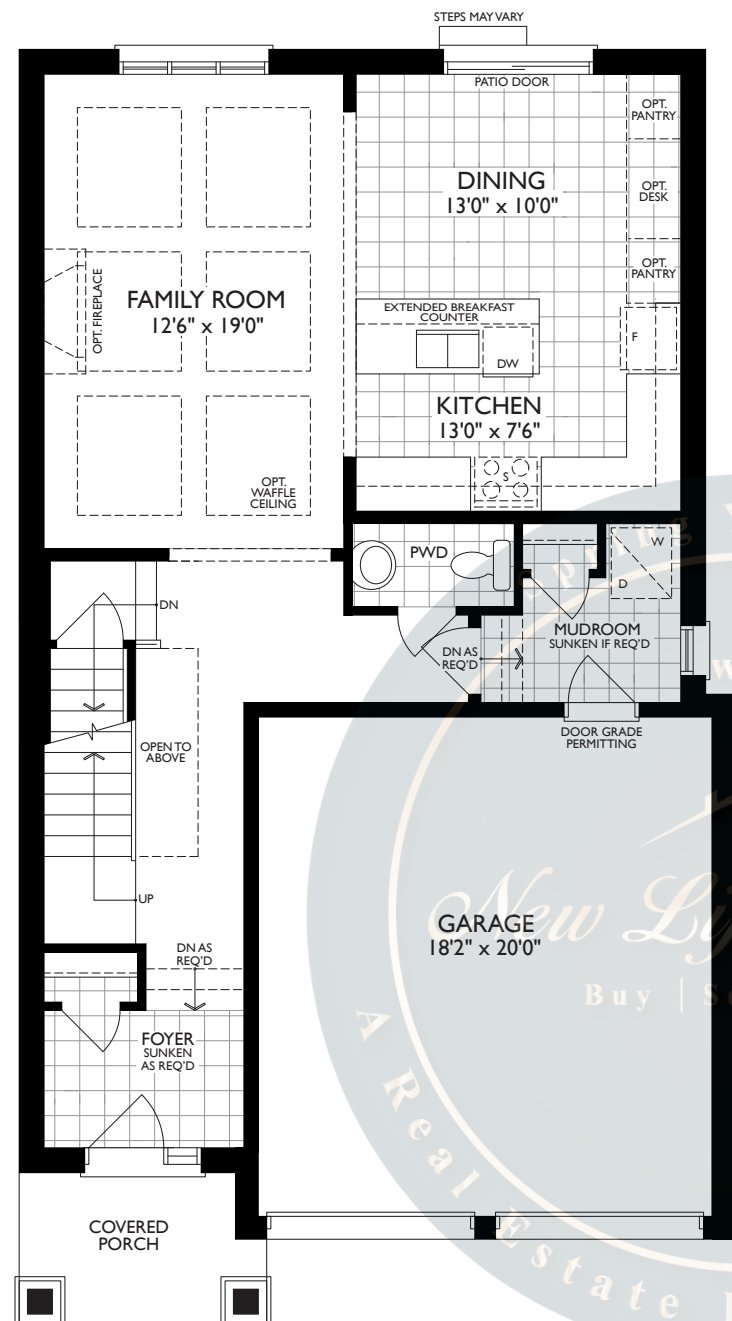


Artist's Concept

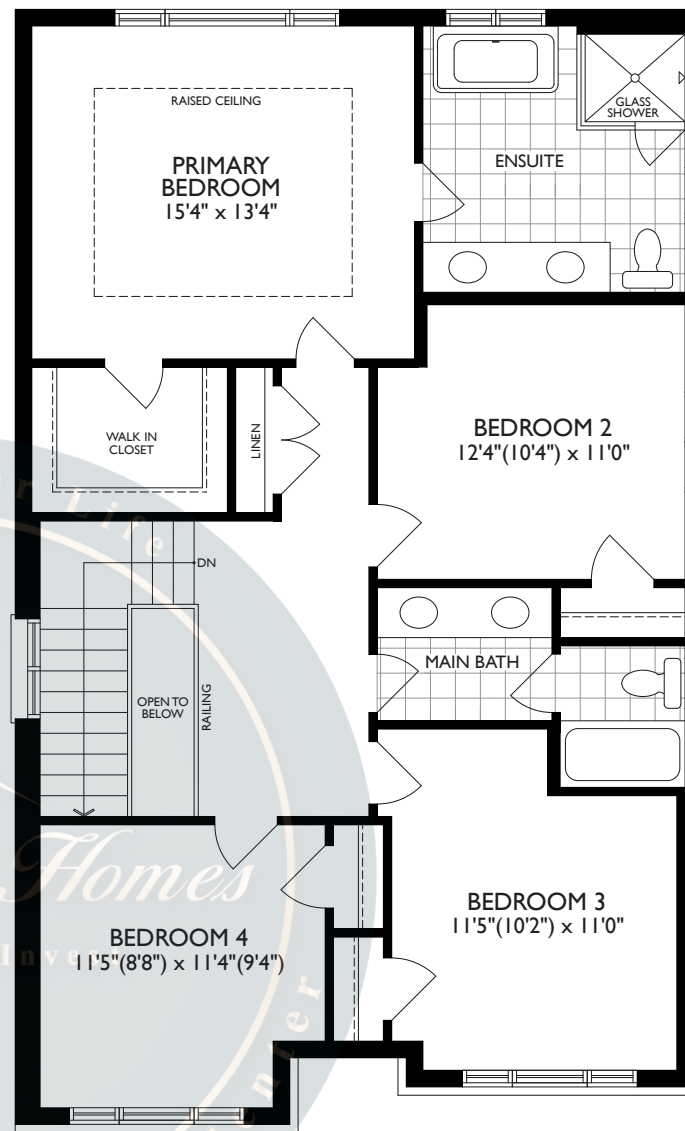
ELEVATION C



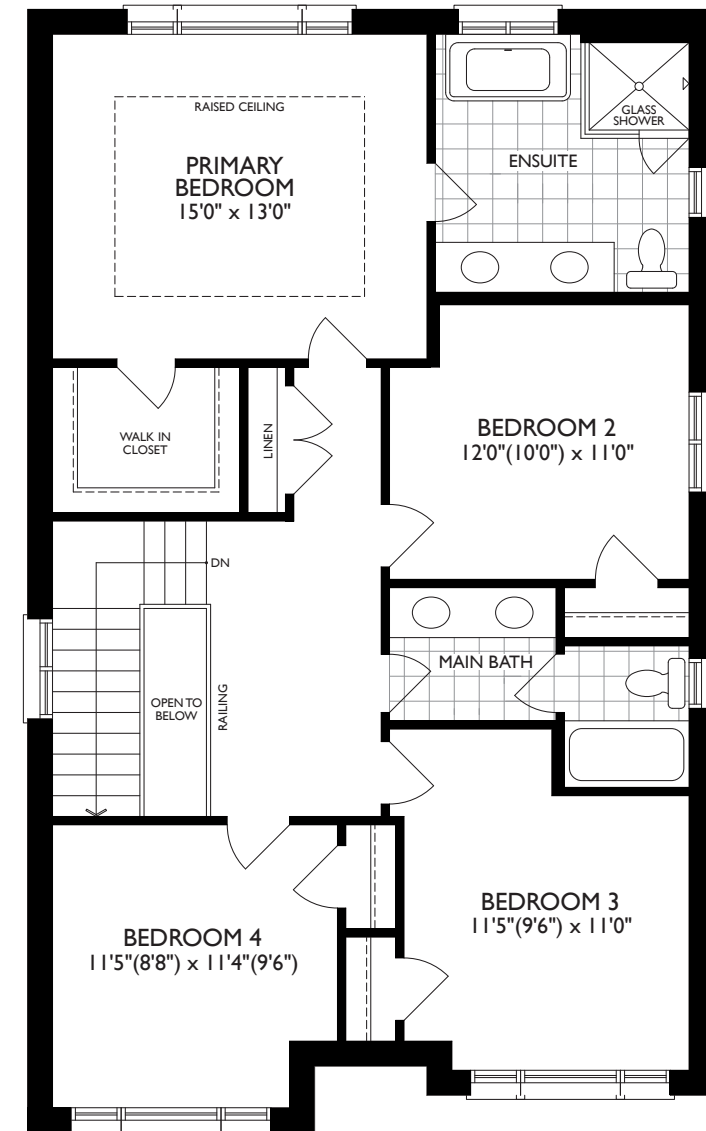
LOWER LEVEL - ELEV. A, B & C



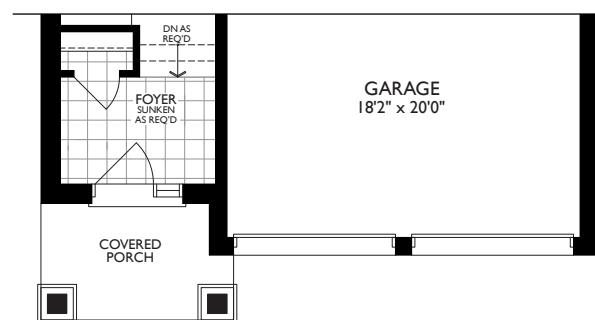
MAIN LEVEL - ELEV. A



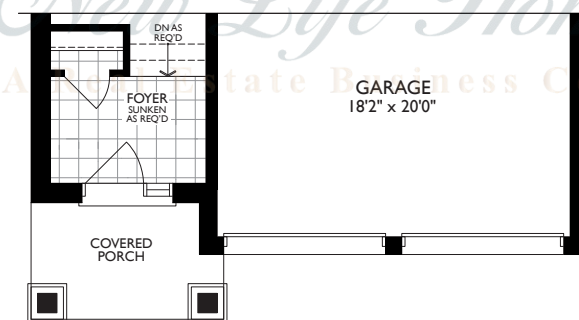
UPPER LEVEL - ELEV. A



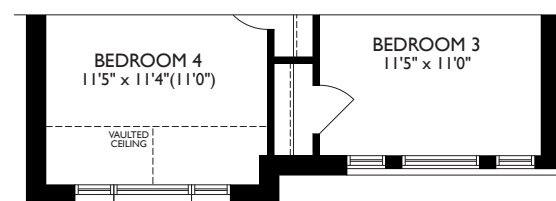
UPPER LEVEL - ELEV. B



MAIN LEVEL - ELEV. B



MAIN LEVEL - ELEV. C



UPPER LEVEL - ELEV. C

36' COLLECTION

THE PERIWINKLE

ELEV. A | 2097 SQ FT • ELEV. B | 2098 SQ FT • ELEV. C | 2106 SQ FT

Dimensions, specifications, layouts and materials are approximate only, may vary, and are subject to change as provided in the Agreement of Purchase & Sale. All representative square footage include applicable finished lower level and open to below and above areas. Square footage varies according to architectural style. Plans may be reversed. Illustrations are artist's concept. Elevation C partial floorplans apply to Elevation B full floor plan dimensions. E. & O.E. March 2024. 3601



Call us: 647-215-2315 | Email: Business@newlifehomes.ca

HEARTWOOD

BY CACHET

THE VIOLET

ELEV. A | 2358 SQ FT

ELEV. B | 2365 SQ FT

ELEV. C | 2360 SQ FT

36'
COLLECTION

New Life Homes

Buy | Sell | Invest



Artist's Concept

ELEVATION B



Artist's Concept

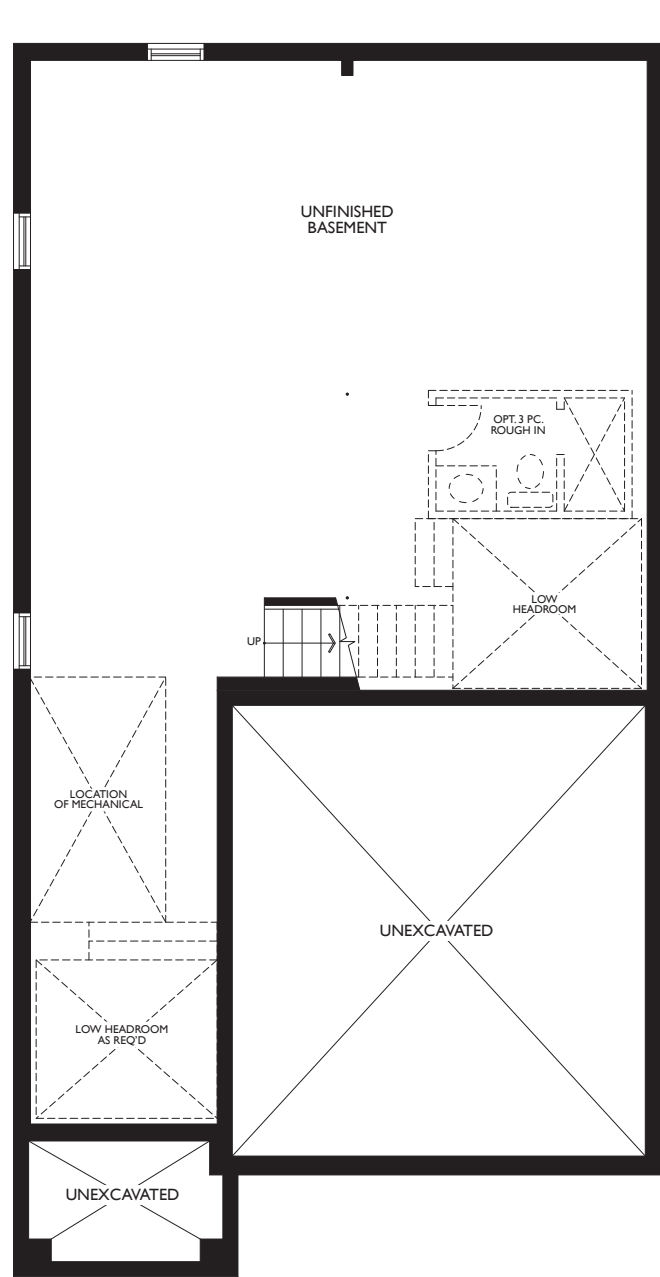
ELEVATION A



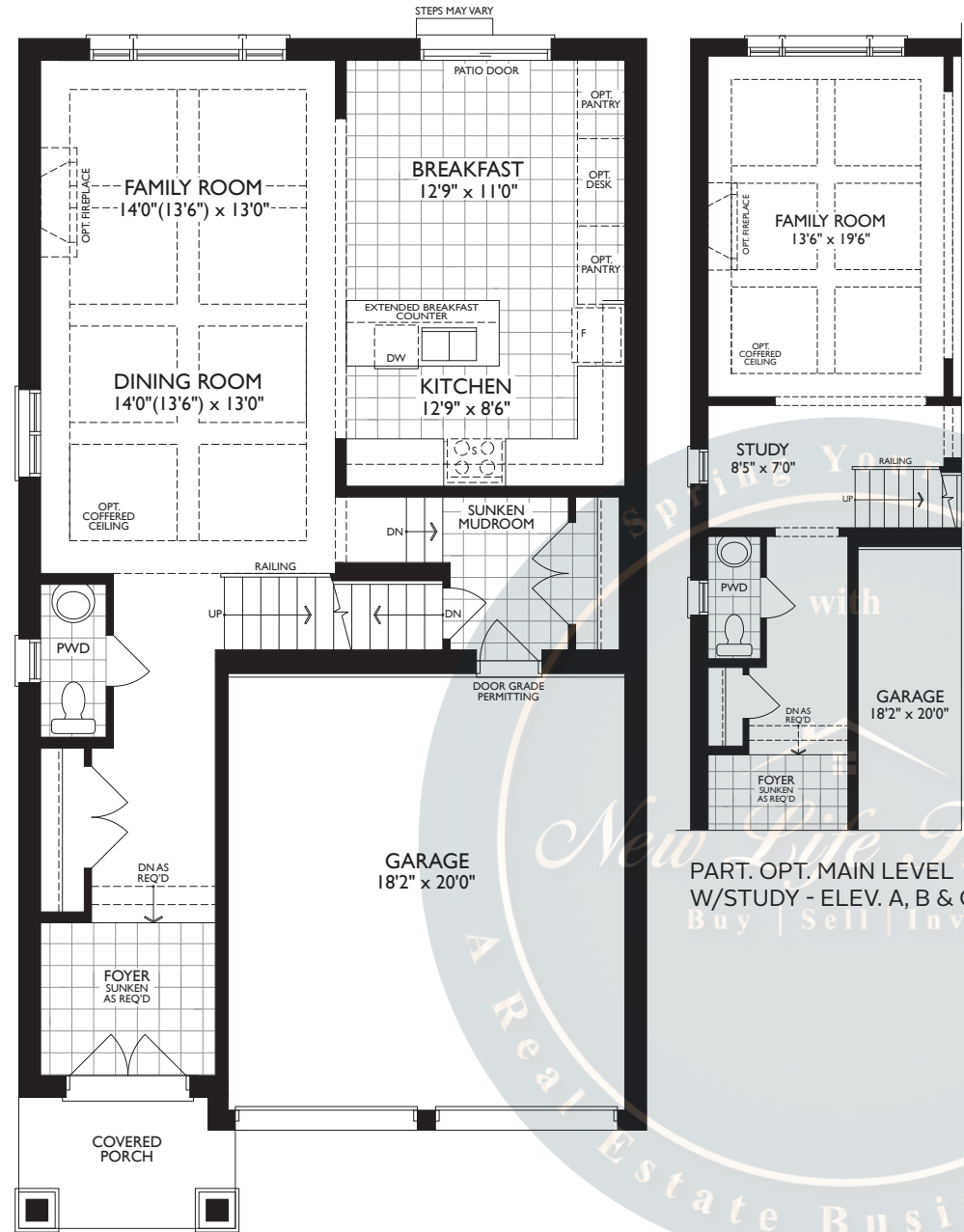
Artist's Concept

ELEVATION C

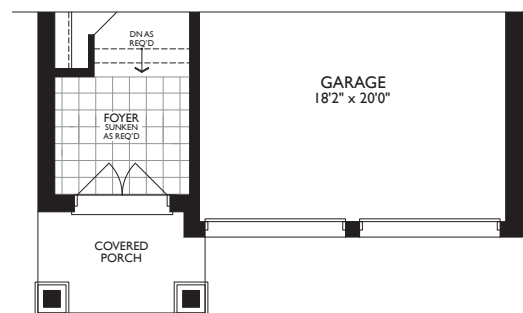




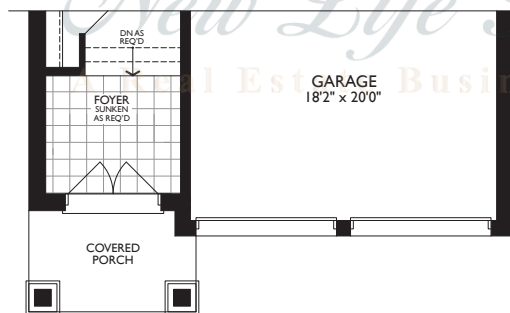
LOWER LEVEL - ELEV. A, B & C



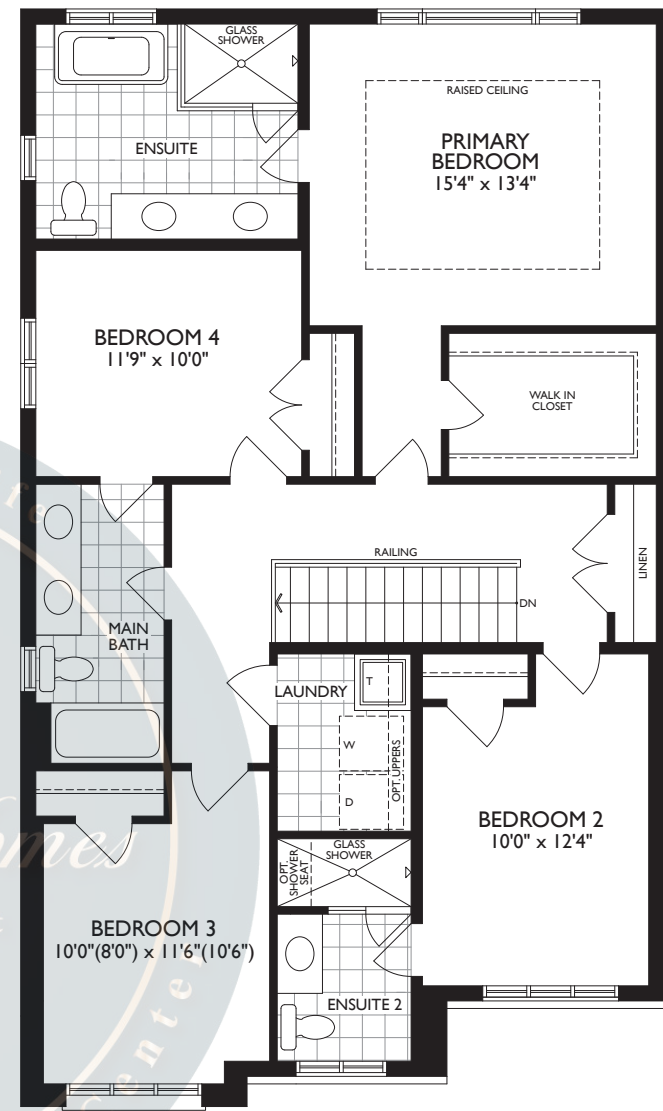
MAIN LEVEL - ELEV. A



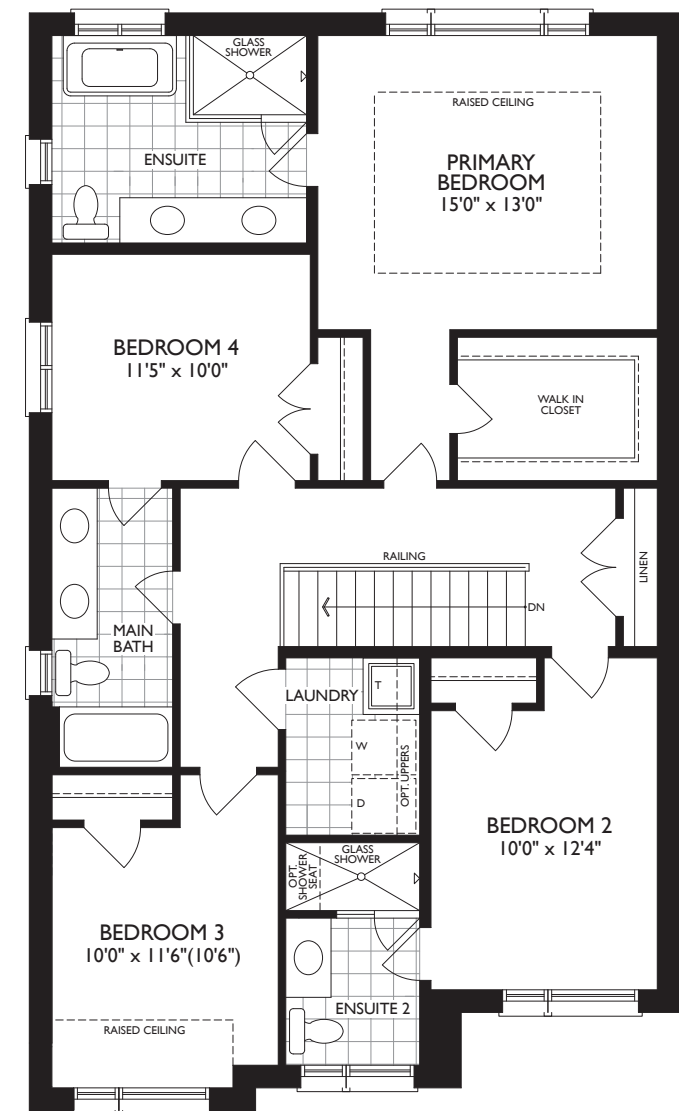
PART. MAIN LEVEL - ELEV. B



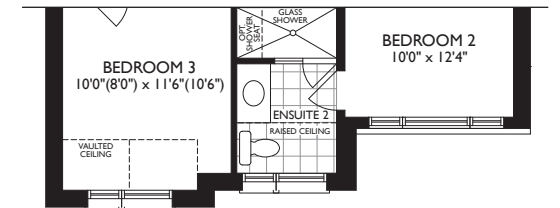
PART. MAIN LEVEL - ELEV. C



UPPER LEVEL - ELEV. A



UPPER LEVEL - ELEV. B



PART. UPPER LEVEL - ELEV. C

36' THE VIOLET

ELEV. A | 2358 SQ FT • ELEV. B | 2365 SQ FT • ELEV. C | 2360 SQ FT

Dimensions, specifications, layouts and materials are approximate only, may vary, and are subject to change as provided in the Agreement of Purchase & Sale. All representative square footage include applicable finished lower level and open to below and above areas. Square footage varies according to architectural style. Plans may be reversed. Illustrations are artist's concept. Elevation C partial floorplans apply to Elevation B full floor plan dimensions. E. & O.E. March 2024. 3602



Call us: 647-215-2315 | Email: Business@newlifehomes.ca

HEARTWOOD

BY CACHET

THE MULBERRY

ELEV. A | 2605 SQ FT

ELEV. B | 2589 SQ FT

ELEV. C | 2609 SQ FT

Spring Y
with
36'
COLLECTION

New Life Homes

Buy | Sell | Invest

A Real Estate
Business Center



Artist's Concept

ELEVATION B



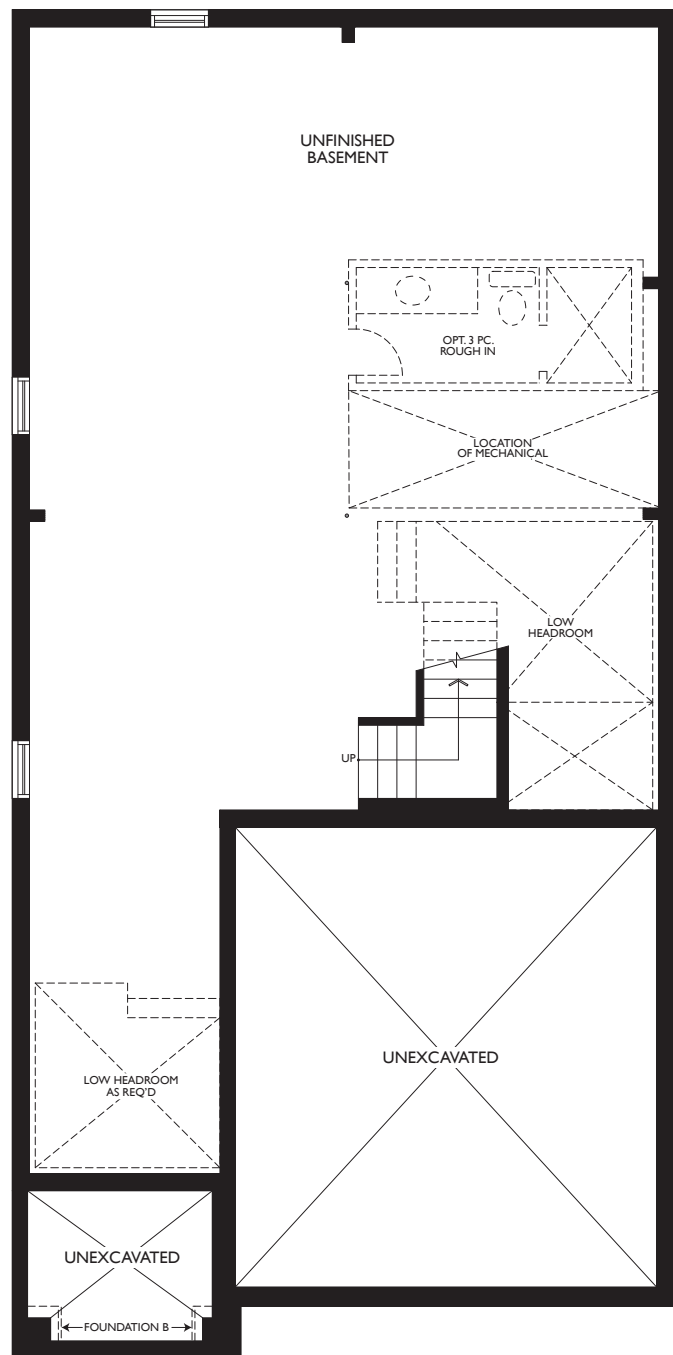
Artist's Concept

ELEVATION A

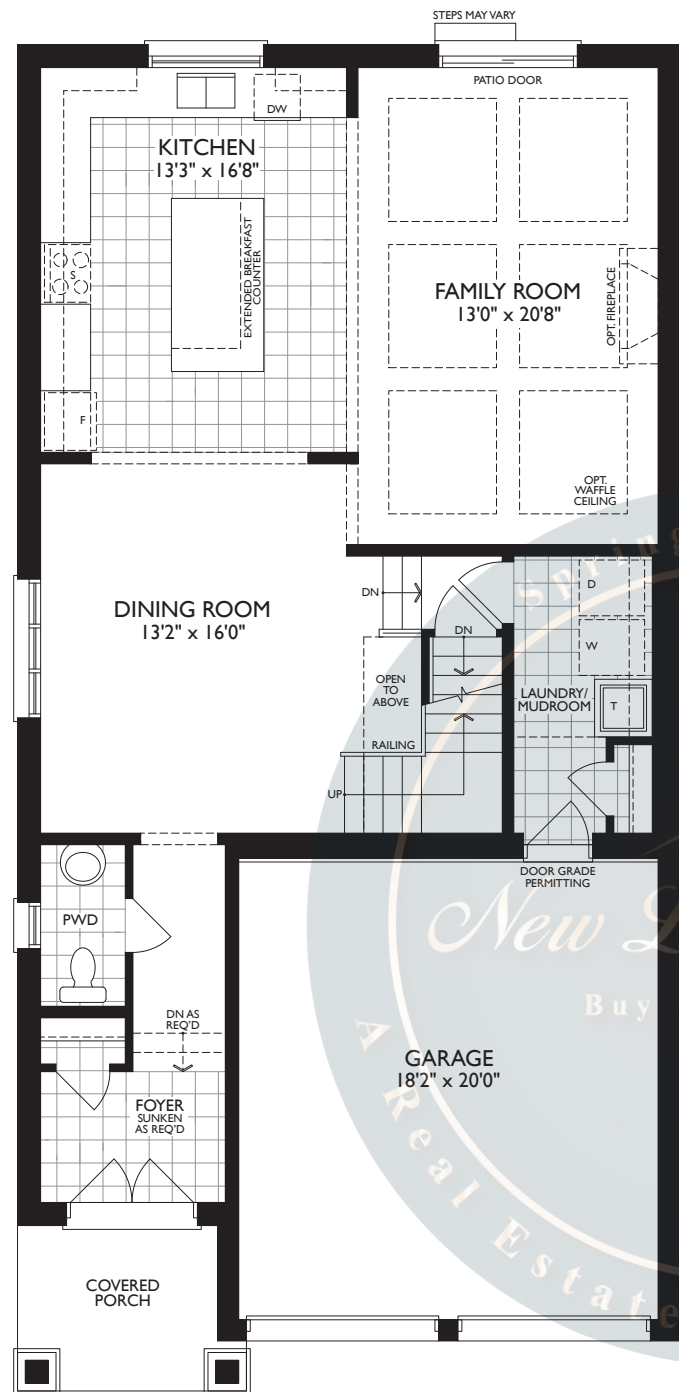


Artist's Concept

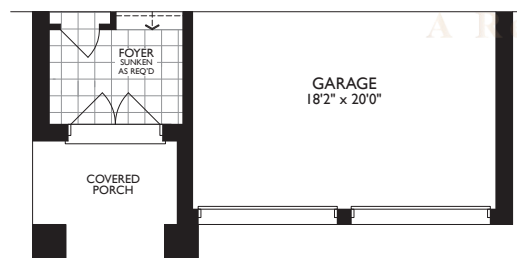
ELEVATION C



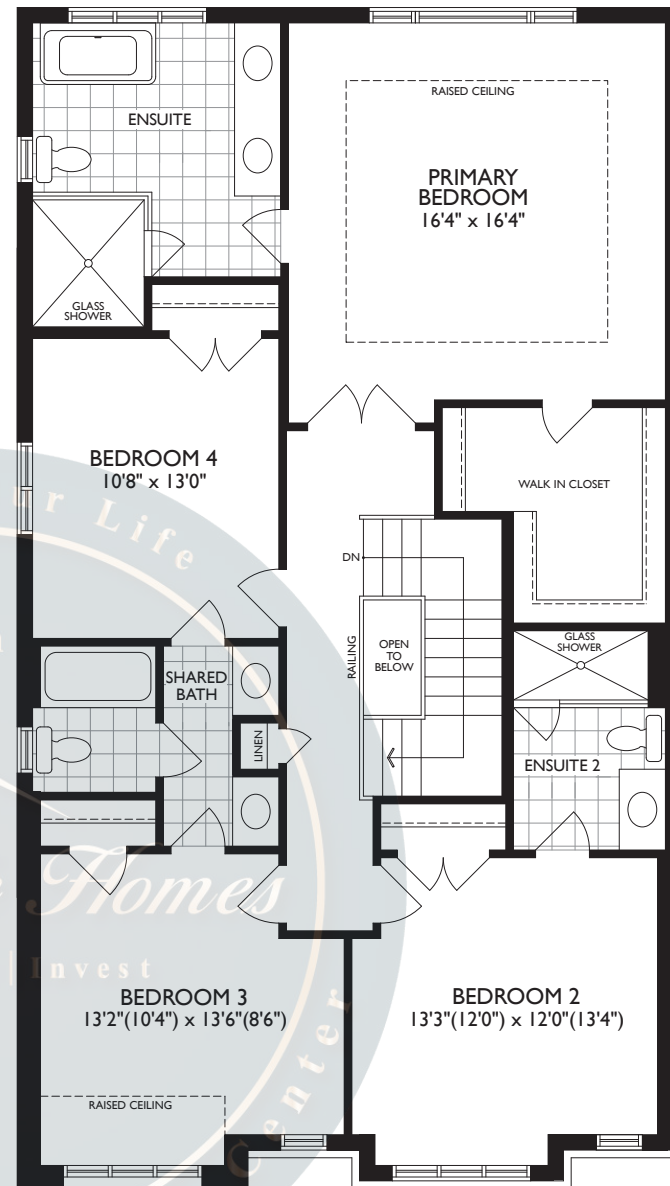
LOWER LEVEL - ELEV. A, B & C



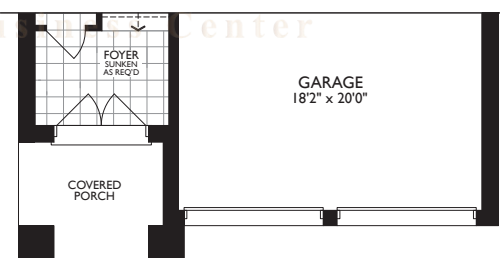
MAIN LEVEL - ELEV. A



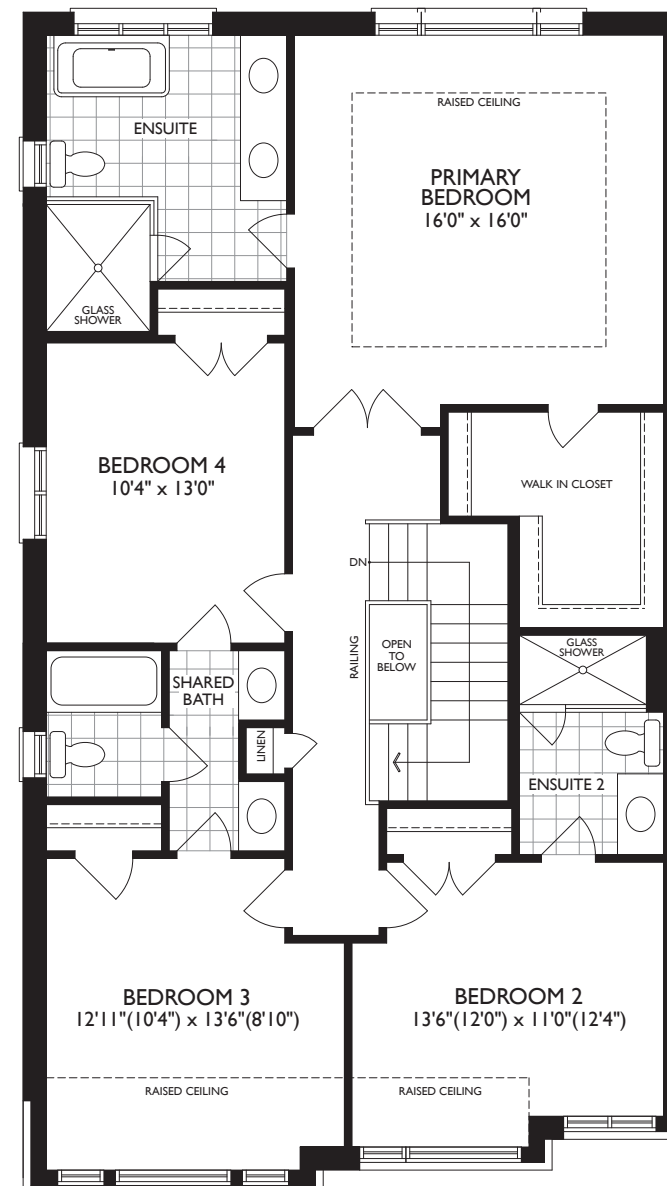
PART. MAIN LEVEL - ELEV. B



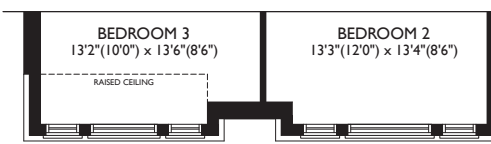
UPPER LEVEL - ELEV. A



PART. UPPER LEVEL - ELEV. C



UPPER LEVEL - ELEV. B



PART. UPPER LEVEL - ELEV. C

New Life Homes
A Real Estate Business Center

36' THE MULBERRY

COLLECTION ELEV. A | 2605 SQ FT • ELEV. B | 2589 SQ FT • ELEV. C | 2609 SQ FT

Dimensions, specifications, layouts and materials are approximate only, may vary, and are subject to change as provided in the Agreement of Purchase & Sale. All representative square footage include applicable finished lower level and open to below and above areas. Square footage varies according to architectural style. Plans may be reversed. Illustrations are artist's concept. Elevation C partial floorplans apply to Elevation B full floor plan dimensions. E. & O.E. March 2024. 3603



Call us: 647-215-2315 | Email: Business@newlifelifehomes.ca

HEARTWOOD

BY CACHET

THE INDIGO

ELEV. A & B | 2793 SQ FT

ELEV. C | 2821 SQ FT

36'
COLLECTION

New Life Homes

Buy | Sell | Invest

A Real Estate Business Center



Artist's Concept

ELEVATION B



Artist's Concept

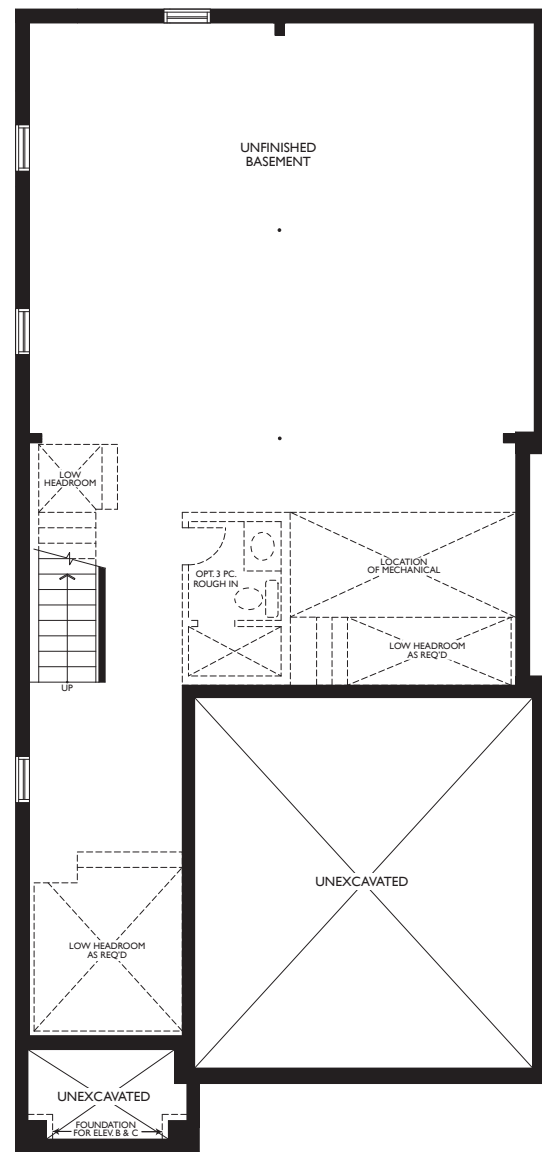
ELEVATION A



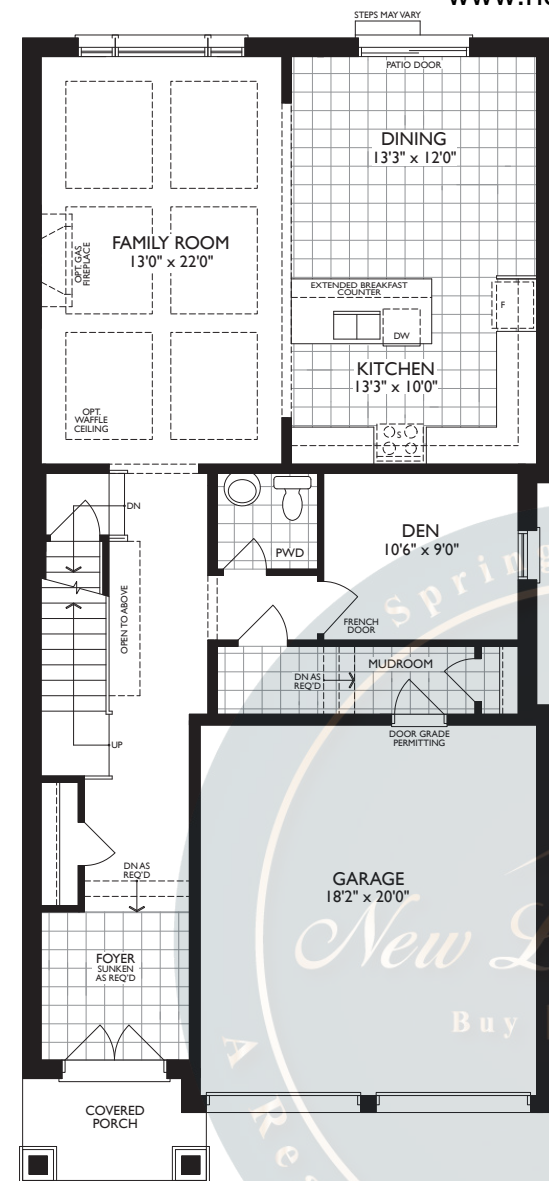
Artist's Concept

ELEVATION C

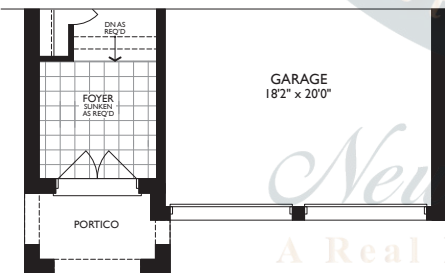




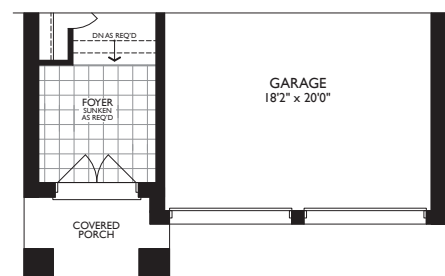
LOWER LEVEL - ELEV. A, B & C



MAIN LEVEL - ELEV. A



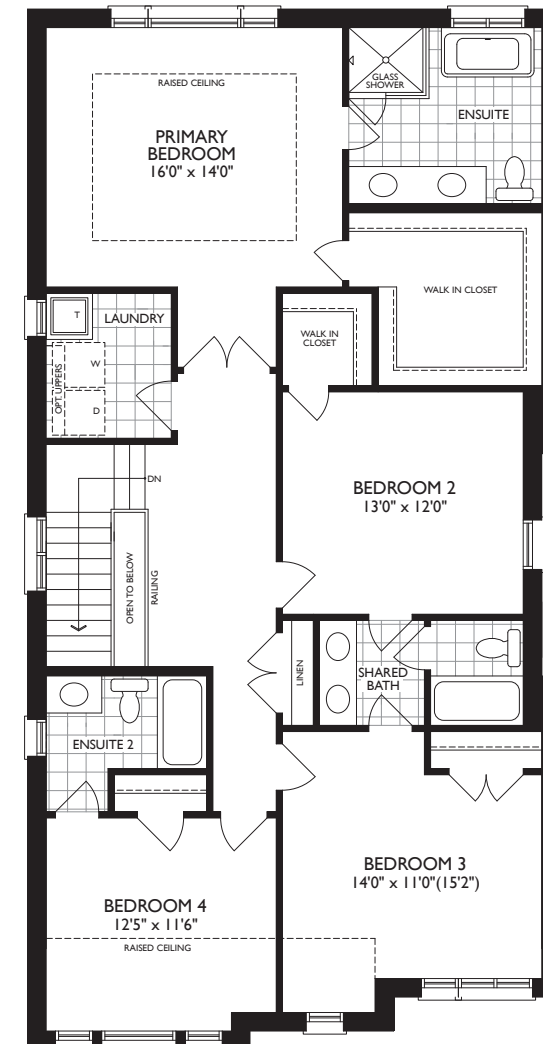
PART. MAIN LEVEL - ELEV. B



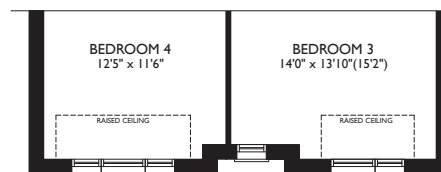
PART. MAIN LEVEL - ELEV. C



UPPER LEVEL - ELEV. A



UPPER LEVEL - ELEV. B



PART. UPPER LEVEL - ELEV. C

36' COLLECTION

THE INDIGO

ELEV. A & B | 2793 SQ FT

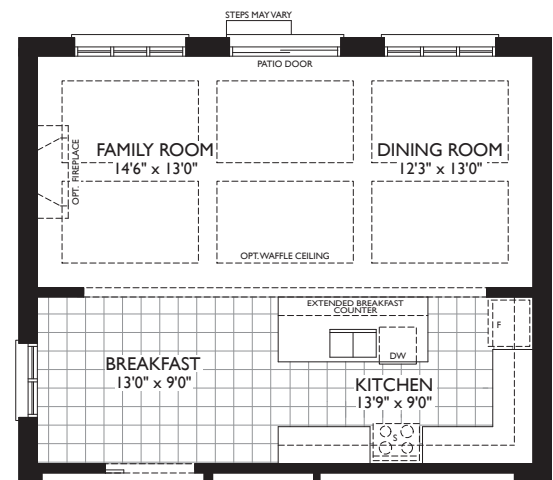
ELEV. C | 2821 SQ FT

Dimensions, specifications, layouts and materials are approximate only, may vary, and are subject to change as provided in the Agreement of Purchase & Sale. All representative square footage include applicable finished lower level and open to below and above areas. Square footage varies according to architectural style. Plans may be reversed. Illustrations are artist's concept. Elevation C partial floorplans apply to Elevation B full floor plan dimensions. E. & O.E. March 2024. 3604

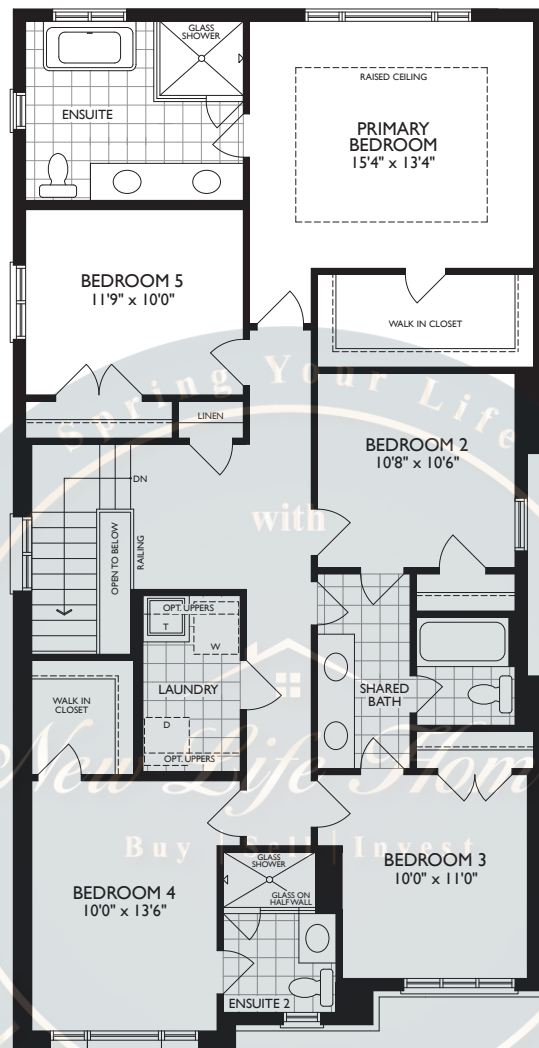


Call us: 647-215-2315 | Email: Business@newlifehomes.ca

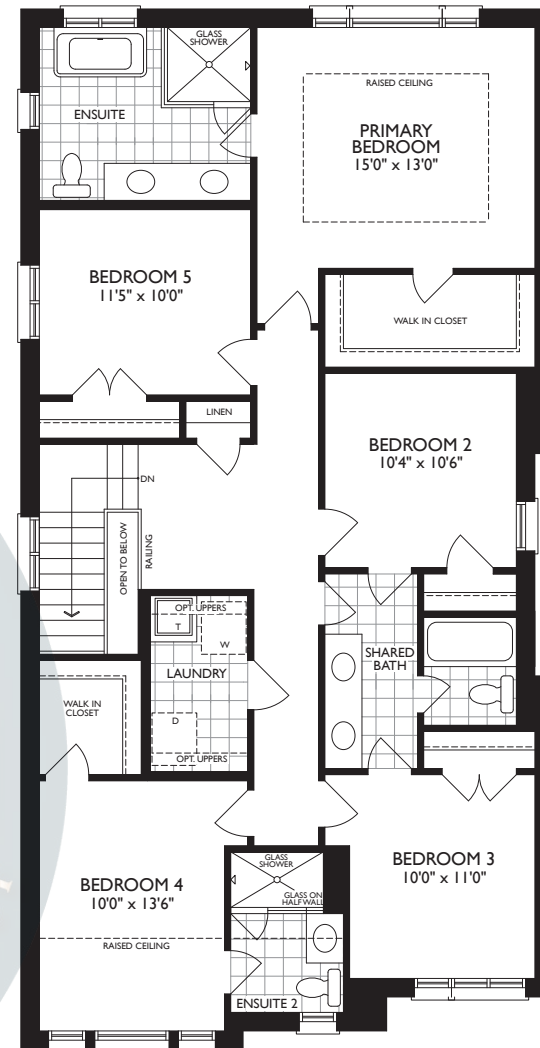
OPTIONAL FLOORPLANS



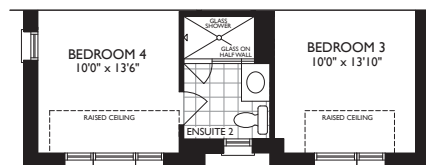
OPT. MAIN LEVEL - ELEV. A, B & C



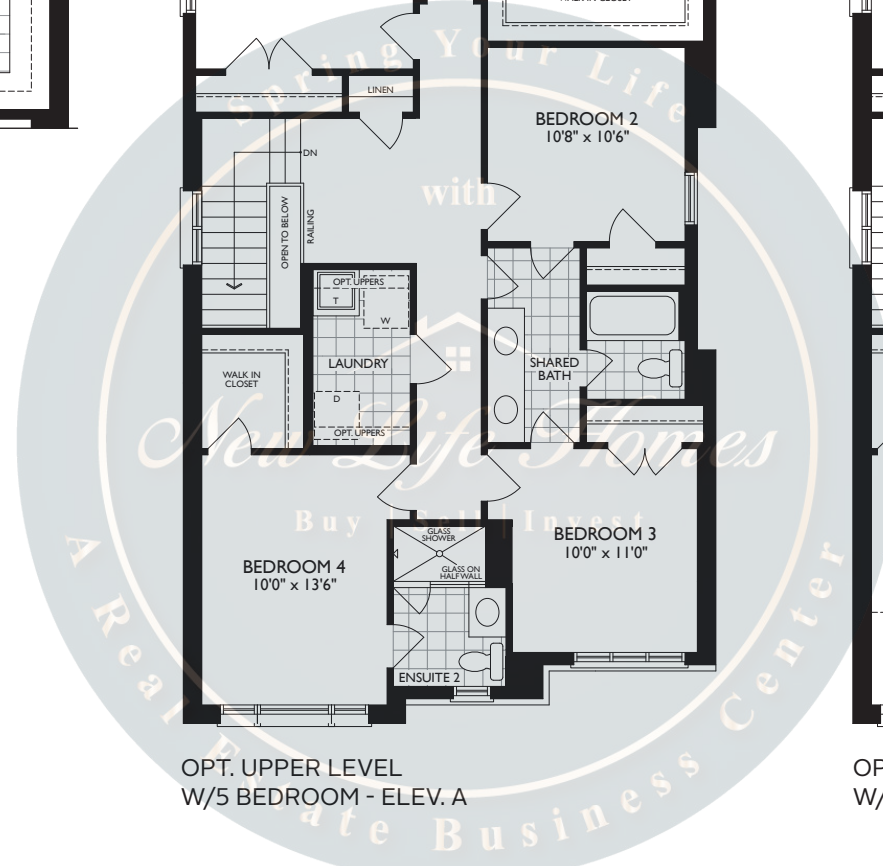
OPT. UPPER LEVEL
W/5 BEDROOM - ELEV. A



OPT. UPPER LEVEL
W/5 BEDROOM - ELEV. B



OPT. UPPER LEVEL
W/5 BEDROOM - ELEV. C



New Life Homes
A Real Estate Business Center

36'
COLLECTION

THE INDIGO
ELEV. A & B | 2793 SQ FT
ELEV. C | 2821 SQ FT

Dimensions, specifications, layouts and materials are approximate only, may vary, and are subject to change as provided in the Agreement of Purchase & Sale. All representative square footage include applicable finished lower level and open to below and above areas. Square footage varies according to architectural style. Plans may be reversed. Illustrations are artist's concept. Elevation C partial floorplans apply to Elevation B full floor plan dimensions. E. & O.E. March 2024. 3604



Call us: 647-215-2315 | Email: Business@newlifehomes.ca

HEARTWOOD

BY CACHET

THE THISTLE

ELEV. A | 2443 SQ FT

ELEV. B | 2435 SQ FT

ELEV. C | 2433 SQ FT

OPT. REC. ROOM | 483 SQ FT

Spring Y
with
36'
COLLECTION

New Life Homes

Buy | Sell | Invest

A Real Estate B



ELEVATION B

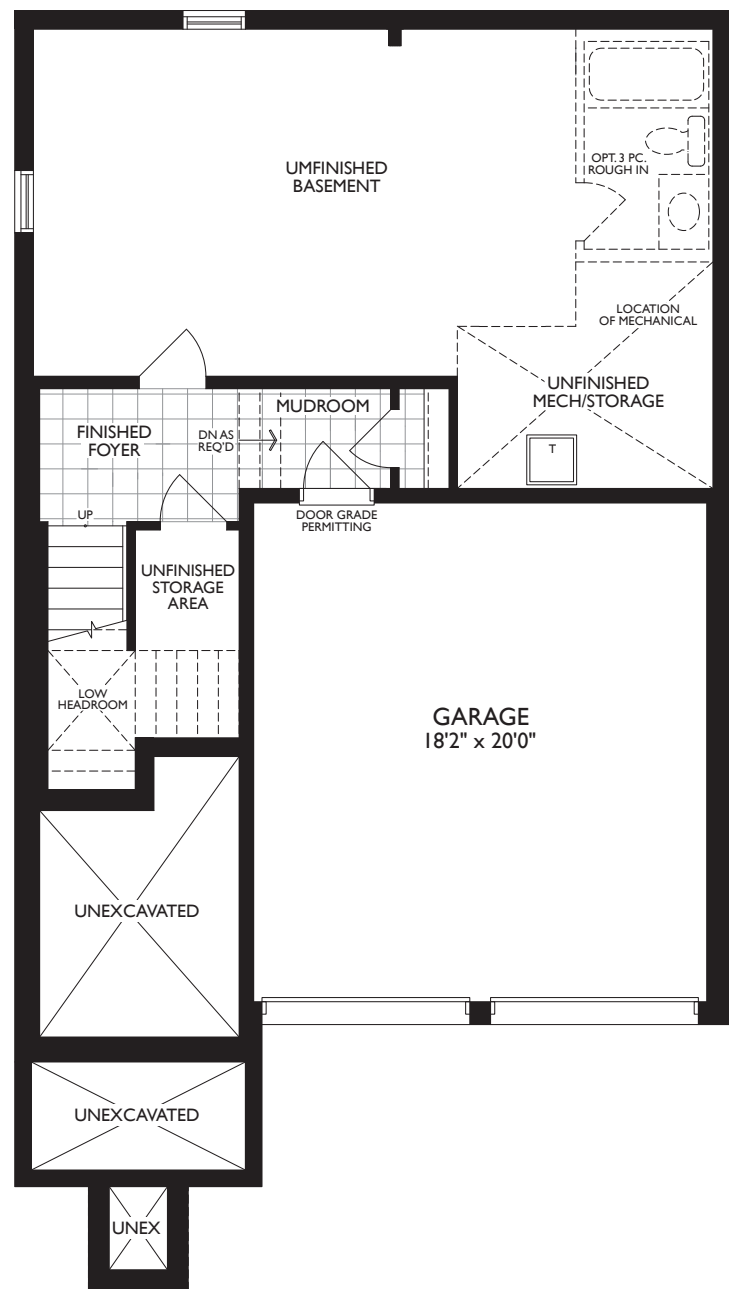


ELEVATION A

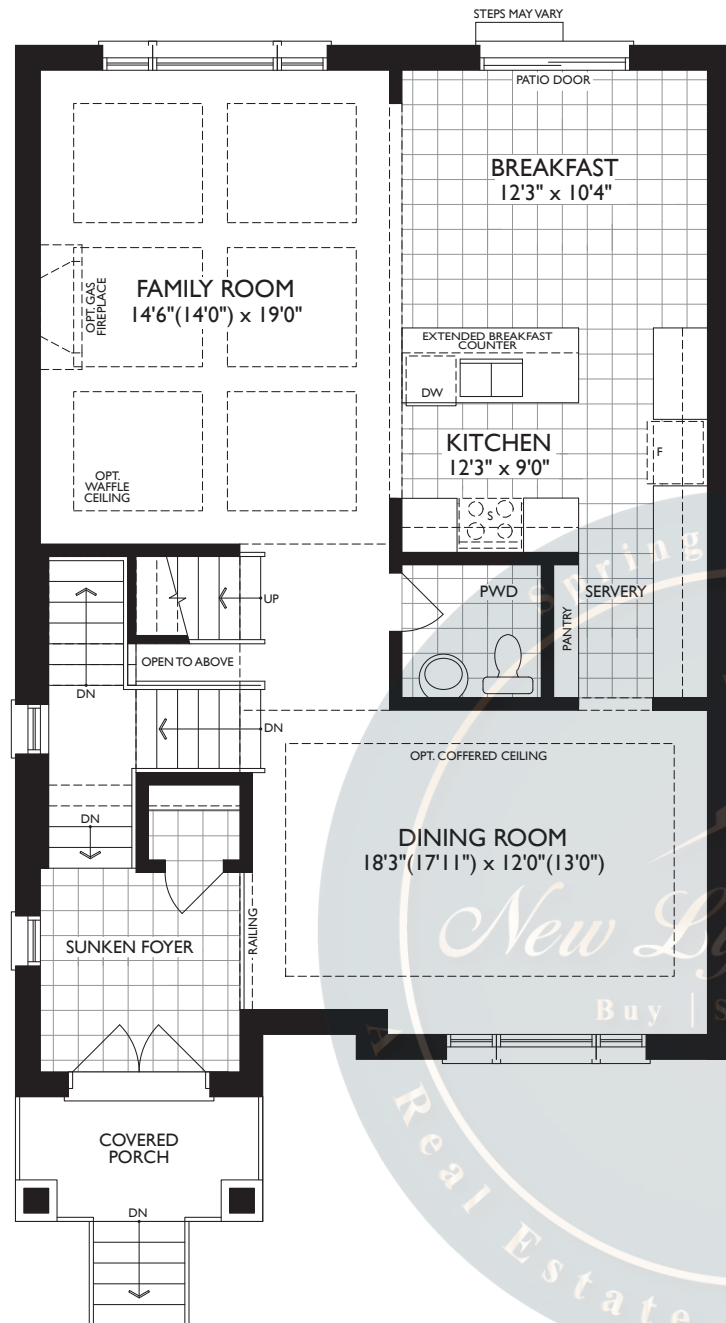


ELEVATION C

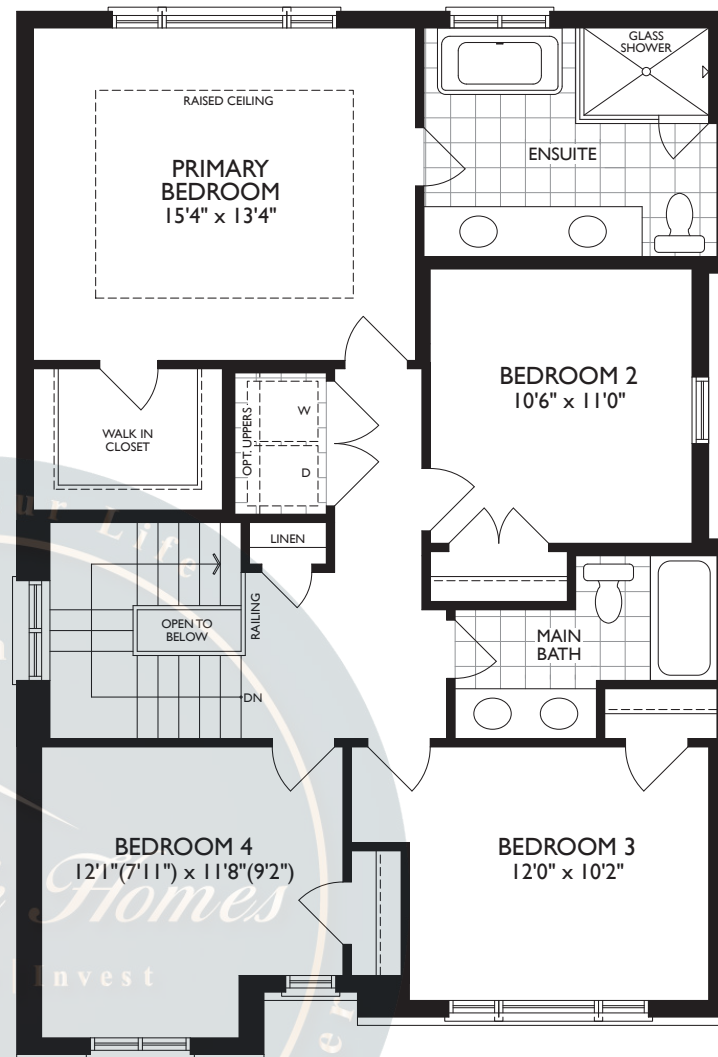




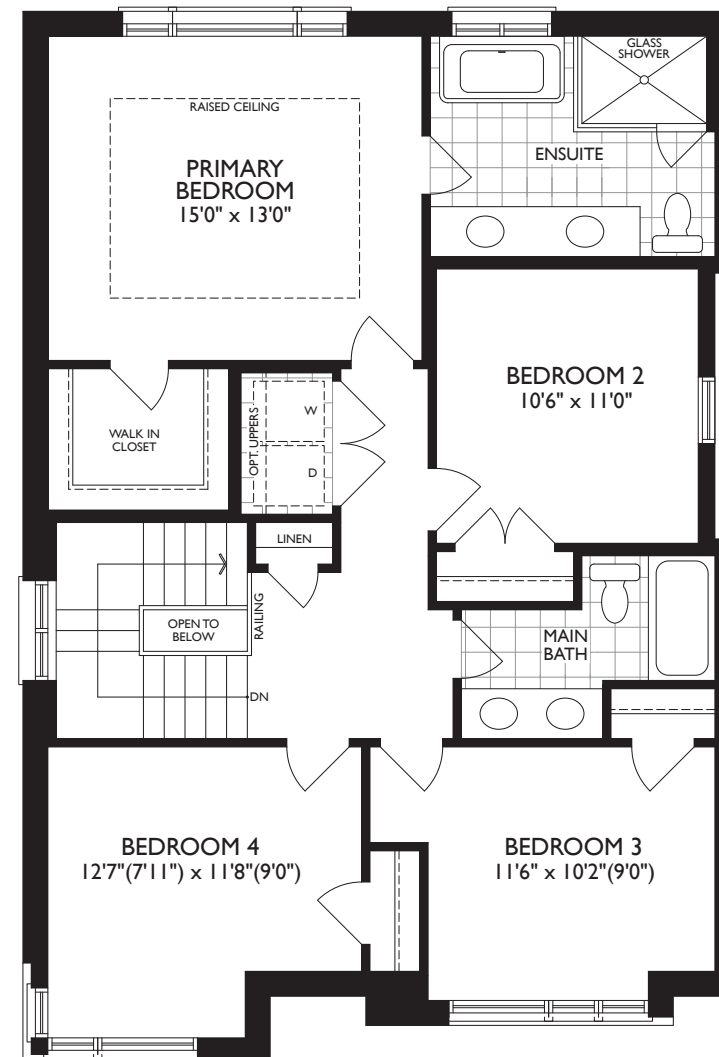
GROUND LEVEL - ELEV. A, B & C



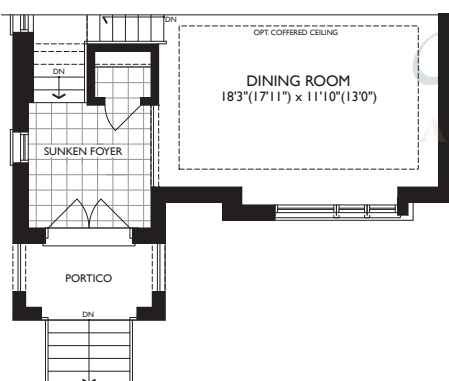
MAIN LEVEL - ELEV. A



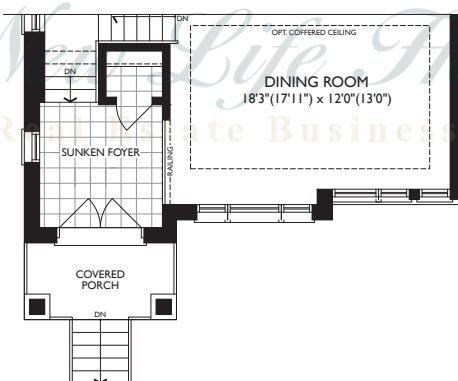
UPPER LEVEL - ELEV. A



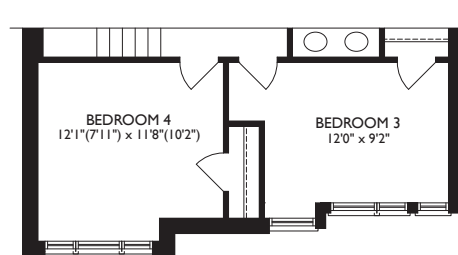
UPPER LEVEL - ELEV. B



PART. MAIN LEVEL - ELEV. B



PART. MAIN LEVEL - ELEV. C



PART. UPPER LEVEL - ELEV. C
SIMILAR TO ELEV. B

36' THE THISTLE

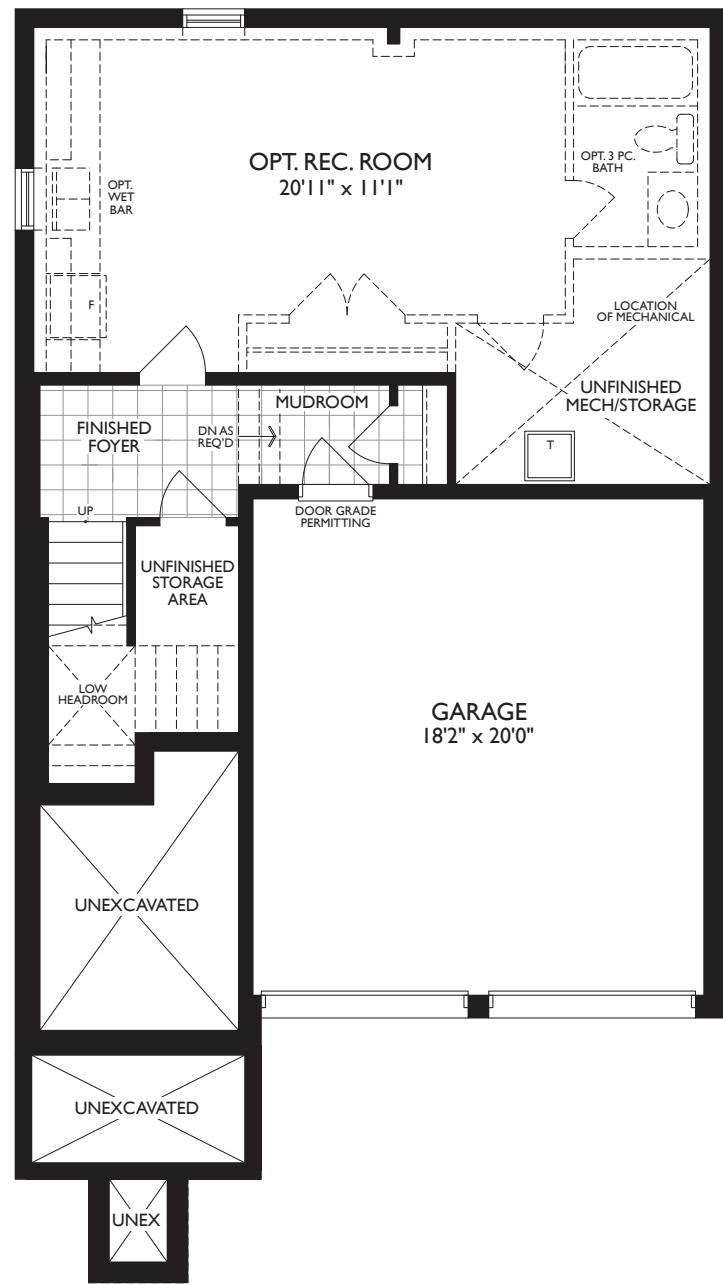
ELEV. A | 2443 SQ FT • ELEV. B | 2435 SQ FT • ELEV. C | 2433 SQ FT
OPT. REC. ROOM | 483 SQ FT

Dimensions, specifications, layouts and materials are approximate only, may vary, and are subject to change as provided in the Agreement of Purchase & Sale. All representative square footage include applicable finished lower level and open to below and above areas. Square footage varies according to architectural style. Plans may be reversed. Illustrations are artist's concept. Elevation C partial floorplans apply to Elevation B full floor plan dimensions. E. & O.E. March 2024. 3605

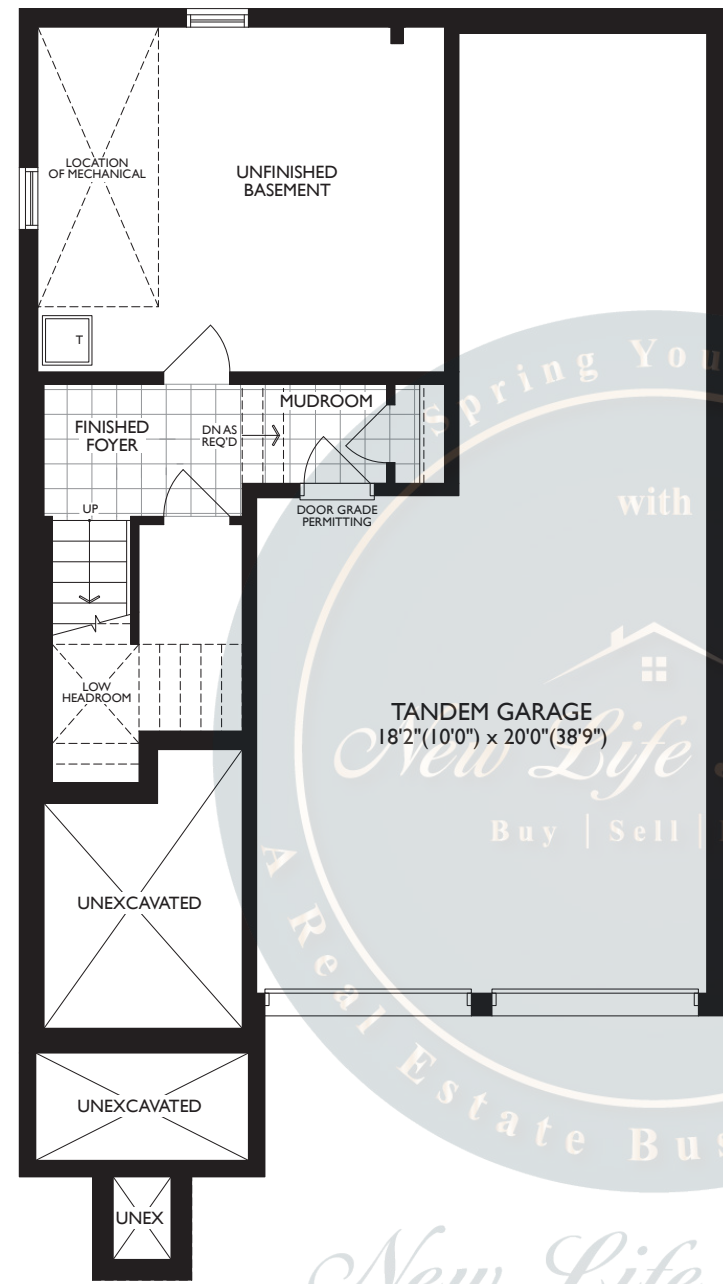


Call us: 647-215-2315 | Email: Business@newlifehomes.ca

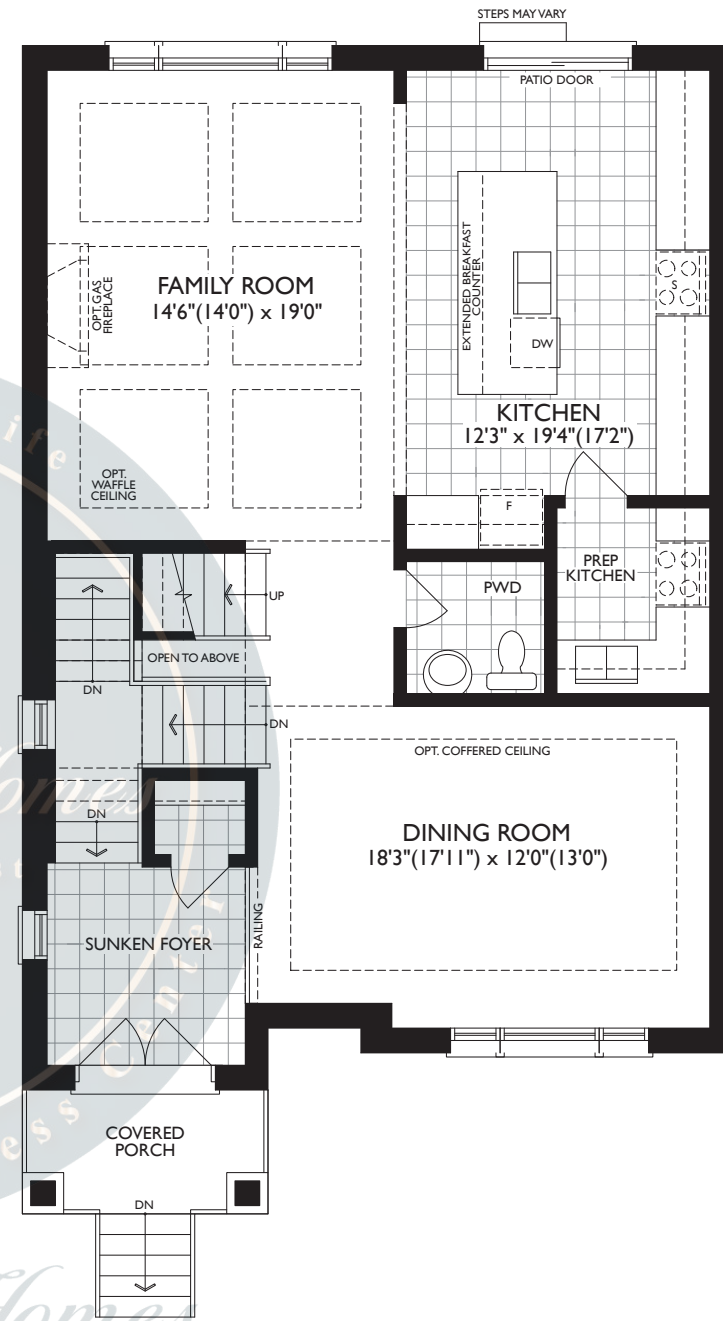
OPTIONAL FLOORPLANS



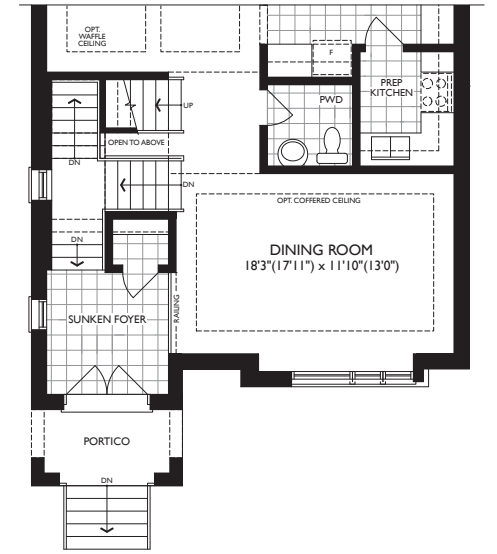
OPT. GROUND LEVEL
W/FIN. REC. ROOM ELEV. A, B & C



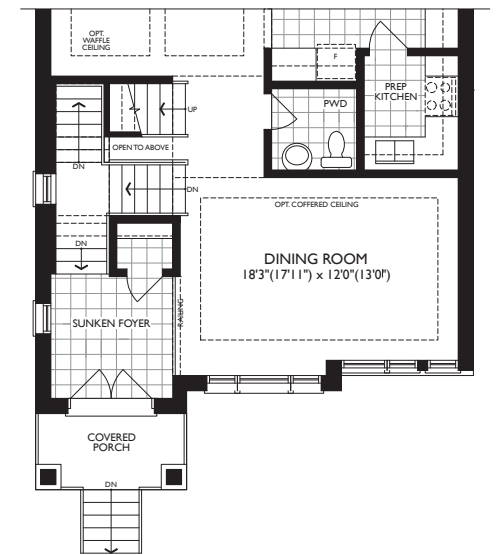
OPT. LOWER LEVEL
W/TANDEM GARAGE - ELEV. A, B & C



OPT. MAIN LEVEL
W/PREP KITCHEN - ELEV. A



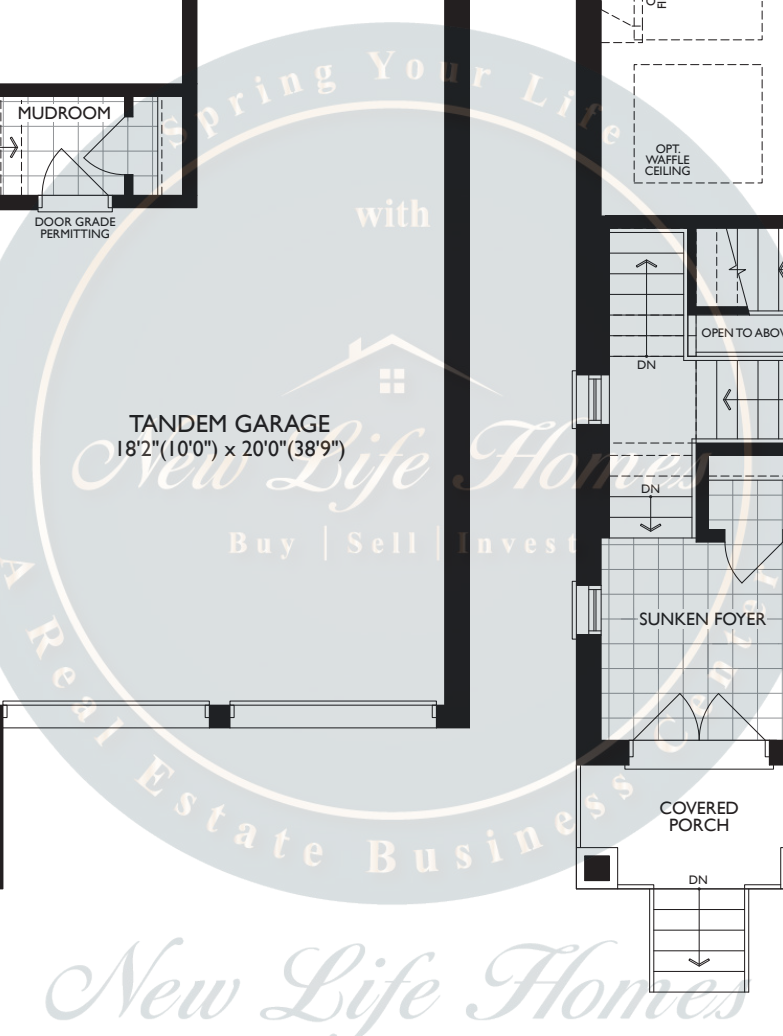
OPT. MAIN LEVEL
W/PREP KITCHEN - ELEV. B



OPT. MAIN LEVEL
W/PREP KITCHEN - ELEV. C

36' COLLECTION THE THISTLE

ELEV. A | 2443 SQ FT • ELEV. B | 2435 SQ FT • ELEV. C | 2433 SQ FT
OPT. REC. ROOM | 483 SQ FT



Dimensions, specifications, layouts and materials are approximate only, may vary, and are subject to change as provided in the Agreement of Purchase & Sale. All representative square footage include applicable finished lower level and open to below and above areas. Square footage varies according to architectural style. Plans may be reversed. Illustrations are artist's concept. Elevation C partial floorplans apply to Elevation B full floor plan dimensions. E. & O.E. March 2024. 3605



Call us: 647-215-2315 | Email: Business@newlifelifehomes.ca

HEARTWOOD

BY CACHET

THE MAGENTA

- ELEV. A | 2603 SQ FT
- ELEV. B | 2506 SQ FT
- ELEV. C | 2602 SQ FT
- OPT. REC ROOM | 585 SQ FT

Spring Y... with
36'
 COLLECTION

New Life Homes

Buy | Sell | Invest



Artist's Concept

ELEVATION B



Artist's Concept

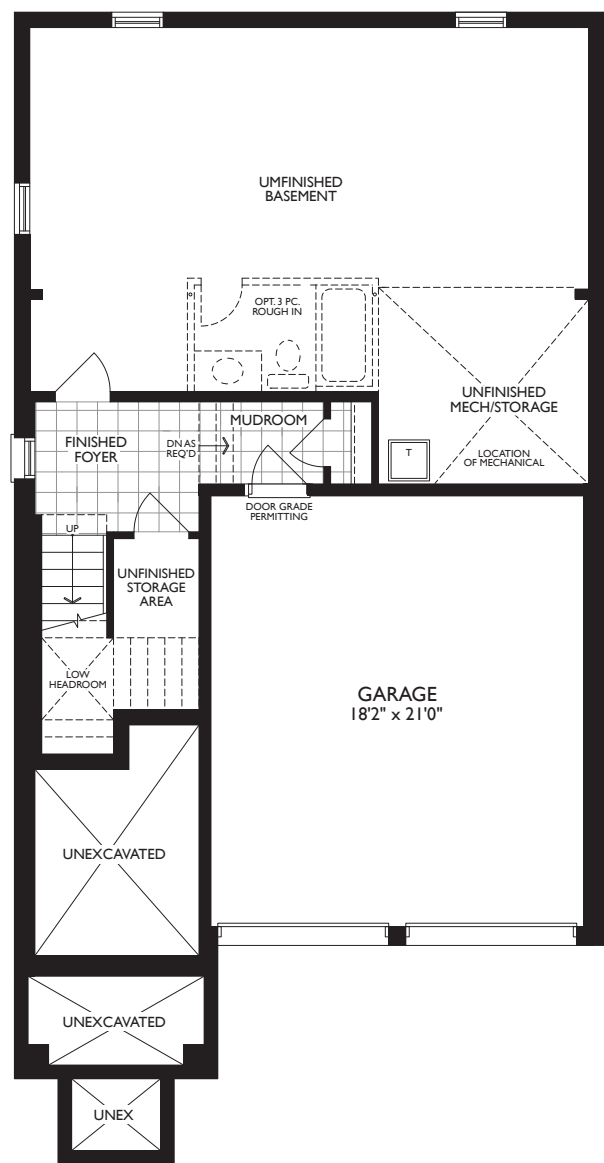
ELEVATION A



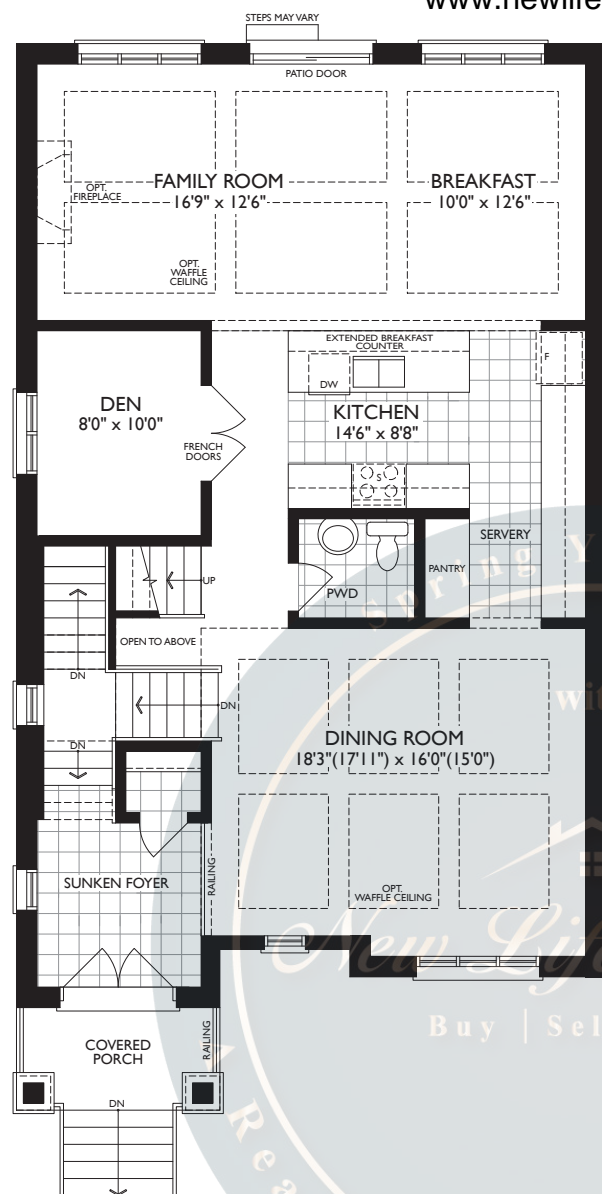
Artist's Concept

ELEVATION C

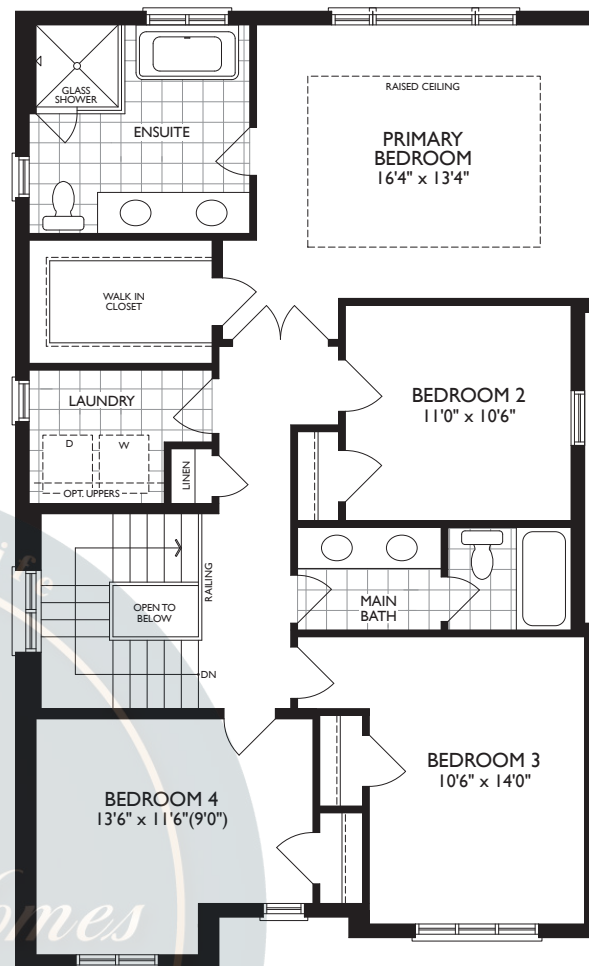




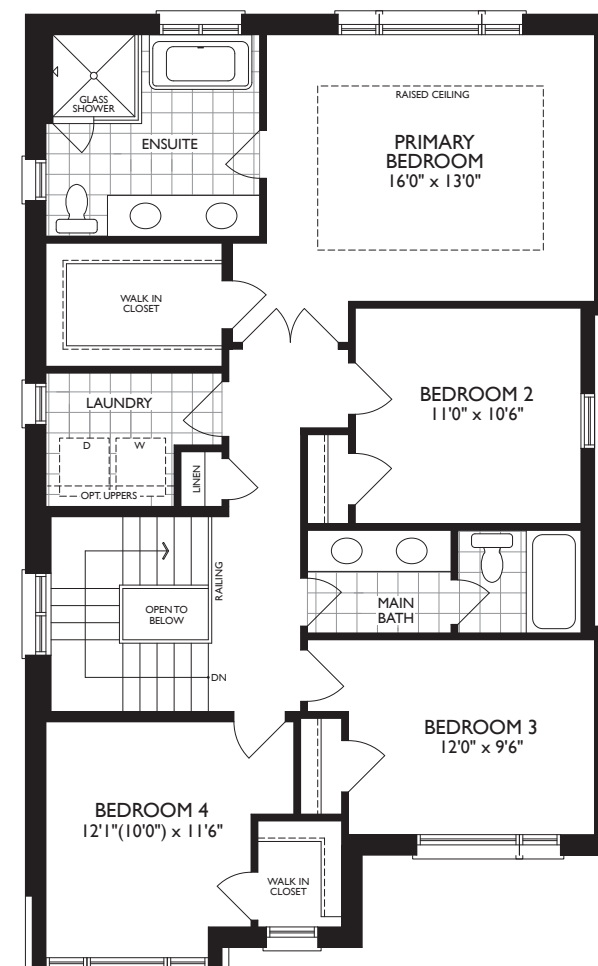
GROUND LEVEL - ELEV. A



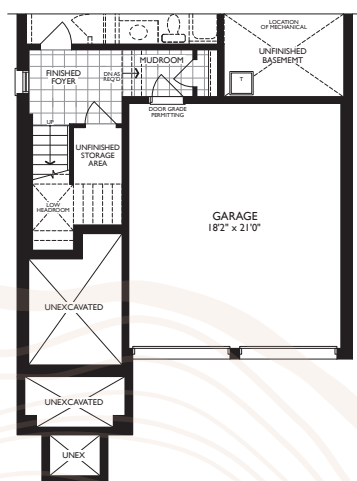
MAIN LEVEL - ELEV. A



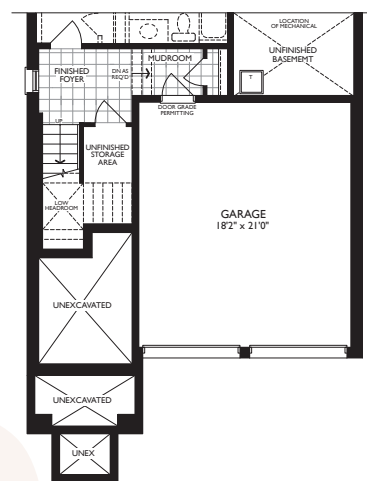
UPPER LEVEL - ELEV. A



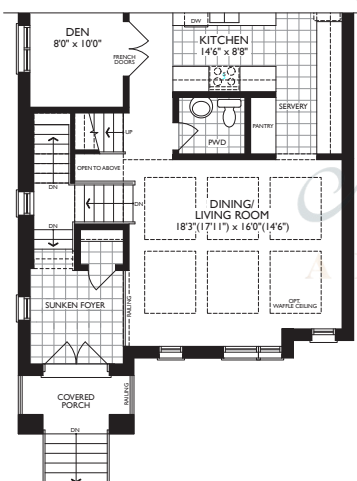
UPPER LEVEL - ELEV. B



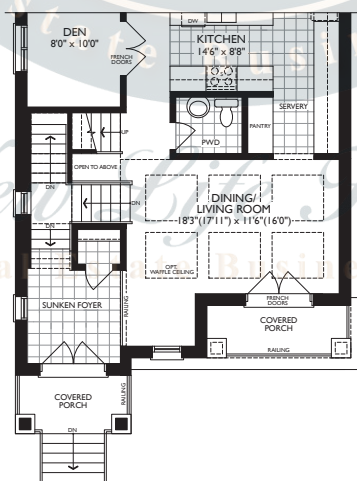
PART. GROUND LEVEL - ELEV. B



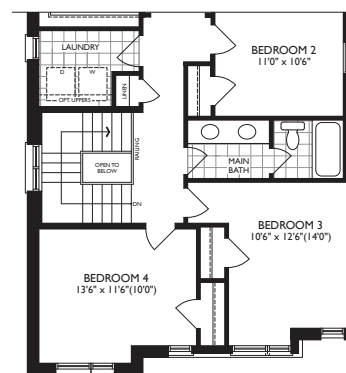
PART. GROUND LEVEL - ELEV. C



PART. MAIN LEVEL - ELEV. B



PART. MAIN LEVEL - ELEV. C



PART. UPPER LEVEL - ELEV. C

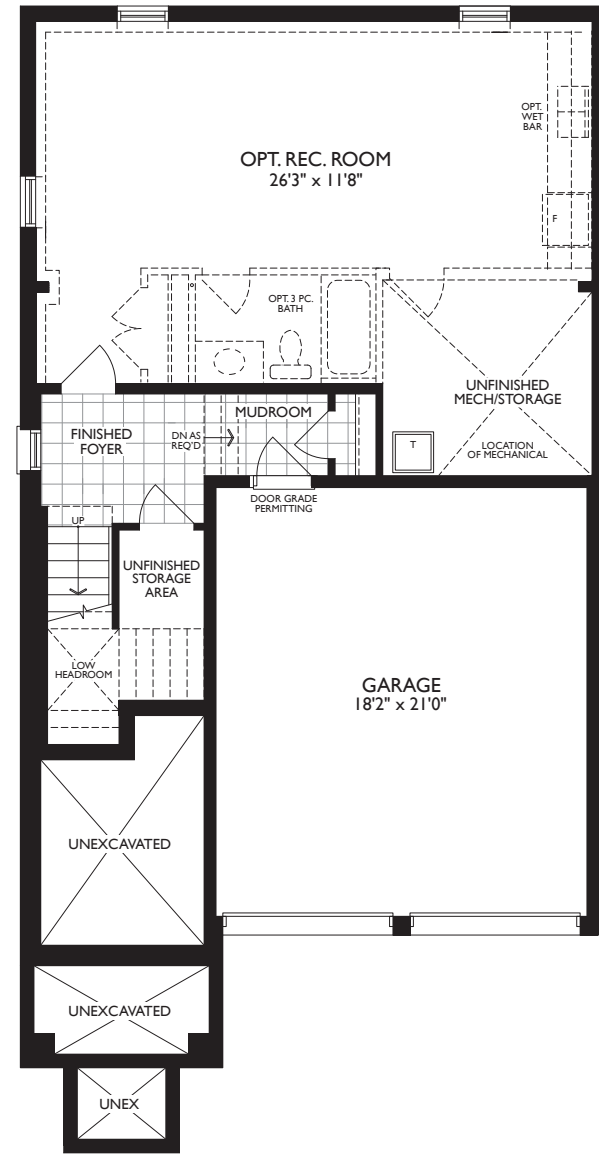
36' COLLECTION
THE MAGENTA
ELEV. A | 2603 SQ FT • ELEV. B | 2506 SQ FT • ELEV. C | 2602 SQ FT
OPT. REC. ROOM | 585 SQ FT

Dimensions, specifications, layouts and materials are approximate only, may vary, and are subject to change as provided in the Agreement of Purchase & Sale. All representative square footage include applicable finished lower level and open to below and above areas. Square footage varies according to architectural style. Plans may be reversed. Illustrations are artist's concept. Elevation C partial floorplans apply to Elevation B full floor plan dimensions. E. & O.E. March 2024. 3606

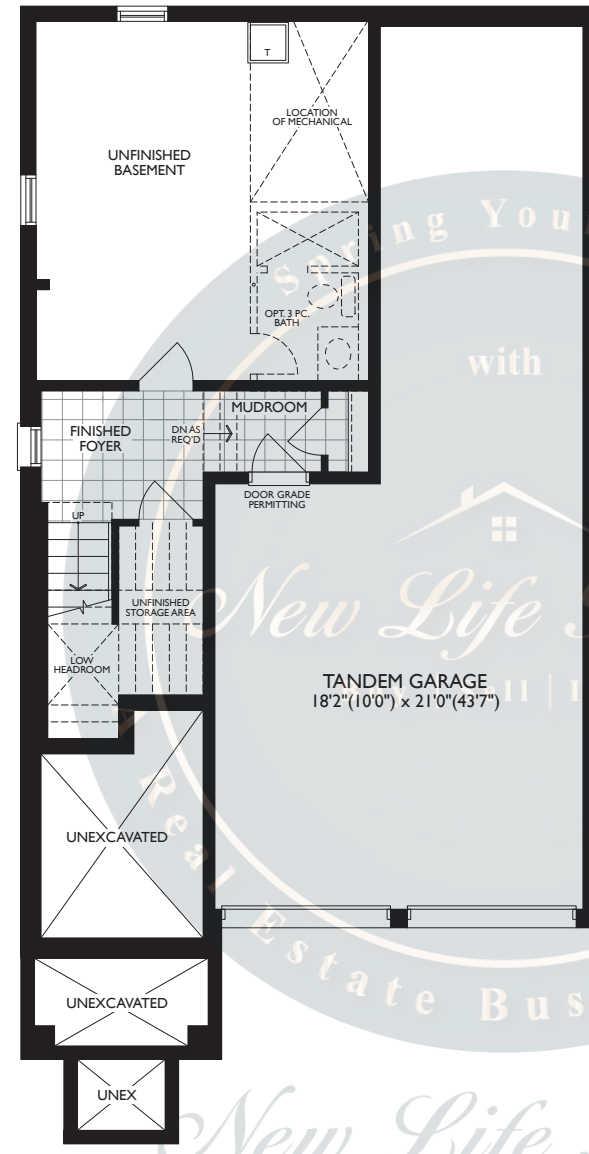


Call us: 647-215-2315 | Email: Business@newlifelifehomes.ca

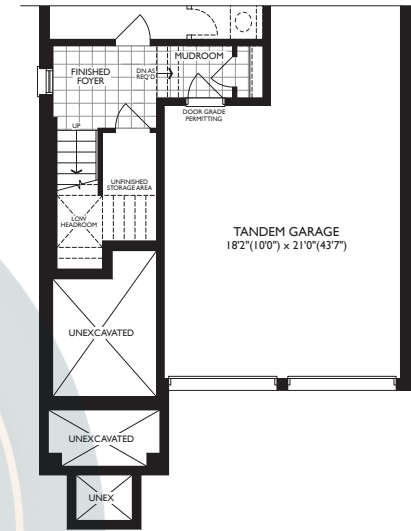
OPTIONAL FLOORPLANS



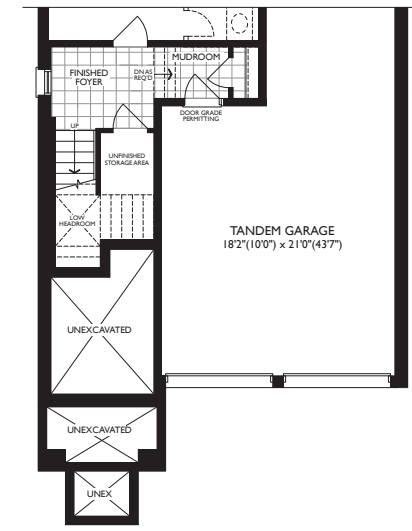
OPT. GROUND LEVEL REC ROOM
ELEV. A



OPT. GROUND LEVEL
W/TANDEM GARAGE - ELEV. A



OPT. PART. GROUND LEVEL
W/TANDEM GARAGE - ELEV. B



PART. OPT. GROUND LEVEL
W/TANDEM GARAGE - ELEV. C

36'
COLLECTION

THE MAGENTA

ELEV. A | 2603 SQ FT • ELEV. B | 2506 SQ FT • ELEV. C | 2602 SQ FT
OPT. REC. ROOM | 585 SQ FT

Dimensions, specifications, layouts and materials are approximate only, may vary, and are subject to change as provided in the Agreement of Purchase & Sale. All representative square footage include applicable finished lower level and open to below and above areas. Square footage varies according to architectural style. Plans may be reversed. Illustrations are artist's concept. Elevation C partial floorplans apply to Elevation B full floor plan dimensions. E. & O.E. March 2024. 3606



Call us: 647-215-2315 | Email: Business@newlifehomes.ca

HEARTWOOD

BY CACHET

THE PLUM

ELEV. A, B & C | 2802 SQ FT

OPT. REC. ROOM | 462 SQ FT

36'
COLLECTION

New Life Homes

Buy | Sell | Invest



ELEVATION B

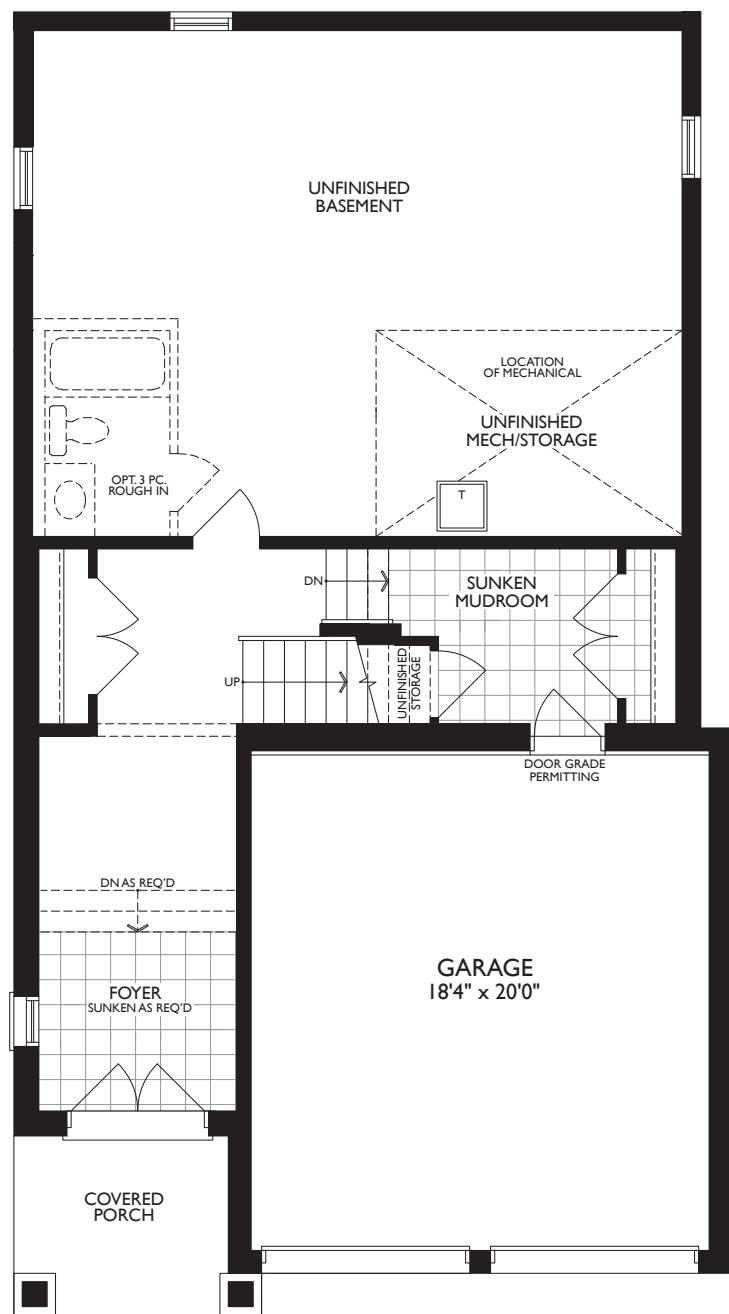


ELEVATION A

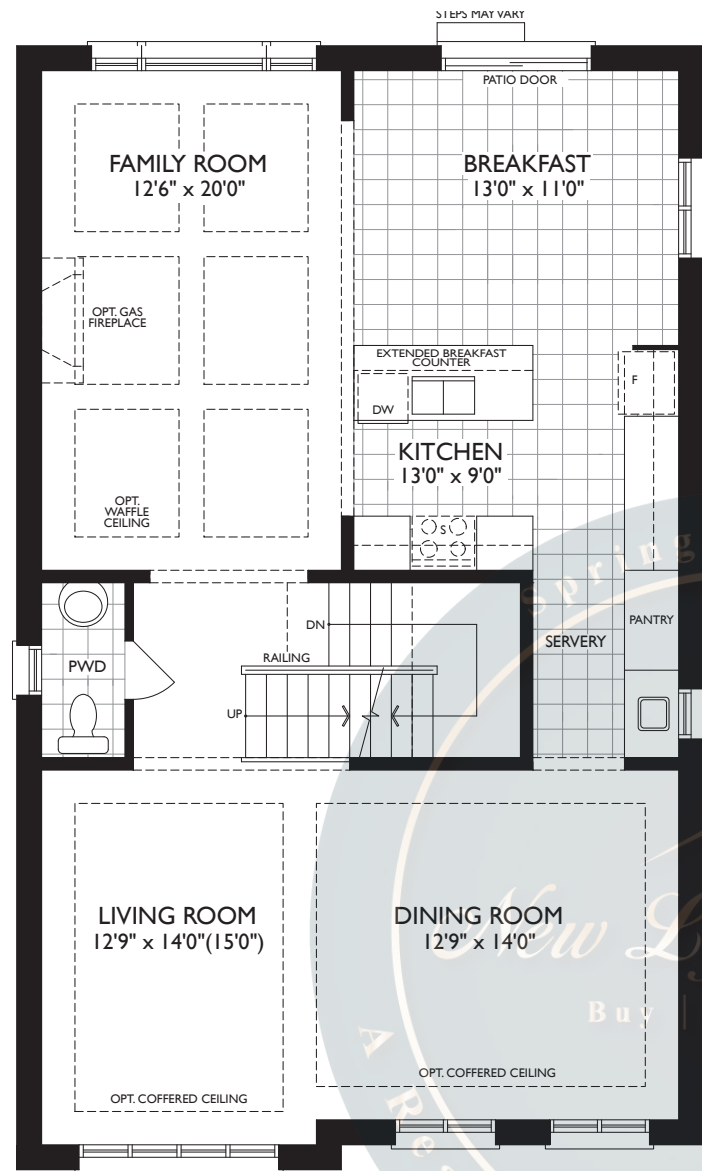


ELEVATION C

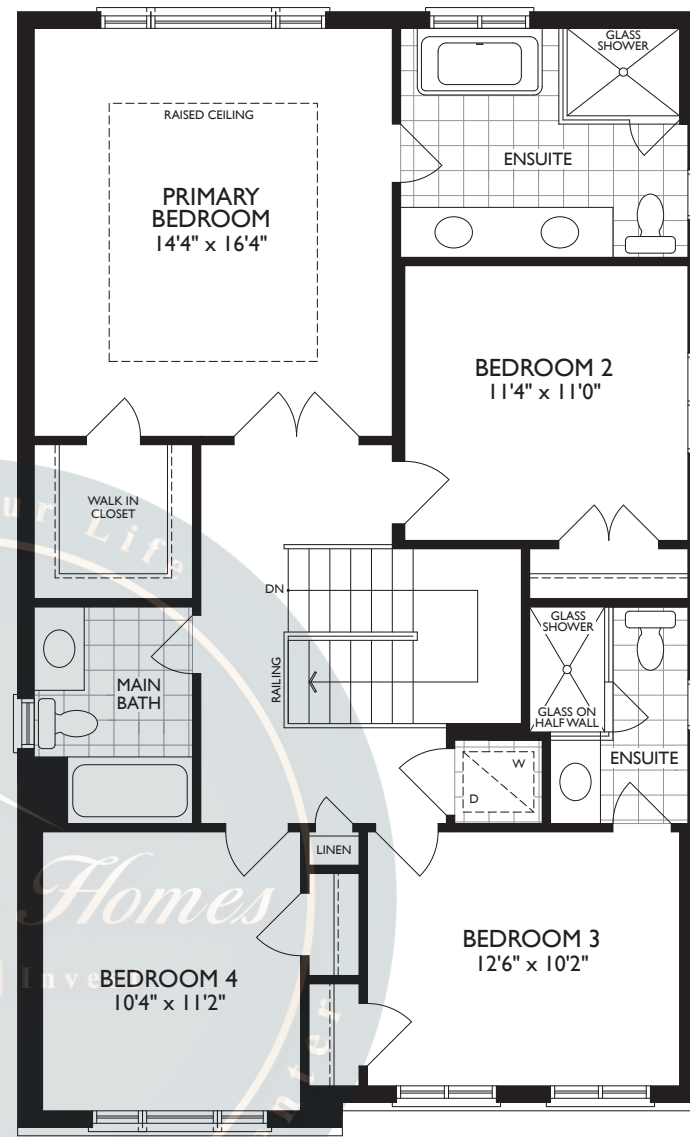




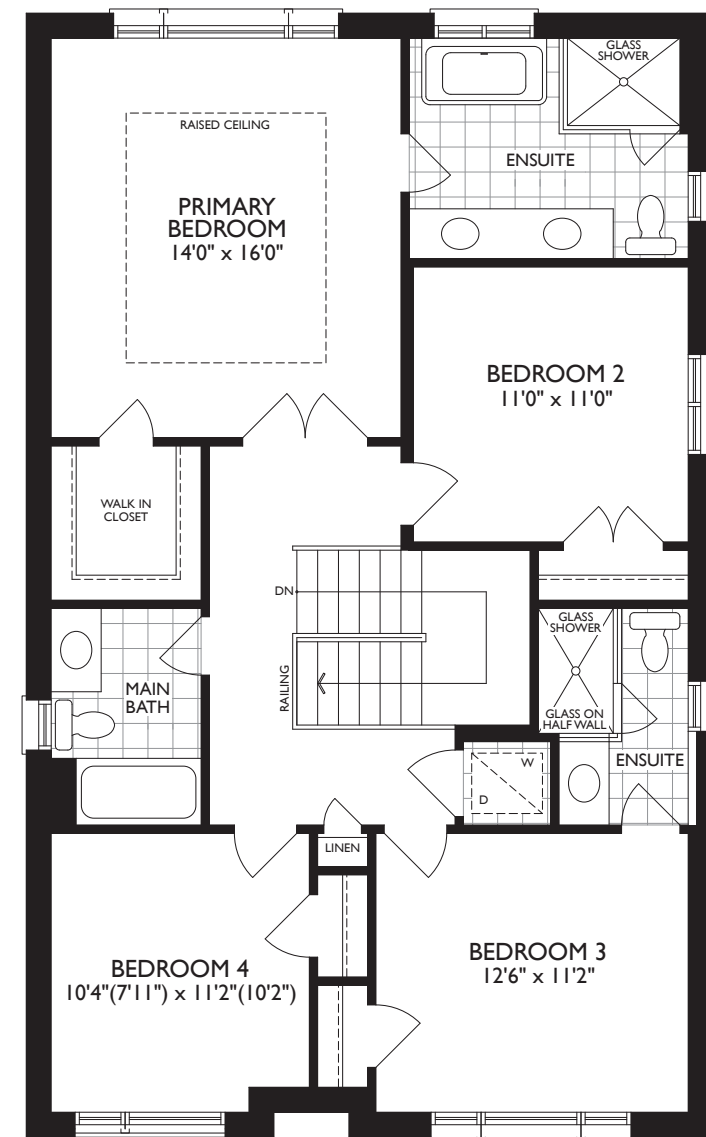
GROUND LEVEL - ELEV. A



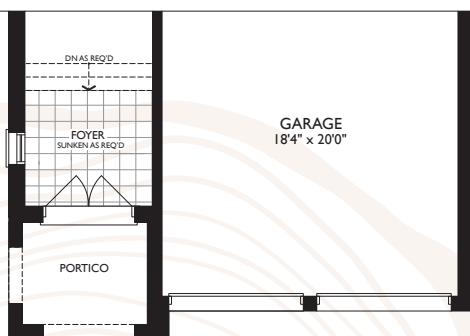
MAIN LEVEL - ELEV. A



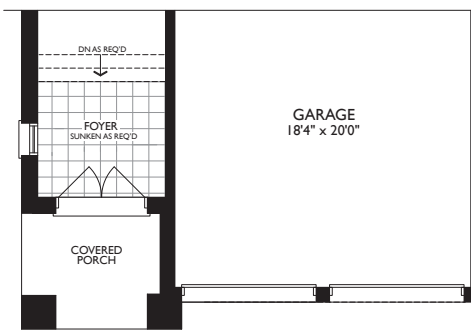
UPPER LEVEL - ELEV. A



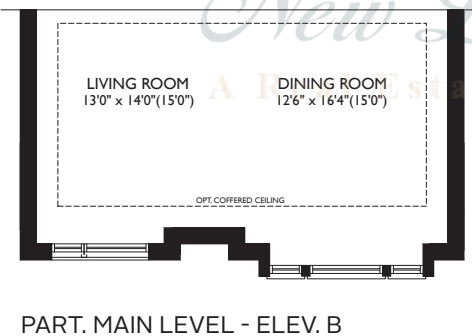
UPPER LEVEL - ELEV. B



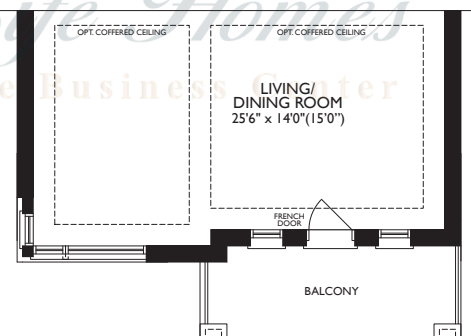
PART. GROUND LEVEL - ELEV. B



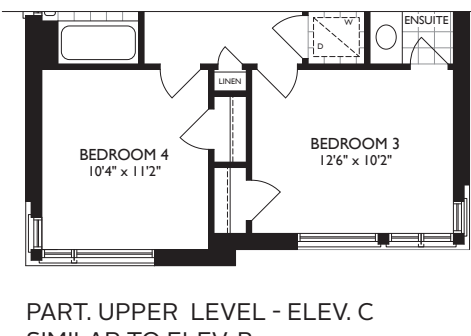
PART. GROUND LEVEL - ELEV. C



PART. MAIN LEVEL - ELEV. B



PART. MAIN LEVEL - ELEV. C



PART. UPPER LEVEL - ELEV. C
SIMILAR TO ELEV. B

36' THE PLUM

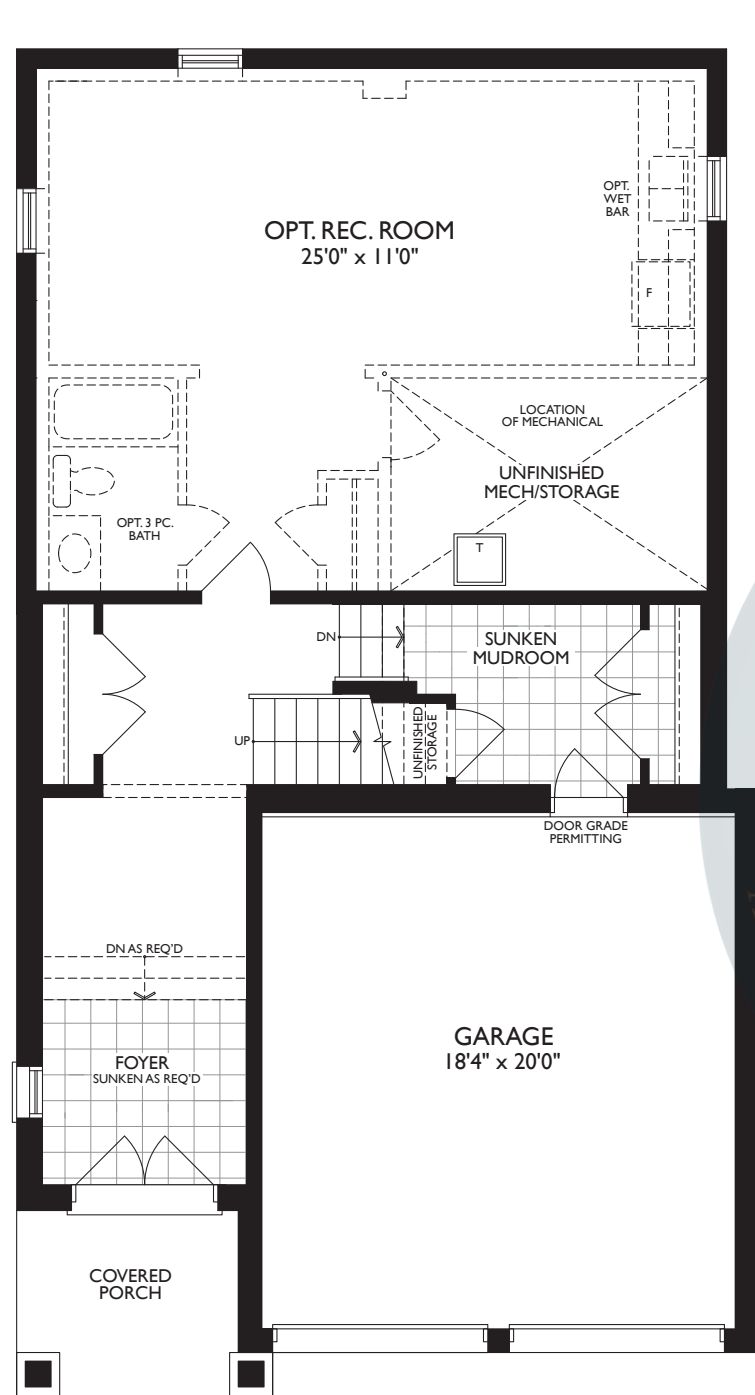
ELEV. A, B & C | 2802 SQ FT • OPT. REC. ROOM | 462 SQ FT

Dimensions, specifications, layouts and materials are approximate only, may vary, and are subject to change as provided in the Agreement of Purchase & Sale. All representative square footage include applicable finished lower level and open to below and above areas. Square footage varies according to architectural style. Plans may be reversed. Illustrations are artist's concept. Elevation C partial floorplans apply to Elevation B full floor plan dimensions. E. & O.E. March 2024. 3607

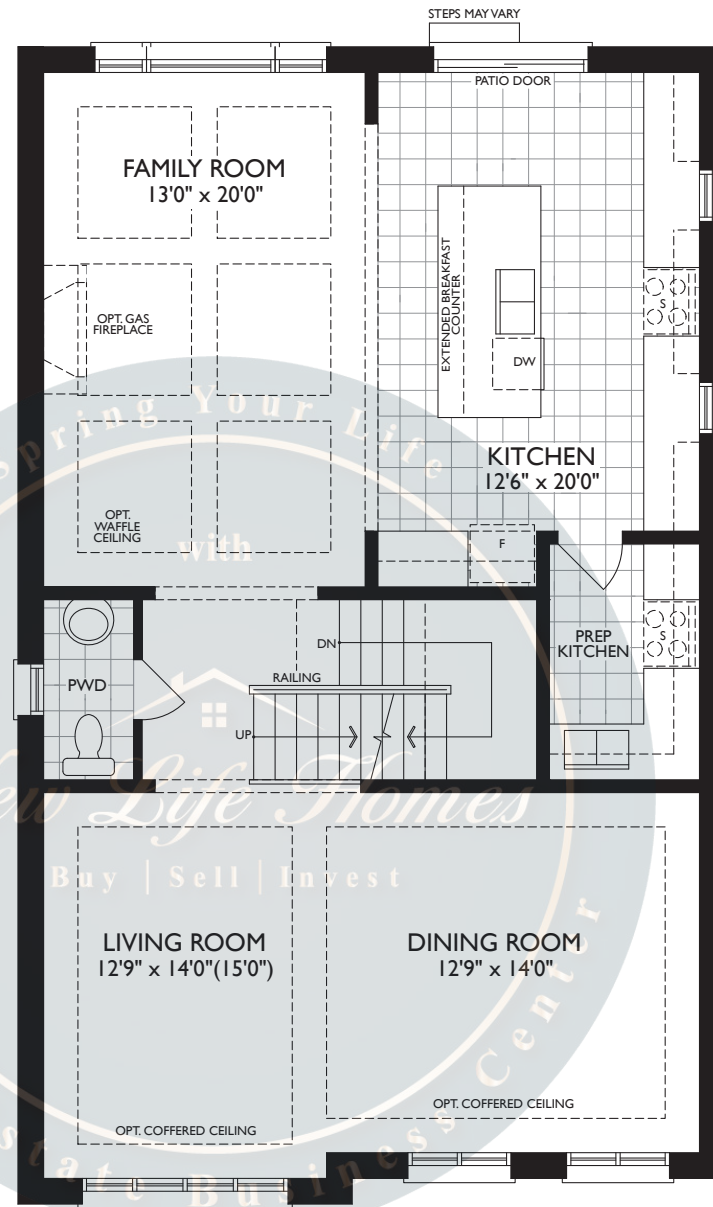


Call us: 647-215-2315 | Email: Business@newlifehomes.ca

OPTIONAL FLOORPLANS



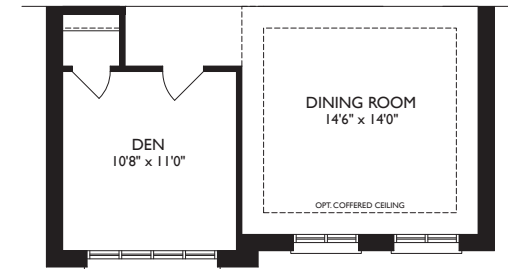
OPT. GROUND LEVEL - ELEV. A



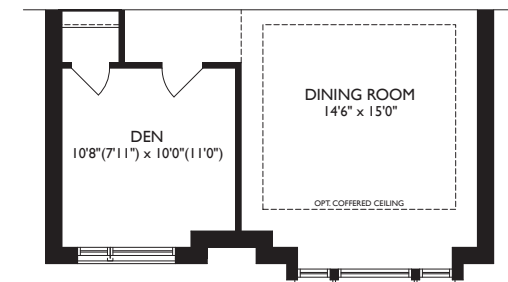
OPT. MAIN LEVEL
W/PREP KITCHEN - ELEV. A



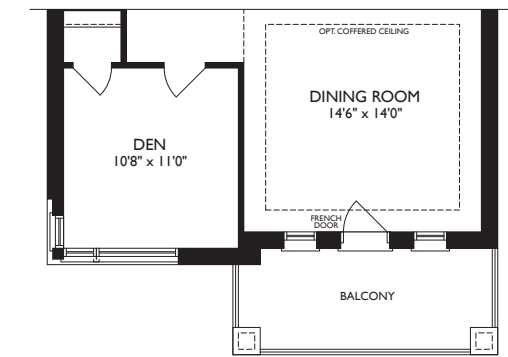
PART. OPT. MAIN LEVEL
W/PREP KITCHEN - ELEV. B



PART. OPT. MAIN LEVEL W/DEN -
ELEV. A - MAIN LEVEL SIMILAR



PART. OPT. MAIN LEVEL
W/DEN - ELEV. B



PART. OPT. MAIN LEVEL W/DEN
OPT. PREP. KITCHEN - ELEV. C
MAIN LEVEL SIMILAR

HEARTWOOD

BY CACHET

THE MAUVE

ELEV. A, B & C | 3051 SQ FT

OPT. REC. ROOM | 669 SQ FT

36' COLLECTION

New Life Homes

Buy | Sell | Invest



ELEVATION B

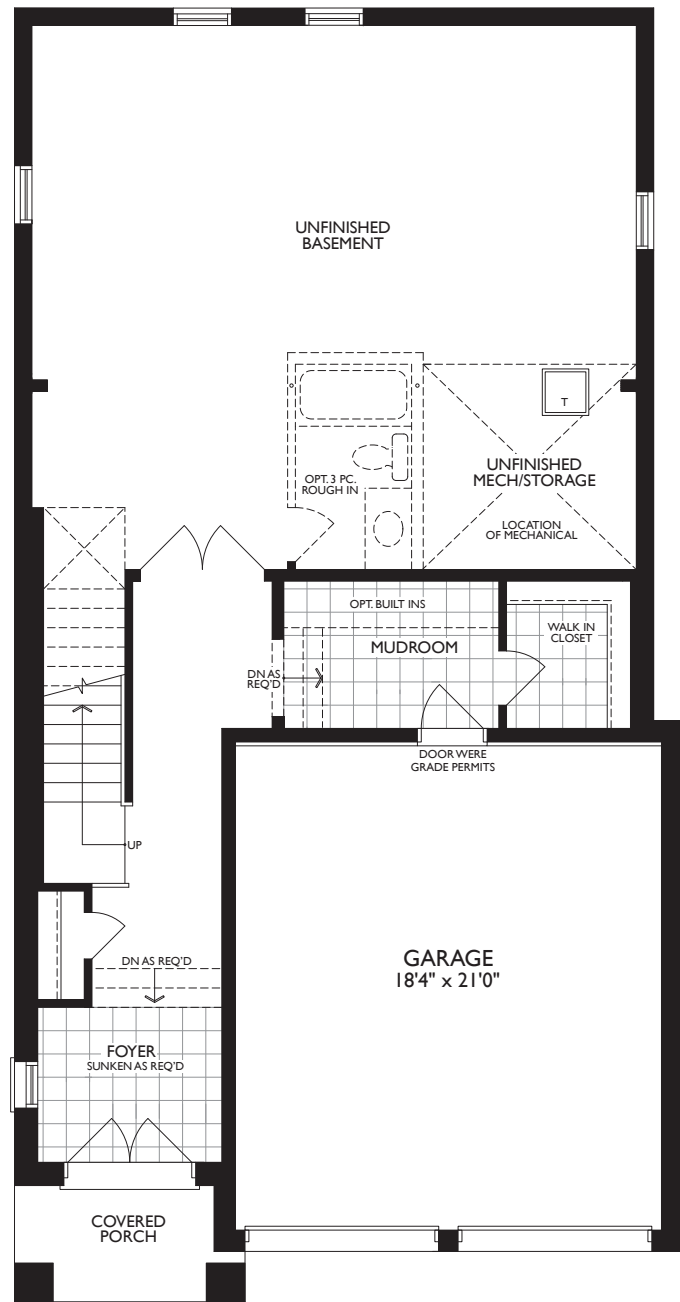


ELEVATION A

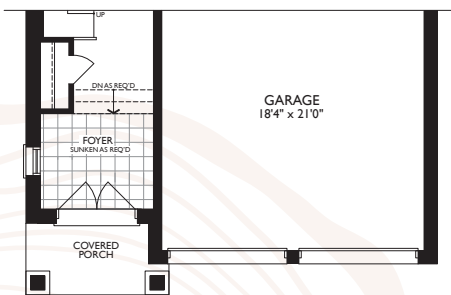


ELEVATION C

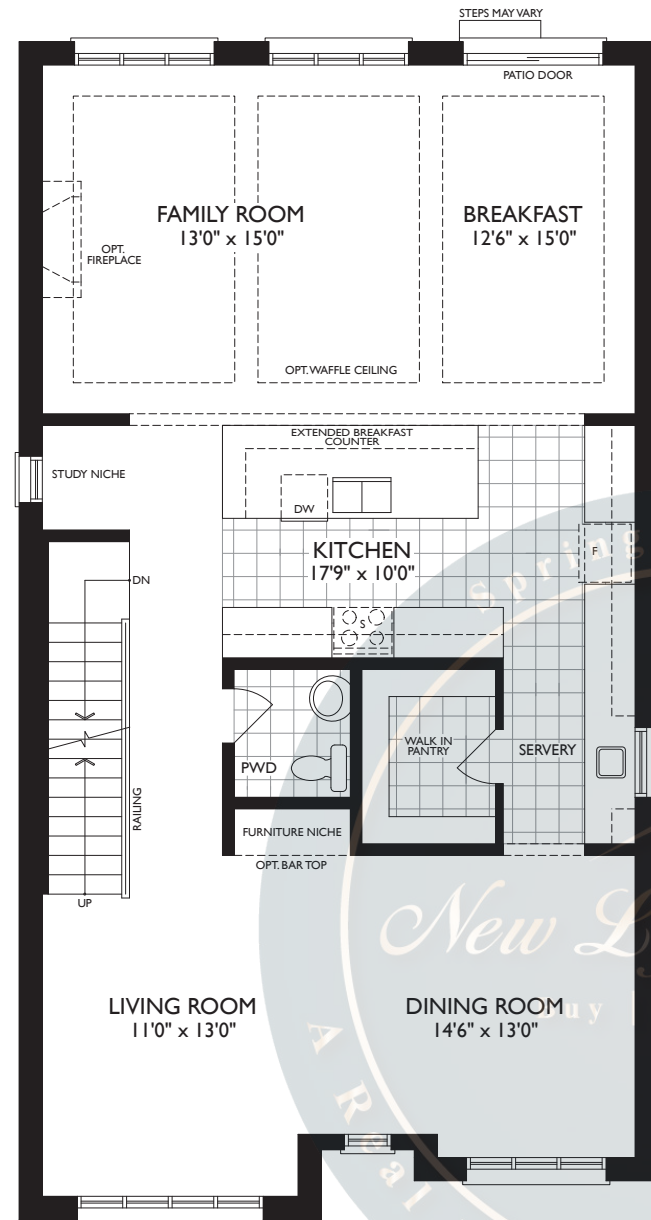




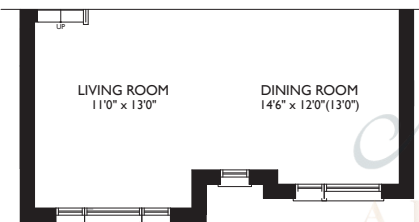
GROUND LEVEL - ELEV. A & B



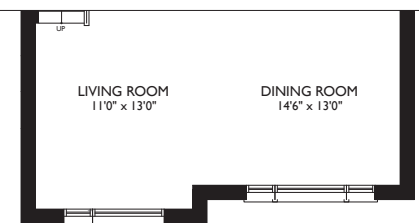
PART. GROUND LEVEL - ELEV. C



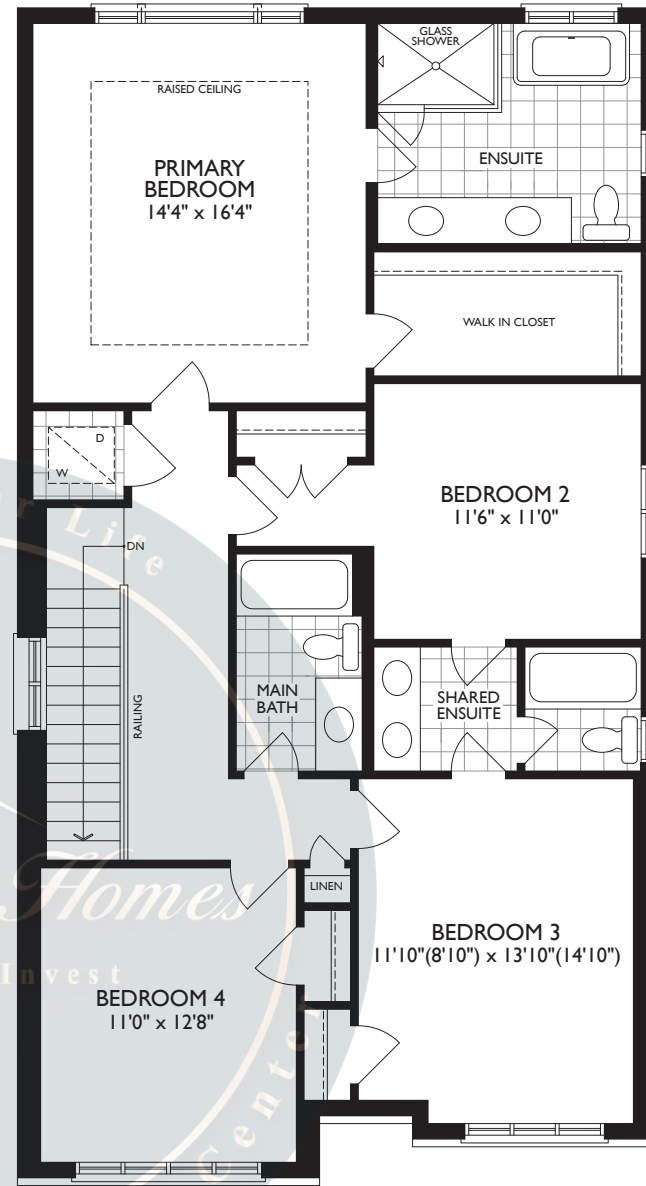
MAIN LEVEL - ELEV. A



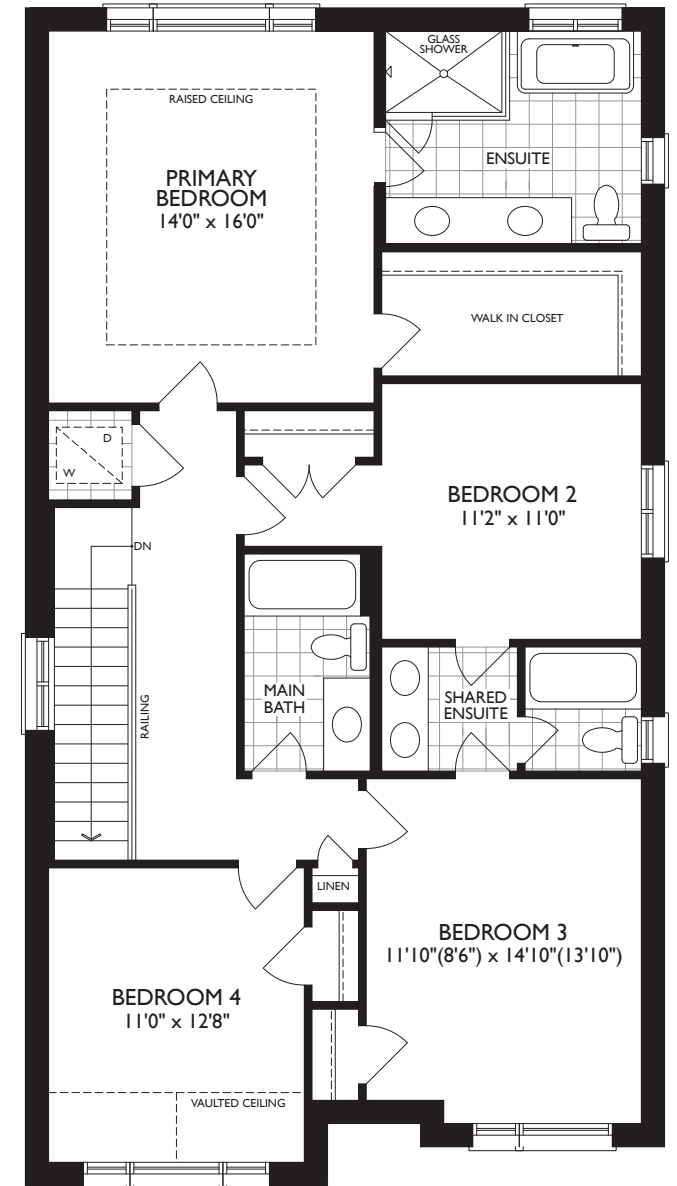
PART. MAIN LEVEL - ELEV. B



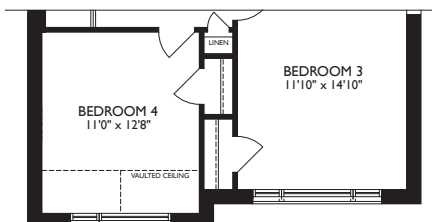
PART. MAIN LEVEL - ELEV. C



UPPER LEVEL - ELEV. A



UPPER LEVEL - ELEV. B



PART. UPPER LEVEL - ELEV. C

36' THE MAUVE
COLLECTION

ELEV. A, B & C | 3051 SQ FT • OPT. REC ROOM | 669 SQ FT

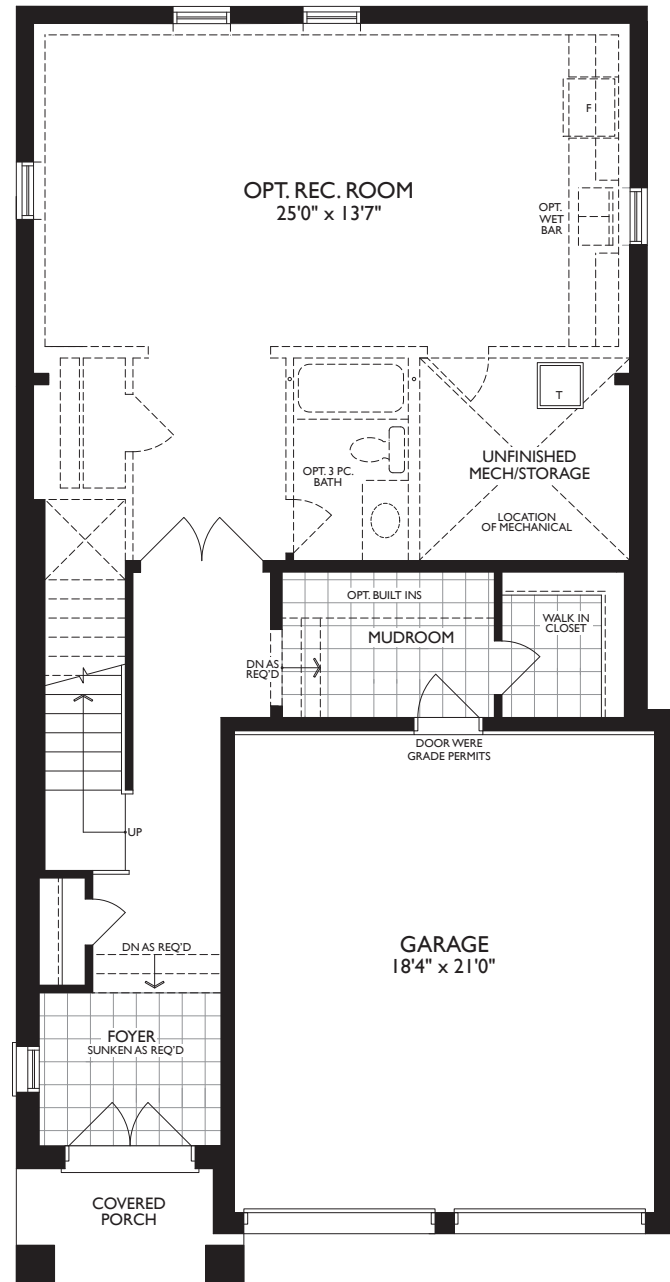


Dimensions, specifications, layouts and materials are approximate only, may vary, and are subject to change as provided in the Agreement of Purchase & Sale. All representative square footage include applicable finished lower level and open to below and above areas. Square footage varies according to architectural style. Plans may be reversed. Illustrations are artist's concept. Elevation C partial floorplans apply to Elevation B full floor plan dimensions. E. & O.E. March 2024. 3608

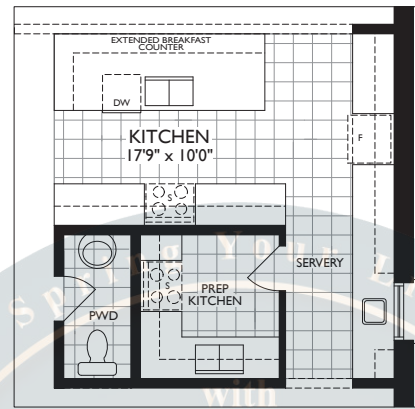


Call us: 647-215-2315 | Email: Business@newlifehomes.ca

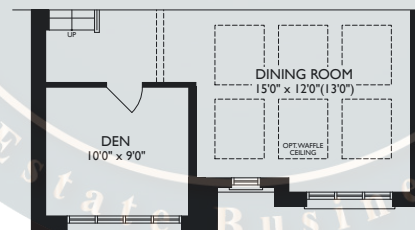
OPTIONAL FLOORPLANS



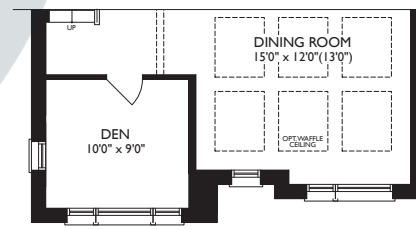
OPT. GROUND LEVEL REC ROOM
ELEV. A



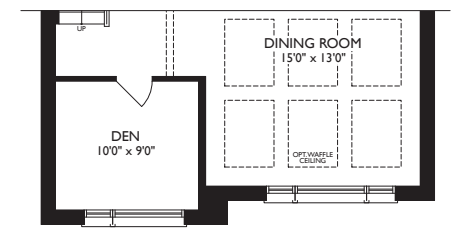
PART. OPT. MAIN LEVEL
W/PREP KITCHEN - ELEV. A, B & C



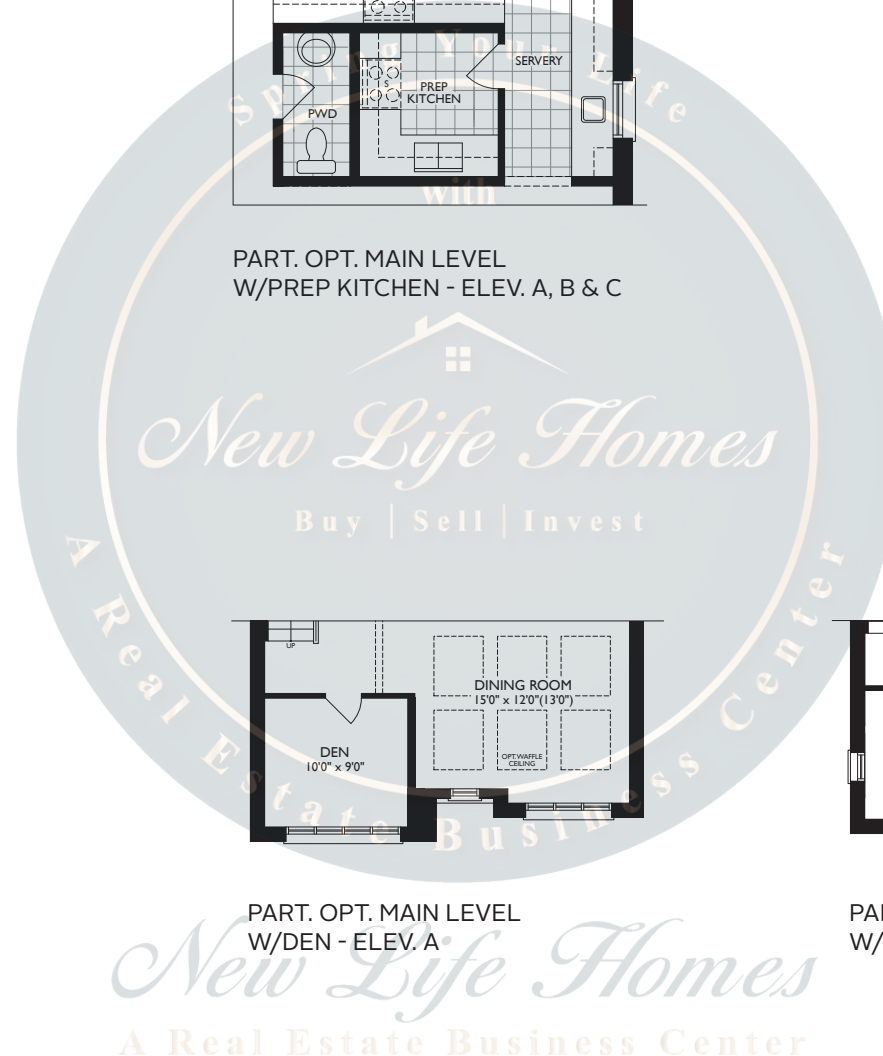
PART. OPT. MAIN LEVEL
W/DEN - ELEV. A



PART. OPT. MAIN LEVEL
W/DEN - ELEV. B



PART. OPT. MAIN LEVEL
W/DEN - ELEV. C



36'
COLLECTION

THE MAUVE

ELEV. A, B & C | 3051 SQ FT • OPT. REC ROOM | 669 SQ FT

Dimensions, specifications, layouts and materials are approximate only, may vary, and are subject to change as provided in the Agreement of Purchase & Sale. All representative square footage include applicable finished lower level and open to below and above areas. Square footage varies according to architectural style. Plans may be reversed. Illustrations are artist's concept. Elevation C partial floorplans apply to Elevation B full floor plan dimensions. E. & O.E. March 2024. 3608



Call us: 647-215-2315 | Email: Business@newlifehomes.ca