

NORTHSIDE

GUELPH

New Life Homes

Buy | Sell | Invest

A Real Estate Business Center

New Life Homes

A Real Estate Business Center

FLOOR PLANS

Terrace Level

NORTHSIDE

GUELPH

INTERIOR UNIT

UNIT DETAILS

2 BEDROOM

2 BATHROOM

TERRACE

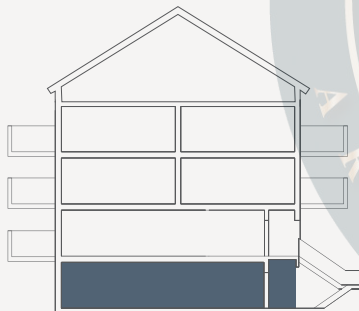
LIVING SPACE

INTERIOR 993 SQ. FT.

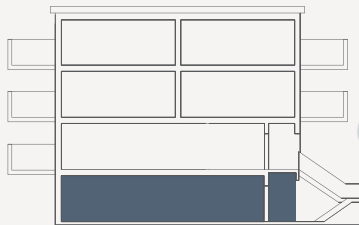
EXTERIOR 73 SQ. FT.

TOTAL 1,066 SQ. FT.

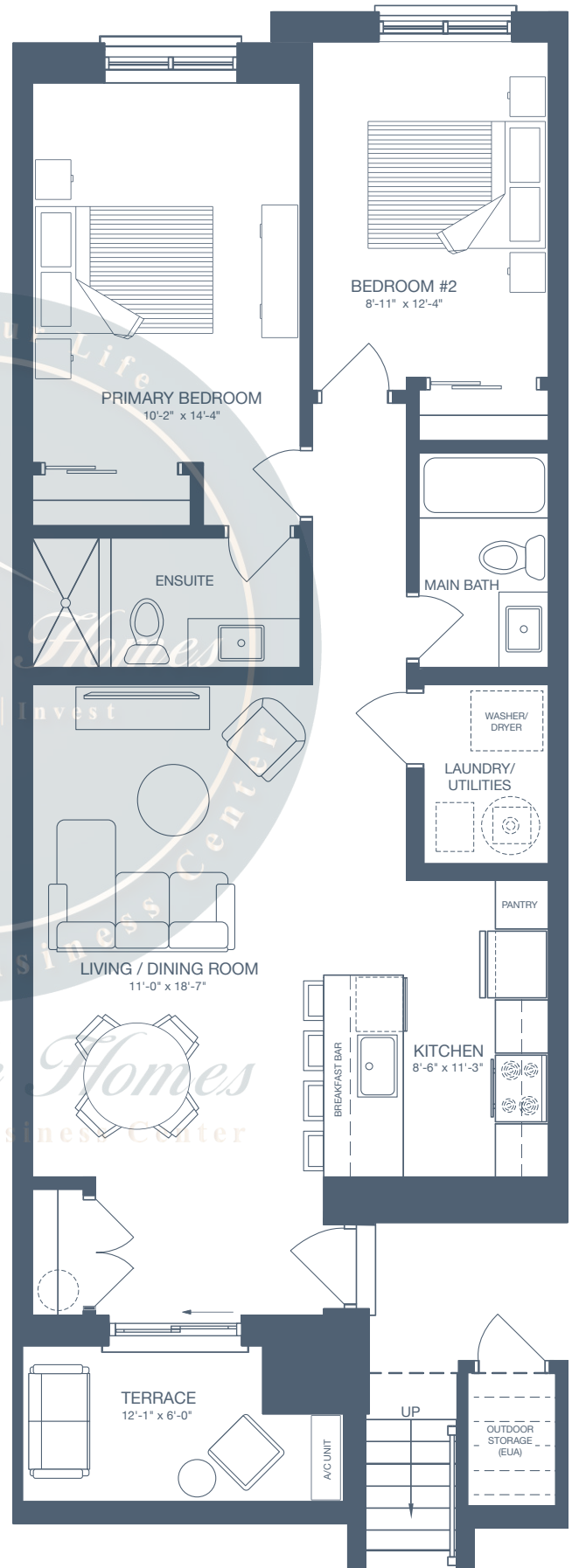
UNIT LOCATION



BLOCK A | B | C | D | E



BLOCK F | G



All drawings are an artist's concept and may vary slightly from the final product. E. & O.E. Actual usable floor space may vary from stated area, and square footage has been calculated based on usable living space according to the Tarion rules. Drawings may show optional features which may not be included in the base price. Bulkheads and box outs may be required as chases for plumbing and mechanical. Location of mechanical room equipment will be located by the builder and may change based on plan. Number of steps in front entry may vary based on grade.

Main Level

NORTHSIDE

GUELPH

INTERIOR UNIT

UNIT DETAILS

2 BEDROOM

2 BATHROOM

BALCONY

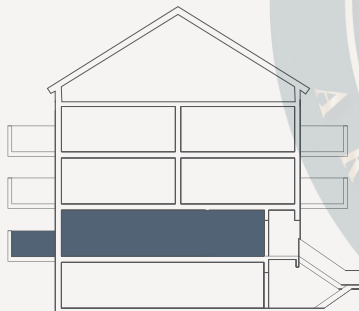
LIVING SPACE

INTERIOR 869 SQ. FT.

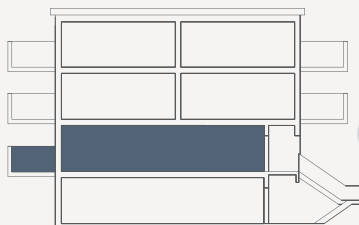
EXTERIOR 63 SQ. FT.

TOTAL 932 SQ. FT.

UNIT LOCATION



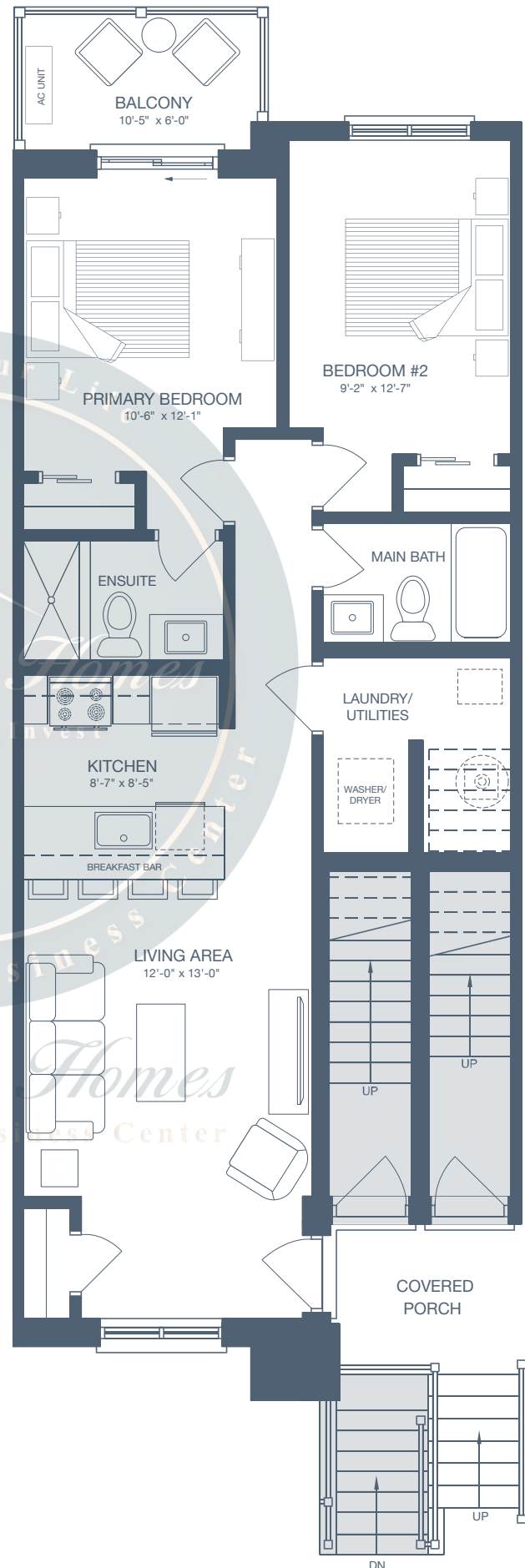
BLOCK A | B | C | D | E



BLOCK F | G



All drawings are an artist's concept and may vary slightly from the final product. E. & O.E. Actual usable floor space may vary from stated area, and square footage has been calculated based on usable living space according to the Tarion rules. Drawings may show optional features which may not be included in the base price. Bulkheads and box outs may be required as chases for plumbing and mechanical. Location of mechanical room equipment will be located by the builder and may change based on plan. Number of steps in front entry may vary based on grade.



Front Two-Storey

NORTHSIDE

GUELPH

INTERIOR UNIT

UNIT DETAILS

- 2 BEDROOM
- 2 BATHROOM
- 2 BALCONIES

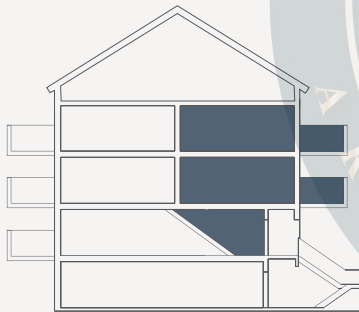
LIVING SPACE

INTERIOR 1,106 SQ. FT.

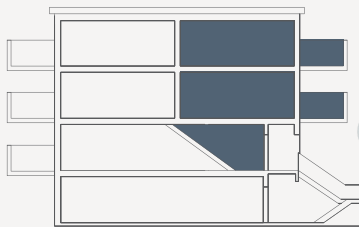
EXTERIOR 126 SQ. FT.

TOTAL 1,232 SQ. FT.

UNIT LOCATION



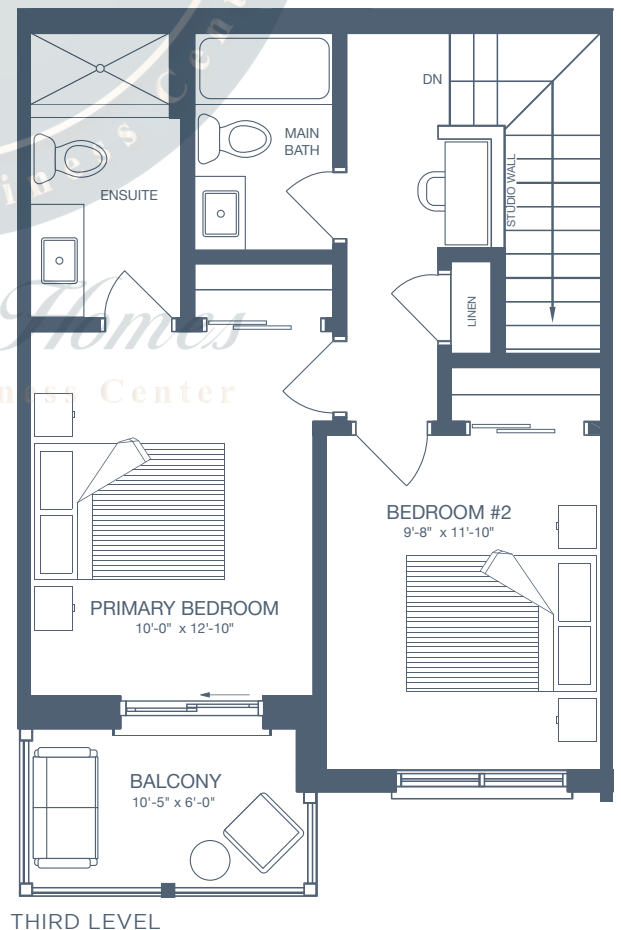
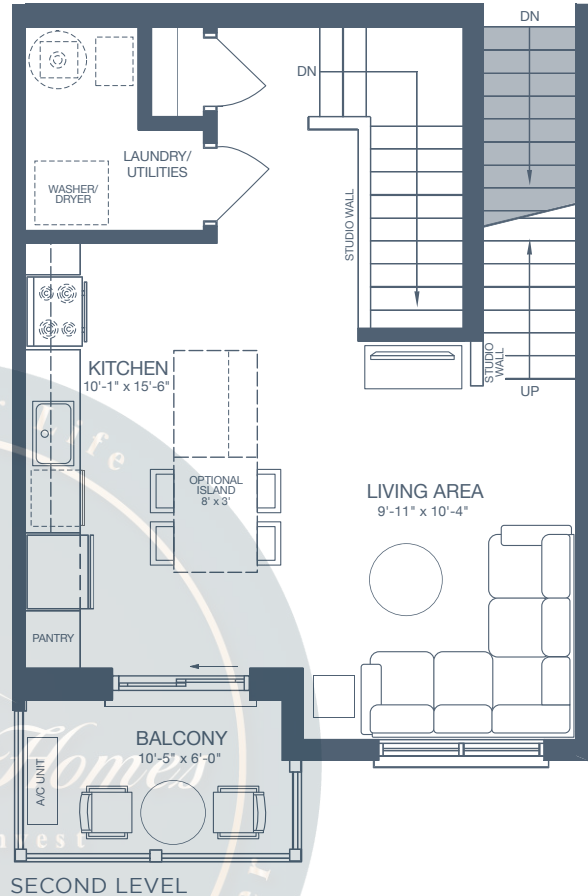
BLOCK A | B | C | D | E



BLOCK F | G



All drawings are an artist's concept and may vary slightly from the final product. E. & O.E. Actual usable floor space may vary from stated area, and square footage has been calculated based on usable living space according to the Tarion rules. Drawings may show optional features which may not be included in the base price. Bulkheads and box outs may be required as chases for plumbing and mechanical. Location of mechanical room equipment will be located by the builder and may change based on plan. Number of steps in front entry may vary based on grade.



Rear Two-Storey

NORTHSIDE

GUELPH

INTERIOR UNIT

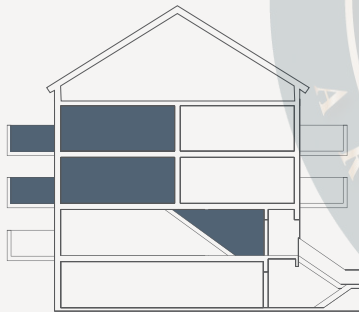
UNIT DETAILS

- 2 BEDROOM
- 2 BATHROOM
- 2 BALCONIES

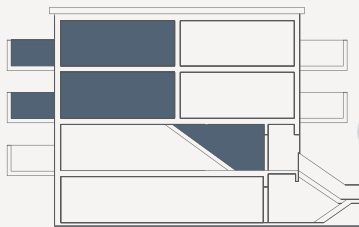
LIVING SPACE

INTERIOR 1,120 SQ. FT.
 EXTERIOR 126 SQ. FT.
TOTAL 1,246 SQ. FT.

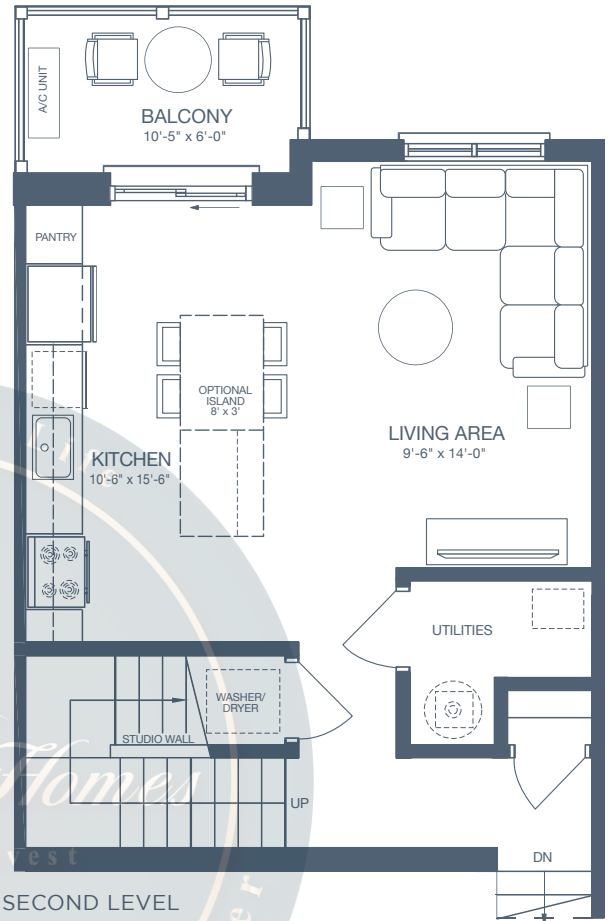
UNIT LOCATION



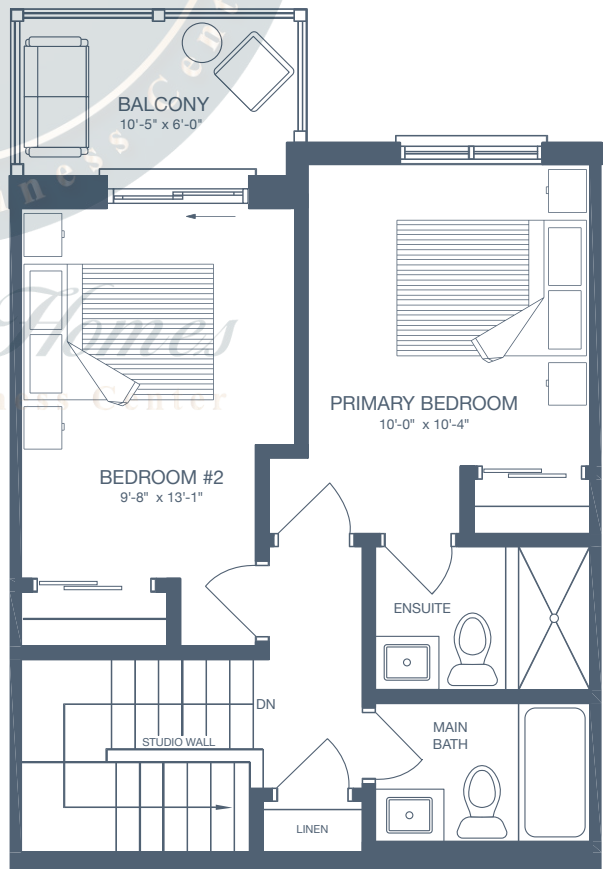
BLOCK A | B | C | D | E



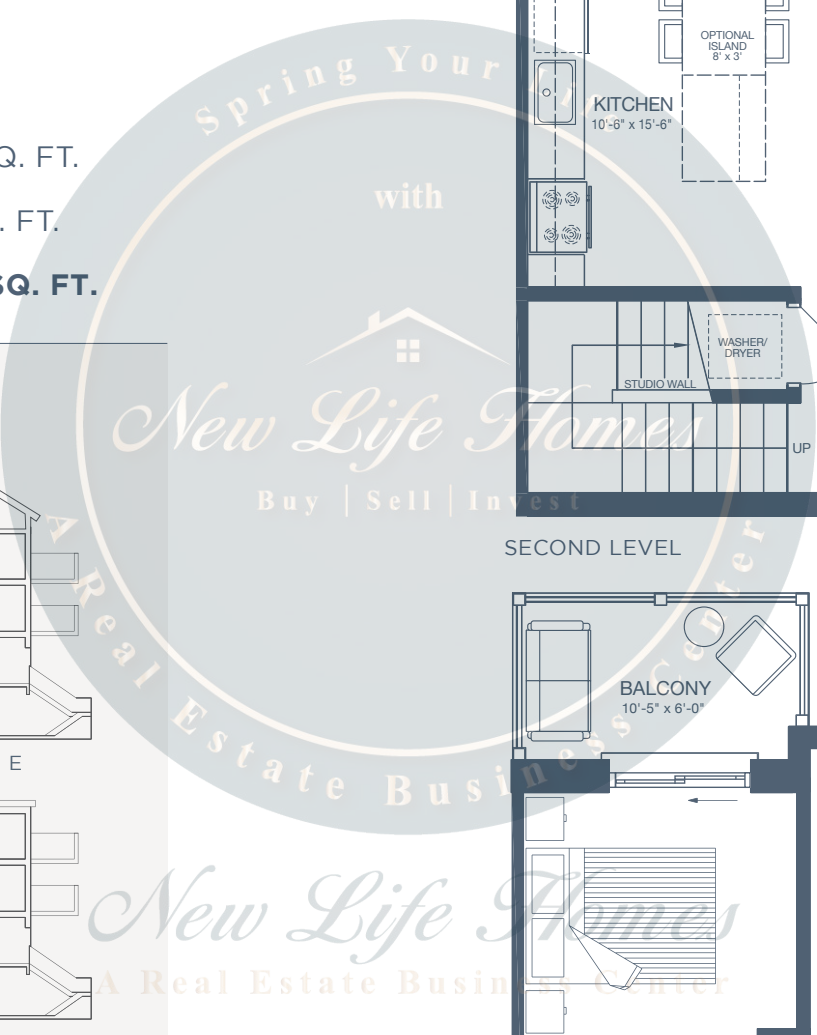
BLOCK F | G



SECOND LEVEL



THIRD LEVEL



All drawings are an artist's concept and may vary slightly from the final product. E. & O.E. Actual usable floor space may vary from stated area, and square footage has been calculated based on usable living space according to the Tarion rules. Drawings may show optional features which may not be included in the base price. Bulkheads and box outs may be required as chases for plumbing and mechanical. Location of mechanical room equipment will be located by the builder and may change based on plan. Number of steps in front entry may vary based on grade.

Terrace Level

NORTHSIDE

GUELPH

ENHANCED END UNIT

UNIT DETAILS

2 BEDROOM

2 BATHROOM

TERRACE

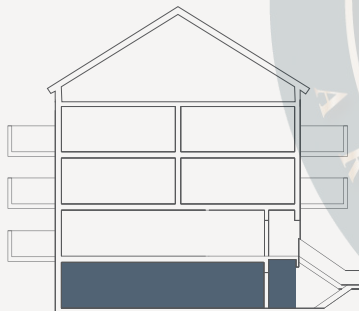
LIVING SPACE

INTERIOR 1,028 SQ. FT.

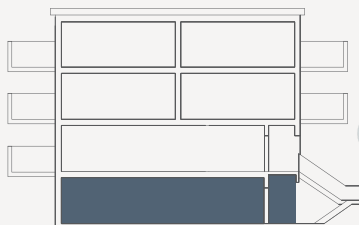
EXTERIOR 73 SQ. FT.

TOTAL 1,101 SQ. FT.

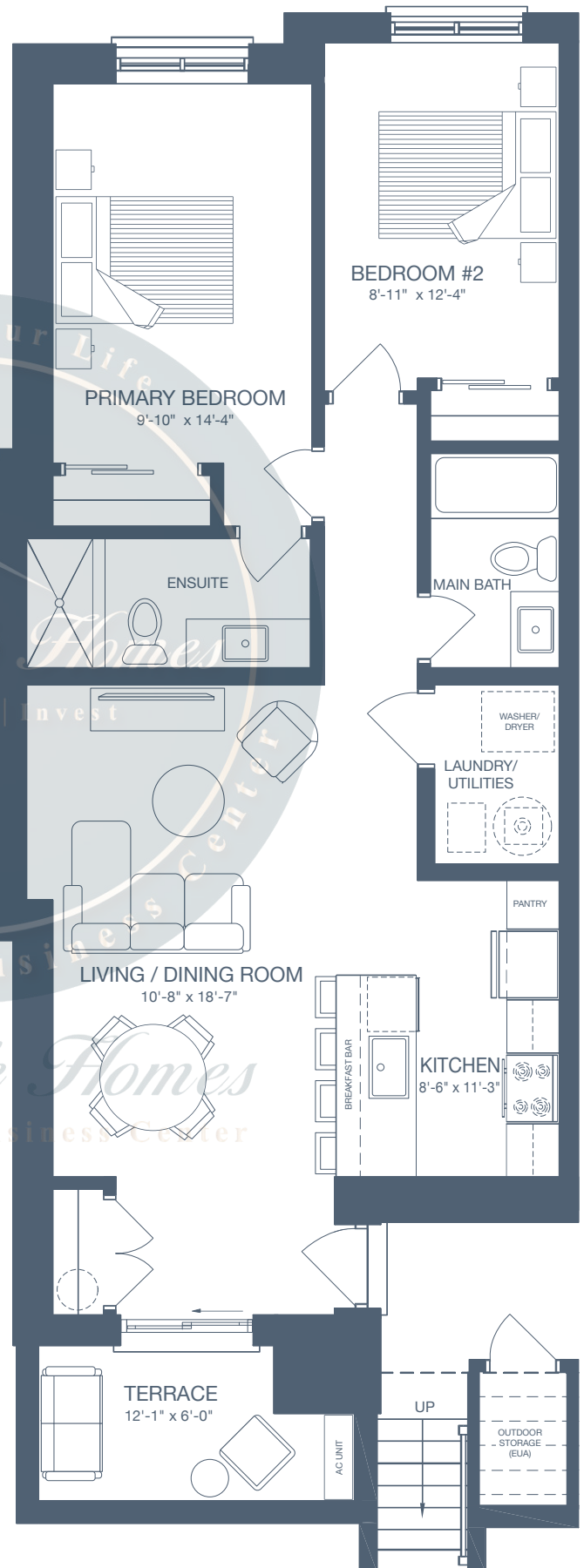
UNIT LOCATION



BLOCK A | B | C | D | E



BLOCK F | G



All drawings are an artist's concept and may vary slightly from the final product. E. & O.E. Actual usable floor space may vary from stated area, and square footage has been calculated based on usable living space according to the Tarion rules. Drawings may show optional features which may not be included in the base price. Bulkheads and box outs may be required as chases for plumbing and mechanical. Location of mechanical room equipment will be located by the builder and may change based on plan. Number of steps in front entry may vary based on grade.

Main Level

ENHANCED END UNIT

NORTHSIDE

GUELPH

UNIT DETAILS

2 BEDROOM

2 BATHROOM

BALCONY

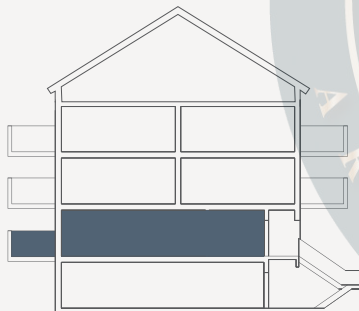
LIVING SPACE

INTERIOR 903 SQ. FT.

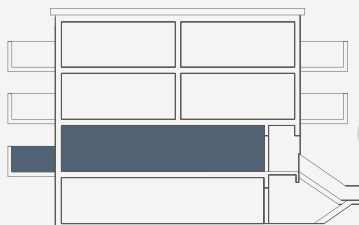
EXTERIOR 63 SQ. FT.

TOTAL 966 SQ. FT.

UNIT LOCATION



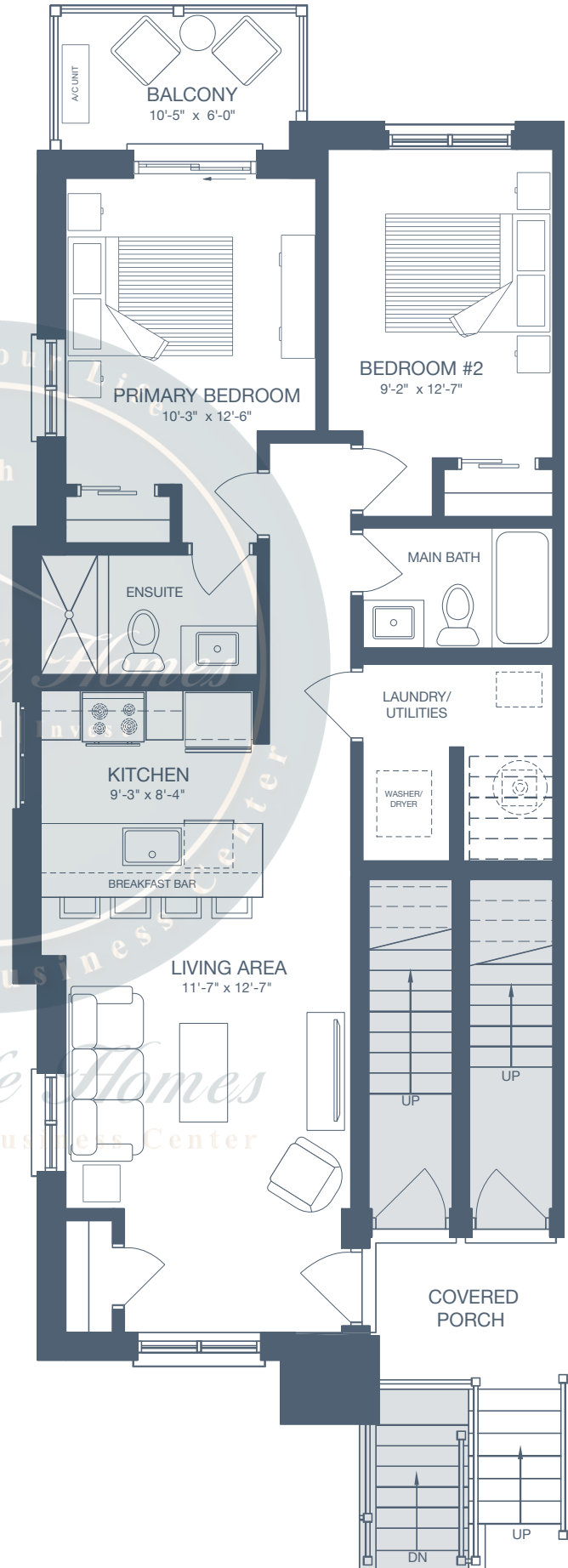
BLOCK A | B | C | D | E



BLOCK F | G



All drawings are an artist's concept and may vary slightly from the final product. E. & O.E. Actual usable floor space may vary from stated area, and square footage has been calculated based on usable living space according to the Tarion rules. Drawings may show optional features which may not be included in the base price. Bulkheads and box outs may be required as chases for plumbing and mechanical. Location of mechanical room equipment will be located by the builder and may change based on plan. Number of steps in front entry may vary based on grade.



Front Two-Storey

NORTHSIDE

GUELPH

ENHANCED END UNIT

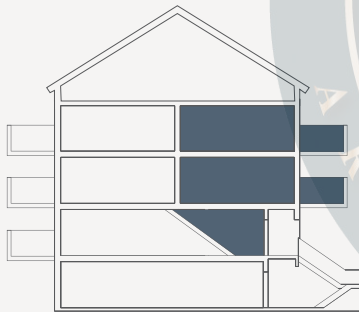
UNIT DETAILS

- 2 BEDROOM
- 2 BATHROOM
- 2 BALCONIES

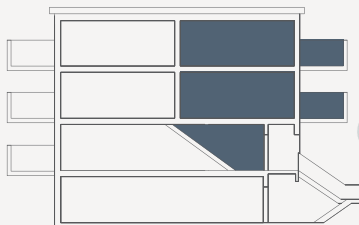
LIVING SPACE

- INTERIOR 1,142 SQ. FT.
- EXTERIOR 126 SQ. FT.
- TOTAL 1,268 SQ. FT.**

UNIT LOCATION



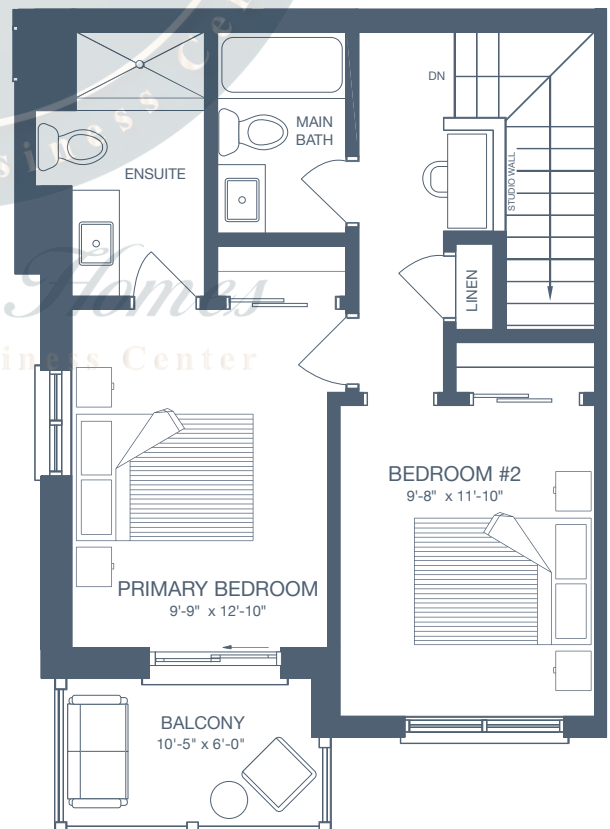
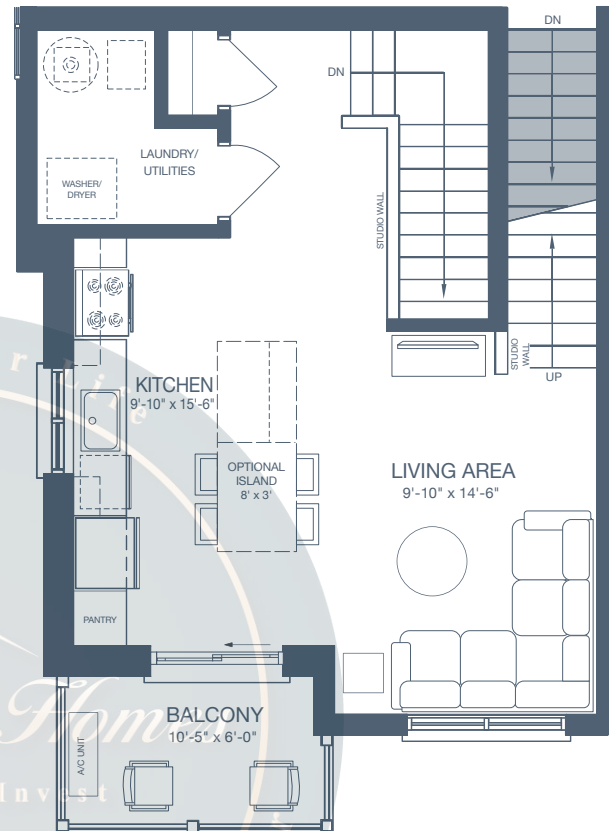
BLOCK A | B | C | D | E



BLOCK F | G



All drawings are an artist's concept and may vary slightly from the final product. E. & O.E. Actual usable floor space may vary from stated area, and square footage has been calculated based on usable living space according to the Tarion rules. Drawings may show optional features which may not be included in the base price. Bulkheads and box outs may be required as chases for plumbing and mechanical. Location of mechanical room equipment will be located by the builder and may change based on plan. Number of steps in front entry may vary based on grade.



Rear Two-Storey

NORTHSIDE

GUELPH

ENHANCED END UNIT

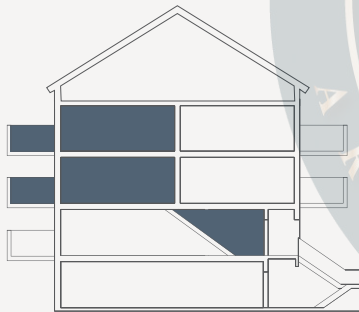
UNIT DETAILS

- 2 BEDROOM
- 2 BATHROOM
- 2 BALCONIES

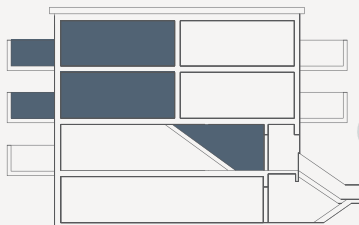
LIVING SPACE

- INTERIOR 1,152 SQ. FT.
- EXTERIOR 126 SQ. FT.
- TOTAL 1,278 SQ. FT.**

UNIT LOCATION



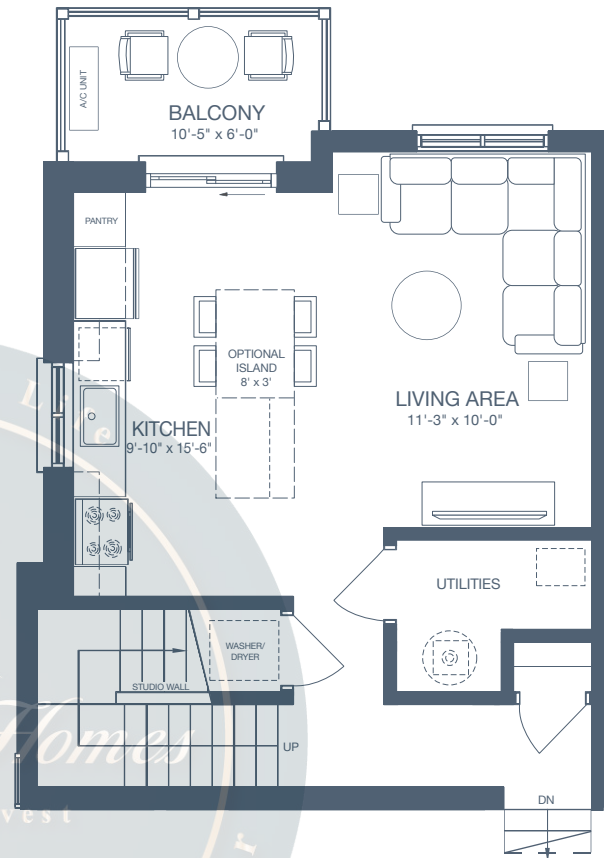
BLOCK A | B | C | D | E



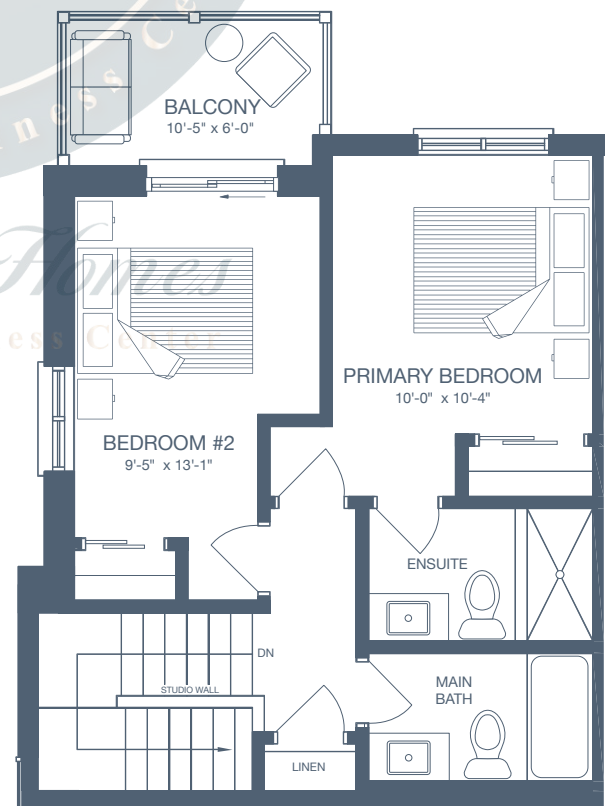
BLOCK F | G



All drawings are an artist's concept and may vary slightly from the final product. E. & O.E. Actual usable floor space may vary from stated area, and square footage has been calculated based on usable living space according to the Tarion rules. Drawings may show optional features which may not be included in the base price. Bulkheads and box outs may be required as chases for plumbing and mechanical. Location of mechanical room equipment will be located by the builder and may change based on plan. Number of steps in front entry may vary based on grade.



SECOND LEVEL



THIRD LEVEL

Spring Your Life
with
NORTHSIDE

GUELPH

New Life Homes

Buy | Sell | Invest

A Real Estate Business Center

New Life Homes

A Real Estate Business Center

