


36'
COLLECTION

THE NEWPORT

ELEV. A - 2,145 SQ. FT.
ELEV. B - 2,143 SQ. FT.
ELEV. C - 2,160 SQ. FT.

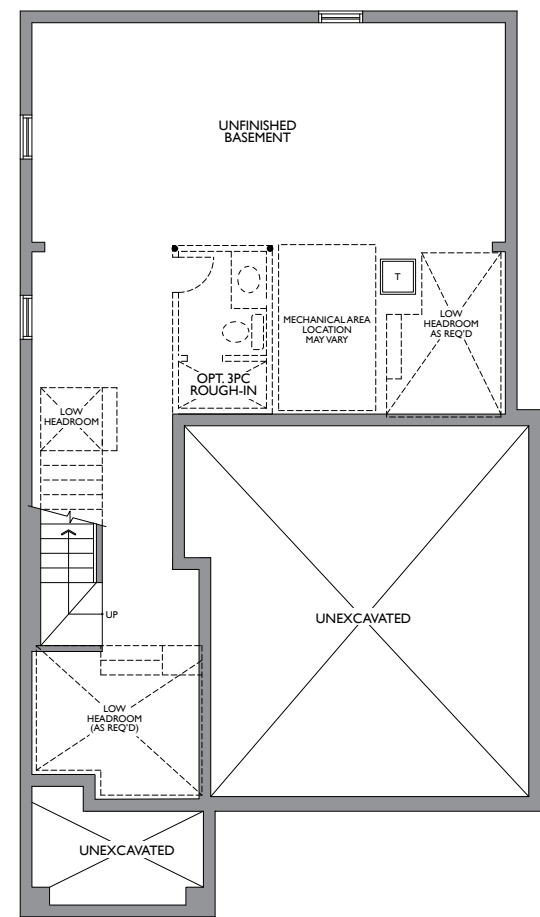


CACHET
BINBROOK
INSPIRED BY NATURE

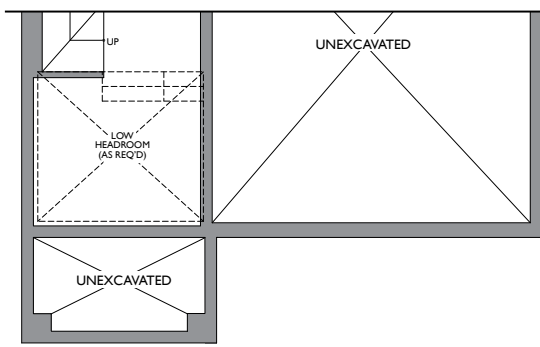


CACHET

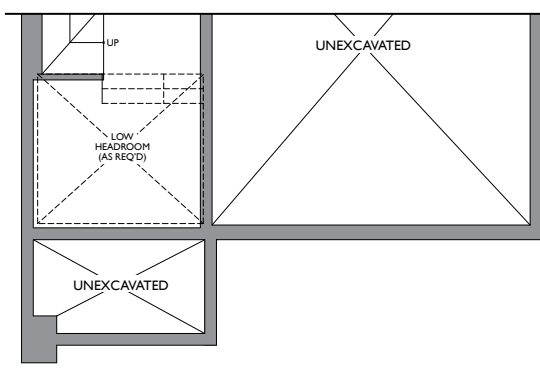
CACHET



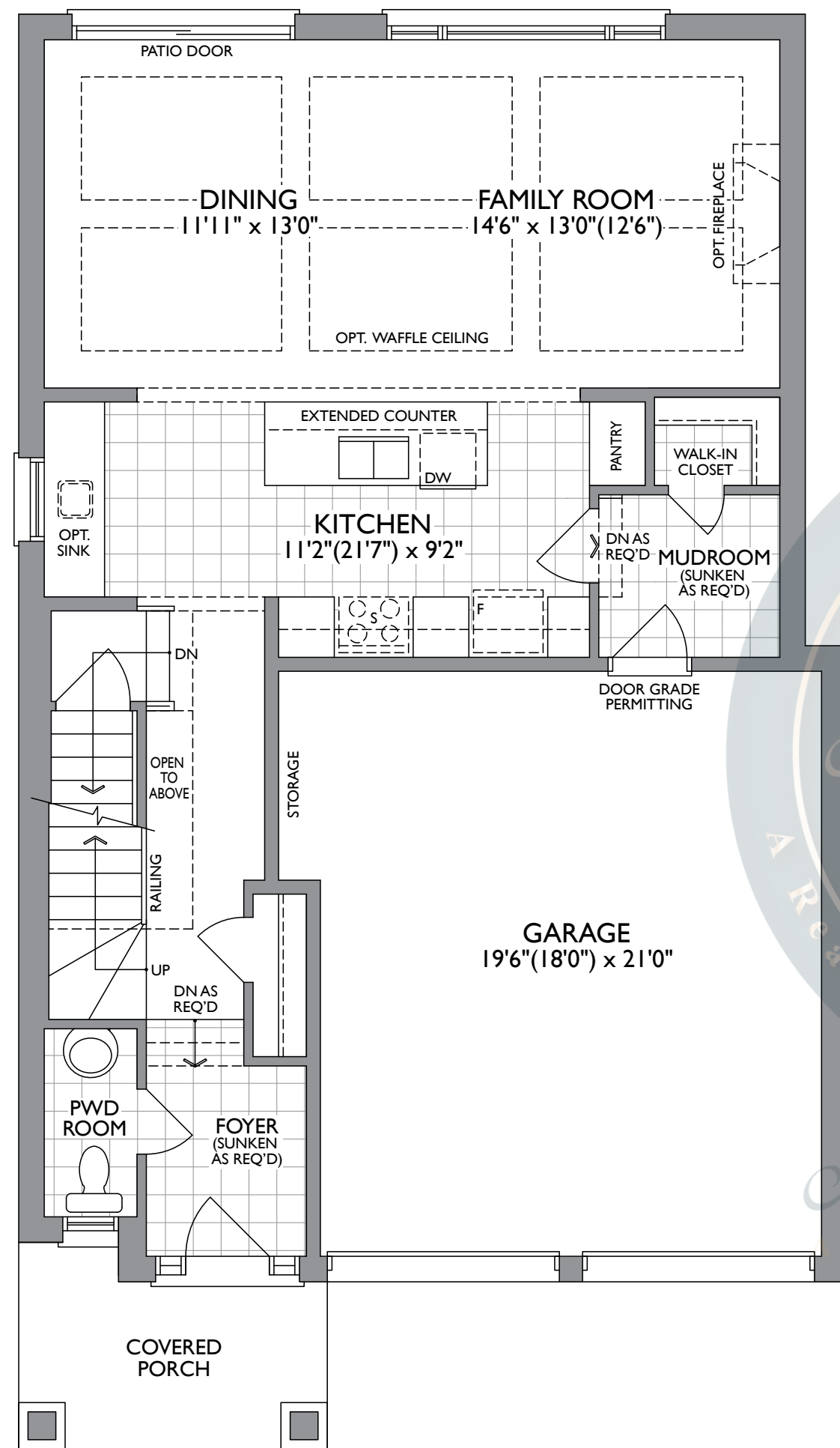
LOWER LEVEL
ELEV. A



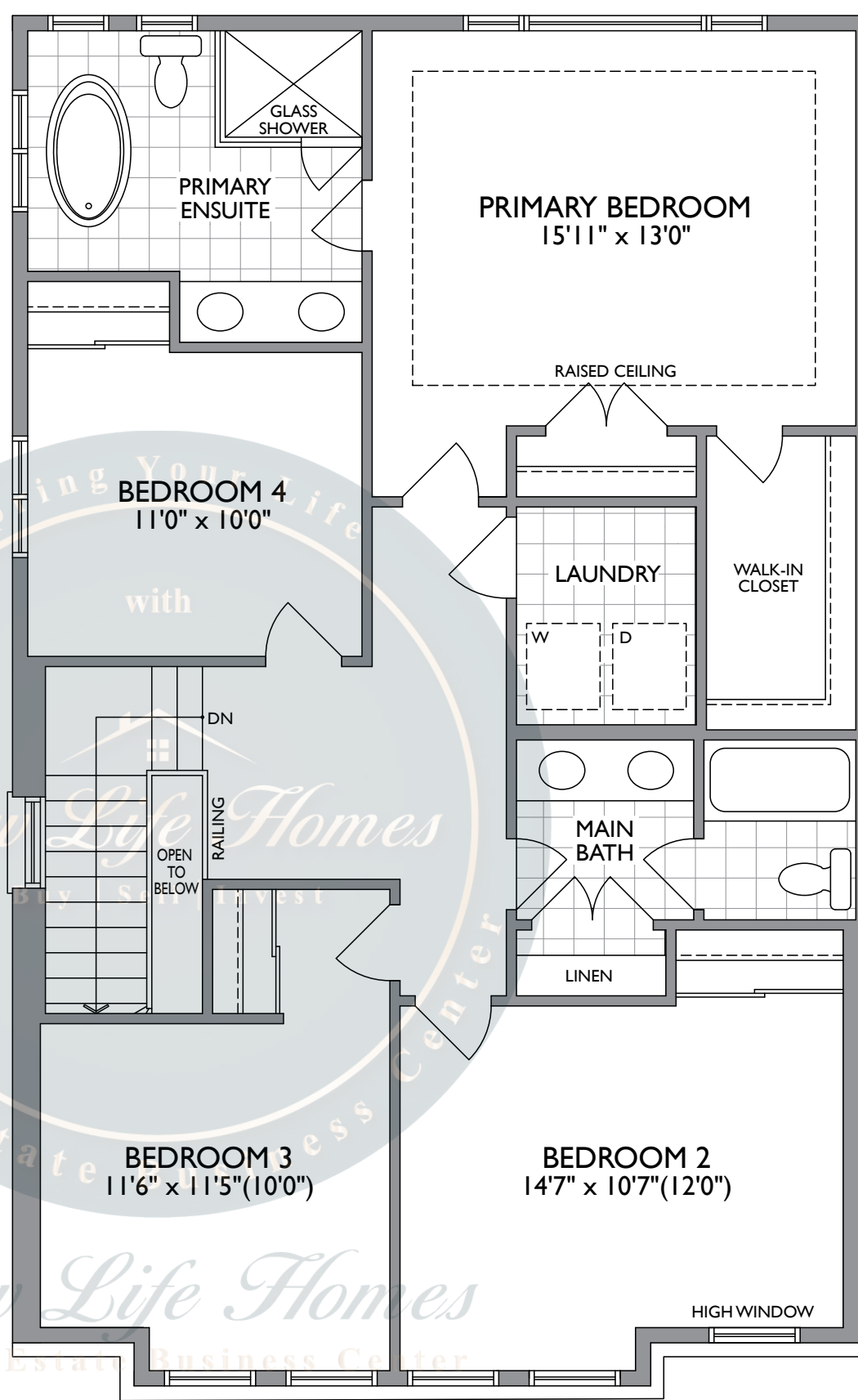
PARTIAL LOWER LEVEL
ELEV. B



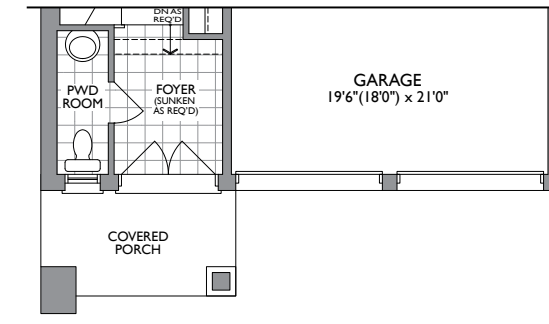
PARTIAL LOWER LEVEL
ELEV. C



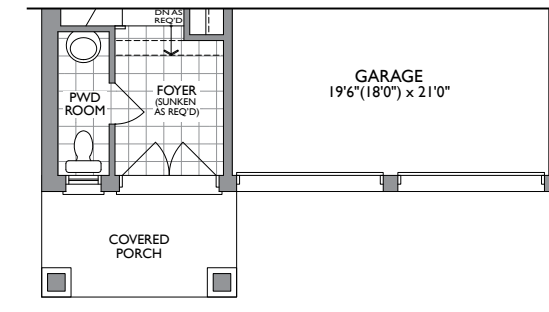
MAIN LEVEL
ELEV. A



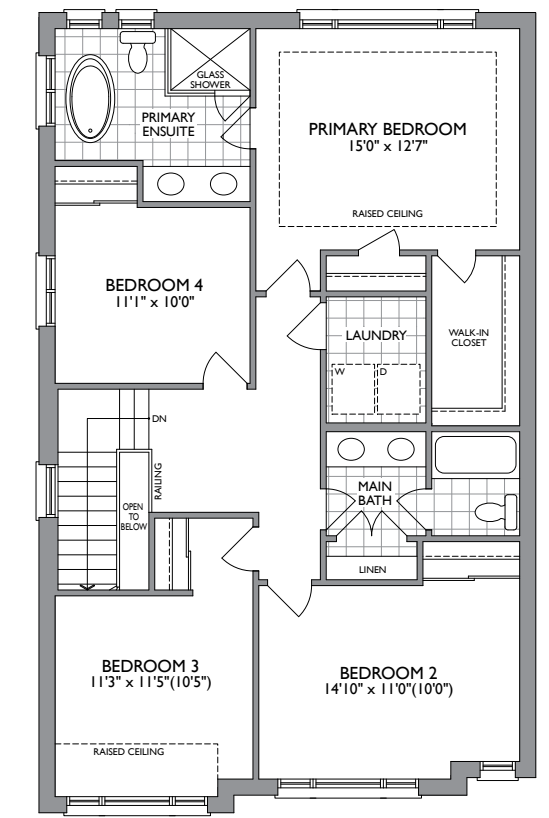
UPPER LEVEL
ELEV. A



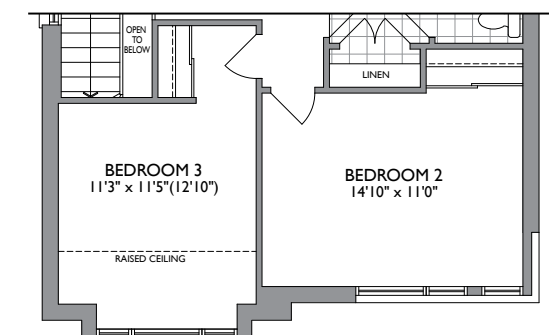
PARTIAL MAIN LEVEL
ELEV. C



PARTIAL MAIN LEVEL
ELEV. B



UPPER LEVEL
ELEV. B



PARTIAL UPPER LEVEL
ELEV. C

36' COLLECTION

	4
	3.5

THE NEWPORT

ELEV. A - 2,145 SQ. FT. ELEV. B - 2,143 SQ. FT. ELEV. C - 2,160 SQ. FT.

Dimensions, specifications, layouts, window sizes, and materials are approximate only, may vary, and are subject to change as provided in the Agreement of Purchase & Sale. All representative square footages include applicable finished lower level and open to below and above areas. Square footage varies according to architectural style. Plans may be reversed. Illustrations are artist's concept. Elevation C partial floor plans apply to Elevation B full floor plan room dimensions. E.&O.E. June 2023. 3601.



Call us: 647-215-2315 | Email: Business@newlifehomes.ca



ELEVATION B



ELEVATION C




36'
COLLECTION

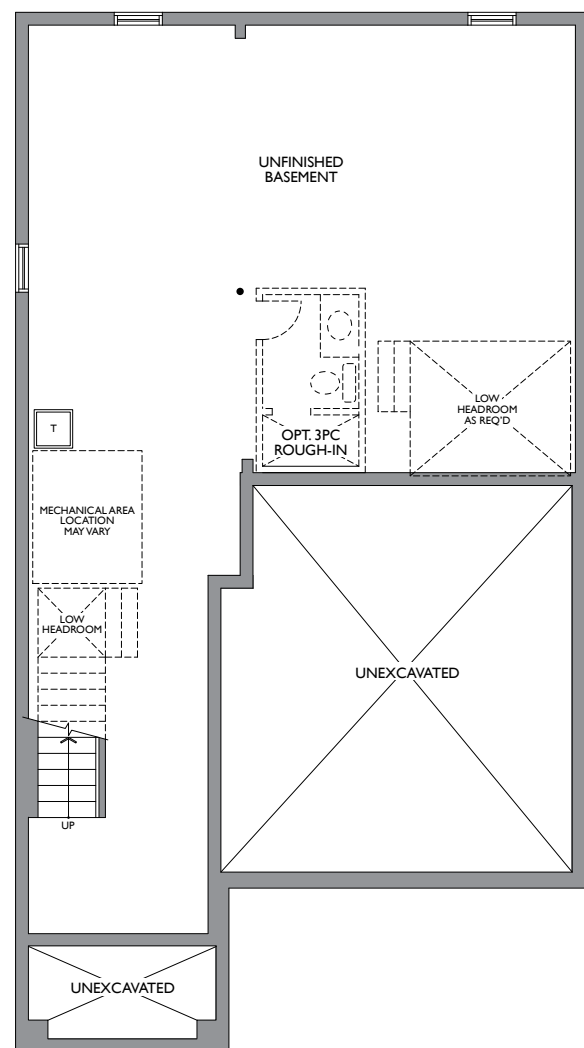
THE WHITEPINE

- ELEV. A - 2,539 SQ. FT.
- ELEV. B - 2,357 SQ. FT.
- ELEV. C - 2,359 SQ. FT.

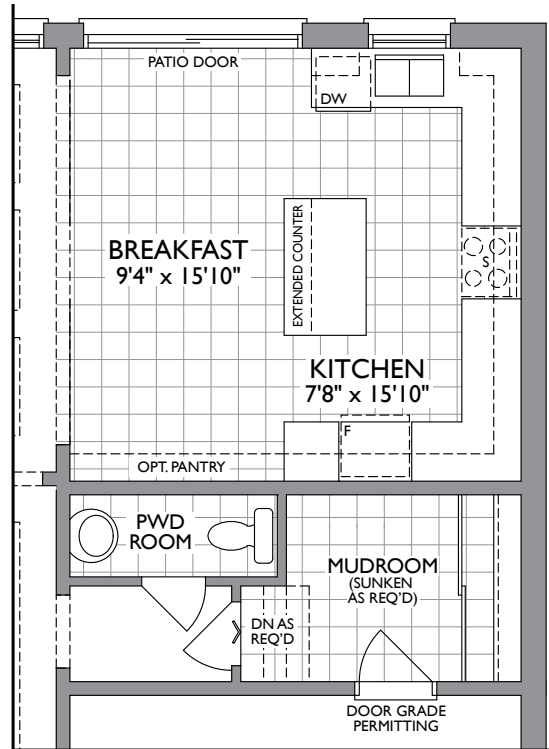



ELEVATION A

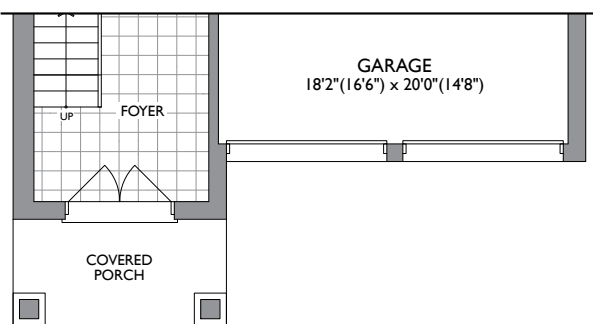




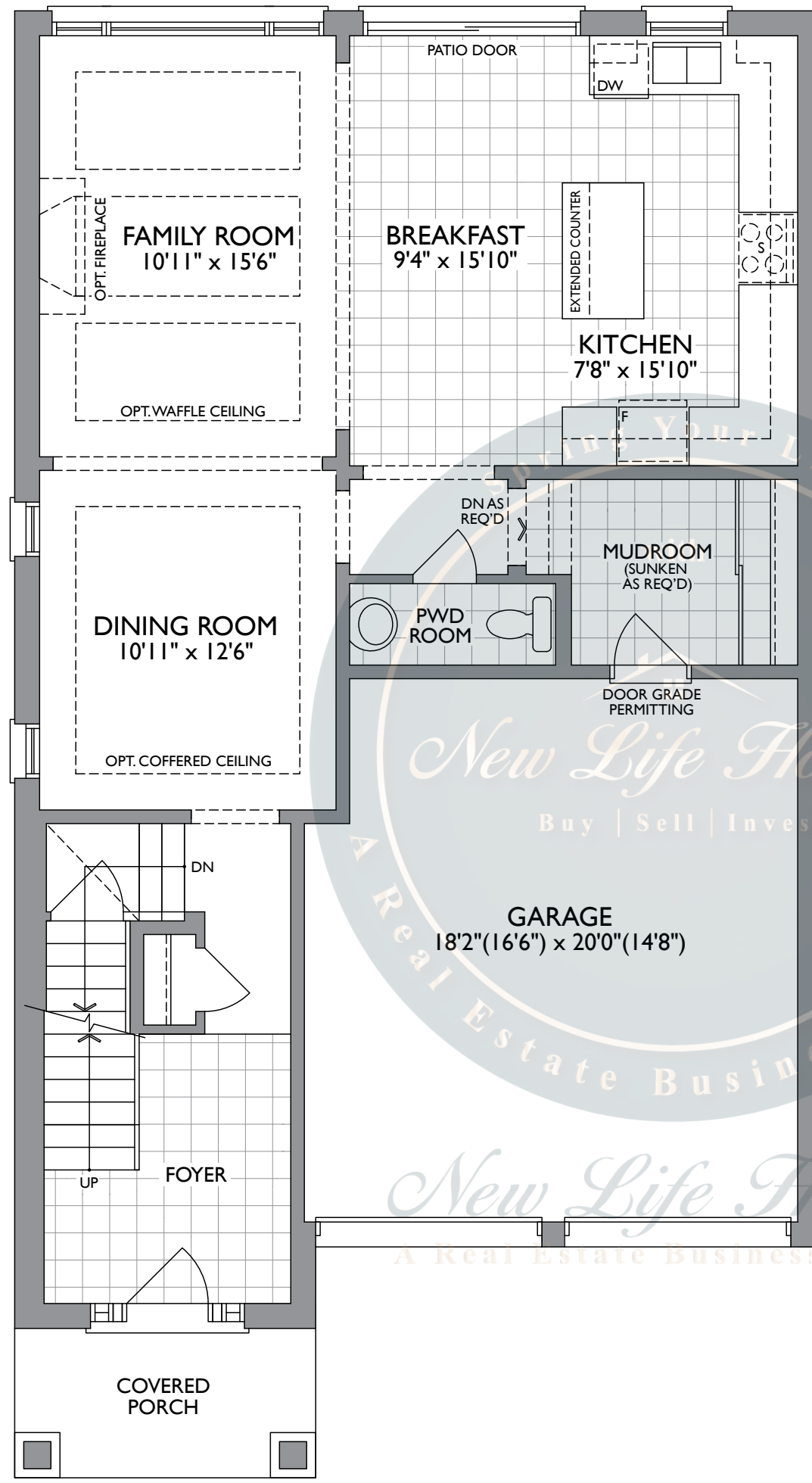
LOWER LEVEL
ELEV. A, B & C



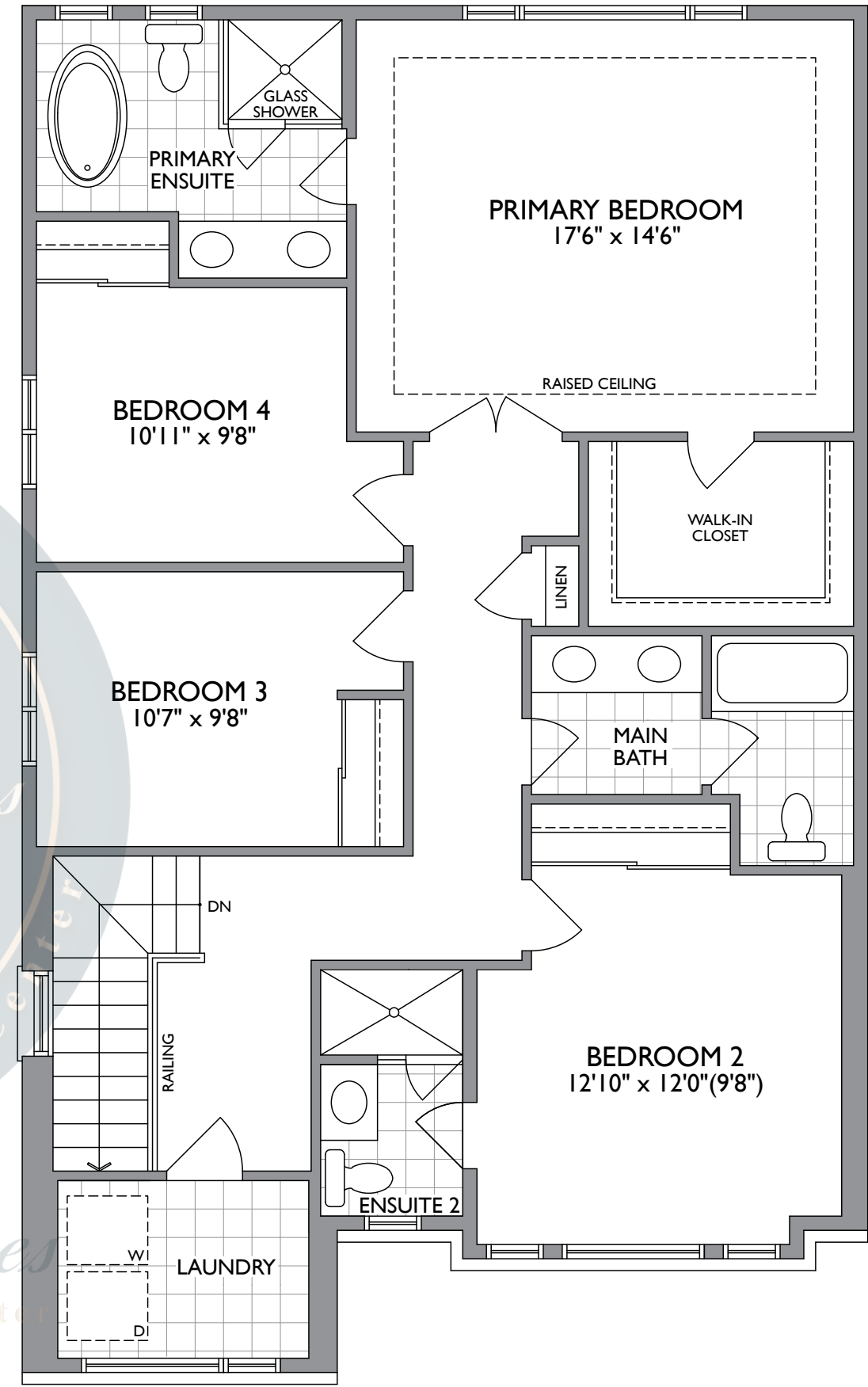
PARTIAL ALT. MAIN LEVEL
ELEV. A, B & C



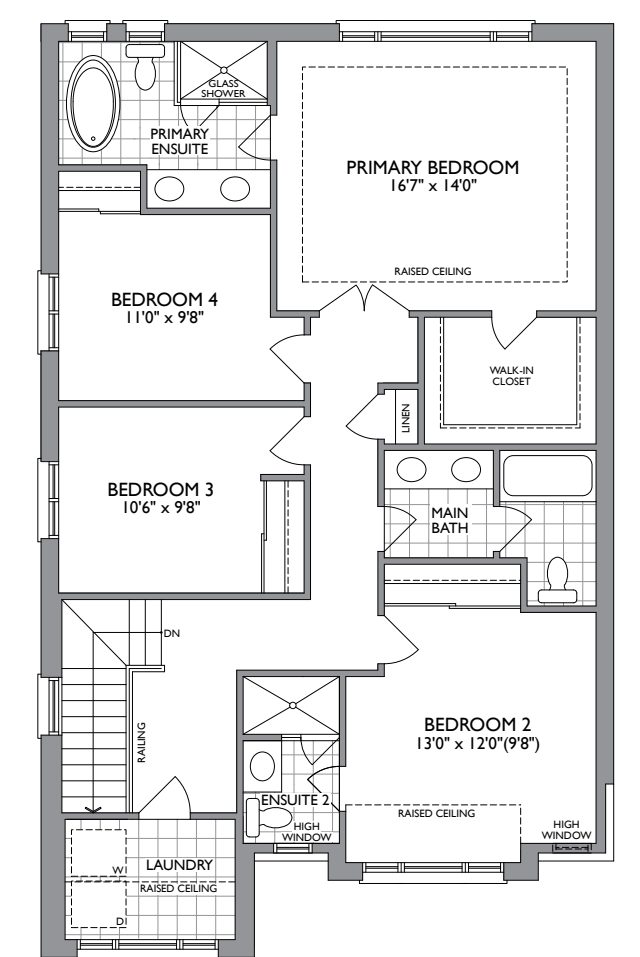
PARTIAL MAIN LEVEL
ELEV. B & C



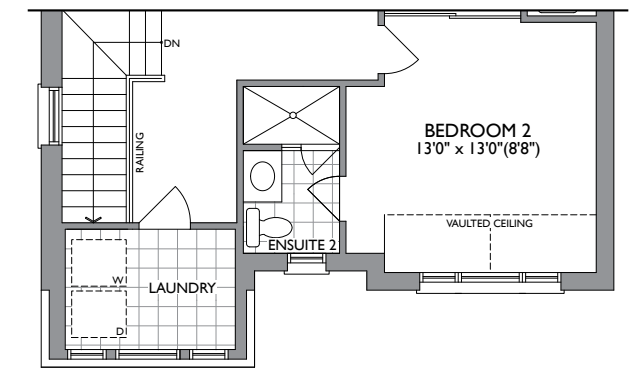
MAIN LEVEL
ELEV. A



UPPER LEVEL
ELEV. A



UPPER LEVEL
ELEV. B



PARTIAL UPPER LEVEL
ELEV. C

36' COLLECTION

	4
	3.5


THE WHITEPINE

ELEV. A - 2,359 SQ. FT. ELEV. B - 2,357 SQ. FT. ELEV. C - 2,359 SQ. FT.

Dimensions, specifications, layouts, window sizes, and materials are approximate only, may vary, and are subject to change as provided in the Agreement of Purchase & Sale. All representative square footages include applicable finished lower level and open to below and above areas. Square footage varies according to architectural style. Plans may be reversed. Illustrations are artist's concept. Elevation C partial floor plans apply to Elevation B full floor plan room dimensions. E.&O.E. May 23, 2020.



Call us: 647-215-2315 | Email: Business@newlifehomes.ca


36'
COLLECTION

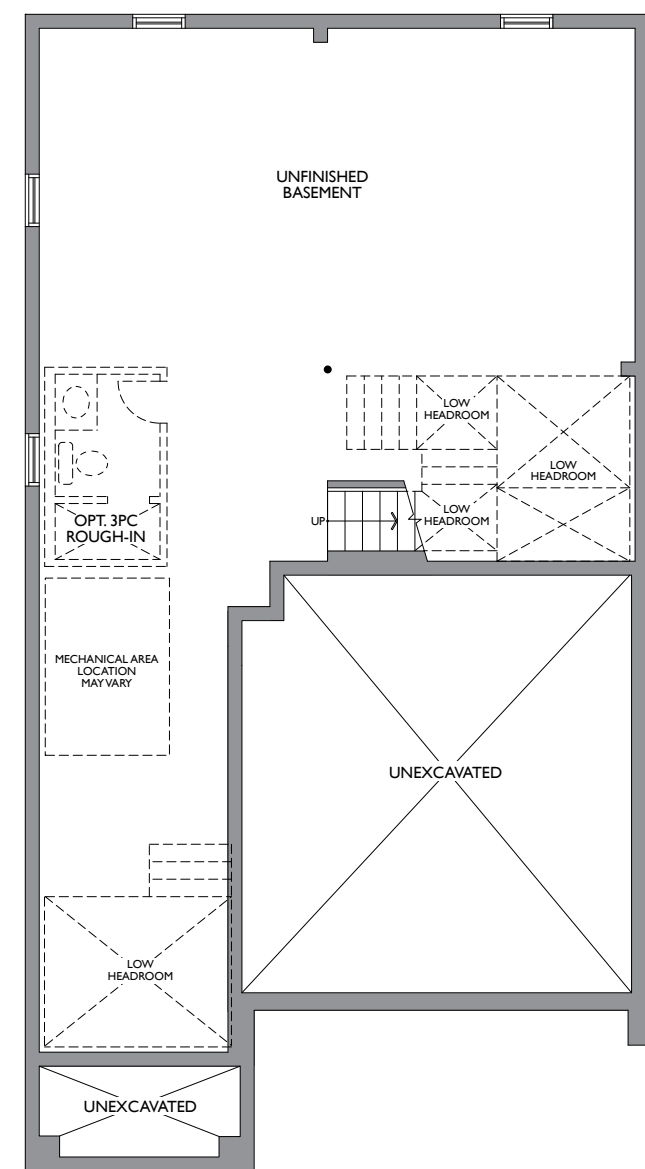
THE POPLAR

ELEV. A - 2,503 SQ. FT.

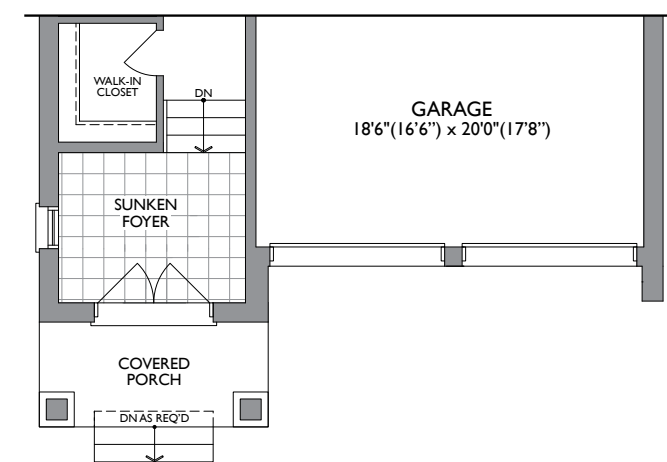
ELEV. B - 2,505 SQ. FT.

ELEV. C - 2,504 SQ. FT.

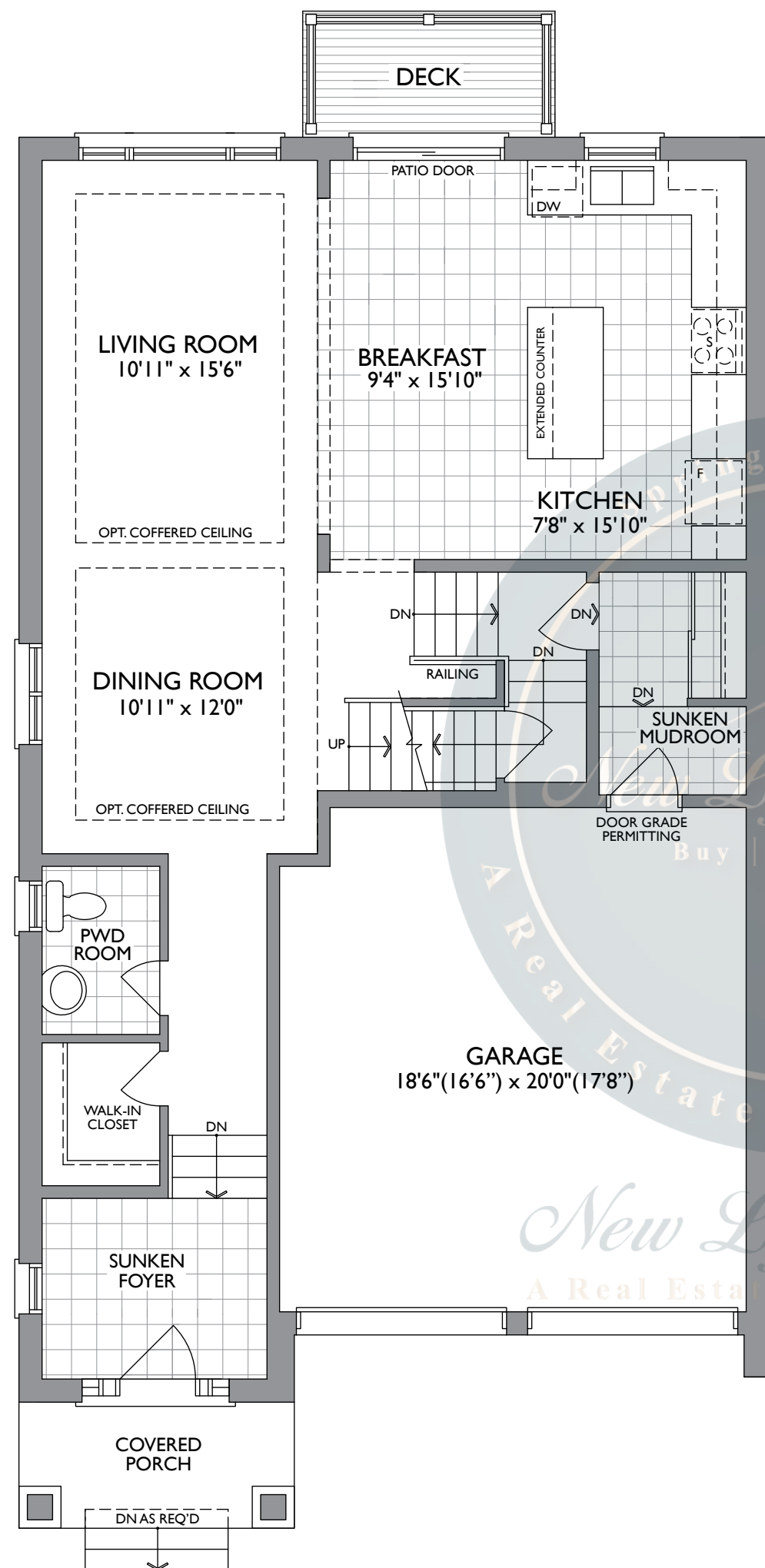


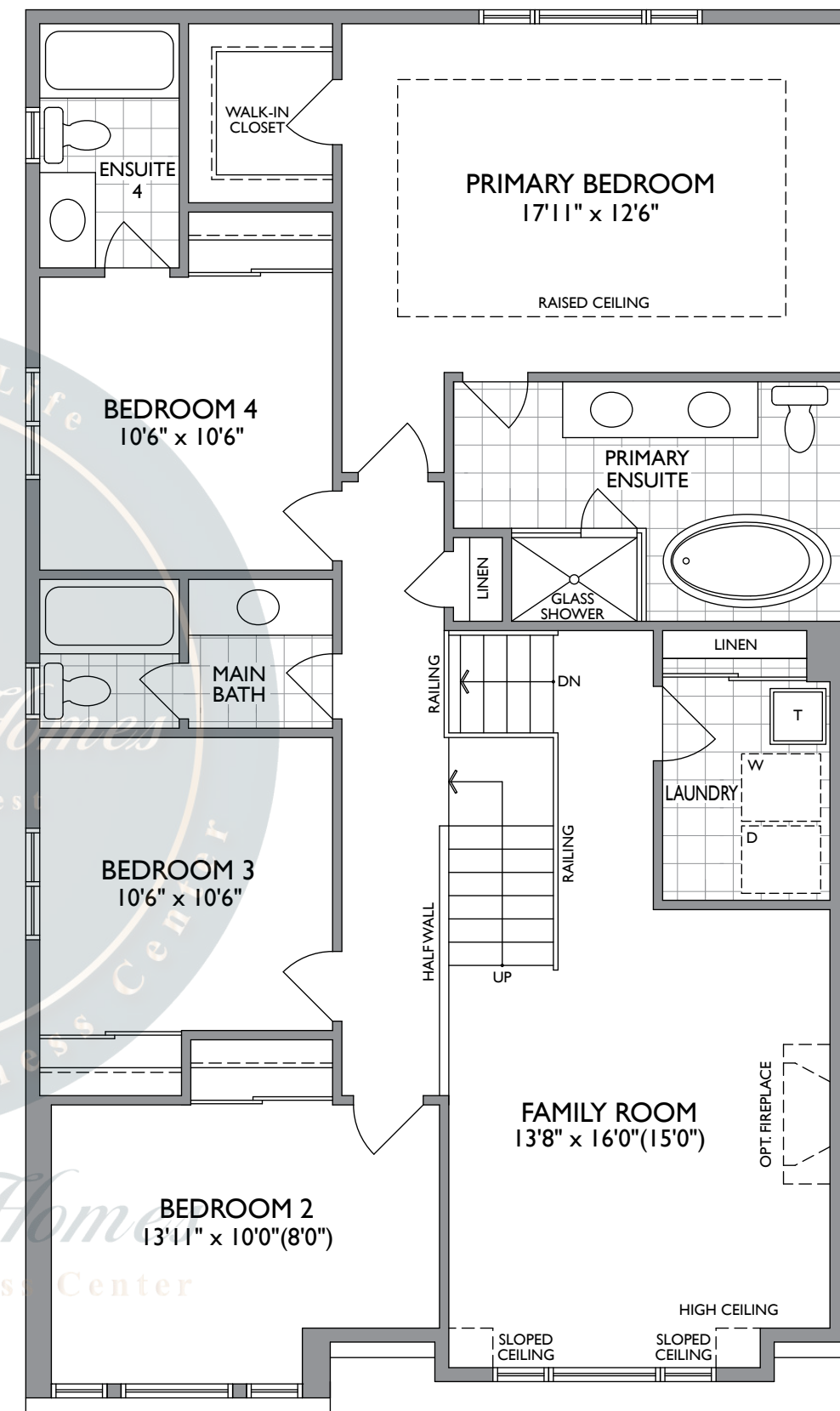
LOWER LEVEL
ELEV. A, B & C



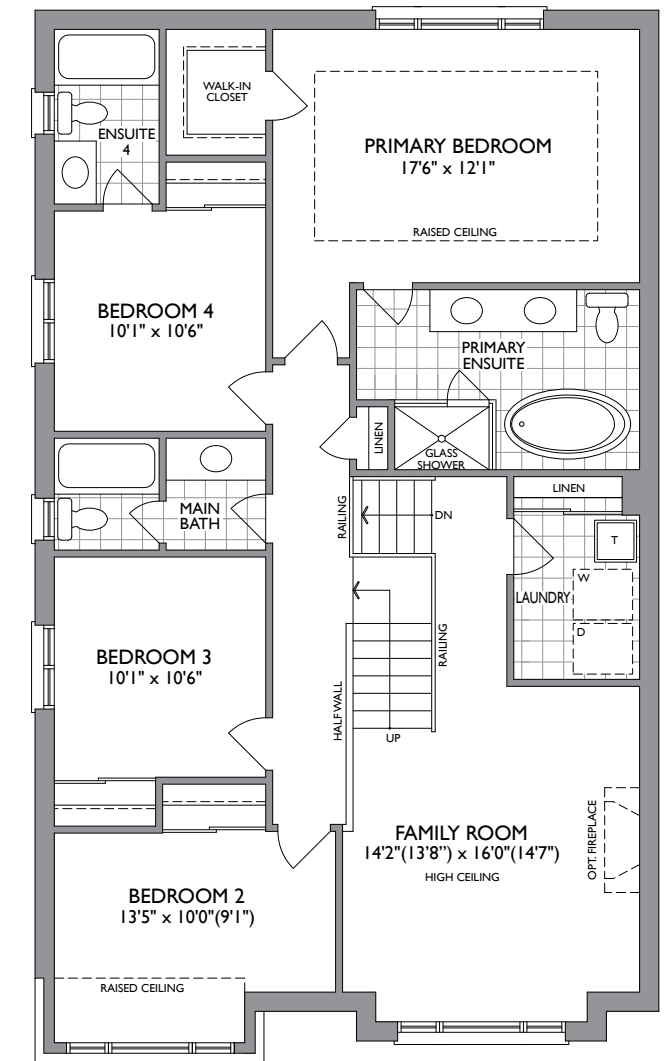
PARTIAL MAIN LEVEL
ELEV. B & C



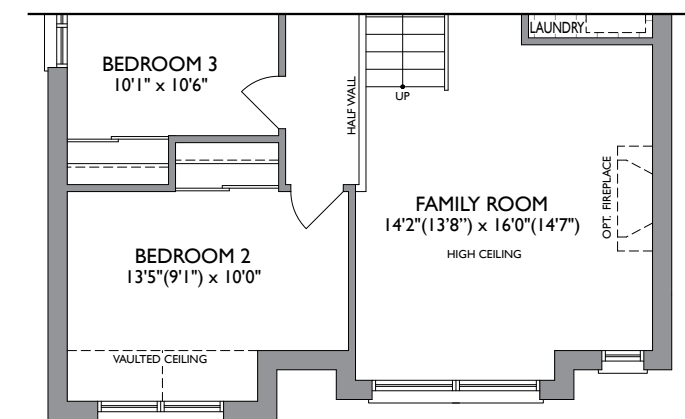
MAIN LEVEL
ELEV. A



UPPER LEVEL
ELEV. A



UPPER LEVEL
ELEV. B



PARTIAL UPPER LEVEL
ELEV. C

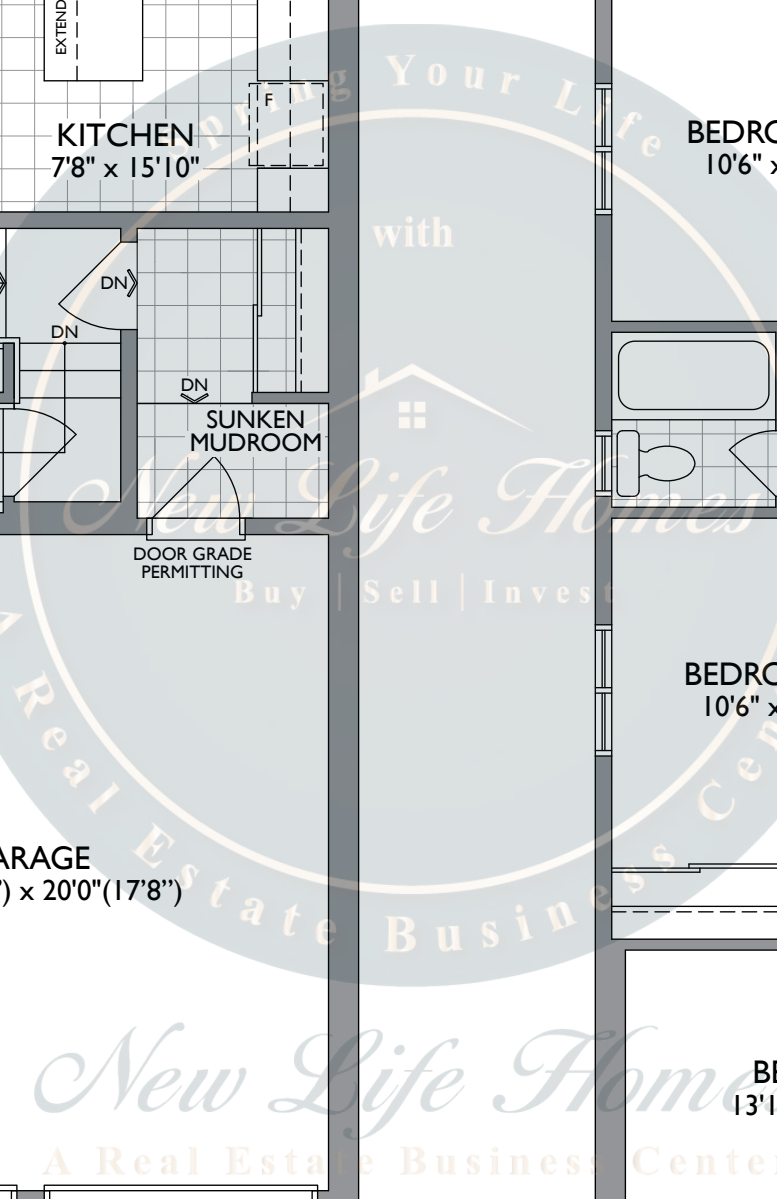
36' COLLECTION

	4
	3.5

THE POPLAR

ELEV. A - 2,503 SQ. FT. ELEV. B - 2,505 SQ. FT. ELEV. C - 2,504 SQ. FT.

MAIN LEVEL
ELEV. A



Dimensions, specifications, layouts, window sizes, and materials are approximate only, may vary, and are subject to change as provided in the Agreement of Purchase & Sale. All representative square footages include applicable finished lower level and open to below and above areas. Square footage varies according to architectural style. Plans may be reversed. Illustrations are artist's concept. Elevation C partial floor plans apply to Elevation B full floor plan room dimensions. E.&O.E. June 2023. 3603.






36'
COLLECTION

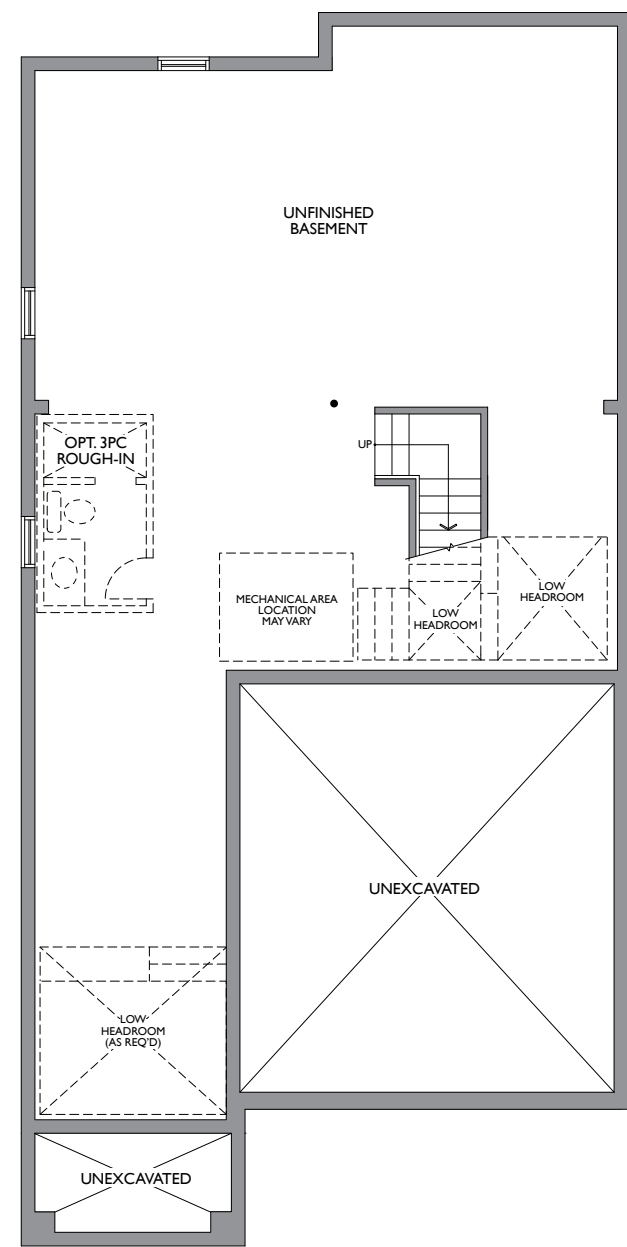
THE LAUREL

ELEV. A - 2,680 SQ. FT.

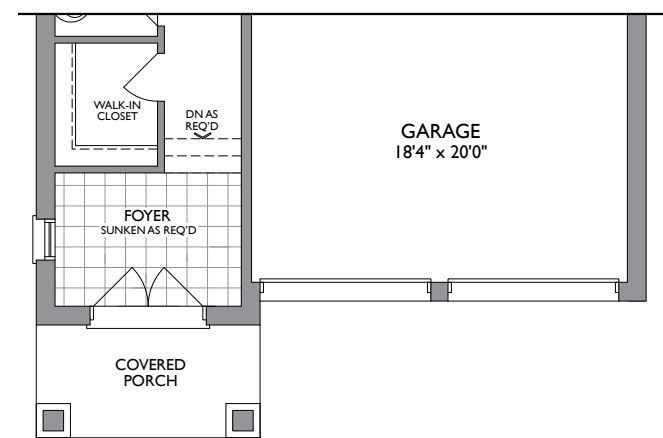
ELEV. B - 2,688 SQ. FT.

ELEV. C - 2,666 SQ. FT.

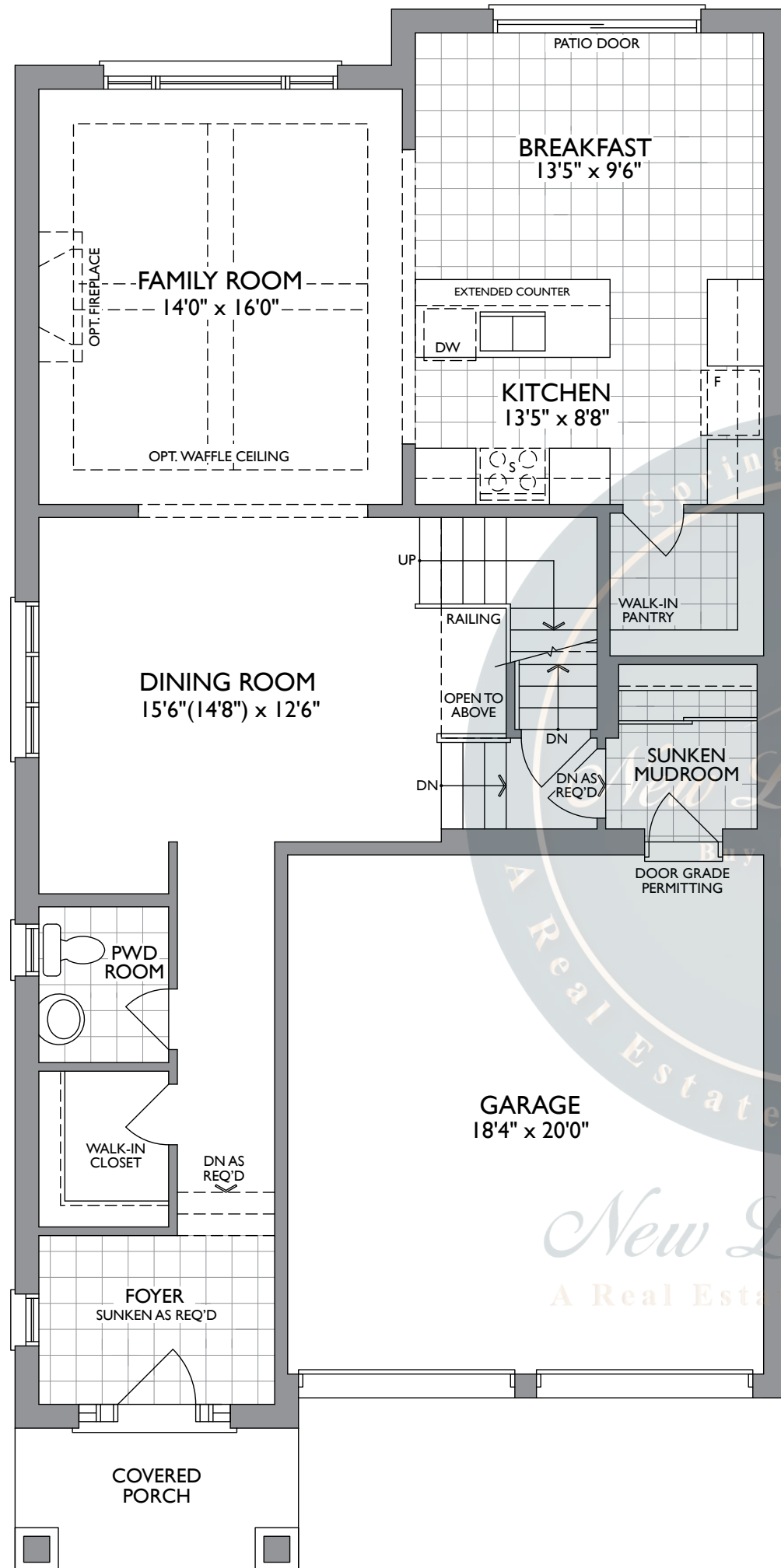


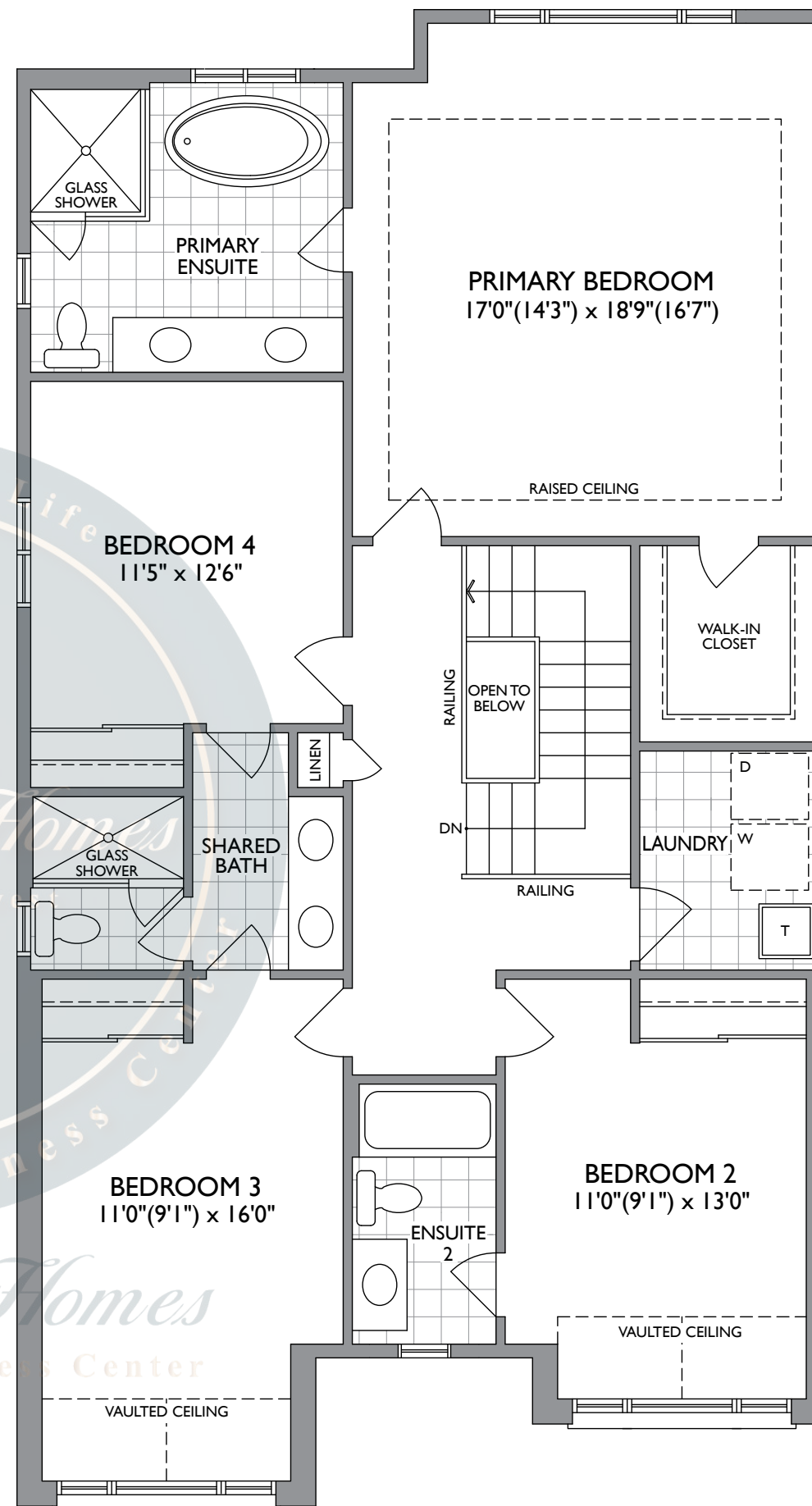
LOWER LEVEL
ELEV. A, B & C



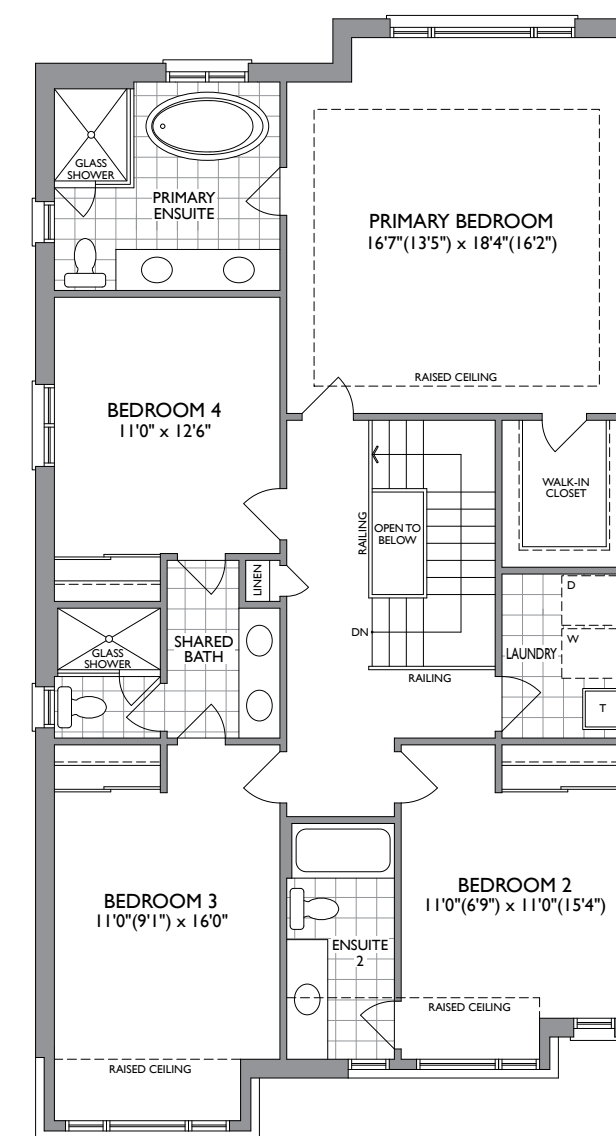
PARTIAL MAIN LEVEL
ELEV. B & C



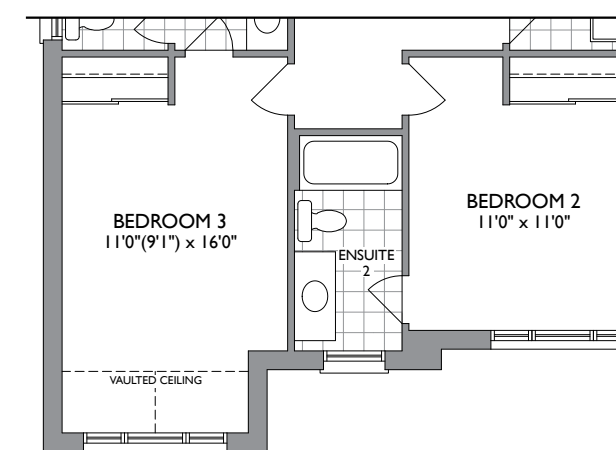
MAIN LEVEL
ELEV. A



UPPER LEVEL
ELEV. A



UPPER LEVEL
ELEV. B



PARTIAL UPPER LEVEL
ELEV. C

36' COLLECTION

4

3.5

THE LAUREL

ELEV. A - 2,680 SQ. FT. ELEV. B - 2,688 SQ. FT. ELEV. C - 2,666 SQ. FT.

Dimensions, specifications, layouts, window sizes, and materials are approximate only, may vary, and are subject to change as provided in the Agreement of Purchase & Sale. All representative square footages include applicable finished lower level and open to below and above areas. Square footage varies according to architectural style. Plans may be reversed. Illustrations are artist's concept. Add to disclaimer: Elevation C partial floor plans apply to Elevation B full floor plan room dimensions. E&O.E. June 2023. 3604.



Call us: 647-215-2315 | Email: Business@newlifelifehomes.ca



ELEVATION B



ELEVATION C



36'
COLLECTION

THE CLOVER

ELEV. A - 2,792 SQ. FT.

ELEV. B - 2,781 SQ. FT.

ELEV. C - 2,801 SQ. FT.



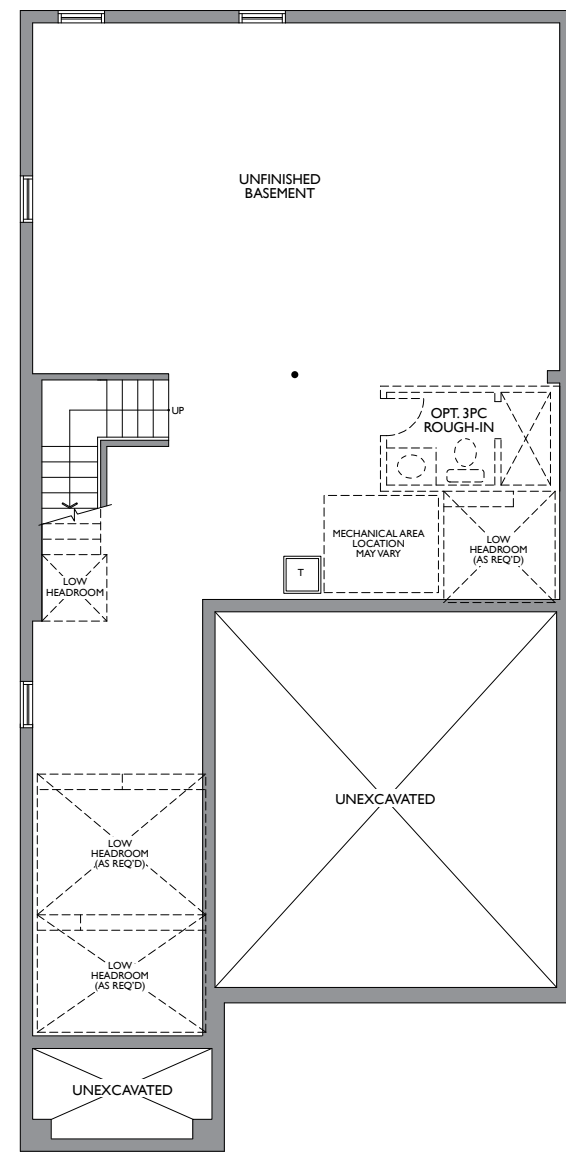
CACHET
BINBROOK
INSPIRED BY NATURE

CACHET

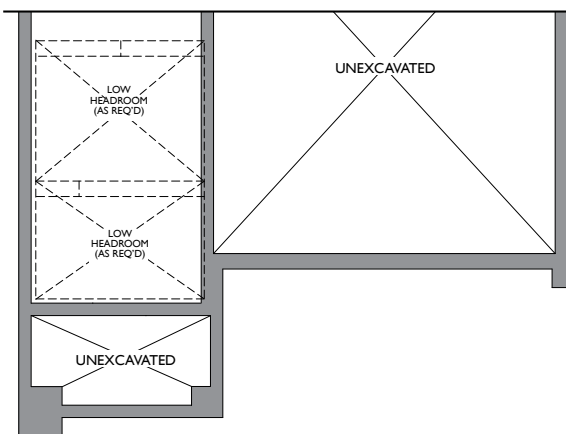
CACHET



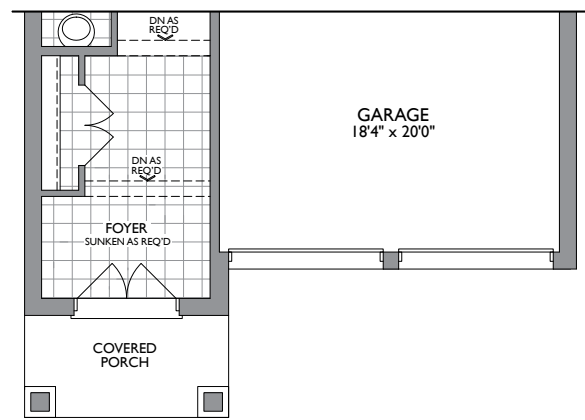
ELEVATION A



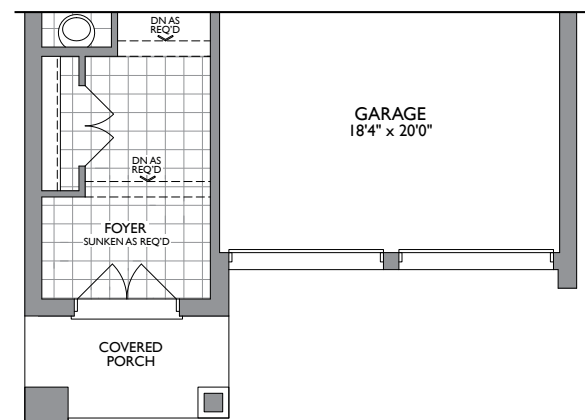
LOWER LEVEL ELEV. A & B



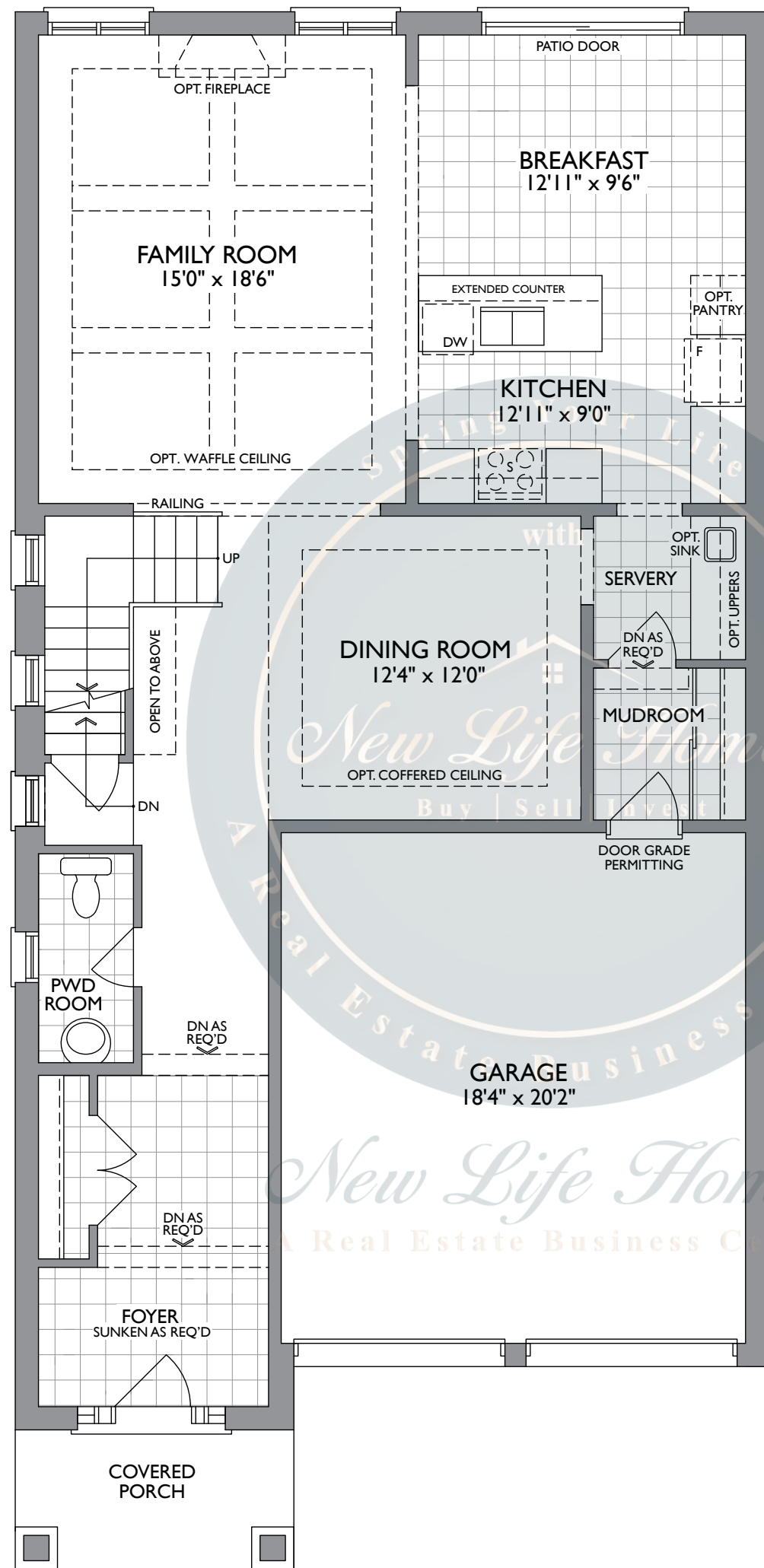
PARTIAL LOWER LEVEL ELEV. C



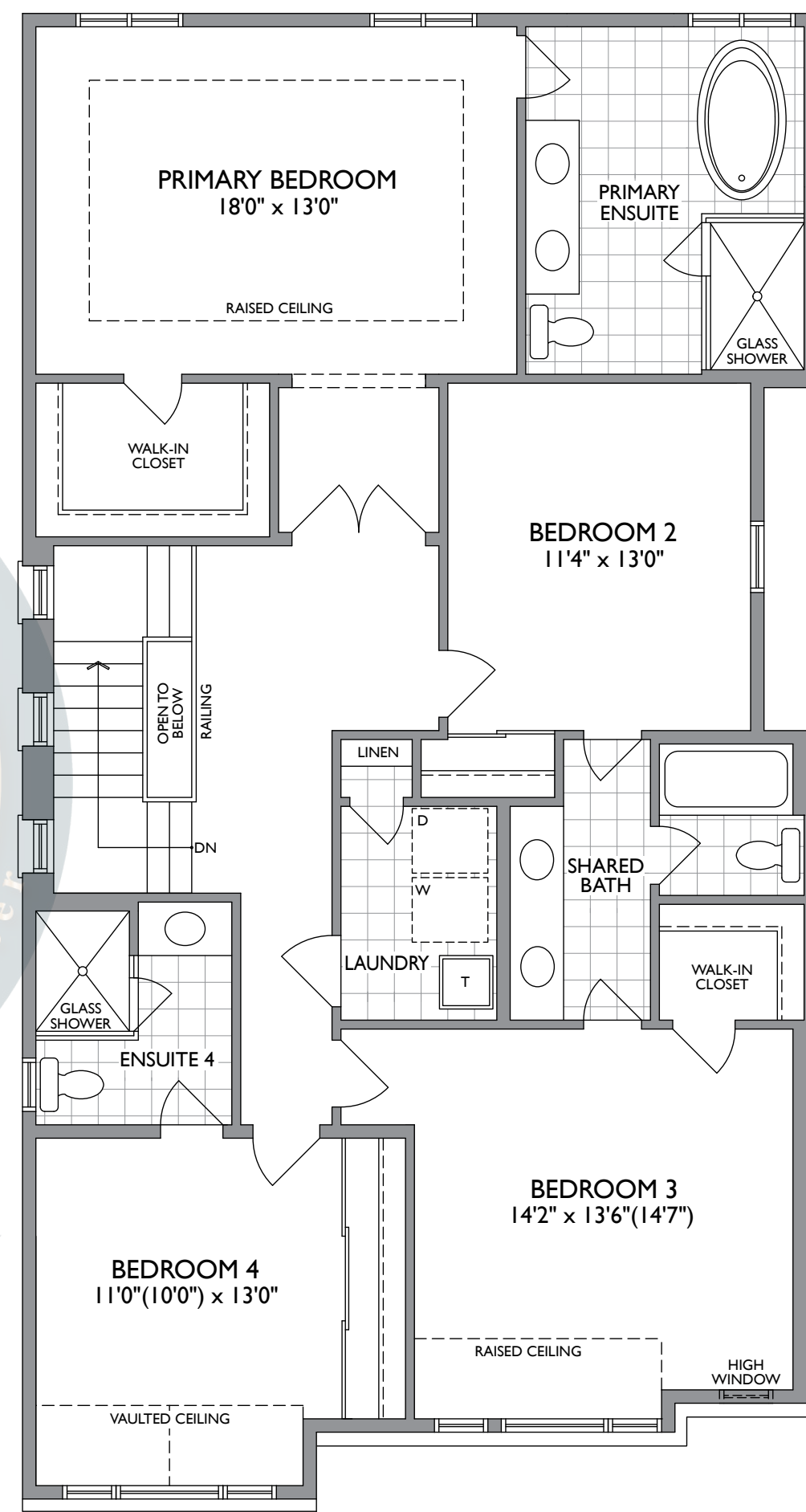
PARTIAL MAIN LEVEL ELEV. B



PARTIAL MAIN LEVEL ELEV. C



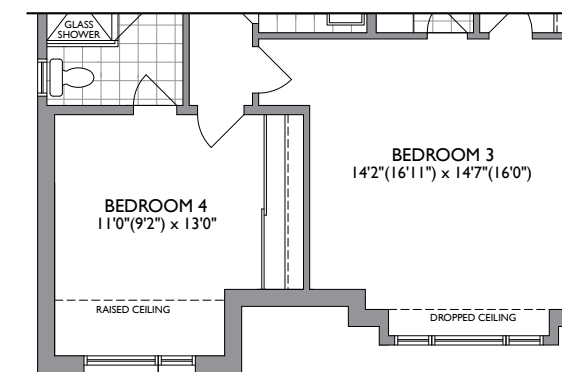
MAIN LEVEL ELEV. A



UPPER LEVEL ELEV. A



UPPER LEVEL ELEV. B



PARTIAL UPPER LEVEL ELEV. C

36' COLLECTION

4


3.5

THE CLOVER

ELEV. A - 2,792 SQ. FT. ELEV. B - 2,781 SQ. FT. ELEV. C - 2,801 SQ. FT.

Dimensions, specifications, layouts, window sizes, and materials are approximate only, may vary, and are subject to change as provided in the Agreement of Purchase & Sale. All representative square footages include applicable finished lower level and open to below and above areas. Square footage varies according to architectural style. Plans may be reversed. Illustrations are artist's concept. Elevation C partial floor plans apply to Elevation B full floor plan room dimensions. E.&O.E. June 2023. 3605.




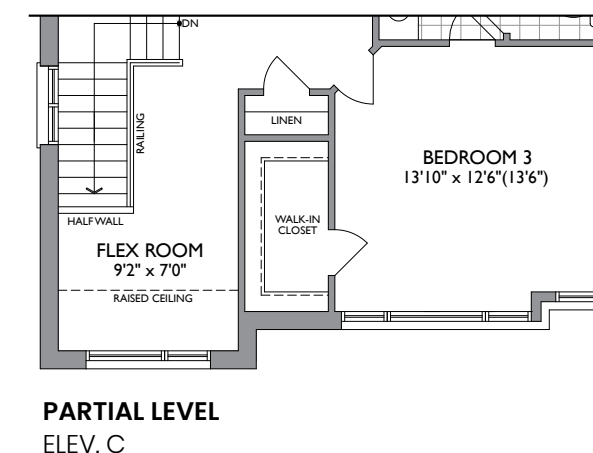
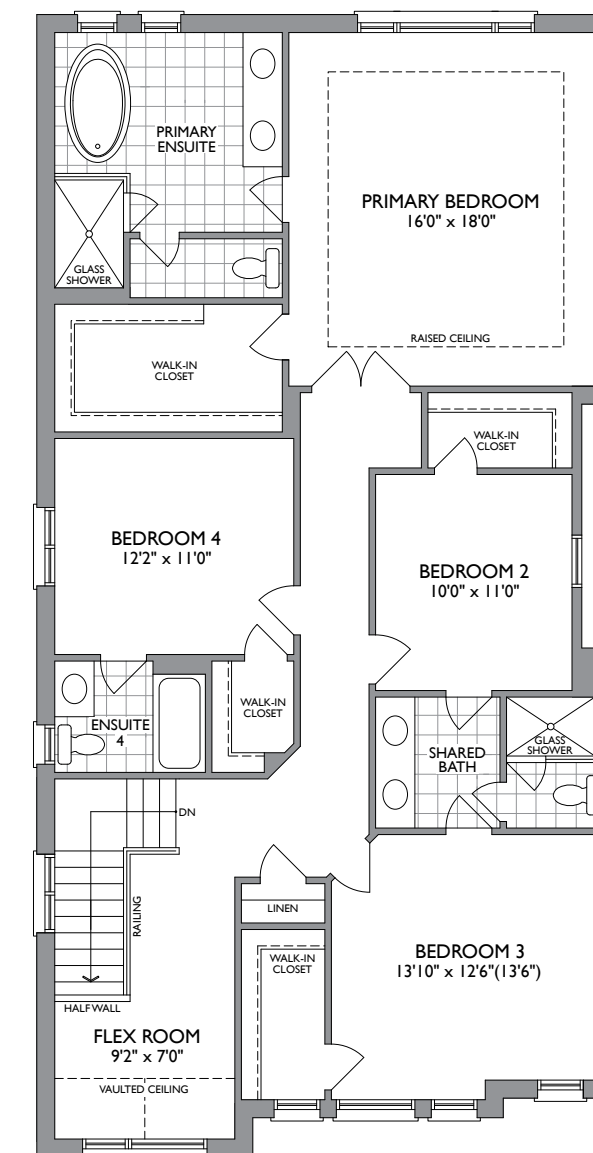
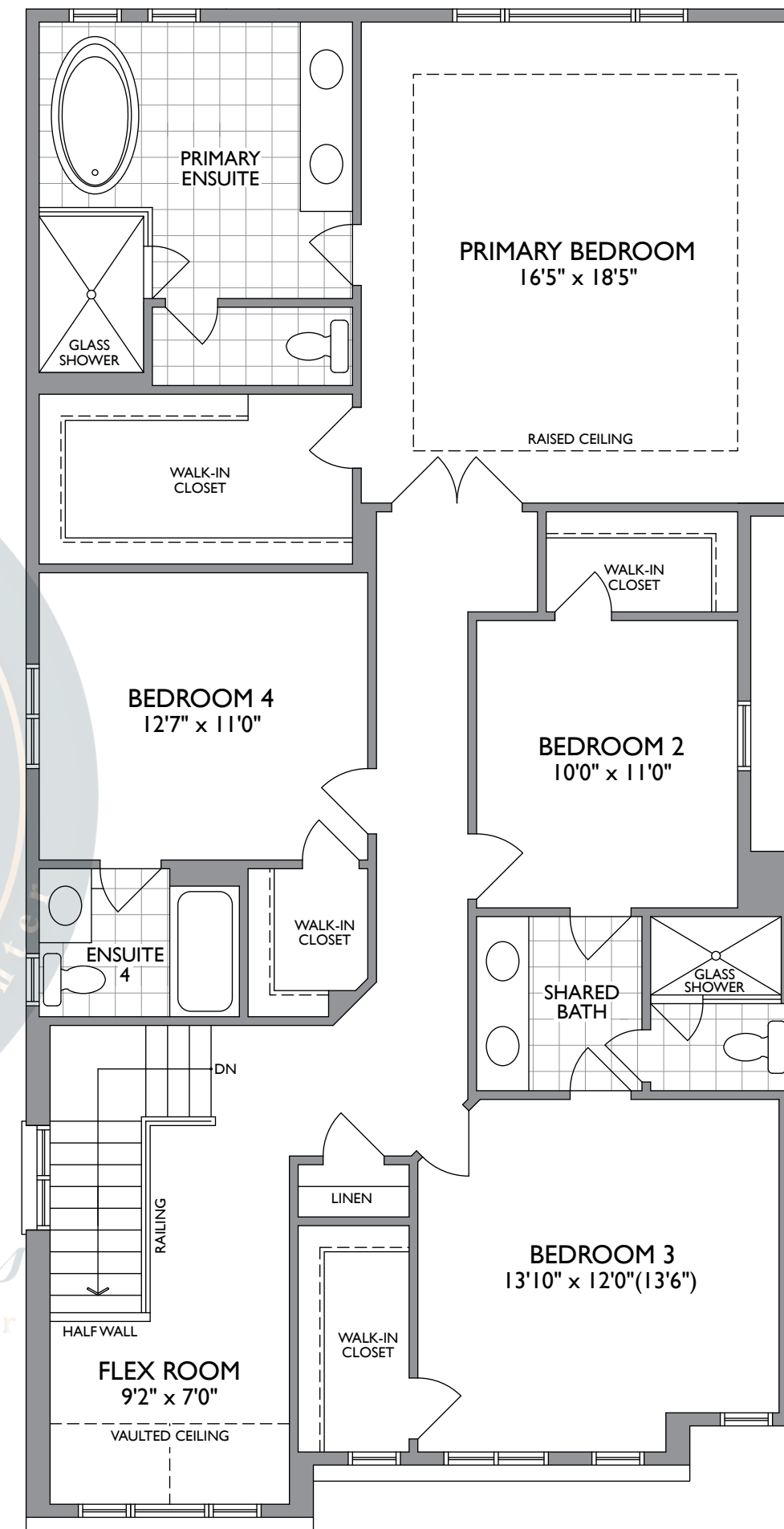
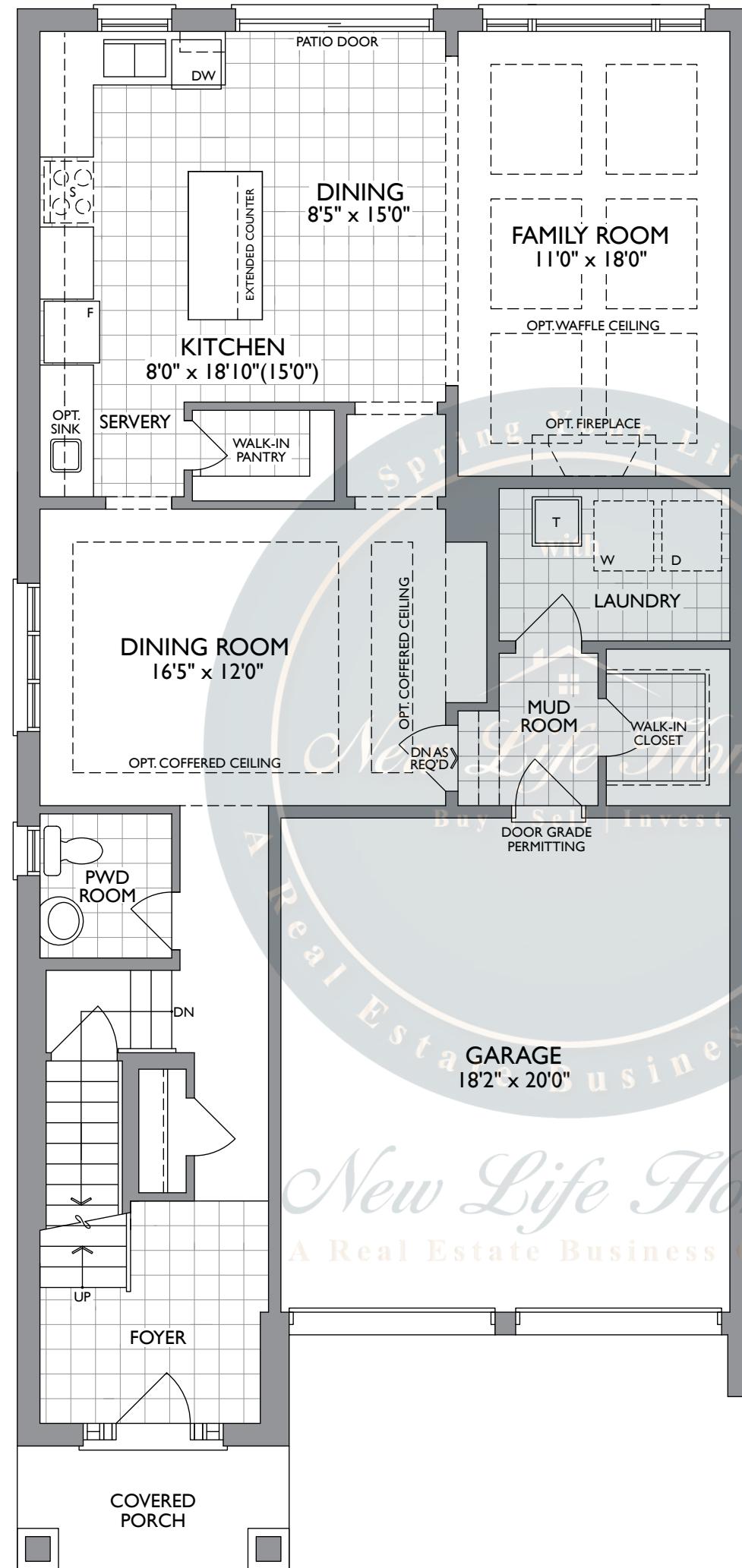
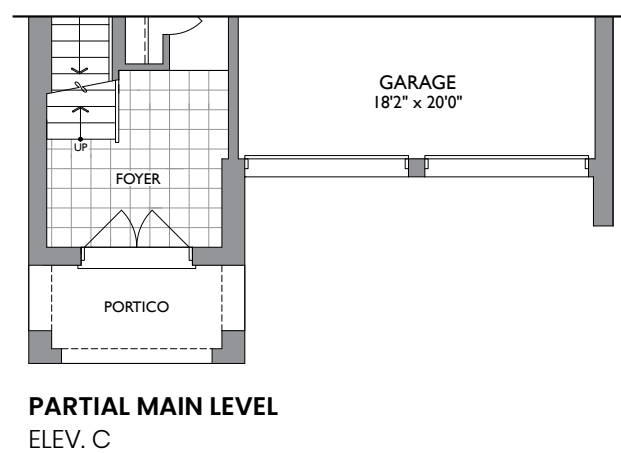
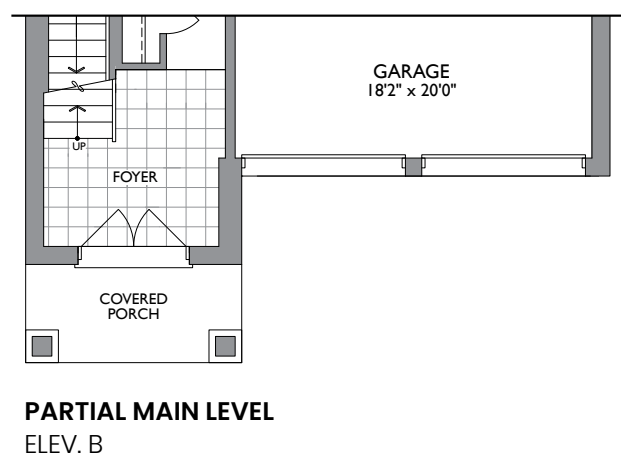
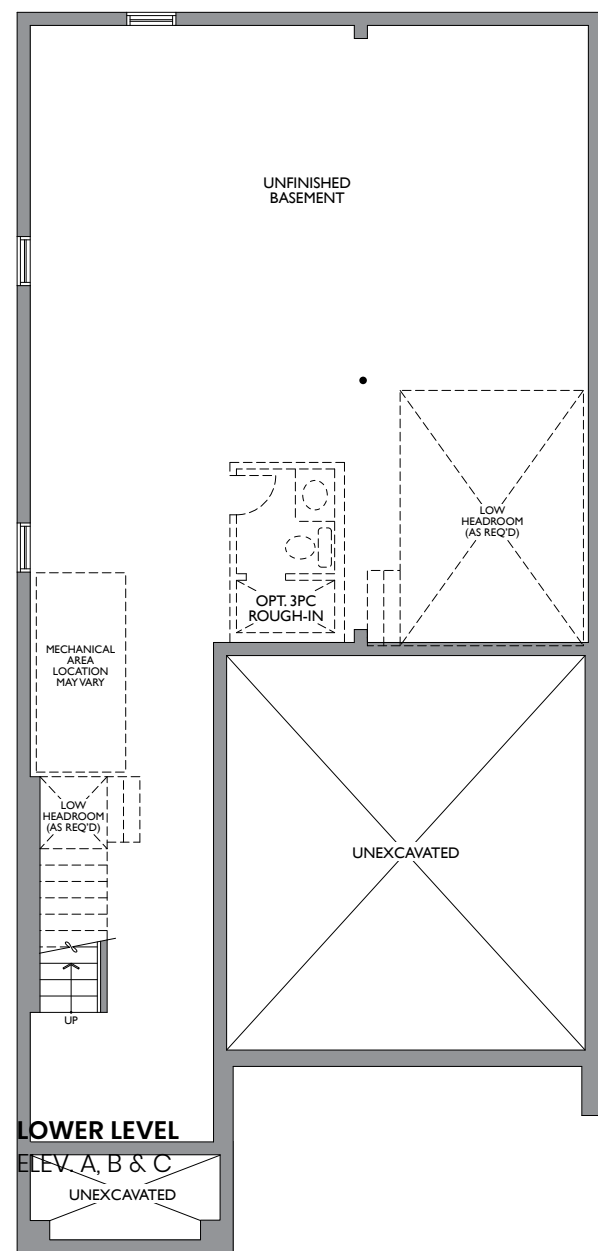



36'
COLLECTION

THE BRIAR

ELEV. A - 2,908 SQ. FT.
ELEV. B - 2,909 SQ. FT.
ELEV. C - 2,911 SQ. FT.



36' COLLECTION

	4
	3.5

THE BRIAR

ELEV. A - 2,908 SQ. FT. ELEV. B - 2,909 SQ. FT. ELEV. C - 2,911 SQ. FT.

Dimensions, specifications, layouts, window sizes, and materials are approximate only, may vary, and are subject to change as provided in the Agreement of Purchase & Sale. All representative square footages include applicable finished lower level and open to below and above areas. Square footage varies according to architectural style. Plans may be reversed. Illustrations are artist's concept. Elevation C partial floor plans apply to Elevation B full floor plan room dimensions. E.&O.E. June 2023. 3606.





ELEVATION B



ELEVATION C




36'
COLLECTION

THE MAPLE

ELEV. A - 2,587 SQ. FT.

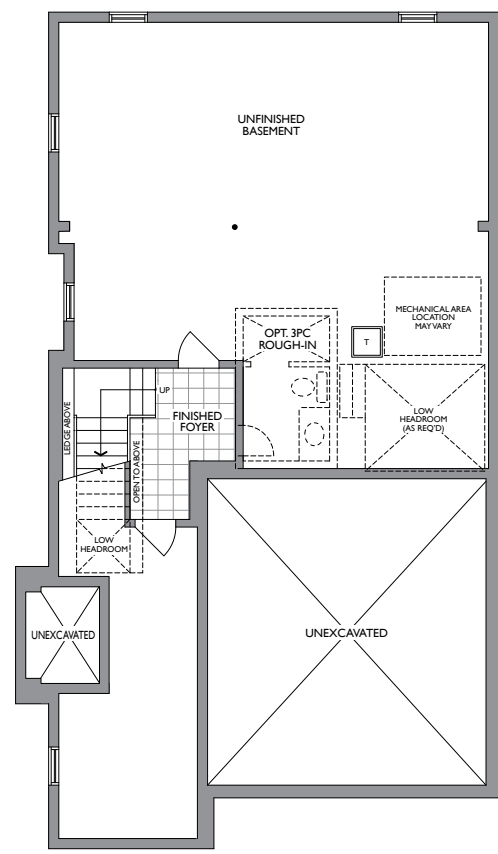
ELEV. B - 2,583 SQ. FT.

ELEV. C - 2,576 SQ. FT.

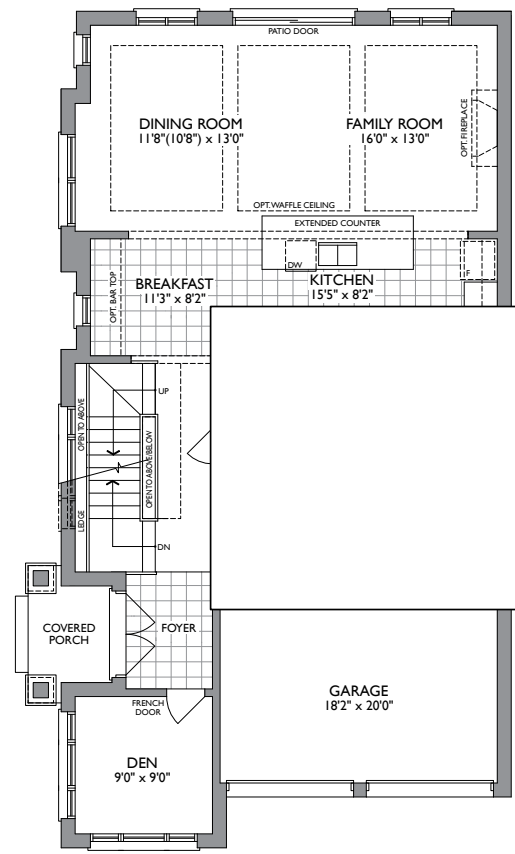



ELEVATION A

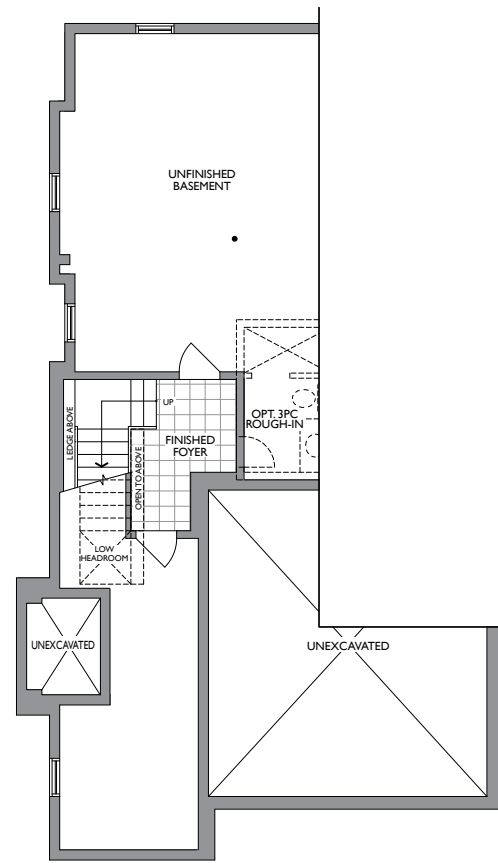




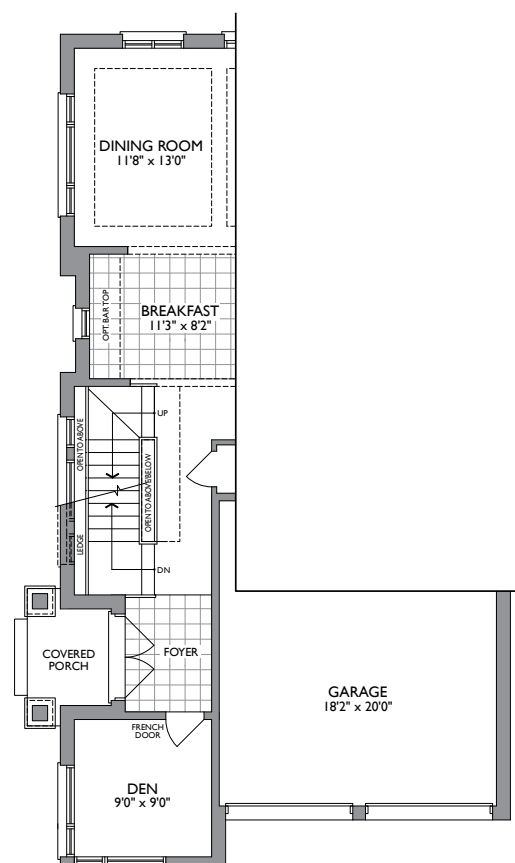
PARTIAL LOWER LEVEL
ELEV. A & B



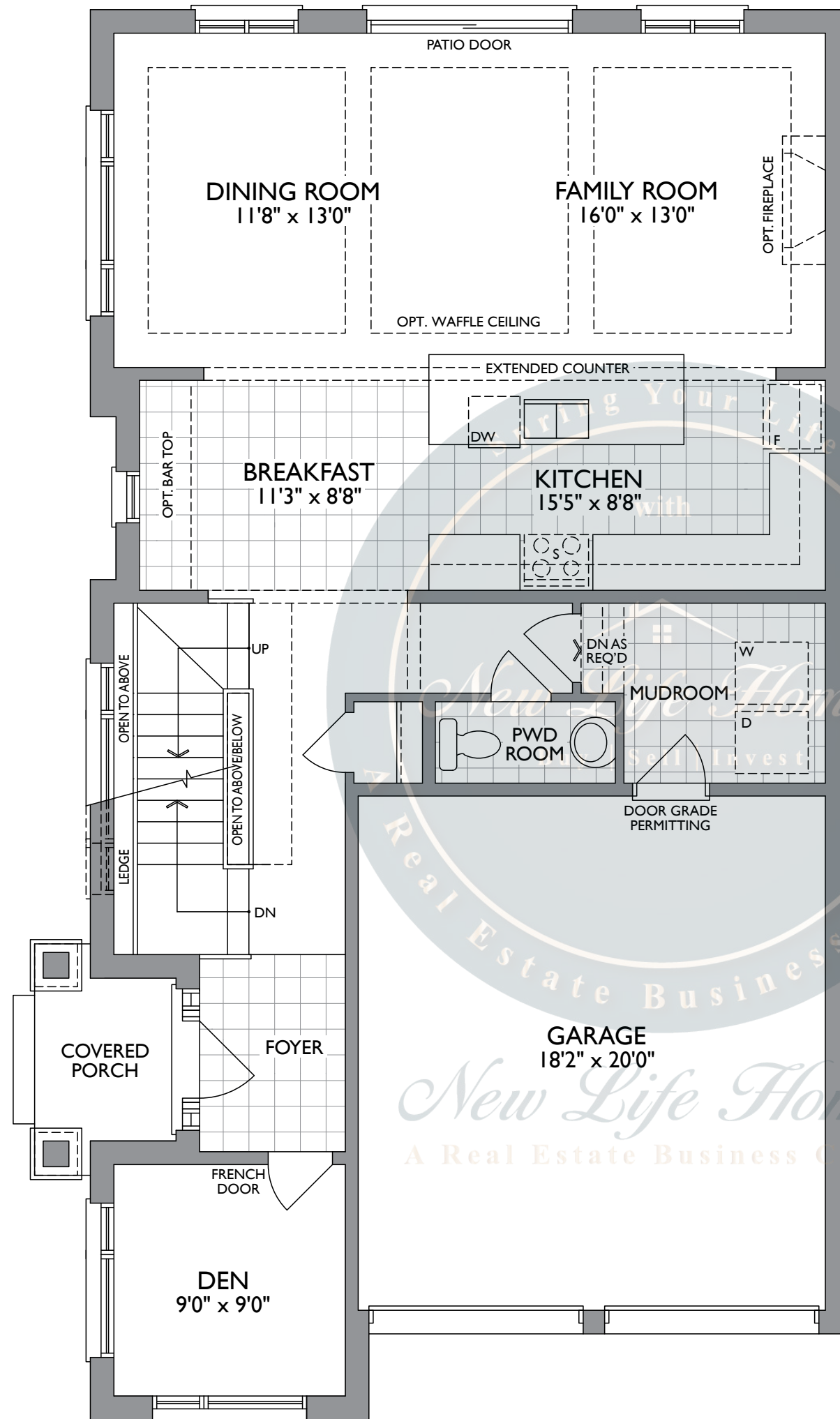
PARTIAL MAIN LEVEL
ELEV. C



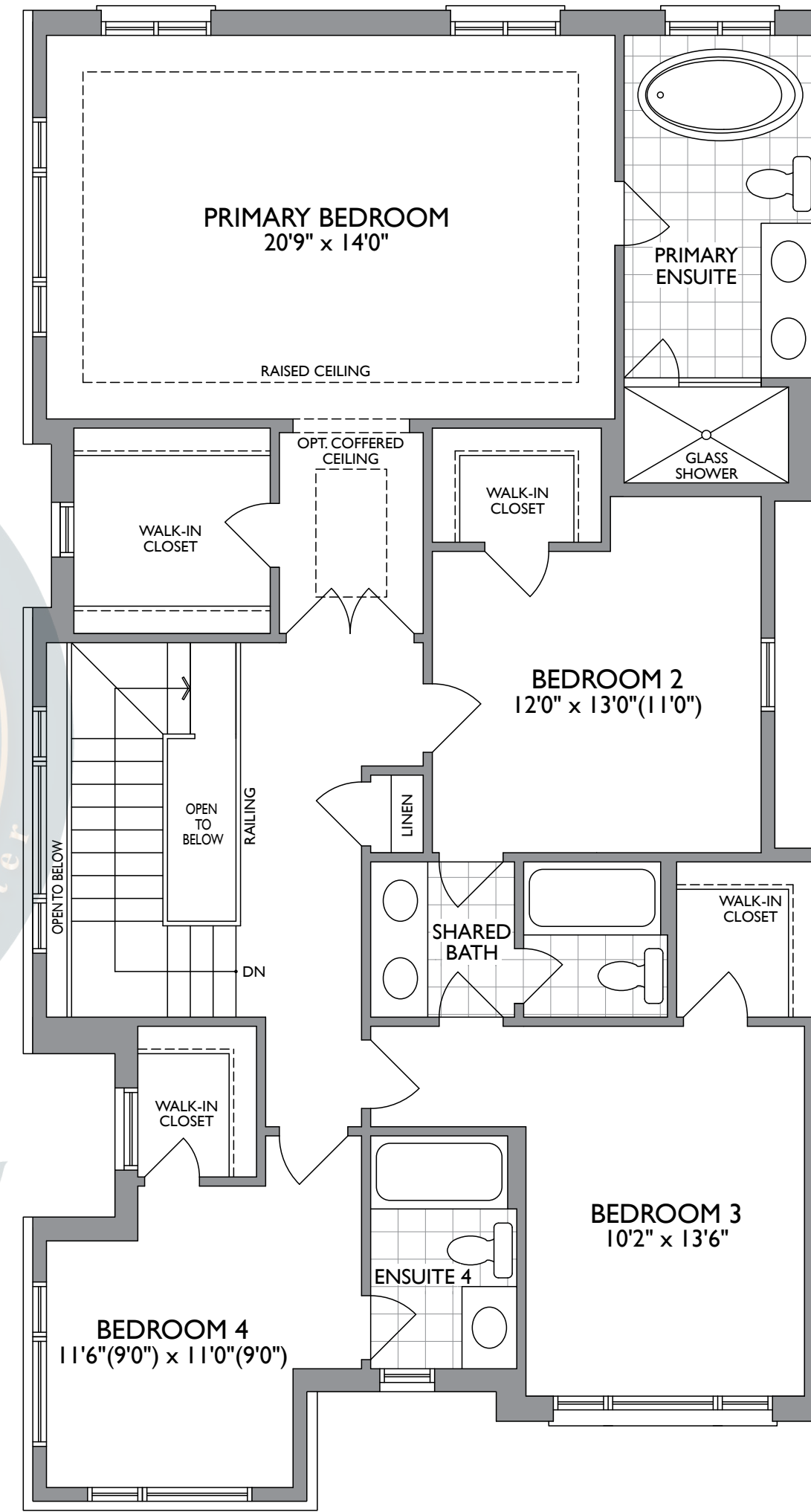
PARTIAL LOWER LEVEL
ELEV. C



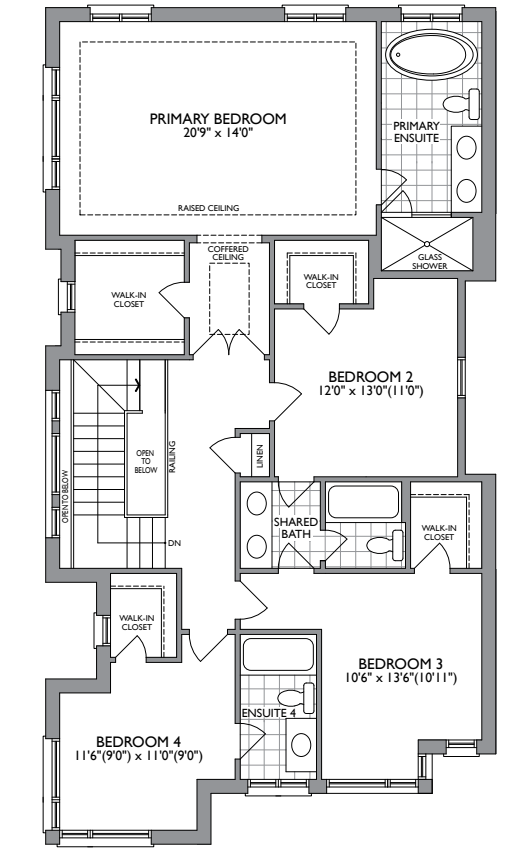
PARTIAL MAIN LEVEL
ELEV. B



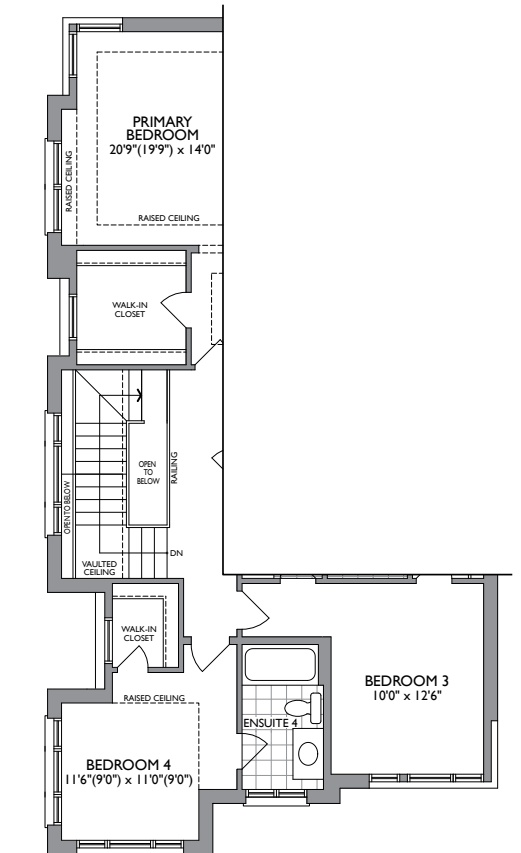
MAIN LEVEL
ELEV. A



UPPER LEVEL
ELEV. A



UPPER LEVEL
ELEV. B



PARTIAL UPPER LEVEL
ELEV. C

36'
COLLECTION

	4
	3.5

THE MAPLE

ELEV. A - 2,587 SQ. FT. ELEV. B - 2,583 SQ. FT. ELEV. C - 2,576 SQ. FT.

Dimensions, specifications, layouts, window sizes, and materials are approximate only, may vary, and are subject to change as provided in the Agreement of Purchase & Sale. All representative square footages include applicable finished lower level and open to below and above areas. Square footage varies according to architectural style. Plans may be reversed. Illustrations are artist's concept. Elevation C partial floor plans apply to Elevation B full floor plan room dimensions. E.&O.E. June 2023. 3607.



Call us: 647-215-2315 | Email: Business@newlifehomes.ca